

THE CAPTAIN'S LOG

THE OFFICIAL STUDENT NEWSPAPER OF CHRISTOPHER NEWPORT UNIVERSITY

CNU's 2001 - 2002 SGA Candidates



**Jonathan Janis
for President
Anna Williams
for Vice President of Student
Services**

We plan on building on the positive growth of our university with innovative ideas and spirited service. We want to involve more of the campus and give more attention to commuters and athletes.

We plan on effectively and accurately representing student concerns and issues to the administration as the voice of the student body. We will do this by empowering students to invest themselves, anticipating campus concerns and providing an open climate for communication.

Also, we will continue the momentum of increased student participation in campus activities, namely Family Weekend and Homecoming Week. Our goal is to ensure all clubs and organizations feel vital to the process.



**Thomas McDonald
for President
Rob Whitney
for Vice President of Student
Services**

Rob Whitney and I, Thomas McDonald, have come together to form what is no less than an idea machine.

To name just three of the many ideas that we have in no way does justice to the things we envision for our beloved campus.

We're going to revitalize our clubs, make dramatic strides to reach the silent majority and defeat apathy in the Senate and the student body with information.

In addition, whenever there is a legitimate student concern, Thomas McDonald and Rob Whitney will be there to take up the charge.

Our SGA will be in the informed and enabled sentiments of "Students First".



**Jenn Wenzel
for
Vice President
of University
Relations**

Over the past two years, I have had the pleasure of observing and participating in the growth of SGA. I have seen the SGA take on a much bigger role than it ever has before. As Vice President of University Relations (VPUR), I will show people what SGA does, but only students, but also involving faculty and the community in campus life.

Since the completion of the Freeman Center and other new facilities, school spirit has increased. I plan to raise it more with activities for all students: more concerts, spirit competitions and weekend planning to name a few.

As VPUR I would like to ensure that good records are kept so future officers can provide the same incredible events that former SGA officers provided.

Former Sen. Bob Dole to speak at spring commencement ceremony

Bob Dole, former Senate Majority Leader and Presidential candidate will be speaking at CNU's commencement exercises on CNU's Great Lawn on May 12.

In an announcement to the university President Tribble said that Dole's life "exemplifies the qualities of service, excellence and achievement that we hope all of our graduates will aspire to emulate."

President Ronald Reagan has said of Dole that "his title of Leader is not just a job title, it's a description of the man."

Dole has an long history of personal service. He served as platoon leader in the Tenth Mountain division in Italy during World War II where he was wounded and was awarded two Purple Hearts and a Bronze Star with Oak Leaf Cluster for his service.

President Bill Clinton awarded Dole the Presidential Medal of Freedom as a tribute to



Former Sen. Bob Dole
Photo by Getty.com

his character and contributions to the nation. Dole also was Chairman of the WWII Memorial Campaign.

Bob Dole was born and raised in western Kansas. He is married to Elizabeth Hanford Dole.

—Tosha Murph
Contributing Writer

Series: Changing faces of CNU



The new expansion project includes the purchase of about 16 acres of land on the east side of Warwick Boulevard. The recently acquired land includes the Lotz Realty building and its infamous "Jesus Is Coming" sign, as well as several other commercial and residential properties. See page 3 for the continuing series.

Photo by Michael Cooper/The Captain's Log

Binge drinking may be CNU safety issue

Revision may change face of student life

By Terri Fleetwood
Staff Writer

Melissa Marie Somers, 18. Matthew West, 18. Jonathan Levy, 20. Nicole Breckenridge, 21. Leslie Baltz, 21.

The names may be unfamiliar but the circumstances surrounding their deaths have influenced alcohol policy at schools across the state including CNU.

On Halloween night in 1997, Levy, of Radford University, and West, of Virginia Tech, were killed in a drunk driving accident that also claimed the life of Radford professor Margaret Anne Moore who was driving the oncoming car. Both West and Levy had been drinking and were headed to a party. That same night Somers went to bed and rolled out of a Virginia Tech dorm window, falling eight stories to her death. Her blood alcohol content was .21. A blood alcohol content of .08 is legally drunk in Virginia.

Less than a month later Breckenridge, of Virginia Commonwealth University, was killed after the car she was riding in crashed. The driver had been drinking. Baltz, a University of Virginia honors student, died after falling down a flight of stairs. Her blood alcohol content was .27.

The loss of these six lives represent the most tragic consequences of what can happen when alcohol use gets out of hand.

Binge Drinking. High Risk Drinking. Excessive Drinking. There are many names for it, but all have the same meaning — drinking to get drunk.

Each year there are reports of alcohol-related injuries and fatalities. Most of the deaths are accidents, falls, car crashes and drowning. Other deaths have resulted from choking on vomit or suicide. Alcohol also can contribute to a variety of problems ranging from missed class and work to domestic violence, sexual assault and rape.

A Harvard School of Public Health study on college drinking found that more students are abstaining from alcohol and those that do drink do so in moderation. But the 44 percent of students who binge drink keep the memory of that fatal Halloween

night present in the minds of those trying to curb binge drinking among college students.

Former Attorney General Richard Cullen formed the Task Force on Drinking by College Students in 1997 to study solutions and make recommendations to colleges on how to alleviate binge drinking. One solution is the enforcement of current liquor laws.

According to federal campus crime statistics from 1997-1999, CNU reported 212 liquor violations. During the same period, the College of William and Mary there were 325 liquor violations. At W&M, 189 violations resulted in arrests, while CNU made no arrests for their violations. All liquor violations were adjudicated through campus judicial proceedings.

Anyone under 21 caught driving under the influence of any amount of alcohol faces fines and a suspended license under Virginia's Zero Tolerance law. Public drunkenness, open container and possessing a fake ID can also lead to fines or jail time.

The Foundation Plan, CNU's response to the Task Force's recommendations, is unclear about which circumstances the college will make arrests for liquor violations.

CNU is reviewing its alcohol policy, including lifting the ban on campus alcohol sales and consumption. The only public reason given thus far is improving student life.

After Somers' death, Virginia Tech considered placing bars on windows of high-rise dormitories. Speculation that Baltz's death was related to the "4th-year fifth" (when seniors try to drink a fifth of alcohol before the final home football game) led UVA to publicly discourage the long-running tradition. At the beginning of the school year, state troopers and police in riot gear used tear gas to break up a James Madison University traditional block party near campus. Several alcohol-related arrests were made. Like CNU, JMU is currently reviewing its alcohol policy.

Schools like CNU often find themselves walking a tightrope between student life and liability. But when student life revolves around alcohol liability is a hot issue.

SGA Corner

McMurrin 102 was quiet as students voiced their questions and concerns they wanted the alcohol committee to look into during the March 28 SGA Senate meeting.

The majority of comments were in favor of bringing alcohol sales to dining areas, such as Discovery Café, as well as during sporting events. Many, however, were not in favor of allowing off-age students to have alcohol in their dorm rooms citing binge drinking as the cause of concerns.

"I find that people could see the reason to have drinking [on campus]," said senator Elizabeth Schilling. "But resident housing is a living community and abusing drinking leads to violent behavior, puking in community areas. It is not going to be where I live."

Many people disagreed and urged the committee to consider that if the university controls the amount a person can purchase then it should be allowed back on campus.

"It's not like the drinks will be sitting on the Great Lawn. It makes sense that we should be allowed to do things other college students can do," said Vice President of University Relations Jamilla Benthall.

Another topic during the discussion focused on serving of alcohol during alumni and other events that the university hosts but does not sponsor. Currently alcohol can be served at these events and many students feel that if the school decides to keep the campus dry that all functions on campus should be held to the same standard.

Other topics that were discussed including the upcoming Potato Drop which will be April 7 at 9 a.m. in the Student Center parking lot. Any student or organization wishing to participate can contact United Campus Ministries for more information.

The constitutional revision sessions were completed and the senate began voting on new sections during the latter part of the meeting.

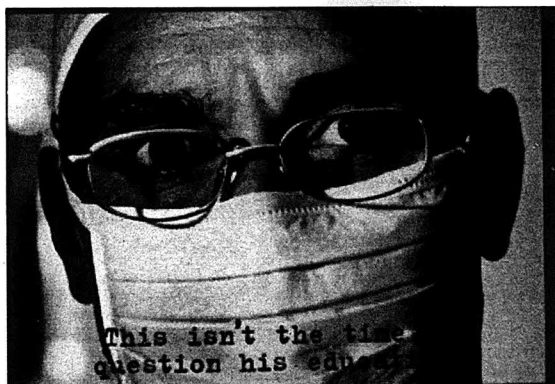
—Ramona Hernandez, Opinions Editor

Corrections:

— The story titled "Lady Captains drive in the runs" on page 11 was the wrong article. The correct article can be found on the on-line edition of The Captain's Log at <http://www.cnu.edu/clubs/clog/32/19/index.html>.

— The photograph on page 11 was not of Jenny Martin warming up in practice. The photo was of freshman Vanessa Gray pitching during a game against Randolph-Macon at Captain's Field.

— The photograph of Vanessa Gray was taken by Cami Wood.



This is.

$\frac{2}{2} = 1$

2

2

2

2

2

2

2

2

2

2

2

2

2

2

Domino's Pizza

Since we know you're working hard...
Let us provide a study break that
Takes care of your **HUNGER**
AND your **WALLET!**
We accept most major credit cards.

Proudly Serving:
Christopher Newport University
595-3030

<p>\$5.99</p> <p>Any Medium One Topping Pizza</p> <p><small>Offer Expires 12.31.00 Deep Dish Extra</small></p> <p><small>Offer valid with current Student ID C-nuts and valid with any other offer. Valid at participating stores only. Credit card price valid in some areas.</small></p>	<p>\$6.99</p> <p>Any Large One Topping Pizza</p> <p><small>Offer Expires 12.31.00 Deep Dish Extra</small></p> <p><small>Offer valid with current Student ID C-nuts and valid with any other offer. Valid at participating stores only. Credit card price valid in some areas.</small></p>	<p>\$9.99</p> <p>Any Two Medium One Topping Pizzas</p> <p><small>Offer Expires 12.31.00 Deep Dish Extra</small></p> <p><small>Offer valid with current Student ID C-nuts and valid with any other offer. Valid at participating stores only. Credit card price valid in some areas.</small></p>
---	--	--



CAMPUS LIFE

Tuition hike won't be part of CNU growing pains, Tribble says

By Terri Fleetwood
Staff Writer

Now that CNU has made public plans to expand on the east side of Warwick Boulevard, the two main questions are why and who pays for it. President Tribble says the reason the changes are occurring so fast is to accommodate an influx of a more traditional student body.

In the '80s and '90s, colleges nationwide began reaching out to nontraditional college students to boost declining enrollments. Many, including CNU, developed external degree programs to attract working adults. However, with the economy slowing down, many nontraditional students are opting to attend community colleges.

Also, according to the U.S. Census Bureau, the teen population has risen steadily since 1995 and is expected to increase by 16 percent by 2010. As a result, the focus has shifted back to recruiting 18-24-year-olds to fill up classrooms.

CNU changed its mission from an open-admissions college to a more selective institution in response to the change in demographics and more students choosing to stay in state.

"Either CNU reached out to traditional students or CNU was going to go out of business," said Tribble.

Which brings up the issue of money. CNU is a state supported school though not all of its funding comes from the public funds.

Outside of private donations, there are three main ways schools raise money. The most common is to raise tuition, which President Tribble has said would not happen.



Ratcliffe gymnasium is under massive reconstruction, and will house several departments currently located in Ferguson as well as numerous classrooms. With the recent rains the area just outside of Ratcliffe has become a pool of mud.

Photo by Hugh Spain/The Captain's Log

The Va. General Assembly's tuition freezes remain in effect until 2002. CNU still can raise out-of-state tuition, but nonresidents make up only 3 percent of the student population.

Secondly, CNU can accept more freshmen because they are more likely to live and spend more money on campus. CNU had initially planned to increase the next year's freshman class by 100, but recently decided not to because of state budget cuts.

Finally, the university can increase student fees. Student fees pay for everything from computers to athletic programs to light posts. CNU has lower tuition rates than most state colleges, but that is offset by higher student fees. This is especially true for resident students. Room and board, which in many instances is more expensive than elite schools such as University of Virginia and the College of William and Mary.

The third residential complex sched-

uled to open in fall 2002 is being financed through student fees. "New dorms are expensive and have to be paid for through student fees," said Tribble. "We'll do our best to keep student fees as low as possible."

This is the last of a three-part series on the transformation of CNU from its inception (part 1, issue 16) to the controversy rapid change has brought.



The 2001-2002 candidates from left to right are: Rob Whitney, Thomas McDonald, Jonathan Janis and Anna Williams.

Photo by Tom Stormer/The Captain's Log

SGA party debates open campaign season

The candidates for the SGA President and Vice President of Student Services debated Wednesday about issues relating to student involvement in clubs, commuter and residential life, and past leadership roles.

Current SGA president Jonathan Janis and his running mate for VPSS, Anna Williams, squared off against Presidential nominee Thomas McDonald and his VPSS candidate Rob Whitney.

Platform discussions were polite as the candidates spoke in front of a small gathering of 30 in Anderson Auditorium.

Janis talked about his past year as president and ability to reach out to all students. When asked about a weakness, he

referenced his Residential Assistant duties in Santoro Hall by saying, "I sometimes need to relax a little bit, but I put a lot into the job."

McDonald mentioned his past experiences and how they have prepared him for the position. He said he has learned about "enabling and not just pushing." McDonald is a former SGA parliamentarian (1999-2000) and currently an at-large senator. This is his first SGA presidential campaign at CNU.

All candidates recognized and agreed on the need for SGA to promote higher involvement of residential students in clubs and organizations.

As President of the Panhellenic Orga-

nization, Phi Mu member and SGA senator, Williams expressed her concern over the lack of athletes in the student senate and proposed more open forums during the day instead of relying on the SGA meeting once every week.

Whitney proposed tightening the Senate procedure by implementing Robert's Rules or an abridged version of the Strict Conduct Code.

Although enthusiastic at times throughout the debate, the current president of the Model United Nations and ROTC member, couldn't help but yawn in the midst of answering a question saying, "It's been a long week."

—Staff Report



Incumbent SGA President Jonathan Janis campaigns for re-election.

Photo by Tom Stormer/
The Captain's Log

OPINIONS

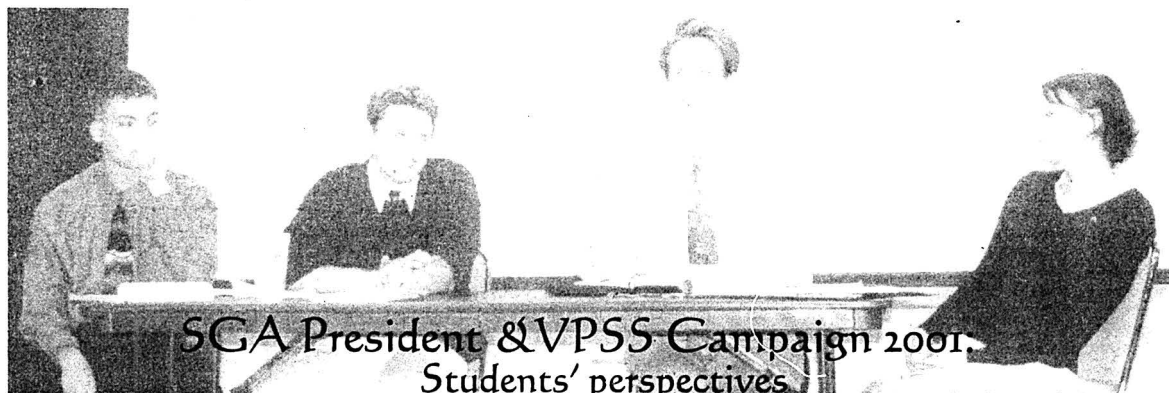


Photo by Tom Stormer/The Captain's Log

For Jonathan Janis and Anna Williams

Student's voices heard with current leaders

While I was walking through campus I saw a poster that advertised candidates for SGA president and VPSS. At the bottom of the poster there was one of several "campaign promises" that stood out to me; it said, "Get your voice back!"

Where did the students' voice go? I certainly have never noticed any deaf ears turned to the senate. If by getting your voice back these two candidates mean adopting Robert's Rules of Order—which most of the student body is not completely familiar with—how are you going to be heard?

What the SGA needs is what it already has—Jonathan Janis, with the addition of Anna Williams. Jonathan and Anna bring

Impressed with dedication and time

As a freshman resident I've become thoroughly active on campus, involving myself in clubs and organizations.

I truly have become impressed with the dedication, time and service of SGA and its President Jonathan Janis along with the Panhellenic president and Phi Mu sister Anna Williams.

Whether it is fighting for better student involvement, raising money for charity or even stopping to say hello to engage in a conversation about the growth of CNU,

Known to the entire student body

SGA elections are rapidly approaching and I place my personal ballot for Jonathan Janis.

As a full-time student who has never been able to live on campus, I have had some feelings of isolation in regards to student life. However, when I arrived at CNU in 1999 as an out-of-state freshman, I was warmly welcomed by Janis and Jamilia Benhal.

Janis is an individual who embodies

Characteristics of an outstanding leader

People often look for someone to follow, but it is rare that they find a good leader. Jonathan Janis exhibits the characteristics of an outstanding leader and an exemplary person. Jonathan goes out of his way to interact with individuals. He also makes an effort to know them on a personal level. These are truly the characteristics of an effective leader.

Over the past year I have watched the

their heartfelt dedication to the university. Their time management skills are second to none. Both have stuck beside the school and have never turned their backs to it. They have "staying power." With their dedication, strong sense of urgency, and initiative they can achieve a common vision, which will benefit the entire student population.

Together, Jonathan and Anna have the ability to foresee problems that may arise, and are able to adjust their plan of action accordingly. Why fix what isn't broken? Vote for the two candidates with backbone and bite. Vote Jonathan Janis for president and Anna Williams for VPSS.

Dave Johnson

these two have shown responsibility not only to their specific clubs but to the school as a whole.

I feel it is important that, for leaders, qualities such as awareness, perseverance, organization, new ideas and friendliness are vital to being well received by peers and constituents. Through my time spent with Janis and Williams, it is apparent that they possess such qualities.

Jeremiah Davis

the positive energy that CNU has progressively developed - both academically and socially. He lives everyday outside of "the box" that many are still imprisoned in. Jon has made himself known to the entire student body, regardless of our personal or individual differences.

When voting for your SGA president this Spring please ask yourself, "Do I know my candidate?"

Khalila Tayi Deen

Student Government Association flourish and become an organization that people want to be involved in. I believe that Jonathan, as well as the rest of the executive board, played an instrumental part in reclaiming the excitement of the student body. We as students not only feel that we have the right to voice our opinions, but that our opinions do make a difference.

Pam Todd

For Tom McDonald and Rob Whitney

Best vision for SGA is found in McDonald/Whitney plan

If one word could describe CNU in the nearly four years I've been here, it would be "change." President Tribble has a firm vision of what CNU will become. I understand and agree with his vision.

In order to reach the goals set out for the university, the students need to establish a strong and effective student government, where the government will play a major role in the lives of the students of CNU. Right now, the SGA does not fill that role. It's time for a fundamental change in the SGA, and Thomas McDonald is the candidate who has the best vision and experience to lead that change.

McDonald also possesses a fundamen-

Spirit and commitment needed for the job

I would like to give my support and endorsement for Tom McDonald and Rob Whitney for SGA President and Vice President of Student Services, respectively. As a rising senior here at CNU, I have been involved in the SGA since my first semester. I have seen the ups and downs of the SGA, and I have also seen both Tom and Rob's involvement in the SGA.

Tom is a former member of the executive board, and I recall many times during his tenure that I agreed with what he had to say, even when others disagreed. He still stood up and voiced his opinion, which is the most impressive part of how Tom carried himself during his tenure.

Tom and Rob will bring order into the SGA once they are elected. The SGA would no longer be a meeting where interruptions reign and where you can never know which direction the meeting is going in.

Above all, we are all at CNU for a rela-

tal faith in the students to govern themselves, a faith that I am not convinced his competition shares. Mr. Janis has done a lot to increase participation, but hasn't spelled out what to do now that people are participating.

Thomas McDonald knows what to do; he knows how to harness the newfound spirit that is pervasive on campus now, and use that spirit to accomplish true self-government. Thomas McDonald truly believes in "Students First." He has the faith in the student body here to let students truly be first.

Sean Bergeron

tively short time and during that time, it is always nice to see different people step forward and show their leadership. Tom and Rob are a combination of old and new, while maintaining an altogether fresh, new look. With their election, they will bring new faces with new ideas. We will have different viewpoints to challenge our minds. We will have the type of meetings where we get done the things that we need to be done. The SGA will become a place where you can go and have your viewpoints heard—and also be respected.

Tom and Rob bring to CNU their spirit and commitment to being campus leaders, just like many other students. They show willingness and desire to make CNU shine. We should let this happen, and with Tom and Rob, we can.

Russ Crandall

Combination will service entire student body

I am writing this letter to show support for Thomas McDonald and Robert Whitney for President and Vice President of the SGA.

It is my belief that this combination will service the entire student body, commuters and residents alike, more efficiently than their opponents' would. It has been my experience that only the residents have a voice about what goes on with this campus, which leaves other students attending CNU unheard.

Mr. McDonald and Mr. Whitney will make a commitment to the student body as

a whole. They will move for a more involved Senate; they will try to make the clubs, including the Greek community, more involved on campus; and they will have the students help with the vision of Christopher Newport University.

This week while you are walking the halls, stop by the election table, and vote for McDonald and Whitney. Help them take "students first off of paper and into action."

Travis M. Binns

Opinions continued

The great people famine of 2001

Have you ever been hungry? I am not talking about the hunger you might feel after classes, or because you skipped breakfast. I am speaking of the hunger that stems from not having eaten in days. Or if you have eaten, it's because you happen to find some remaining scrap of someone else's meal that they didn't finish. If you've ever been this hungry then you know how a whole bag of sweet potatoes would sound: like a feast.

April 7 at 9 a.m., 45,000 pounds of sweet potatoes are going to be dumped on the Student Center parking lot, bagged and given to the Food Bank.

So why is it that when the United Campus Ministries and the Student Government asked for volunteers only 50 people stepped up? The goal is 300, and the bagging of the potatoes should only take two hours. But if only 50 people show up, we'll have yams on campus for the next decade.

According to America's Second Harvest, nearly 90 percent of all poor Americans live outside of urban ghettos. They live near us and the neighborhoods we grew up in - the suburbs. They could be people you grew up with.

I've seen people do amazing things on this campus. They've have saved academic programs, created 23 new student organizations last semester and older clubs have record breaking membership. Mobs of people show up at sporting events, home-

And Ramona says

Ramona Hernandez



coming activities and SGA meetings. They've made this campus better every day.

So why are they missing a golden opportunity to do something really phenomenal and something really good?

Saturday mornings are precious. I understand that. But two hours is nothing in comparison to the huge difference these 45,000 pounds of sweet potatoes are going to make.

On April 7, I'll be bagging potatoes, rain or shine because I understand that there are people in my neighborhood that need my help. I hope that other students, faculty, staff and anyone who can be there will be.

Reach past your own desires and embrace your community because they need your help.

—Ramona Hernandez is The Opinions Editor for the Captain's Log

The Captain's Log

2000 - 2001 Staff:

Editor in Chief/Hugh Spain

Layout/Design Editor/Patricia Mooza

Managing Editor/Nicholas A. Thomas

A and E Editor/David "Cash" Arehart

Sports Editor/Michael Mullin

Opinions Editor/Ramona Hernandez

Online Editor/Jessica Ledbetter

Computer Systems Analyst/Tim Cline

Advertising Director/Regina Addy

Copy Editor/Cami Wood

Photography Editor/Tom Stormer

Staff Writers:

Allen Brooks, Tami Conner, Terri Fleetwood,

Tom Geary, Carrie Hagood, Jeromie Heath,

Seth Klein, Virginia Miller, Liz Munson, Tosha

Murphy, Jesi Owens, Jeremy Sanchez, Bryan

Wakefield, Clyde Whiteman, Kimberly Wright

Staff Photographers:

Mike Cooper, Taryn Cornelius

Faculty Advisor/Dr. Terry Lee

The Captain's Log is the Official Student Newspaper of Christopher Newport University.

The Captain's Log is published on 24 Mondays throughout the academic year.

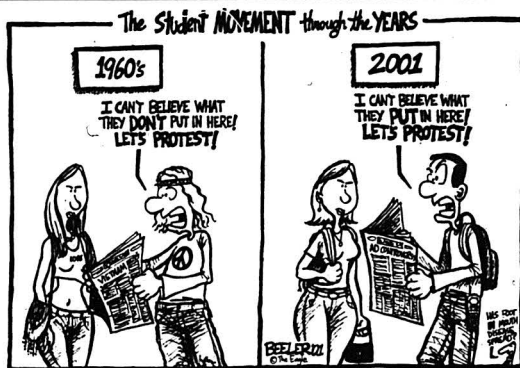
New contributions are accepted by fax (594-8759), by e-mail (clog@cnu.edu) or in The Captain's Log office (SC 223).

Circulation inquiries, advertising rates, and policies are available upon request by telephone, (757) 594-7196, e-mail or on our Web site. The Captain's Log is created with Apple Macintosh computers, using Adobe PageMaker.

The Captain's Log reserves the right to edit letters according to style and length, as well as to refuse publication. The Captain's Log welcomes letters from its readers. Send letters to: The Captain's Log, 1 University Place, Newport News, VA 23606. Letters may also be brought to our office or sent to us by e-mail at clog@cnu.edu. Anonymous letters may be printed, but writers must sign the original, providing a full address and telephone number for verification purposes.

Students: please indicate your class status. If the writer is affiliated with an organization, that may be noted.

For a letter to be considered for publication in the next issue, we must receive it by noon of the Wednesday prior to publication. Corrections/Clarifications to The Captain's Log will be published in the issue following the error.



FROM
HERE



TO
ETERNITY

Whenever you're going, don't forget to stop in for supplies

It's all at your college store.

CHRISTOPHER NEWPORT
UNIVERSITY BOOKSTORE

A Member of the National Association of College Stores

TOYOTA

CALL IT START UP MONEY.

Now
TOYOTA'S COLLEGE GRADUATE
FINANCE PLAN INCLUDES \$500
TO GET YOU GOING!

There's sure to be a Toyota that's just right for you.

And now there's a Toyota College Graduate Finance Program that's just right, too. Here are some of the advantages:

- No Down Payment
- No Payment for 90 days
- Finance up to 72 months
- Get \$500 Cash Back From Toyota...
in addition to any other current Toyota customer incentives!

So if you're within 4 months of graduation — or if you graduated within the past 2 years — Ask your Toyota dealer for all the details.

www.gettoyota.com

Toyota College Graduate Finance Program available to qualified applicants from Toyota Financial Services. Not all applicants will qualify. Some restrictions and limitations apply. Cash back offer subject to program. Excludes and other options \$500. See dealer for details.



SPORTS



CNU sports ride wave of wins and losses

By Tom Geary
Staff Writer

Two words can best describe CNU's athletics in the past week: rollercoaster ride.

With spring sports in full swing, the Captains and Lady Captains are chalking up enormous victories and disheartening losses.

One team that has fared well has been the golf team. Golf went to Ferrum College in Smith Mountain Lake, Va and took second place. CNU shot 320 on the second day for a total of 629, with Averett eking out the win shooting 619. Chris Kline led CNU shooting 72 the first day and 80 on the second.

CNU travels to the Camp Lejeune Tournament on the last weekend in March.

Other teams have not fared as well in the Dixie Conference lately. The baseball team dropped three of its last four games to conference opponents by minimal margins.

After beginning the season with an impressive 10-2 record (4-0 Dixie), the Captains lost 2-3 and 4-5 at Methodist College. CNU followed the losses by splitting a doubleheader with N.C. Wesleyan. Cliff Wester picked up his third victory of the year when the Captains beat the Bishops 3-2 in the first game.

A 2-0 lead in the first inning of the second game was not enough to put away N.C. Wesleyan, who added one in the third and the two winning runs in the fifth inning to drop the Captains to an 11-5 record (5-3 Dixie).

Coach John Harvell has remained optimistic about the team despite the series of losses to conference opponents.

"All three losses, in the conference, have been by one run," said Harvell. "We have been in position to win all of them, we just haven't got that big hit. Our pitching has been doing a great job. If we start hitting the ball we will be just fine."

Although the Captains struggled against Methodist and N.C. Wesleyan, their record was still good enough to earn them a 4th place ranking in the region, as well as votes in the national poll, for the first time in school history.

"Hopefully we can build on that," Harvell said.

The men's and women's tennis teams have been all over the courts.

The men's squad has won three of its last four games to improve their record to 6-4 overall (3-2 Dixie). Jason Martin, who holds the #1 position on the team, has had a 6-1 record in singles and a 5-2 record in doubles with his partner Tommy Miller this year. James Hull and James Lowes have also been picking up singles victories, with 6-2 and 5-3 records, respectively.

Victories over Va. Wesleyan 4-3, N.C. Wesleyan 7-0, and Greensboro 6-1 have given the team a winning record for the second time this season. Only a 1-6 loss to Methodist has set back the Captains recently.

Meanwhile, the Lady Captains have lost four of their past five matches, including all three home matches. Losses to Methodist and Meredith both 0-9 have given the Lady Captains an overall record of 4-7 on the season, 1-2 in the Dixie.

Coach Pat Accetola believes that the strong competition from teams like Methodist, who is ranked in the top 15 in the nation, and Meredith has helped shape the team into a group willing to learn from their mistakes.

"We have faced some strong competition so far especially the last two matches," said Accetola. "As a coach, I feel it is important to play strong competition so that your own level of play increases. It forces the athletes to play at a higher level. This is good as long as the players keep their spirits up. So far they have and I'm proud of them for that."

Inexperience has plagued the Lady Captains this season. Only three players have previous experience at CNU. However, Coach Accetola is sure that the team can bounce back from their losses by following a few basic steps.

"They need to keep working in practice and in matches on the following areas: footwork, consistency, more depth on volleys, and more slice and spin on their shots," she said. "Since their attitudes are excellent, I think we should have more victories down the road."



In this 1998 *The Captain's Log* File photo, assorted members of the Golf team demonstrate the proper swing and follow through (top). Sophomore Michael Hobson practices the 400 on the track behind James River Hall (above). Freshman Mary Cortina makes a run for the goal during Lacrosse practice (right). Cortina scored the first goal in CNU Lacrosse history during the lady Captain's 27-1 loss to St. Mary's.

Photos above and right by Mike Cooper/
The Captain's Log

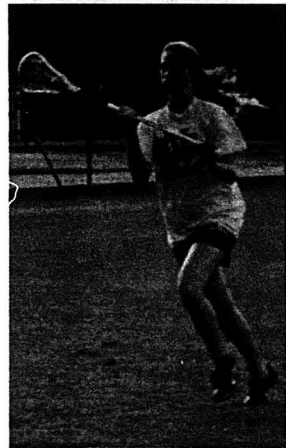
Victories have also been a problem for CNU's lacrosse team in its initial season of play. So far, the team is 0-5 and has been outscored 85-9 by opponents.

Mary Cortina gave CNU their first goal in the opening game, a 27-1 loss to nationally ranked St. Mary's (Md.). She also put up two goals to help the Lady Captains rack up a total of four, their season high, in a 13-4 loss to Sweet Briar.

Now at the halfway point of the season, the lacrosse team continues seeking its first win against Hollins as well as Dixie Conference foes Ferrum, Shenandoah and Greensboro before the Dixie Conference Tournament in late April.

The baseball, softball, tennis and lacrosse teams are not the only CNU teams in the news.

Last week, the athletics department learned that senior Antoine Sinclair was named first-team All-American by the Na-



tional Association of Basketball Coaches. Sinclair led the Captains to the Elite 8 round of the NCAA Tournament for the first time with his team-leading 17.9 points per game.

Three other basketball players, as well as Coach C.J. Woollum, were also honored. The Virginia Sports Information Directors' (VaSID) College Division All-State teams included not only Sinclair on the Division II-III All-State team, but also honored Carlos Heard as a second team player. Tia Moore and Serita Jackson received second team and honorable mention honors, respectively, for the Lady Captains.

Woollum named South Region's Coach of the Year

By Clyde Whiteman
Staff Writer

For CNU's men's basketball team, the awards keep coming. Last week, head coach C.J. Woollum was named the South Region coach of the year for the second time. Woollum won his first award in 1998, with a 22-5 record.

He coached the Captains to a 25-4 record this year and an appearance in the Elite 8 of the NCAA tournament, the first time CNU advanced past the Sweet 16.

In his 17 years as head coach, Woollum has established a winning tradition for the Captains. His 344-135 record and .718 winning percentage is impressive, but that does not fully explain the profound impact he has made on the basketball team since arriving in 1984.

One word that describes how the Captains have played under the guidance of coach Woollum is "consistent." Over the last 13 years, the Captains have repeatedly finished either first or second in the Dixie Conference. Also, CNU has won four consecutive conference tournaments and five of the last six overall.

Over the last four years, Woollum has established a 98-14 record, an astounding .875 win percentage.

"We have had a lot of talented players not only over the last four years, but before then as well," said Woollum. "I don't think of every year as a rebuilding process, I think of it as reloading. You've got to have talent to win, and I've been fortunate to coach many talented players."

After losing five seniors and two other players from the previous year, the Captains consisted mostly of transfers and young, inexperienced players. Led by All-American senior Antoine Sinclair, the team looked to him for guidance.

"I had to be a leader and show them the ropes," Sinclair said. "They didn't know how to adjust to coach Woollum at first, but it became easier as the season progressed."

When asked about how he was able to



CJ Woollum rejoices during the retiring of Antoine Sinclair's jersey (above) and watches from the sidelines in the late 1980's (right).

Photo by Mike Cooper/
The Captain's Log

be successful with such a young, inexperienced team, Woollum stated, "We did have some question marks going into this season, but our nucleus was coming back. Both of our point guards came back, and Terry Gray performed well for us this year. Also, we landed two talented recruits in Carlos Heard and Jermaine Woods and they played remarkable for us."

Even though the Captains lost in the Elite 8 round of the NCAA tournament, Woollum is positive of the team's chances of making another run next year.

"The loss to William Paterson will motivate the team next year and make them work harder," he said. "It was difficult because we had the game won, but lost it. Our goal is to make another run next year and this season will serve as a motivator for next year."



Softball dominates opponents by winning 11 in a row

Takes double-header against Chowan

By John Bailey
Staff Writer

Chowan senior Amanda Boston stepped up to the plate, adjusted her hat and dug her feet into the red clay. Waiting for her on the pitcher's mound, CNU's junior Donna Cerami watched her opponent take several warm-up swings. The previous Braves' batter had broken Cerami's run at a perfect game by hitting a single.

Now, as batter and pitcher eyed each other, Boston looked ready to spark a serious Chowan run during CNU's home softball game on March 28. Cerami launched the ball. Boston braced herself and swung, hitting a double and bringing the Chowan bench to its feet.

Cerami shook her head. "Forget it," she thought to herself. "I'm not fooling around any more."

Cerami's face melted from frustration into absolute determination. She focused herself on the next batter, wound up and pitched a strike.

Looking more confident, Cerami went on to strike out the third Chowan batter and then the fourth and the then the fifth.

The series established the Lady Cap-

tains dominance through the rest of the game and CNU went on to defeat Chowan 6-0 in the first game and then shutout the Braves in the second game, 8-0.

The Captains have now won 11 consecutive games. Over the course of the streak the Lady Captains have outscored their opponents, 104-1.

"Things are really coming together now," coach Paul Weiss said. "The errors are coming down drastically, and we are hitting the ball harder than most of our opponents. I knew this was going to be a power hitting team."

Junior Jennifer Nowacki led the Captains hitting 5-for-5 in the series including a solo homer in the second game. Nowacki also caught three centerfield blasts in a row to put out Chowan in the sixth inning of the first game.

"I was in a little bit of a slump the past few games," Nowacki said. "So, it felt good hitting that homer. Of course, it's hard following Renee since she's been hitting so well."

Freshman Renee Sigafos hit a two-run homer in the second.

In the first game, Cerami improved her record 12-2 with a four-hitter. She struck

out nine. Sophomore Tammi Perok was 2-for-4.

In the second game, the Lady Captains won behind the one-hit pitching of freshman Vanessa Gray who is now 10-2. Senior Stacey Hundly was 2-for-2 with a double, sophomore and Jen Harrell was 2-for-3.

CNU is now 22-5 overall and 5-1 in Dixie conference play.

"The rest of the way is going to be tough, with five real good teams to face in a row," Weiss said. "But if we can win four of our last seven, I'll be thrilled."



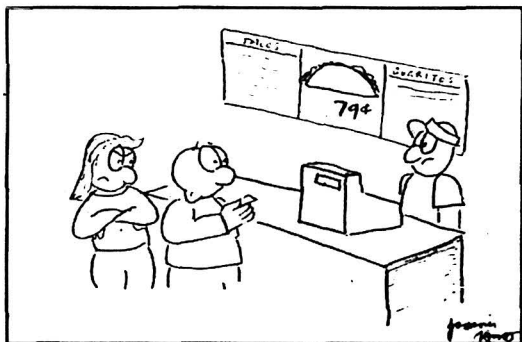
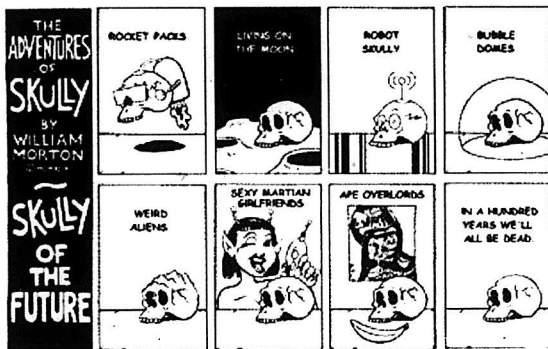
CNU TONIGHT
Wednesday-April 4th
9:00pm

Gaines Theatre

Sketch Comedy for the Students.

By the Students

COMICS



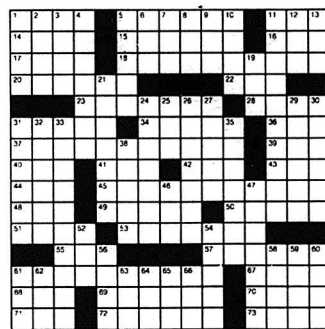
AFTER SPENDING \$2 FOR THE BUS
"Do you accept dining points?"

By Jeromie Heath

Crossword

ACROSS
1 On Golden ...
5 Carve
11 Indy stop
14 Fencer's foil
15 Share top billing
16 Actress Gabor
17 Neeson of
"Schindler's List"
18 Cha: aral bird
20 Actress Wright
22 & so forth
23 Poster paint
28 Sibilant sound
31 Temperate
34 Fight venue
35 Illuminated
37 Tiny, yellowish-red ubiquitous bug
39 Lily or Wallach
40 Ventilate
41 Pardner
42 Roller-coaster thrill
43 Lair
44 Fish eggs
45 Using emphatic type
48 Sunbather's aim
49 Number of Roman hills
50 Tears
51 Against: pref
53 Unmarried folk
55 Air France flier's letters
57 Painter
61 Kin of hypnotists
67 Impartial
68 Grow older
69 Perfumed packet
70 Jamaican fruit
71 Woods' org
72 Bird calls
73 Weaver's frame

DOWN
1 Bombard
2 Mayberry boy
3 At hand
4 Mother of Persaphona
5 Go away!
6 Pigeon call
7 Born in the ...
8 Inc. in England
9 Golf norm
10 Faithful
11 Tentatively scheduled
12 ... been had!
13 Old sailor
19 Ultimate degree
21 Egyptian god of the lower world
24 Shah's family name
25 Period
26 Tearing violently
27 Playful prank
29 Unvoiced
30 Wasp wounds
31 Athens rival
32 Buckeye
33 Part of the Arctic Ocean
35 Hopeful one
38 Author of "Them"
48 Ballplayer Dykstra
49 Piquant
52 Doctrine: suff.
54 Survives
56 Tryout
58 "Othello" villain
59 Grain depository
60 Neat and tidy
61 Chart
62 Easter item
63 Uncooked
64 Treatment for swelling
65 That ship
66 Vietnamese New Year



© 2001 Tribune Media Services, Inc.
All rights reserved.

4/7/01

Solutions

ACROSS
1 On Golden ...
5 Carve
11 Indy stop
14 Fencer's foil
15 Share top billing
16 Actress Gabor
17 Neeson of
"Schindler's List"
18 Cha: aral bird
20 Actress Wright
22 & so forth
23 Poster paint
28 Sibilant sound
31 Temperate
34 Fight venue
35 Illuminated
37 Tiny, yellowish-red ubiquitous bug
39 Lily or Wallach
40 Ventilate
41 Pardner
42 Roller-coaster thrill
43 Lair
44 Fish eggs
45 Using emphatic type
48 Sunbather's aim
49 Number of Roman hills
50 Tears
51 Against: pref
53 Unmarried folk
55 Air France flier's letters
57 Painter
61 Kin of hypnotists
67 Impartial
68 Grow older
69 Perfumed packet
70 Jamaican fruit
71 Woods' org
72 Bird calls
73 Weaver's frame

CLASSIFIEDS

Tape - A - Quarters

Congratulations to my new brothers of the Alpha pledge class of Alpha Psi Omega. We'll leave the ghost light on for you.

R O C K

GOT BACON?

-Anonymous

Mack Mommie: Thank you for a wonderful time. Koontz: Doing great job. Walters: On a roll. Big Erica: Home cooking! Nicole: Row your boat. Diane: Red fireball. Kristi: Never forget ya! Angie: Catcher intensity. Kelly: Permission 2 have fun. Nikki & Becca: Thanks 4 always helping. Softball, tennis, baseball, lacrosse: You can do it!

-Paj B (Take it 2 da house)

TSB- I miss the sound of your voice on the other end of the phone, and the weight of your hand on the small of my back, and the lips that can kiss me out of a bad mood and magically work their way into a smile that makes everything else in the world seem unimportant... I miss every little thing about you. I love you with all my heart.

-HSD

DISCRETION!

-Anonymous

House For Rent. Walk to CNU. 2BR
1 Bath - Call 595-1824. W/D included
-Joan Lee

I have a 2 bedroom apartment for next semester and I am in desperate need of one roommate! You pay only \$260 plus utilities a month! Less than you pay now for living on campus! It is a beautiful place! It is located in the Hiddenwood Apartment complex and is but a few blocks from CNU! Call me at 594-8668 or email me at ChandlerNT18@aol.com for more information!

-Nick Thomas

Visit CNU's up-and-coming United Campus Ministries webpage! It will excite and intrigue you!

-N.T.

Fight hate! Show your pride! CNU, come out and support LGBT People's in CNU's first annual LGBT Awareness Week this week, April 2-6. Come to a talk on religion in Christopher's, Mon. at 7. Participate in the day of silence on Wed. and help raise money for children with AIDs on Thursday. Also come out to the first annual Candle Light Vigil for Hate Crimes on Friday, 8 pm in Gaines.

-GSSU

Go Arizona! Beat Michigan State and then beat Duke once they beat Maryland!

-B.S.

My favorite color is blue.

-Pete

Marie,

I love and miss you a lot!

-Bubba

Tape-A-Quarter Classifieds are for students, faculty, staff and members of the alumni society only. Simply write your ad and tape a quarter to it.

- Rates are 25 cents per ad.

- All ads are run in one issue only. For multiple runs call MS. CLASSIFIED (594-7196) for further information.

-Tape-A-Quarter Classifieds must be submitted on an official Tape-A-Quarter form. Forms can be obtained from The Captain's Log newspaper stands. Ads submitted on anything other than the official form WILL NOT be published.

-Included on the form must be your

name, phone number and the date that ad was submitted. Failure to include such information will result in ad not being run.

- Tape-A-Quarters must be turned in to our office or left in our convenient drop-box located on the first floor of the Campus Center next to the Game Room or by mailing to: The Captain's Log, Classified Department, 1 University Place, Newport News, Virginia 23606.

-Tape-A-Quarter ads are published on a space available basis. Those ads which are not published because of space constraints will be published in the next issue.

official tape-a-quarter form

CAPTAIN'S LOG

tape

name, phone number and today's date (required)

print message below. do not exceed six lines