

CAPTAIN'S LOG

VOLUME 24 NUMBER 3

CHRISTOPHER NEWPORT UNIVERSITY NEWPORT NEWS, VA

September 14, 1992

NEW S Gamma Phi Beta

The sorority received an award from the Special Olympics for the money raised in their annual Rock-a-Thon.

Story Page 5.



Photo courtesy of Campus Police

ARTS The Merry Widow

The Opera Workshop will be presenting this famous operetta this Fall. It will be directed by Mary Matthews.

Story page 4

OPINIONS Civil War

The Yugoslavian civil war tops national news again; the U.S. should not intervene in it.

Story Page 2

SPORTS Soccer

Steve Downes spurred the Captains on with his great defensive play against Marymount University.

Story Page 8



Photo by Keith Hassan

CNU takes safety precautions

By Katherine E. Hill
Staff Writer

Have you ever needed police or emergency assistance at night, but there was no one around and no way to get in touch with anyone? If the answer to this question is important to you, the administration at Christopher Newport University has an answer.

On Thursday, September 3, Mr. John R. Norman III of HRTW Communication Systems addressed members of administration, students and concerned faculty about a solution to our problem—the Talking Patrolman Callbox system.

The emergency Callbox is a wireless, communication system designed to provide students and visitors with a way to communicate directly with the Campus Police. To request help or to ask for information via the two-way radio system, one simply presses the button on the callbox. An emergency call is instantly placed and goes out to every radio receiver on the same frequency. The Talking Patrolman boxes are equipped with an identification system that identifies the origin of the call to the Campus Police. The officer responding to the call would then be able to communicate verbally with the caller, in order to ascertain the nature of the problem. If the caller is unable to respond, the officer would be able to call back and listen to what is occurring around the vicinity of the callbox.

HRTW can also provide users with an optional pendant transmitter for

handicap students. The transmitter is a hand-held device that, once activated, would issue a signal to the nearest callbox. The callbox would notify the officer that the call had been issued by a handicapped student. The emergency callbox can be customized to meet the special needs of CNU. The callbox can be fitted with additional option buttons that would allow users to call only the service they need: an escort service, Campus Police, etc. As well, the front message panel can be customized, and the callbox can be programmed to transmit bi-lingual messages.

HRTW began producing the Talking Patrolman Callboxes when the need for an emergency system arose at Virginia Wesleyan College. Virginia Wesleyan began experiencing problems with local teenagers frightening students at night by jumping out of bushes. To combat the problem Mr. Dick Safford, a member of Virginia Wesleyan campus security, and Mr. Norman began working on the prototype for an emergency unit. Their original concept was to provide a system that would put students instantly in touch with security, much in the way a walkie-talkie works, but in a box to prevent the unit from being stolen or destroyed. The result of their endeavor was the Talking Patrolman Callbox. Virginia Wesleyan has been utilizing these callboxes since their development six years ago. According to Mr. Safford, "they [the callboxes] are the only way to go to give students access to security." Mr. Safford also commented that many "parents feel reassured when they know that the

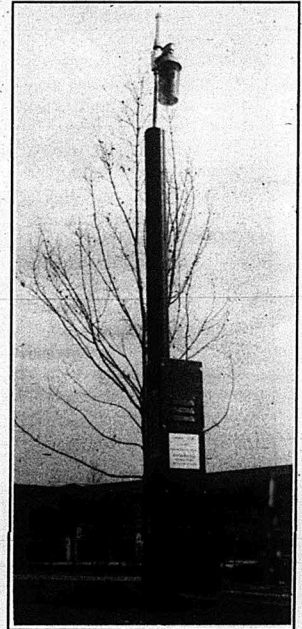


Photo courtesy of HRTW
A model of the HRTW Talking Patrolman Callbox.

boxes are there." Mr. Safford is currently working with student organizations to raise money to purchase additional callboxes for the campus, that will be imprinted with

Please see Callbox on page 8

Election could make or break CNU

By Diane L. Seymore
News Editor

While the race for President of the United States has been gaining all of the headlines, there are other important reasons to vote this year.

On November 3, the General Obligations Bond Bill (GOB) is subject for approval by Virginia voters. According to Mr. William L. Brauer, Vice President of Administration and Finance, the GOB is a long term debt backed by the full faith in credit by the Commonwealth.

The GOB has already received majority approval by the Virginia General Assembly.

The three components of the GOB include higher education, natural resources, and health and human resources.

Christopher Newport University has three projects pending on the approval of the bill, according to Brauer. First, CNU plans to spend \$3,626,000 to replace the outdated infrastructure with new heating and air-conditioning systems. Second, the library edition phase three will be built for \$2,516,000. Third, is the acquisition of Ferguson High School for \$10,834,000.

"All three projects are significant," says Brauer, "But certainly the

Please see Vote on page 6

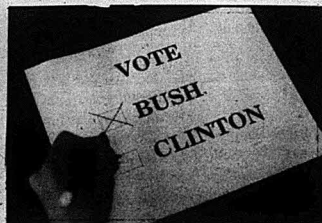


Photo by Keith Hassan

Issue of the Week

Family Values

From the Left

From the Right

By Jared L. Thornton

Before this election, "family values" meant that kids ate free at Denny's. But thanks to Quayle's relentless attacks upon Murphy Brown, they now have a different meaning.

Bush claims that he exemplifies true family values. I consider these values to include honesty, trustworthiness, and reverence, among other traits, to represent "good family values."

However, the S & L scandal, Iran-gate, "NO NEW TAXES" (which he has renewed), Bush's failure to adequately address AIDS, the constant blaming of a "gridlocked" Congress to cover Bush's effectiveness are all examples of how this administration has failed to take responsibility for their own actions and have passed the blame.

Are these the values that you would pass on to your children? I hope not.

By Steve Sicheloff

Many in the democratic party would like you to think that family values don't matter. Then they say that Bush talks about family values, but doesn't deliver.

Since family almost inevitably shapes character, it is wrong to say that family values don't matter.

As for family-oriented policies, consider George Bush's proposal to let parents pick the schools that their children will attend. His plan gives power back to the family where it belongs.

A parent can choose to send his child to a public, private or religious school and the government will provide the money to pay for the choice. Schools will be forced through competition to improve. Over 60% of the population supports the plan. The Dems oppose it.

U.S. should not intervene in Yugoslavia's ethnic civil war

By Steve Sicheloff
Opinions Editor

Every now and then the war in Yugoslavia finds its way onto the evening news. Over the summer the seige of Sarajevo persuaded some Americans to call for intervention.

Then the war gateway to Hurricane Andrew.

Last week the civil war leapt to the forefront again with the downing of an Italian cargo plane carrying relief supplies, blankets in this case, for the city.

Once again, some called for U.S. air strikes to break the Serbs' hold on the city that hosted the 1984 Winter Olympics. Politicians and armchair strategists said that we should treat Serbia as we treated Iraq—harshly.

As Lloyd Bentsen might have said, Serbia is no Iraq, and a war in the Balkan region of Europe would not be the same as a war in the desert. For the same reasons it is wrong to enter the Yugoslavian fray.

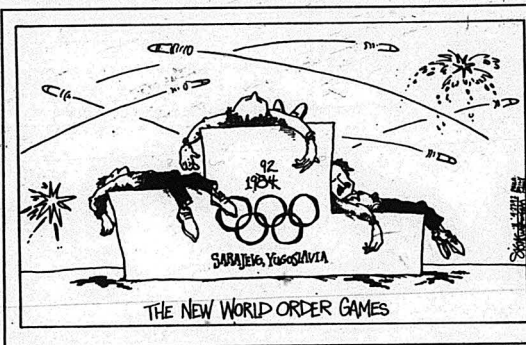
Iraq invaded a sovereign nation in 1990, taking two states and making them one. Yugoslavia presents the opposite: one state divided into five. In strictly chronological terms, Croatia started the civil war by declaring independence, sort of like the Confederate States did as our own Civil War started. Unlike our Civil War, however, Croatia and Serbia have a definite history of hatred, and

they don't need much reason to go gunning for each other.

During World War II, for instance, Croatia sided with Nazi Germany and began exterminating Serbs just as the Nazis killed Jews in their country. There stands in the former Yugoslavia a huge flower made of concrete. It is a monument to the

heavy equipment of the Yugoslav army—up to 75% according to various sources—was commanded by Serbs. So when the country split, the Serbs took the weapons with them, leaving Croatia to defend itself with only a few tanks and rifles.

It is this Serbian army of tanks and artillery that the U.S. would most likely face if we intervene. We would also confront terrain which does not lend itself to finding targets easily. The territory there is covered



hundreds of thousands of Serbs that the Croats and Germans executed.

Of course, the Serbs aren't any better humanitarians. In addition to their present ethnic cleansing, guerrilla forces from the Serbian resistance slaughtered Croat civilians and destroyed their villages during the same war.

The Muslims in Bosnia and Herzegovina (they are two separate regions) fought against both armies, but are more or less a sideshow to the massive killings by the other forces, although they did suffer.

Are we supposed to support barbarians in Croatia or Serbia? Neither is very deserving of the help or the lives it would take to bring peace, if it can be brought. The country was peaceful before the war only because the communist system allows for forced co-habitation.

Also, none of the armies want peace right now. The Serbs want more land, Croatia wants its land back, and Bosnia and Herzegovina want revenge.

Serbia has a great military advantage now militarily because most of

with hardwood forests and mountains. Iraq was a pretty flat desert. The Serbs also dig caves in those mountains, huge caves to store supplies in. The Serbs could pull artillery out of the caves, bombard a target and then retreat back into the mountain, much like the Vietnamese did during that infamous fiasco. Iraq had no such option.

We could bomb every cave our intelligence services find, but are we going to commit soldiers to seek out and kill the snipers that lurk in every building in Sarajevo, or will we flatten all the buildings in every besieged town from the air? Either way, many will die. American soldiers will be easy prey walking around the streets; and leveling every city will undoubtedly kill more civilians than the Gulf War did, in addition to leaving rubble that the surviving snipers could use to harass any clean up efforts.

Perhaps the most important factor in this is that this is a European war and Europe wants no part in ending it. Let's take our cue from them and continue the relief efforts.

Letters

Republicans are wrong

Horrified I am. Simply horrified. I have a nodding acquaintance with Steve Sicheloff, *The Captain's Log's* Opinions Editor. Basically, he seems to be a good man—you can usually count on him to come up

with some good jokes concerning the faculty, and he is fun to talk to.

Unfortunately, everyone has their faults and I have just recently discovered Mr. Sicheloff's—the faintest whisper of an anti-Democrat, pro-Republican bias in his latest columns.

Republican! I couldn't believe it. The ramifications are frightening. Let

me explain, first, the basic difference between Democrats and Republicans. Let's say you're in *The Terrace* and accidentally spill a large Pepsi all over your brand-new, very expensive, dry-clean only suit or dress. A Democrat would stop and help you clean yourself up. Granted there is a chance he might

THE CAPTAIN'S LOG

ROBBY HIPPS

Editor-in-Chief

LORI COX

Advertising Director

KEITH HASSAN

Photography Editor

DIANE SEYMORE

News Editor

JOYCE KUSTER

Copy Editor

CHANNING COLE

Proofreader

JEROME ZUKOSKY, Advisor

KATHERINE HILL

Managing Editor

TIM WATTS

Account Executive

STEVE SICELOFF

Opinions Editor

NANCY MERRIMAN

Sports Editor

DIANNA MCKELLAR

Arts Editor

THE CAPTAIN'S LOG, the official student newspaper at Christopher Newport University, is published each Monday during the academic year, except holidays and final examination periods by Byerly Publications.

News contributions are accepted by telephone (804-594-7196) or at THE CAPTAIN'S LOG office (Room 223 of the Campus Center).

Circulation inquiries and advertising rates are available upon request by telephone or mail.

THE CAPTAIN'S LOG welcomes letters from its readers. Send to: The Captain's Log, Christopher Newport University, 50 Shoe Lane, Newport News, Virginia 23606. They may also be brought to our office or left in our mailbox on the second floor of the Campus Center. Please sign the letter and provide full address and telephone number for verification purposes. Students: Please indicate your class status. If the writer is affiliated with an organization, that may be noted.

THE CAPTAIN'S LOG reserves the right to edit letters according to style, subject and length, as well as refuse publication. Letters will be printed anonymously upon request.

Corrections to THE CAPTAIN'S LOG will be published in the issue following the error.

Letters

screw up and leave you with more of a mess than you had to start with, but at least he tried. Whereas a Republican would know EXACTLY how to clean your clothes, would even have a bottle of Miracle Stain Remover in his pocket, but would refuse to help you because you should by-God do it yourself, without any Outside Interference. Especially if you are a woman or minority.

Furthermore, most selfishly self-righteous goobs tend to drift toward the Republican Party, most notably Pat "Feminists are Lesbian Witches" Robertson and Jesse "Get back in them cotton fields, boy!" Helms. I admit the Democrats have pulled a few boners in their time, most notably Hizzoner the Governor, but my main complaint about him is that he's cut back on education. I guess he thinks students should by-God pay for it themselves without Outside Interference. Tres Republican, non? Maybe that is his problem. Besides, no Democrat can hold a candle to Richard "Tapes" Nixon or Ronald "WHAT foreign policy" Reagan.

All joking aside, let's take a brief look at the attitudes of some right-wing Re-

publicans.

1. "Pro-Life" fanatics—protect the sanctity of life by fire-bombing abortion clinics.

2. David Duke—Honor Christian values by burning the Christian cross.

3. George Bush—Become "The Education President" by cutting education funding.

4. The Conservative Supreme Court—strengthen civil rights by making it more difficult to file sexual- and racial-harassment claims.

5. Some idiots in New Jersey—Promote family values by denying welfare benefits to women who marry.

6. All registered Republicans—Ignore the problems of crime, AIDS, teenage dropouts and pregnancies, rampant drug abuse, inadequate medical care and the recession by pledging to support...the Anti-Flag burning President!

Maybe we *should* put prayer back into schools—if the Republicans get their way our children will *need* divine help to make it.

Jennifer Abel

Op. Editor's response:

The tone of your letter is the usual whining democrat—long on sound bites and lacking in facts. Here are the facts.

Republicans have better manners and would certainly stop to help you clean

your suit off in the Terrace, a democrat would call for taxpayers to not just pay the dry cleaning bill but buy three or four new suits for you. On a larger scale, consider how many Republicans give to charity organizations. Just because we think charity should be voluntary does not mean we dislike people.

Your attack on Pat Robertson is pretty distorted. A person should not be chastised for having morals and teaching others about them. As for Jesse Helms, did you know that he has an African-American adopted son?

Richard Nixon did have his Watergate, but you seem to forget that a well-respected democratic president, Franklin Roosevelt, also taped such Oval Office conversations and many others. He just had the good fortune to die before anyone found out.

As for Reagan's foreign policy, your ignorance is appalling. It was Reagan's arms buildup that helped destroy the Soviet empire; it was Reagan's support of Afghan rebels that stopped Soviet expansion and it was Reagan's support of the Nicaraguan "Contras" that led to the demise of Daniel Ortega's communist regime through free elections.

A few abortion clinic bombings does not speak for the entire party and the Republicans do not condone such violence.

David Duke's radicalism is not endorsed by the Party either. He adopted the Republicans; the Republican Party did not adopt him or his policies.

George Bush may have trimmed edu-

cation funding, and I haven't seen any evidence of that. But let's assume that you have your facts straight this time. The federal government pays only six percent of education costs to begin with. The rest comes from the state (about 48%) and cities (about 47%). So go cry to Wilder and don't try to pawn things off on Bush.

Your Supreme Court accusation is just screwed-up, too much so to even respond to.

As for New Jersey, the case shows that states can no longer afford the extravagant welfare programs of the past. California had a recent budget crunch which proved the same.

All registered Republicans do not ignore those social issues which you brought up. We do have enough brains to see that throwing money at all of these problems, which is what democrats favor, has not improved the situation. Poverty has gone up with each increase in welfare funding since the 1960's. Bush has pushed for stronger penalties for criminals and the Dems have shot it down every chance. Under President Bush, the funding to fight AIDS amounts to more money per AIDS patient than per cancer patient. Blaming rampant drug abuse on the Republicans is the same as blaming Daffy Duck for the Lebanese civil war. The recession was caused in large part by the decline of defense contracts, which put people out of work. This will only increase in the years to come and Bush is just unfortunate to be caught in a transition period for U.S. industry. By the way, instead of a phased reduction in defense spending, Clinton favors gutting the whole establishment which will put many more out of work. Layoffs at Newport News Shipbuilding should really open your eyes.

HOT PROGRESSIVE MUSIC



presents the CUTTING EDGE CONCERT SERIES TUESDAY NIGHTS

100 NEWMARKET SQUARE WEST
NEWPORT NEWS, VA 23605
(804) 245-3313



featuring

KILLER NEIGHBORS

SEPTEMBER
15TH

Sponsored by

COMING SOON:
SEX POLICE
SEPT. 22ND



Present your C.N.U. student I.D.
for FREE entry every Tuesday

Must be 21 years of age with proper I.D.

CNU Opera Workshop performs famous operetta

By Dianna McKellar
Arts Editor

The Christopher Newport University Opera Workshop presents *The Merry Widow* this fall.

Auditions were held September first. Thirty CNU music and/or theatre majors were cast in the Operetta. Lara Brier plays the leading role of Adele. Opposite her is Jeff Joyner, playing the Prince.

The cast and crew currently rehearse from 7:00pm-10:00pm on Tuesdays and Thursdays. Starting November first, they will rehearse every week night from 7:00-10:00.

Mary Matthews, director of *The Merry Widow*, and Ruth Winters, the musical director, decided during the summer that the Opera Workshop would perform the two act version of the operetta instead of the three act version to make it more compact and humorous.

The Merry Widow is set in the 1940s with art deco setting designed by David Balthrop, CNU Theatre Manager. Costumes are designed by Pat Dewey.

The operetta is about a young, beautiful, very wealthy widow searching, among her many suitors, for true love. Says Winters, "It is a light romantic

comedy."

"*The Merry Widow* is one of the most famous operettas ever performed," Matthews comments, "It has been performed over a quarter of a million times.

The show was originally written in German, premiering in Vienna in 1905, but has since been translated in at least twenty-five different languages."

Hollywood has created three famous versions of *The Merry Widow*. Jeanette MacDonald and Maurice Chevalier are two of the most famous people to star in the production.

The show is full of many well known waltzes, one of the most prominent being *The Merry Widow Waltz*. "We know everyone will go out humming the melodies," Says Winters.

The Merry Widow will be performed in the Gaines Theatre November 18th through the 21st at 8:00pm. There will be a matinee performance on November 22nd at 2:30pm.

Tickets are priced from \$3.00 to \$5.00. For ticket information call 594-7552.

Upcoming spring productions include the Opera Workshops performance of *Jesus Christ Superstar*.



Photo by Keith Hassan
Ruth Winters(left), the musical director, and Mary Matthews, the executive director, team up in production of *The Merry Widow*.

Williamsburg Players open with *Agnes of God*



The Williamsburg Players begins its 35th season with the presentation of *Agnes of God*, a drama by John Pielmeier. The play opens Thursday, September 17 and runs through Saturday, October 10 with performances Thursday through Saturday at 8:00pm at the James-York Playhouse on Hubbard Lane in Wil-

liamsburg. There will be additional Saturday matinee performances at 2:00pm on September 26 and October 3.

The play revolves around Doctor Martha Livingstone, a court-appointed psychiatrist, who is asked to determine the sanity of a young nun accused of murdering her own baby. In searching for solutions to various mysteries, all involved are forced to face some harsh realities in their own lives and to re-examine the meaning of faith and commitment to love.

The role of Doctor Livingstone is played by Ree Stone, a veteran actor who returns to the Players' stage after a 17-year absence. Her last appearance for the Players was as Elaine in *Last of the Red Hot Lovers*. During the

interim she acted in community theaters in Chicago and Newport News.

Melissa Vaughn plays the role of Agnes, the young nun. Regular Williamsburg Players theater-goers will remember Vaughn as the street-wise Sister Robert Anne in last season's finale, *Nunsense*. She has also appeared in various other area theaters in such productions as *Cabaret*, *42nd Street*, and *Oliver*.

The role of Mother Miriam Ruth, the mother superior at the convent where Agnes lives, is played by Antoinette Brennan.

Brennan has most recently appeared in the Player's stage as Ester in *The Prince* and as Miss Claire in *Steel Magnolias*. She played Mrs. Boyle in the Peninsula Community

Theatre's production of *The Mousetrap* and performs with the Colonial Williamsburg's Company of Colonial Performers.

Lori Paschall serves as director for this, her fifth directorial project for the Players. She has also directed such shows as *Veronica's Room*, *Bell, Book & Candle*, and last season's smash opener, *Dial M For Murder*.

Paschall was most recently seen on the Players' stage as the Reverend Mother in last season's run-away hit, *Nunsense*.

Reservations may be made by calling 220-4379. Ticket Prices are \$7.00 for general admission, \$6.00 for senior citizens and students, and \$3.00 for children 12 and under.

Poquoson Art League

The Poquoson Art League is sponsoring its 12th Annual Poquoson Seafood Festival Art Show at Poquoson Municipal Park. The art show will be held Saturday, September 19 from 10:00am to 6:00pm and Sunday, September 20 from 12:00pm to 6:00pm.

More than 150 artists and craftsmen will compete for the \$1,350 in awards to be presented at the show. Judges will present the awards in the Crafts and Fine Art categories.

The Poquoson Art League also sponsors an art contest and exhibit of student art work. Awards will be presented in several categories.

The Art and Crafts show is an annual highlight of the Poquoson Seafood Festival, which will also feature a parade, live musical entertainment, food, fireworks and other family entertainment.

The Gaines Theatre Presents

All My Sons

An Arthur Miller Play
Fridays and Saturdays Oct. 2nd—Oct. 10th

BUY A

TAPE-A-QUARTER

CLASSIFIED!!

Terrace renovations: a cause for discussion

By Julianna Jackson
Contributing Writer

The Terrace has been the topic of discussion among students who do not feel it is an alternative to a large and impersonal cafeteria setting.

Charles Woody, a former employee, says the Terrace has lost its friendly ambience. "Before, it felt like a coffee house, a place for gathering. Today, it feels like a conservative beanyery." He went on to say that the Public Address system has effected the ambience, as well.

"Students don't congregate any more," says Woody, "the place is oppressive and restrictive. There was a time when you'd come in the Terrace and find a good mix of people, fraternities, sororities, and small groups meeting and relaxing between classes over an al a carte menu and made to order lunch - gone are the days." No more beer on tap. No more burgers on buns.

"You walk in here and it seems like a tomb," says Kelly Kerchner, "this is supposed to be a college hangout."

"I have seen a switch in clientele," says an employee, "you don't see the professors in here anymore. Last year you could have one-on-one sessions." He adds that now they go to other local establishments.

Mr. Phil Nader maintains that the Terrace wants to cater to everyone, not just to particular "cliques."

He does not want an atmosphere

which intimidates freshman and other underclassmen. The new concept that goes along with the new face lift is that of the "counter" concept. "It's all a part of dealing with growing pains," says Nader.

"We've cut service time, transaction time, waiters and waitresses because that's what the students want. They want to go into the Terrace, get their food, and get to class," he says. According to Nader, the major complaint in the past is that the service was slow.

An employee of Food Services says that service "definitely has not improved. You have only one serving area instead of a whole bar and no waiters when last year there were at least three."

Kerchner says that the line for food is monotonous. "Why would anyone stand in line when you can run over to Subway and get food faster and cheaper."

Carla Steever adds that she can no longer afford to eat at The Terrace like she did last year, "I eat in the cafeteria now, or bring my lunch."

According to Nader, there are a few new implements in the Terrace such as a hot plate out front, a board for mealtime specials, clean cut menu boards and a few decorations here and there, but there have been no major renovations.

Everything that has been done to make the place run efficiently was done by students and food service staff.



Photo by Keith Hassan

Students wait in line at The Terrace for food. New implements such as the clean cut menu board, "counter" concept, and hot plates have been added to try and improve service and cater to the students wants.

"Every time they get something good in The Terrace going they get rid of it...the sandwich bar and the salad bar," says Student Government Association President Randy O'Neil. "The service is slower than a turtle in molasses."

When asked why an Italian menu? Nader responded by saying that the national index suggests that Italian is popular and trendy.

"We're trying to figure out what we do best and do it well and fast, we can't be everything to everybody."

What about what students want? As the Terrace moves away from what Nader refers to as the "dinosaur" age,

the plan is to implement a computer identification system and a declining balance system. "Everything we're doing is for the student," he says. "Students are welcome to join the food services advisory committee."

Do not ask for beer on draft. Nader says that draft beer is not cost effective according to the volume.

An employee says that about 80 percent of the beer bought was on draft, and about 20 percent was in bottles.

"It would be cost effective if they recycled the bottles, but now they just simply throw them away," the employee says.

Gamma Phi Beta receives award for philanthropy

By Jessica Marilla
Contributing Writer

Whoever said that Rocking the night away is a bad thing, was wrong. This week Gamma Phi Beta received an award for doing just that.

Last fall the sorority had a "Rock-a-thon" to raise money for the Special Olympics.

The sorority raised approximately \$300 from pledges of certain amounts per hour they rocked, as well as base donations for their cause and efforts.

They had two rocking chairs out on the lawn here at Christopher Newport University.

They began rocking at 8 a.m. and rocked until 8 a.m. the next day. Each member of the sorority participated in the event for at least a one hour shift, and some rocked longer.

"Because I didn't have a class the next morning, I took a two hour shift from 1 a.m. to 3 a.m. and then stayed out to keep everyone company," said Kristin Collins, President Gamma Phi



Photo courtesy of Campus Police

The Gamma Phi Beta Sorority with the award for their efforts in raising money for the Special Olympics via their annual Rock-a-Thon.

Betta.

"It was pretty chilly outside, but everyone was so beyond tired we were actually awake and silly... everyone was in good spirits," said Collins. "It

was nice to know something as simple as rocking on a chair was benefiting someone."

CNU's Campus Police have been involved with fund raising for the

Special Olympics for the past five years including activities like the Virginia Law Enforcement Torch Run.

Sergeant Brenda Gesselman of CNU's Campus Police has been involved with the fund raising from the start and wanted to get the students involved with the efforts.

"I asked the sorority (Gamma Phi Beta) if they would like to help raise money and they came up with the idea for the Rock-a-thon," says Gesselman.

The fund raising award was given according to the level of money raised. The sorority received a bronze plaque for raising at least \$250.

Silver is awarded for \$500 and a gold plaque is given for raising at least \$1000.

"I am really glad to see the sorority getting credit for their efforts and am willing to help anyone who would like to raise money for the Special Olympics," says Gesselman.

Gamma Phi Beta is planning to have the event again this semester and are still working on the details.

Financial Aid eligibility-Do you measure up?

By Jessica Marilla
Contributing Writer

Is it becoming more difficult to receive financial aid as tuition rates rise and government funding is in the pinch?

According to Mr. Sid Dugas, the Director of Financial Aid, there is aid available for all that meet the criteria defined by the Federal and Local Financial Aid offices and this criteria has not changed.

There are two types of financial aid: need-based and non-need-based aid. Need-based is awarded on the level of financial need alone. Need-based aid is also called "gift aid" in that it does not have to be paid back. Need-based programs include: Pell Grants (Federal), Supplemental Education Opportunity Grant (CNU), College Scholarship Assistance Program (CNU), VA State Student Scholarships (CNU), and Private Scholarships (CNU).

The non-need based aid that does not require repayment includes: Virginia Tuition Assistance Grants, Merit Based Scholarships, Civic Organization Scholarships, ROTC Scholarships, Virginia Transfer Grants, and other Private Programs.

There are also loans and employment available to students on both need and non-need based levels. Need-based loans include the Perkins Loan (CNU)

Founder's Day celebration: speeches, cancelled classes, and a luncheon

By Diane L. Seymore
News Editor

On Thursday, September 17, morning classes will break at 10 a.m. so that everyone may attend the official dedication ceremonies of America's newest state university.

All faculty and students are invited to the Founder's Day ceremonies and the complimentary luncheon that will follow.

The convocation will commence at 10:30 a.m. with the processional of dignitaries on the Great Lawn. Music in the processional will be provided by the Eastern Virginia Brass Quintet.

Dr. Robert M. O'Neil, former President of the University of Virginia, will deliver the Keynote Speech.

An honorary degree will be presented to Mr. John Warren Cooke, the former speaker of the Virginia House of Delegates. Cooke will be recognized as one of the key legislators that first established Christopher Newport College in 1960. Today, he is the publisher of the Gloucester-Mathews Gazette Journal.

Two former Board of Visitor members of eight years, Betty N. Levin

and Stafford Student Loans (Federal). The need-based employment programs include the Federal College Work-Study Program (CNU) and the Virginia College Work Study Program.

Other loans include: the Pickette and Hatcher loan, the PLUS loans (for those dependent on their parents) and the SLS loan (for those considered self-supporting). Employment can also be recommended for on-campus jobs and for off campus job referrals.

If the student completes all of the forms and has everything to the CNU financial aid office before the April first deadline then he or she is eligible for all of the need-based aid.

Those applying after the deadline are only eligible for Pell Grants and Stafford Student Loans.

Student eligibility is determined by

and Jack A. Georgalas will be inducted into the Founders Mace Society.

Other dignitaries who will speak as representatives of CNU are: Mr. Alan Witt, Rector of the Board of Visitors; Mr. Randall S. O'Neill, President of the Student Government Association; Dr. Ronald S. Mollick, President of the Faculty Senate; and Mr. Gerald Bright, Chairman of the Alumni Society/Campus Police Chief.

According to Mr. John N. Campbell, acting Vice President of Development for CNU, the formal ceremonies are expected to conclude about 11:30 a.m. Immediately following the recessional, lunch will be offered free under the pine trees near the Campus Center. Campbell says that, "the lunch will be like a pig-pickin with four buffet tables open." For those who do not care for pork, there will also be beef hot dogs offered.

Later, on Saturday, September 19, the celebration will continue with dinner and dancing at Christopher's. Tickets for the filet mignon dinner are \$25 per person and must be reserved in advance. Dinner will be followed with dancing led by the "Limosine" band.

IMPORTANT DATES

Feb. 1992

□ Complete and mail your Financial Aid Form to College Scholarship Service no Later than February 15, 1992.

Mar. 1992

□ Submit your Pell Grant Student Aid Report (SAR) to the Office of Financial Aid.

Apr. 1992

□ April 1, 1992 is the DEADLINE for applying for financial aid for 1992-1993 (Except Pell Grants and Student Loans). Your CNU Application for Financial Aid and your Need Analysis Report from CSS must be on file to be considered an on-time applicant.

taking the estimated cost of school compared with the expected family contribution (which is determined by the College Scholarship Service using the information provided on the Financial Aid form).

The difference between the amount of cost and the amount received through family aid equals the student's total eligibility.

The Financial Aid to be awarded is then determined by the student eligibility for each program, the total amount of money available and the total number of applicants. This works out so that each student receives the same percentage of their total eligibility.

This year the students will receive 44.5% of their eligibility. The amount of money that is not covered by grants

and scholarships is then compensated through loans and employment opportunity. In this way all of those eligible will receive financial assistance.

"When the cost of tuition goes up and the average expected family contributions stay the same, or even go down with job loss, the eligibility goes up for need-based aid," says Dugas, "The state recognizes that the rise in tuition rates put low income families in a pinch, so they have allocated more money to financial aid programs."

CNU state allocations for State Scholarships and Loan Appropriations have gone from \$175,213 in 1987-88 to \$626,374 in 1992-93. While the money has gone up so has the number of applicants. The number of Financial Aid Forms processed has risen from 780 in 1986-87 to 1,929 in 1991-92.

In order for a student to continue to receive financial aid he or she must be making satisfactory progress towards graduation. Students agree to this clause by signing the application form. Satisfactory Progress is defined on page 13 of the Financial Aid Guide.

"Students who sign up for classes and then after the Add-Drop period decide to drop classes because of poor grades with concern for their GPA should know that they must also be making satisfactory academic progress," said Dugas.

in Virginia in 1968 and 1977, were for the purpose of higher education.

In this referendum, the GOB involves a total of \$612,900,000. Out of that total, \$443 million is related specifically to colleges and universities.

For anyone to vote on November 3, no matter what your reason, you must be registered to vote by October 3.

Any United States citizen living in Virginia who will be at least 18 by November 3 is eligible to vote. Registration must be done in person at the voter registrars office or at other special registration sites. Public libraries are open for registration during the week and on Saturdays. On September 22, there will be a special registration at CNU in the Campus Center from 11 a.m. to 1 p.m.

Voter registration is free. No identification is required. You just have to furnish your full legal name, home address, how long you have lived there, date and place of birth, social security number, and any previous place of registration.

In the state of Virginia you do not have to declare any party affiliation.

As long as you have voted within the last four years, your registration is still valid.

□ Vote

Continued from page 1

acquisition of Ferguson is important...we've already maxed out on campus."

Brauer is quick to add that the new dorm construction is in no way connected to the GOB bill.

"In the span of four to six years, we will double our existence on campus," explains Brauer. "Obviously it is very significant and important to us [CNU] that this GOB bill goes through."

The GOB will also affect the growth of all of the local institutions, not just CNU. Brauer estimates that there is approximately \$93 million in local money tied into the GOB. If the GOB is passed, Norfolk State University will have \$15,700,000, Old Dominion University \$33,200,000, Thomas Nelson Community College \$2,300,000, Tidewater Community College \$7,500,000 and William and Mary \$17,100,000.

The debt is issued in the form of bonds allotted only for the proposed projects. If a project does not take place the money is not spent.

Only two GOB's have been financed

BUY A TAPE-A-QUARTER CLASSIFIED

SGA NEWS

The Student Government Association would like to announce the opening of a position on the Executive Council. The position of Chairman of the Human Relations Committee has been vacated and a diligent, hard-working replacement is needed. If anyone is interested, he/she is encouraged to apply in person at the SGA offices in the Campus Center. The position needs to be filled as soon as possible.

General Assembly meetings will be held in CC 150 on alternating Fridays, starting September 25, at 3 p.m. Anyone interested in becoming a member of the SGA is invited to attend this first meeting of the semester.

The SGA would like to thank all the Student Orientation Leaders and the Staff of the Office of Student Life for recommending entering freshmen and transfer students to join the SGA.

We appreciate the interest shown by the new students but would appreciate more.

If anyone would like to learn more about the SGA, its purposes and goals, contact any Executive officer in the

SGA suite.

On September 16, the Office of Public Relations will sponsor the seventh semesteral Town Meeting. Town Meetings started in the fall of 1989 in order to provide a means of communication between the student body and its elected representatives (the SGA) and the administrators of the university. Traditionally, an SGA panel, Dr. Anthony R. Santoro and representatives of his administration, and the deans of the four Colleges have attended. The meeting will be mediated by Chris Mancill, the SGA Public Relations Chairperson. Students are encouraged to attend, ask questions about the future of the University, and voice any complaints they may have.

Finally, any student trying to balance college life, demanding professors, and a life at home should know that we are here to help. You are not alone, so don't give up! For help or for a referral to counseling services, call the SGA at 594-7197.

SGA News is a publication of the Office of Public Relations of the Student Government Association.

Energetic tutors wanted for learning disabled students

By Glen Vought
Contributing Writer

instructor. Patience, resourcefulness, perseverance and a good sense of humor are other desirable tutor qualities.

Students who are employed as tutors are paid \$4.25 per hour. If you are employed by more than one office within the University, your time per week may not exceed a total of 20 hours.

Students who are interested should get a Tutor Information Form, fill it out and leave it in the Office of Career and Counseling Services, Campus Center, room 146. Office hours are 8:00 a.m. to 5:00 p.m., Monday through Friday. Our phone number is 594-7047. Questions may be addressed to Glen Vought, Coordinator of Services for Students with Disabilities.

The Office of Career and Counseling Services wants to identify students who are willing to tutor, for a few hours a week, other CNU students who have learning disabilities. At the present time, there is a need for someone to tutor a student who is taking Calculus for Business and Social Science, (Math 135). There is also a need for a tutor for Financial Management, (Finance 323).

In addition to a confident knowledge of the subject, tutors must be able to help the student create a structure or system for learning the vocabulary, theories, methodology and other content required by the

Proof.

You can rely on Kaplan LSAT prep.

The Roman Numerals question format, sometimes called Triple True/False, has not appeared on the LSAT since February 1991. **Kaplan caught the change.** Not by accident, but because we have a team of professionals dedicated to analyzing the LSAT. **Kaplan updated all lectures, materials and sample tests.** So you'll spend every minute and every dollar getting ready for the test that you'll actually take.

Incriminating evidence.

Look at *Cracking the LSAT: 1993 Edition*. Publisher: The Princeton Review. Check pps. 16, 26, 53, 72, 80, 104, 120, 147, 151, 195, 223. And **especially** page 47. Ignore the faint scent of mildew.

For more information on proven LSAT prep, call:

1-800-KAP-TEST

KAPLAN
The answer to the test question.

Professor of the Week

Greg Henry

By Dianna McKellar
Staff Writer

Mr. Greg Henry was recently hired as an Assistant Professor of Art on campus. He obtained his Masters degree in Sculpture and Design in 1987 from Maryland Institute of Art. Henry taught at Virginia State University before coming to Christopher Newport University.

Henry is a native of South America, born in Guyana, and often uses scenes of his homeland as subjects in his art work.

Henry chose to focus on sculpting because he has always been interested in making three dimensional.

He also works with ceramics and will have a few pieces in the Falk Art Gallery Contemporary Ceramics Exhibition January 25 - February 12.

Henry says, "Art is a search for personal identity. Art is being creative, everyone has a creative ability."

When teaching beginners, Henry believes in "helping them develop their skill and having them realize

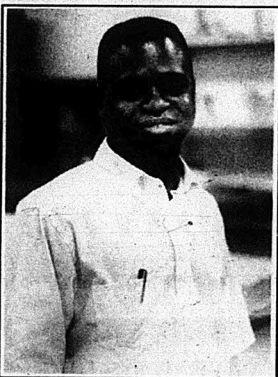


Photo by Keith Hassan

their potential by showing that they have the ability to create anything locked within them, then they can explore meaning and context."

Of working at CNU, Henry says, "I'm really excited to be here and I have some great goals such as upgrading the ceramics and sculpture studio and making an agenda for things I'd like to accomplish during the course of the year."

BRIEFS

Scholarships: Applications for the prestigious Rhodes Scholarship program, which enables graduates to continue their studies at Oxford University, are now available.

Approximately thirty American students are selected for the award, which provides tuition and a generous living allowance for at least two years of study.

Criteria include intellectual achievement, physical vigor, integrity of character, ability to lead, and concern for humanity.

To be eligible, one must be a U.S. citizen, between 18 and 22 years of age, who will complete a bachelor's degree before October 1993.

If you are interested in being considered as a Christopher Newport University nominee please contact Dr. Jay S. Paul in Newport News Savings Bank room 408 (phone: 594-7072).

Speaker: Mr. Will Corbin, Managing Editor of *The Daily Press*, spoke with CNU English majors last Tuesday, September 8.

Corbin gave the English students his experienced, first hand knowledge of the journalism industry. Professor Sheila Harrison, the instructor of CNU journalism classes, mediated the discussion.

Corbin asked the students for their

opinion of the new section in *The Daily Press*, *In Roads*, which replaced *Splash*. *In Roads* first appeared in last Sunday's edition of *The Daily Press*.

*This brief was written by
Cathy Cunningham.*

Retraction: The Philomantean Society was founded on March 4, 1852 in Macon, Georgia at Wesleyan College. The goal of the Fraternity is to "be to others what we would they would be to us."

Volunteers: Are you interested in making a difference in the life of a terminally ill person? Do you enjoy being a "good neighbor" (running errands, sitting with the patient, assisting around the house)? Are you a good listener? Do you have a few hours a week to give?

If you can answer yes to these questions, then Riverside Hospice invites you to join the Riverside Hospice Home Volunteer Team. Volunteers are needed for the Peninsula and Isle of Wight areas. Please call Riverside Hospice at 594-2745 for information.

Word of the Day

Copacetic: [ko-pa-'set-ik] means very satisfactory; fine; OK (two spellings are recognized: copasetic; copesetic)

Example: "How are you doing?"
"Everything is copacetic."

Callbox

Continued from page 1

the contributing organization's name.

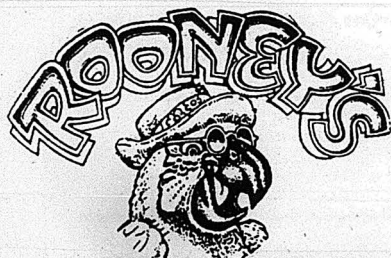
Louise Obici Memorial Hospital had the emergency callboxes installed about eight months ago in their hospital parking lots. Mr. Leo Therrien, of hospital security, stated that "we [security] are very satisfied with them...people know they're out there and they see the blue light and it [the callboxes] acts as a security device—they act as a deterrent."

The Talking Patrolman is easy to install and can be integrated into the existing communication system. Since it is wireless there is no need for additional telephone lines and there is no monthly fee after the initial installation. The callbox is versatile and can be installed anywhere that it is deemed necessary—in elevators, on

light poles, walkways, etc. The Talking Patrolman is also equipped with an anti-vandalism mechanism that immediately notifies officers if anyone tampers with the box.

The callbox runs on electrical power, but can be equipped to operate on solar or battery power. In case of an electrical outage, the callbox will continue to function for 2 1/2 days. Since HRTW is the only producer of the emergency callboxes in the Commonwealth of Virginia, the company is able to offer the system to CNU with a 5 year warranty on parts and labor rather than their standard 2 year warranty.

HRTW is offering these callboxes at an average of \$1500 to \$1900 per box, installed. Each additional button would cost about \$100 extra per box and \$35 per box to equip them with the pendant transmitter service.



GRILLE & BAR

GET OUTTA THE RAT RACE!

Have some fun in a friendly neighborhood, kick-back club.

"BUFFETT NIGHT"

DAVID CARTER

WEDNESDAY SEPT. 16TH

\$6.50 LB SHRIMP AND \$.10 WINGS ALL NIGHT

"FREE BUFFETT T-SHIRT GIVEAWAYS ON EVERY WEDNESDAY"

MON. 14TH - MIAMI VS. CLEVELAND 9:00 P.M.

FREE MUNCHIES AT HALFTIME

THURS. 17TH - "KAROAKE" JOIN THE MADNESS!

FRI. & SAT. 18TH, 19TH - DAVID CARTER

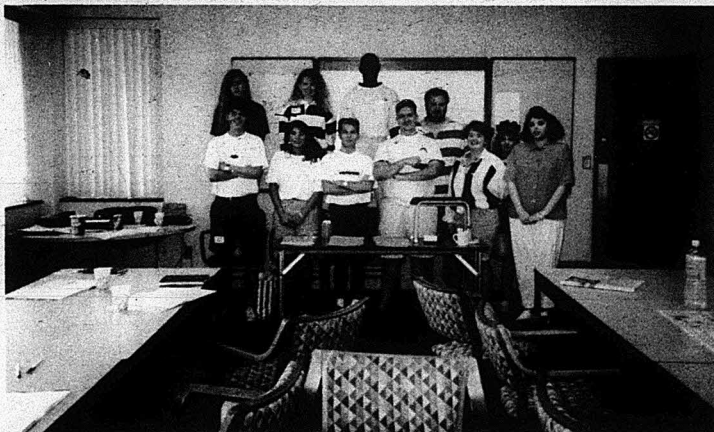
SUN. 20TH - NFL ON WIDE SCREEN TV'S

1144 Big Bethel Rd. Ext. 261 A
to Big Bethel, Hampton Woods
Plaza (next to Farm Fresh)

**MUST BE 21 ON ENTERTAINMENT
NIGHTS PROPER ID REQUIRED**

SGA

Traditio Cum Providentia



ELECTIONS

PUBLIC RELATIONS

HUMAN RELATIONS

STUDENT SERVICES

CONSTITUTIONAL REVIEW

VP ACADEMIC AFFAIRS

VP STUDENT AFFAIRS

PRESIDENT

GENERAL ASSEMBLY

EXECUTIVE COUNCIL

THERE IS A PLACE FOR YOU.

NOW ACCEPTING APPLICATIONS FOR
SENATORS OF THE GENERAL ASSEMBLY
*HELP MAKE 1992 A PROSPEROUS
YEAR FOR CNU AND YOU!*
JOIN THE SGA!!!

PRINCIPLES of SOUND RETIREMENT INVESTING

Monthly Expenses	Income
Rent 775	1915
Telephone 6032	845
Gas 60	
Electricity 4568	
Car Loan 240	
Student Loans 175	
Insurance 125	
Credit Cards 165	
Overdraft (Chk) 189	
Savings 300	
Investment 100	
Other 50	
Total 700	275

IRONICALLY, THE TIME TO START
SAVING FOR RETIREMENT IS WHEN IT LOOKS
LIKE YOU CAN LEAST AFFORD IT.

Can't afford to save for retirement? The truth is, you can't afford not to. Not when you realize that your retirement can last 20 to 30 years or more. You'll want to live at least as comfortably then as you do now. And that takes planning.

By starting to save now, you can take advantage of tax-deferral and give your money time to compound and grow. Consider this: set aside just \$100 each month beginning at age 30 and you can accumulate over \$192,539* by the time you reach age 65. But wait ten years and you'll have to budget \$227 each month to reach the same goal.

Even if you're not counting the years to retirement, you can count on TIAA-CREF to help you build the future you deserve—with flexible retirement and tax-deferred annuity plans, a diverse portfolio of investment choices, and a record of personal service that spans 75 years.

Over a million people in education and research put TIAA-CREF at the top of their list for retirement planning. Why not join them?

Call today and learn how simple it is to build a secure tomorrow when you have time and TIAA-CREF working on your side.

Start planning your future. Call our Enrollment Hotline 1 800 842-2888.



Ensuring the future
for those who shape it.™

*Assuming an interest rate of 7.5% credited to TIAA Retirement Annuities. This rate is used solely to show the power and effect of compounding. Lower or higher rates would produce very different results. CREF certificates are distributed by TIAA-CREF Individual and Institutional Services.

SODA CANS,
NEWSPAPERS,
PLASTIC BOTTLES,
PAPER

THESE PRODUCTS
ARE ALL A PART OF OUR
EVERYDAY LIFE.
BY TAKING A FEW
MOMENTS A DAY TO TOSS
THESE ITEMS INTO A
RECYCLING BIN YOU ARE
SAVING TREES, WILD LIFE,

THE RAINFORESTS, OUR
NATURAL RESOURCES
AND THE PLANET ITSELF.
THE EARTH HAS
SUSTAINED LIFE FOR
MILLIONS OF YEARS.
DON'T YOU THINK
IT'S TIME
WE SAVED HERS.

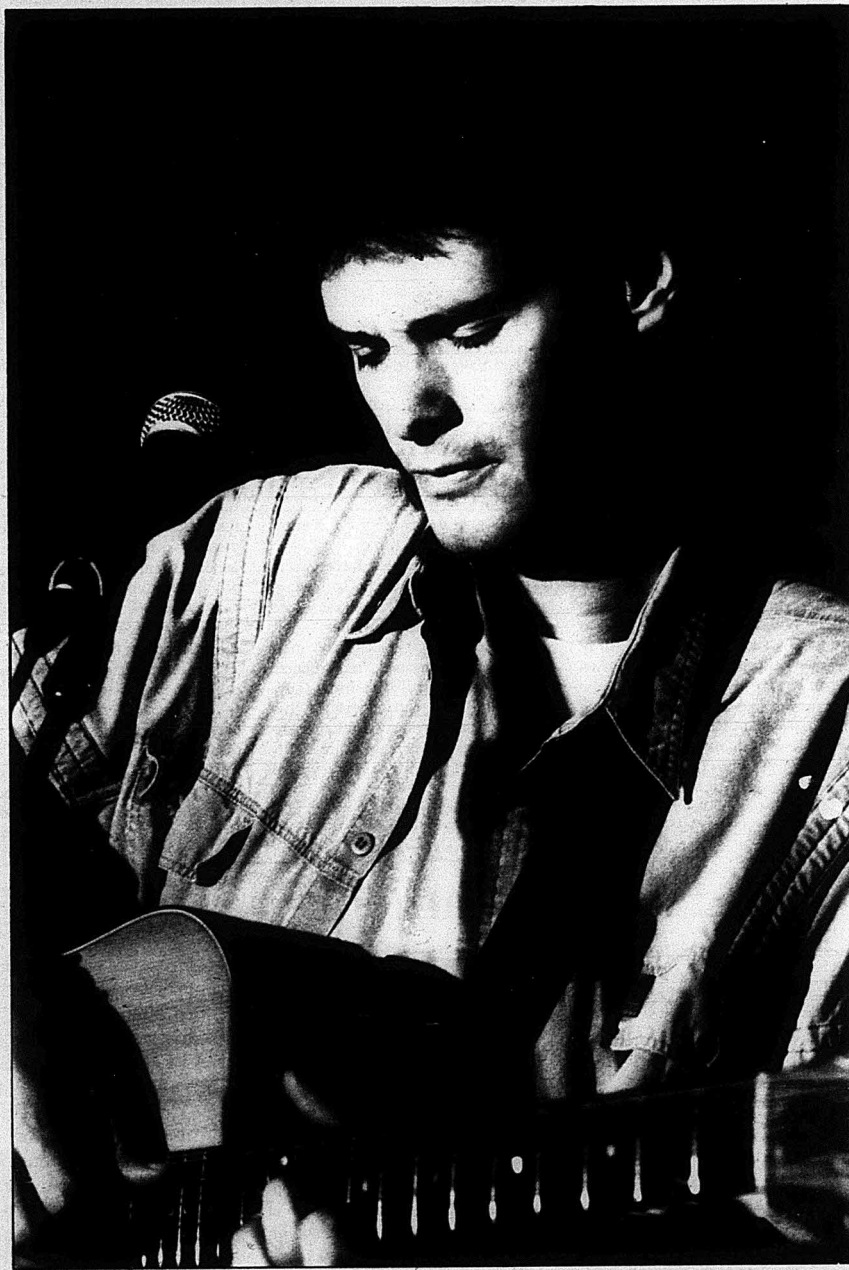
HELP THE RELIEF EFFORT FOR
HURRICANE ANDREW VICTIMS.

PLEASE DROP OFF YOUR DONATIONS IN ONE OF THE BOXES AROUND CAMPUS.

PLEASE
RECYCLE

© 1992 Teachers Insurance and Annuity Association/College Retirement Equities Fund.

CAB PRESENTS:



**M
I
K
E

R
A
Y
B
U
R
N**

FREE! TONIGHT, SEPT. 14 9:30 P.M. IN THE TERRACE

Women's cross country looks to Nationals

By Nancy Merriman
Sports Editor

Coach Dave Sobal is very optimistic about his women's cross country team this year. Sobal says, "We have five of last year's top seven back. To replace the two women we lost, we have two excellent freshmen."

Coming back from last year's team is a squad of experienced women. Maura McColgan, a senior, led the team to a third place finish in the region last year and is expected to lead the team once again. Another senior, Susan Bender, is back and is expected to again provide support in the number seven position. She is coming off of her best summer of training ever. Juniors Missie Belvin and Stephanie Baker, all-region finishers from last year, are also back.

Jennifer Freeburn returns after an excellent freshman year. She was Christopher Newport's third finisher in the region last year. Katie McColgan, who ran in 1989, is back and will definitely be an asset to the team. New this year are freshmen Tracey Marshall, Nicole Horn, and Tia Johnson. Marshall graduated from Kellum High School and attended Brevard before transferring to CNU this year. Nicole Horn comes to us from Great Bridge High School in Chesapeake and Johnson is an established member of CNU's women's basketball team.

Last year the women's cross country team finished third in the Southern Region. "I thought we had a shot at qualifying for nationals last year," explains Sobal, "but this year's

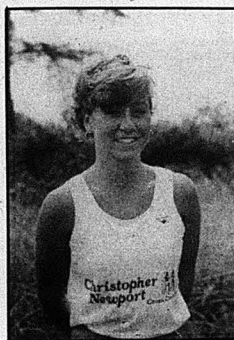


Photo by Keith Hassan
Senior Maura McColgan, expected to lead the cross country team.

team is much better so I would say we have an excellent chance." The Lady Captains missed winning the regional meet last year by only 35 points.

"The women run against larger schools during most of the season and therefore should be ready for Division III competition when the conference and region meets come around," says Coach Sobal, "I have a feeling that it's going to be a good year." The ladies opened their season on Saturday, September 12, at Old Dominion University.

"This year the men and women's cross country teams also run at home three times. Their home course is at Newport News Park next to the intersection of Jefferson and Ft. Eustis Blvd.

1992 men's cross country: young but talented with high expectations

By Nancy Merriman
Sports Editor

The men of the Christopher Newport University cross country team are very excited about this season and so is Coach Dave Sobal. All of the men, except one, are freshmen or sophomores. Robert Allen, the only junior, is a team captain along with Rich Schugeld. Both men begin the season in excellent shape and are expected to run in the top seven.

Also expected to make a showing in the top seven, are sophomores Mark Earnest, Lemuel Pearsall, Adam Rowland, and Khary Jones.

All four men are coming off a summer of excellent training.

Pearsall and Schugeld are two of last year's three all-Dixie Conference runners and Pearsall was last year's only all-Virginia state finisher.

"I feel confident in the top six," says Sobal. However, he is not so sure about who will run in the seventh spot. The contenders for this spot will be a group of four freshmen. These men are Matt Durant, Scott O'Hara, Tennibac Harvey, and Joe Seawell.

This year's team has all of last year's men back except two, but they have gained six new runners. "The

team this year is stronger than last year," explains Coach Sobal. He expects the men to place at least second in the conference this season. Last year the men placed third in the conference meet, but were a mere 10 points from second.

"We have gotten a lot better over the past two years so we should do well in the conference," reasons Sobal, "but some of the other men's teams may have done the same thing."

The men began their season in Virginia Beach at the Old Dominion University Invitational on Saturday, September 12.

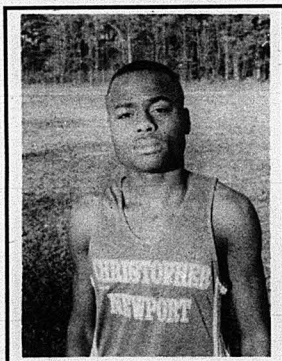


Photo by Keith Hassan
Robert Allen will provide leadership for this year's team.

CNU soccer second in tournament

By Nancy Merriman
Sports Editor

The Christopher Newport University soccer team started their season off well at the CNU Invitational held on Saturday, Sept. 5th and Monday, the 7th.

The second game was originally supposed to be played on Sunday but it was rained out.

In their opener against Frostburg State, the Captains won a close game at 1-0.

Jeff Barefoot scored the lone goal. "We played very good in this first game," says Coach Craig Reynolds.

However, on the second day of play, the men tied with Barton College in overtime play at 2-2. Jeff Barefoot and Drew Powell each contributed one goal.

The men played well the first half of the game but seemed very flat during the second half. Coach Rey-

nolds is "still looking for the answers" to this flatness.

On a lighter note, four of the CNU players were named to the tournament all-star team. They were: Jeff Meadows, Steve Downes, Jeff Barefoot, and Carey Aliff.

The men won another one point victory last Wednesday against Marymount. This time it was Carey Aliff who scored the winning goal for a 1-0 victory.

He did this in the first five minutes of the game.

The team played well the first half, and according to Coach Reynolds, "we spent the first 35 minutes on the opponent's side."

Steve Downes also provided excellent play on the defensive end. And according to Reynolds, "He did an excellent job of marking out Marymount's top player."

The second half of the game was

not so good for the Captains. "They pressed us the entire second half of the game," says Reynolds.

The score should have been 3-0 but Ian MacPherson was held once while shooting for the goal and he scored another goal at the whistle, which was not counted.

Coach Reynolds was pleased with his team's play last week but he says it was frustrating seeing his men have so many missed shot opportunities. "They created lots of chances but did not make good on any of them," he explains.

The men travelled to Bethany College in West Virginia this past weekend, September 12th and 13th, to participate in the Bethany College Tournament.

Bethany College is ranked fourth in the Southern Region and 24th in the Nation.

Intramurals

The Intramural fall sports season is upon us once again! We are looking forward to another competitive and fun filled season of great sports. We are looking for spirited teams and individuals for flag football, tennis, and co-ed aerobics. Sign up at the Intramural office, room 114 in the Rafcliffe Gymnasium. Ask for Cary Smith or Mike Stutt. The Intramural department is now hiring student officials for flag football. Call the office at 594-7054 or stop by and sign up.

Question of the Week

Is it important to vote?



VICKIE WILKERSON

If you don't vote then you don't have any right to complain about who is in office.



KENNETH BENEFIELD

It is important for people to know that whoever was elected was by the voice of the people. I think this election is kind-of hard...Do you want to get hung or do you want to go to the gas chamber?



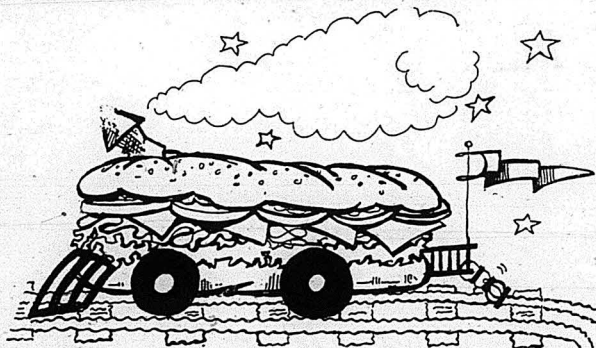
JENNIFER MCCLELLAN

Yes, because if you're going to complain about something that other people have voted for, and you haven't taken the time to vote, then you don't have the right.

WELCOME BACK SPECIAL

the
**SUBWAY
STATION**

ABC ON

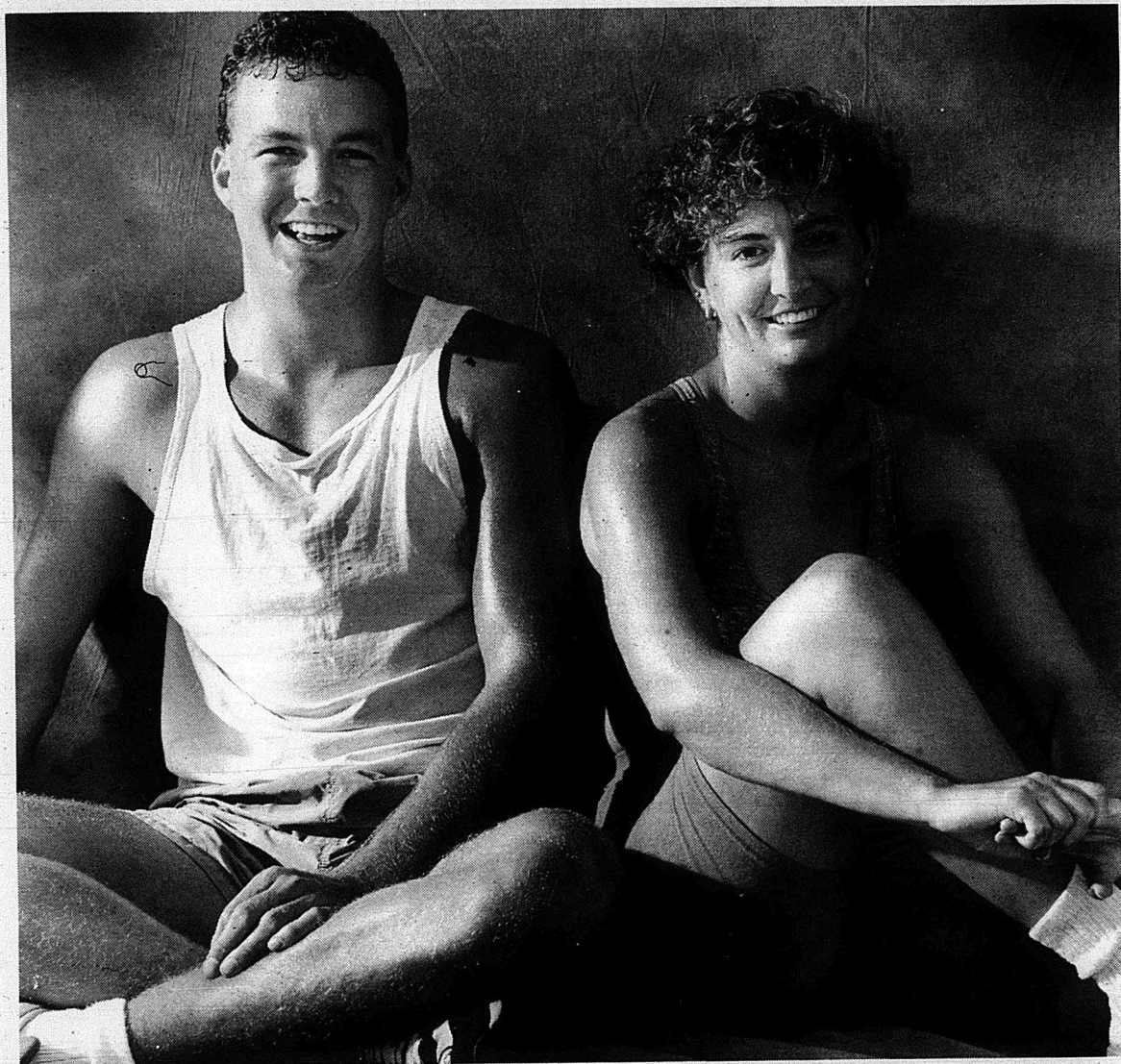


**Buy a 6 inch SUB and any size DRINK
and receive a 6 inch SUB FREE!**

Our subs are oven-baked, never microwaved!

**MUST PRESENT CNU I.D.
ONE SPECIAL PER CUSTOMER**

Located across from Ferguson High School on Warwick Blvd. 599-0167



Logically, Being In Better Physical Health Should Help You Be More Alert In Class And Able To Study Longer And Harder, But Hey, Who Cares About Logic?

You Want Facts? OK. We've got the ultrasophisticated Cybex Eagle equipment, aerobics classes seven days a week, a huge six-lane pool, Stairmasters®, Lifecycles®, free weights, treadmill, basketball, racquetball, volleyball, a whirlpool, saunas, great locker rooms and we're open from 6 a.m. until 10 p.m. Monday-Friday, 7 a.m.-8 p.m. Saturdays, and 8 a.m.-7 p.m. Sundays.

You Want a Student Discount? OK. If you're carrying at least

9 hours, initiation fee's just \$50, and we'll give you a special month-to-month contract at only \$35 per month. And, there are no restrictions on the times you can come in. It's only logical.

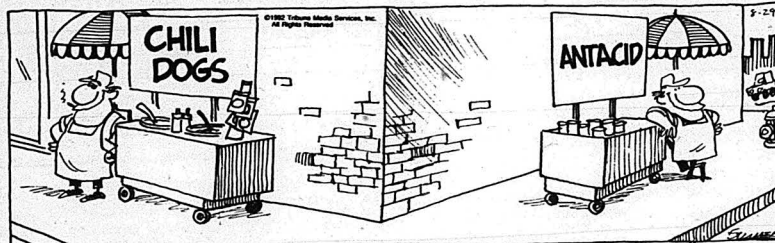
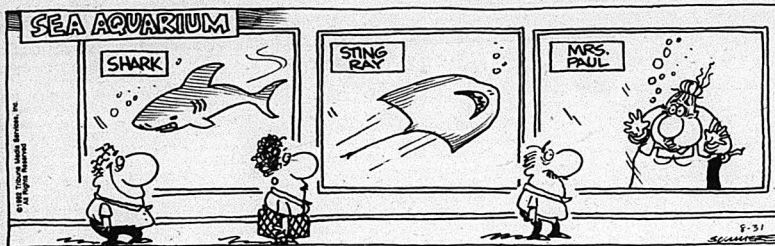


SENTARA.
Hampton Health & Fitness Center

300 Butler Farm Road, Hampton, Virginia 23666, 766-2658 or toll-free 1-800-SENTARA (1-800-736-8272)

©1991 Sentara VHA • Voluntary Hospitals of America Inc.®

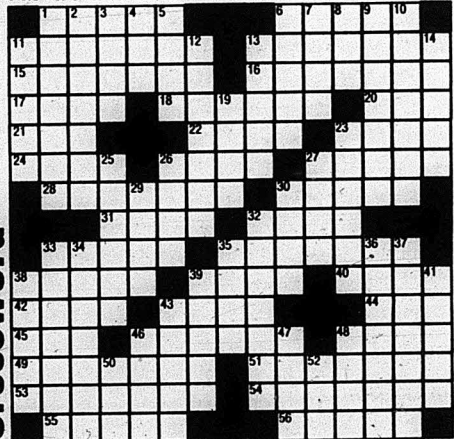
SHGH-004 (9/91) 1273/013



BOUND AND GAGGED by DANA SUMMERS



©1992 Tribune Media Services, Inc.



ACROSS

- 1 Shoreline
6 Finds fault unfairly
11 Lingered
13 Short capes
15 Cornered
16 "Arabian Nights" character
17 Nibble
18 Good luck pet
20 Guided
21 WWII command
22 Portal
23 Colleen
24 Uncommon
26 Short trip
27 Bills and coins
28 Expressing enthusiasm
30 Was sullen
31 Algerian port
32 See 27A
33 Fortification
35 Party giver
38 Glossy bird

DOWN

- 39 Dog sound
40 Criticizes severely
42 Roman poet
43 Get ahead
44 Caviar base
45 Offer
46 Very white
48 Body of water
49 Former
51 Liqueur cocktail
53 Card holdings
54 — to Betsy!
55 Go wrong
56 Cord
- 9 Nut candy
10 — up (got rid of a hangover)
11 Potato, for one
12 Expressionless face
13 Sandwich meat
14 In a melancholy way
19 Planting earth
23 Burrowing rodent
25 Worn away
26 Glance over quickly
27 Maximum
29 Land of the ayatollah
30 Face disguise
32 — hen (English fowl)
33 Gorges
34 Plain
35 Greet

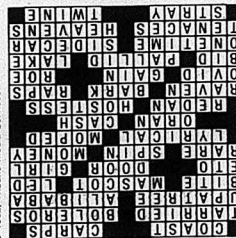
OFF THE WALL

©1992, Tribune Media Services



Crossword

Spencer Green



Solution:

Classifieds

Miss
Classified
594-7196

CLASSIFIED COPY DEADLINE (for businesses and non- college-associated persons only)

- CALL "MISS CLASSIFIED," to place your ad.
- Or come by The Captain's Log office in Room 223 of the Campus Center at Christopher Newport University, 50 Shoe Lane, Newport News.
- To NOON Thursday for following week's publication.
- Please contact Miss Classified for rates and other Classified information.
- Payment must be received before classified will be published.
- Office is closed on weekends. Leave a message for Miss Classified. A representative will contact you.
- Space is allotted on a first come, first serve basis. Ad position cannot be guaranteed by The Captain's Log.

CUSTOMER SERVICE

Please call 594-7196 on all CHANGE OF COPY OR CORRECTIONS. Deadline NOON on Tuesday preceding the week of publication.

Certain Seller Ads —For individuals only, no businesses, please. Ads listing more than one item: each item must be priced and for sale only, no rentals. Ads cannot be cancelled or changed before the first insertion. Call Miss Classified for further information and rates.

*The Captain's Log reserves the right to discontinue or amend any of our programs or offerings at any time.

MISS CLASSIFIED 594-7196
50 Shoe Lane, Newport News 23606

NOTICE—THE CAPTAIN'S LOG

For the protection of our readers, all advertisements are accepted for publication in the Classified Section on the premise that the product is properly described in the advertisement, is available at the advertised price, is available at the advertised address and will be willingly sold to a buyer at the price and conditions stated in the advertisement.

Advertisers deliberately violating these standards will not be permitted to use our advertising columns.

If the reader encounters anything other than faithful compliance with these conditions, we will appreciate your call to the Better Business Bureau, (804) 722-9101, or write BBB, 3608 Tidewater Drive, Norfolk, Virginia 23509.

NOTICE of typographical or other errors must be given before the second insertion for claims or refund

or extension cannot be recognized.

After an ad is ordered it cannot be cancelled or changed before publication. Read ad carefully at the time of first insertion. If it contains an error and you wish to correct or cancel your ad, call MISS CLASSIFIED (594-7196) and ask for CLASSIFIED CUSTOMER SERVICE DEPARTMENT.

The Captain's Log does not assume financial responsibility for losses sustained as a result of any typographical error or any ad imperfectly or incorrectly printed or accidentally omitted.

All advertising copy is accepted subject to the approval or rejection by the management of The Captain's Log, and if rejected, any consideration paid will be refunded to the advertiser, and all parties will be released. The Captain's Log also reserves the right to edit, reject or classify all ads under appropriate headings.

TAPE-A-QUARTER CLASSIFIEDS: Students, faculty, staff and members of the alumni society of Christopher Newport University. Order a classified for only .25¢ per six lines.

Announcements

Attention all History Majors: There will be a History Dept. Bar-B-Q on Friday, Sept. 25th from 11-3 p.m. Come and join the fun outside the Campus Center on the great lawn. Admission is free!

RESEARCH INFORMATION Largest Library of Information in U.S.

19,278 Topics ALL SUBJECTS Order Catalog Today with Visa/MC or COD ORDERING HOT LINE 800-351-0222 or, rush \$2.00 to: Research Information 11322 Idaho Ave. #206-A, Los Angeles, CA 90025.

AKY Bros. and interested Business Majors! Bowling Night Sept. 19, 1992 9:30 p.m., Hiddenwood Lanes.

WANTED! Enthusiastic girls interested in bringing a new sorority to CNU please contact Bobbi at 642-6534 or Emily at 877-8039.

For Sale

Used MATHCAD book and software for sale \$25 (neg.) (new \$48) Call 865-7653 ask for Nic.

83 Toyota Supra - Excellent condition, tuned and inspected. \$3400/neg. Call 723-0598 after 5 p.m. Ask for Dennis.

Jobs Available

TAKEOUT TAXI, the nation's largest multi-restaurant food delivery service, is now hiring part-time drivers for the Denbigh area. Earn up to \$8 to \$10 an hour working a flexible evening schedule. A good driving record and reliable transportation is all that is needed. For more info. call 877-7881.

* **EARN EXTRA INCOME** * Earn \$200 - \$500 weekly mailing travel brochures. For

Jobs Available

information send a stamped addressed envelope to: Travel INC., P.O. Box 2530, Miami, FL 33161

GREEKS & CLUBS - RAISE A COOL \$1000 IN JUST ONE WEEK! PLUS \$1000 FOR THE MEMBER WHO CALLS! No obligation. No cost. You also get a **FREE HEADPHONE RADIO** just for calling 1-800-932-0528, Ext. 65

Earn extra income processing mail. Send LSASE: HOLT & HIGHTOWER, P.O. Box 7060, Hampton, VA 23666.

BABYSITTER NEEDED - Please call 886-9161. Up to 15 hours per week.

Person to Person

Herks Begerks, Good gluk in all three of your classes. It's been

Person to Person

a wunderber funf. Leerv Ya's Berba

AKY Bros. - FOR THE RECORD: ROSES ARE YELLOW AND ALPHA KAPPA PSI IS B.L.U.E.! Let's make a difference! Jan

Yo, the Sociology Club is looking for members. We have some interesting speakers in the upcoming months. You know me. I need your support. Menelculas Epps

Welcome to the Threshold, initiates of Alpha Kappa Psi. Good luck.

Hey Brenda! Hope you're enjoying school, here at CNU!

Person to Person

I'm really glad you're here. See ya later! Love, Gretchen

Many people traveled "Around the U.S." but how many people traveled "Around the World" with Pi Kappa Phi!!! Peace to my brothers J.F., R.R., D.T., D.W., S.D., P.J., Mark, Tom, and Sam (Etc.)

Hey Women's Cross Country! Good luck this season! I know you're going to New York. Nancy

Men's Cross Country! I hope you have a great season! (behind the women's team) Nancy

Oh Rex when I saw you last night I couldn't believe my eyes. I can't wait to see you again. How about meeting me in the gameroom by the pinball machine on Wednesday at 12:30 and we can have a wonderful and romantic lunch together in the Terrace. I Miss You Already - Roberta

TAPE-A-QUARTER CLASSIFIEDS

Tape-A-Quarter Classifieds are for students, faculty, staff and members of the alumni society only. Simply write your ad and tape a quarter to it.

- Rates are .25¢ per ad for six(6) lines. Ads exceeding six lines will not be run.
- All ads are run in one issue only. For multiple runs call MISS CLASSIFIED (594-7196) for further information.

- Tape-A-Quarter Classifieds must be submitted on an official Tape-A-Quarter coupon. Coupons can be obtained in each issue of The Captain's Log. Ads submitted on anything other than official coupon WILL NOT be published.

- Included on the coupon must be your name, phone number and the date that ad was submitted. Failure to include such information will result in ad not being run.
- Tape-A-Quarters must be left in our convenient drop-box located on the first floor of the Campus Center next to the stairwell by the Jown W. Gaines Theatre or by mailing to: The Captain's Log, Tape-A-Quarter Classified Department, 50 Shoe Lane, Newport News, Virginia 23606. DO NOT bring Tape-A-Quarter ads to our office.

- Tape-A-Quarter ads are published on a space available basis. Those ads which are not published because of space constraints will be published in the next issue.
- The Captain's Log is not responsible for lost, misdirected or late Tape-A-Quarter ads.

DEADLINE for all Tape-A-Quarter Classifieds is NOON on Wednesday the week preceding publication. Publication dates are available upon request.

For more information about our classifieds, see the top of the Classified Section or call Miss Classified.

OFFICIAL TAPE-A-QUARTER SUBMISSION FORM

Ads which are not submitted on this form will not be published

NAME (required)

PHONE NUMBER (required)

TODAY'S DATE: / /

Check one: ☐ Student ☐ Faculty ☐ Staff ☐ Member of Alumni Society

Print Message below. Please DO NOT exceed six lines,

Quarter
here

Tape-A-Quarter ads are printed on a space available basis. Those ads which do not appear because of space constraints will be published in the following issue.