

## NEWS

### "Memory Walk"

Volunteers needed for Alzheimer's Association fundraiser.

See Story Page 10.

## SPORTS

### Cross Country

Bets on this year's team can't go wrong.

See Story Page 8.

## ARTS

### Abstract Art

"Virginia Beach Artists" showing opens in the Falk Gallery.

See Story Page 4.

# THE CAPTAIN'S LOG

VOLUME 23 NUMBER 2

CHRISTOPHER NEWPORT COLLEGE NEWPORT NEWS, VA

SEPTEMBER 12, 1991

## Sorority rush 1991 a memorable event

By Sherri Butler  
Managing Editor

With the addition of two new sororities on campus this year, rush has become even more exciting and competitive for the sisters as well as the rushees, said Terri Conway, a Gamma Phi Beta sister.

Last year there were 67 young women signed up to rush. This year there were 135 that showed interest in sorority rush according to Tisa Mason, director of student life.

All three sororities have been planning for this fall's rush for quite some time. "It's been a learning experience, a lot of fun, and much hard work. Collectively I hope it turns out to be a rewarding experience for all who participated", says Karen Young, a Phi Mu sister.

The Panhellenic Council which governs the rush activities to be sure everyone is playing fairly is headed by its President, Kathy Bradsher. Kathy agrees, "it has been a lot of hard work but sure to make the sorority system

ΓΦΒ ΖΦΒ  
RUSH '91  
ΦΜ

much stronger."

All the rushees were invited to each sorority's tea party. After that the selection process began on both sides. Each sorority had a party which followed a different theme. The final party was a preference party which helped the rushees make their final decisions. Bid day on Fri., Sept. 13

will be an exciting event for everyone. It is then that the sisters and the rushees will discover who received bids and who accepted them. These young women were forced to choose which sorority was best suited for them personally. "It's been fun, everyone was concerned with making us feel welcome and a part of things" said

Shawn Mundell, a sophomore who participated in rush. Another rushee, Tracy Williams, replied, "it was a memorable experience that helped me to decide what type of sisterhood I want to be associated with for life."

Each sorority involved seems to be excited about the fact that there are three sororities for the rushees to choose from. Johanna Grosley, president of Gamma Phi Beta states, "It's been a welcomed change having other sororities on campus. It has sparked even more enthusiasm and interest in sorority life, which is our main goal!"

Rica Hutton, president of Zeta Phi Beta commented, "considering this is Zeta's first rush we all found it to be quite overwhelming, but Gamma Phi Beta and Phi Mu were very helpful and we definitely appreciated it".

Rush is officially over on Fri., but that is not the end. An intense period known as pledging is just beginning. These young women must successfully complete their pledge period in order to become initiated into the sisterhood of their choice.

## Job outlook brightens Mid-management positions on rise

By Joyce Miller  
Contributing Writer

Students who are graduating in December and who are interested in mid-level management should have an easier job search than those that graduated last May.

According to a poll conducted by Management Recruiters International of Cleveland, the South Atlantic job market should show an increase in mid-management and professional positions for the last half of 1991.

The South Atlantic job market encompasses states along the East Coast from Maryland to Florida.

The poll included 3600 executives from around the country. The results for the South Atlantic were as follows: 29.9 percent increase in middle management and professional staff; 55.2

percent maintain current staff; and 14.9 percent reduce staff.

This represents a 3.2 point increase in projections for staff additions over the first half of 1991.

Barry B. Marsh, a representative for Management Recruiters in Newport News, commented, "All the numbers are going in the right direction for the South Atlantic region--the number of companies planning on new hires is up, and the number planning staff reductions is down."

Additionally, the region is right on track with the national average. I think we can assume that we're on the way back after hitting a low point during the first half of the year."

Students interested in obtaining a complete summary of the survey can do so, free of charge, from: Management Recruiters International, Inc., Attn: Nancy M. Kovalcheck, 1127 Euclid Avenue, Suite 1400, Cleveland, OH 44115.

## Riverside offers free prostate exams

Riverside Cancer Services and Hampton Roads Urology Clinic are offering free prostate cancer exams during Prostate Cancer Awareness Week, Sept. 22-28. In doing this, they are joining a nationwide effort to help men find out if they have the second most fatal cancer.

During Prostate Cancer Awareness Week, men may call Riverside Ask-A-Nurse at 595-6363 or 1-800-533-1852 to set up an appointment for a free prostate exam. Prostate cancer can develop and spread with no warning signs, therefore early detection is critical to successful treatment.

Last year more than 150,000 men received free exams. Among a sample of men for whom follow-up was completed, 20 percent were found to have cancer.

More than 122,000 men will be diagnosed with prostate cancer in

1991, and 32,000 will die of the disease, making it the second leading cause of cancer death among men over the age of 55. One in 11 men will get prostate cancer in his lifetime; among blacks, the ratio is one in nine.

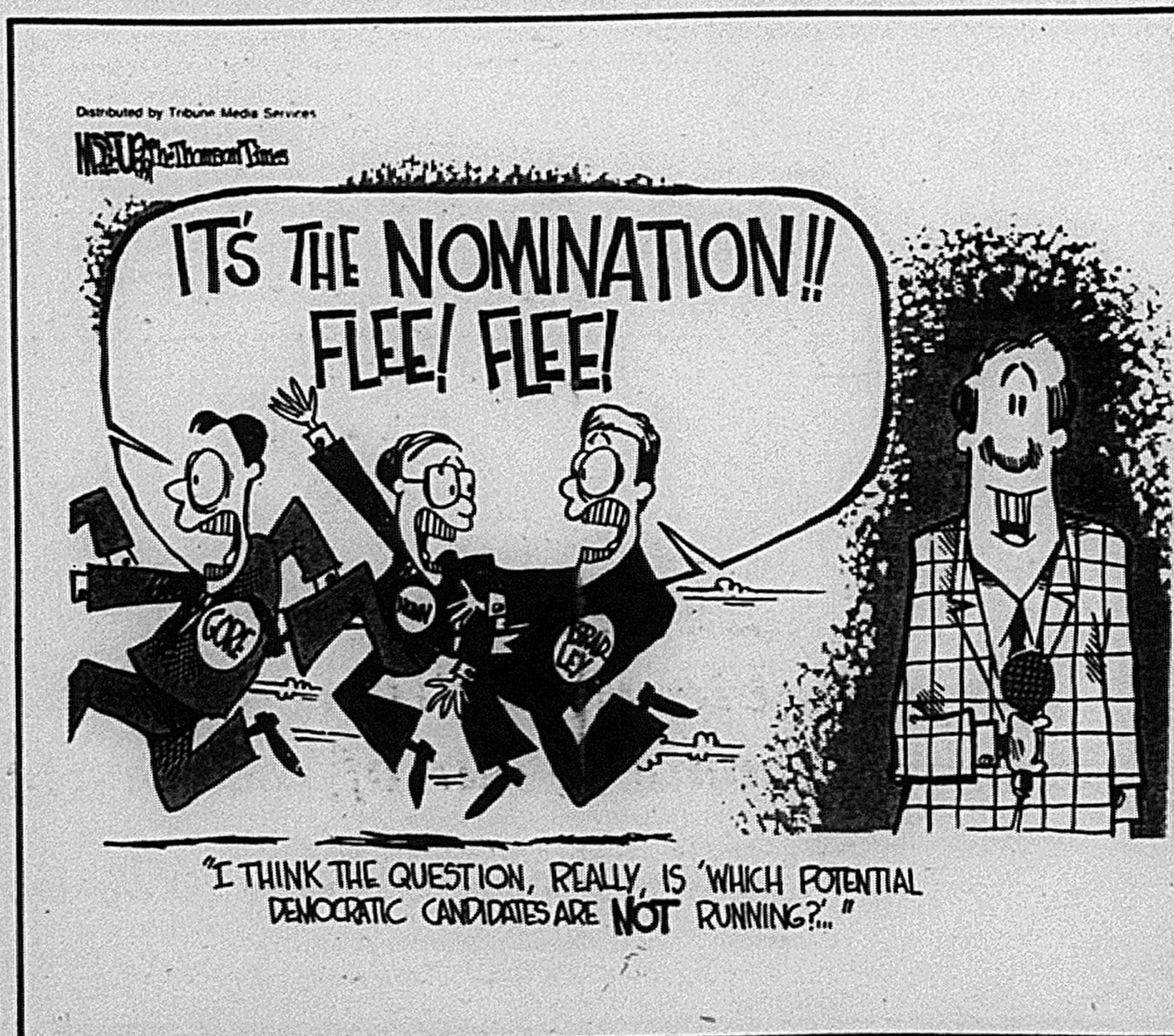
"Despite the high incidence of prostate cancer, last year's program revealed that only 25 percent of men screened had a rectal exam within the past 12 months," reported E. David Crawford, M.D., Chairman of the Prostate Cancer Education Council, sponsor of the program.

During the simple exam, which takes about one minute, a physician inserts a gloved finger into the patient's rectum and presses against the prostate, feeling for enlargements or hard lumps.

This year, many medical centers

Please see Cancer on page 5







# ATTENTION!

*Do you:*

*☞ Enjoy talking to people?*

*☞ Like fascinating stories?*

*☞ Like sports?*

*☞ Have an opinion?*

*And*

*☞ Like to write?*

*Then come by The Captain's Log office with a sample of your writing skills.*

*We need reporters for features, sports and news who are willing to work on deadlines.*

*Do you:*

*☞ Like to watch movies?*

*☞ Like to listen to music?*

*☞ Enjoy attending plays?*

*☞ Talking to celebrities?*

*And*

*☞ Like to write?*

*Then stop by The Captain's Log office with a sample of your reviewing skills.*

*We are looking for talented reporters and reviewers to interview musicians and to review movies, music and plays on a regular basis.*

## *The Captain's Log* is currently making news assignments.

*If you would like to be a part of history, are responsible and willing to work on a deadline, then come to our office located in CC 223.*

**No experience is required.**



# Falk Gallery presents "Virginia Beach Artists"

First exhibit of the season features abstract art

By Veronica Dahlberg  
Arts Editor

With autumn soon to begin, the Falk Gallery fittingly opens with a vibrant exhibit entitled "Virginia Beach Artists". It is a collection of abstract art in mixed media by 12 Virginia Beach artists which will run through Oct. 1.

Dr. Belle Pendleton, who put the exhibit together, is the new director for the gallery. She replaces Dr. Carol Calloway, who left Christopher Newport College over the summer.

Pendleton, who commutes from Richmond, taught Art History at Mary Washington College and at Virginia Commonwealth University. She also worked for The Association for the Preservation of Virginia Antiquities and taught at the Virginia Museum.

Although all of the works of art in the exhibit were created by artists from Virginia Beach, the similarities end there.

Arlene Cohen, a Virginia Beach artist with three pieces in the exhibit, says she is inspired by the Southwest and the American Indian. "It's their purity of interest in nature and the environment," she explains.

Cohen says she is interested in American Indian legends—the dolls, stories and creations. She says her work is based on science and on the culture of the past. "I love the culture of the past. I love to intermingle it

with the possibilities of the future."

Her concept was realized when one of her pieces went up in the space shuttle with the personal effects of an astronaut friend of hers.

Cohen's work is noted for its intri-

bonds to the plastic. She can also use razor blades to scrape the paint off.

"The technique is unusual enough that I've been able to do artist in residence programs at schools."

Artist Mickey Olson explains her

**"Life is a puzzle. Move it around. Change things."**

*Arlene Cohen  
Artist*

cacy, and although the exhibit features three of her smaller works, she usually works with five to six feet of space. "With the pieces in the exhibit, I incorporated using copy machines to make copies of my drawings and make them three-dimensional."

Says Cohen, "Life is a puzzle. Move it around. Change things."

Lyman Speckheuer, who has the largest piece in the exhibit, a painting entitled "Ausgestreckt" or "Stretched Out", says she uses a printmaker's approach to art. "I studied lithography in Germany for nine years and my technique is more like printmaking than painting," she says.

Speckheuer paints on Mylar, a type of plastic similar to that used to cut stencils from. "I buy it off a roll at a plastics company," she explains. "I paint flat, on sawhorses. The paint floats around because the Mylar doesn't absorb anything." She uses brushes, rollers and sponges to manipulate the paint, which eventually

approach as an intuitive one. "A lot of it is automatic but at the same time, I know where I'm going," she says.

Olson paints flat, laying the canvas on the floor. "I don't use brushes at all. I pour the paint and manipulate it by lifting the canvas," she explains. She also uses paint thinner for manipulation. "I trust my spontaneity about it," she says.

"I know why and what I paint. And I'm a painter. What I don't know is why I'm a painter."

Olson's technique is illustrated in her exhibit work entitled "The Whole Between". "I like words that invite you to ask questions about the physical form you're looking at," says Olson.

The exhibit also includes 14 book-works by sculptor Anne Iott. A book-work can be defined as a work by a visual artist that assumes the book form. Iott suggests the following definition: A book done for its own sake and not for the information it contains.



**"Grand Canyon Fantasies"** created by artist Arlene Cohen while living on Phantom Ranch at the bottom of the Grand Canyon.

Iott says materials inspire some of her books: pages made of stripped circuit boards, covers made of license plates, and toy soldier characters.

"My reactions to text, information and images found in books always suggests the approach I take to altering their structure and content," explains Iott.

One of Iott's pieces is based on "What I Want to be When I Grow Up", a book by Carol Burnett.

The exhibit will also include the works of Jon Eicher, Elizabeth Fowler, Dick Hovorka, John Stock, Elise Simon, Nadara Goodwin, and Mark Biddle.

## AN INVITATION

**WHAT:** Reception for "Virginia Beach Artists." Students and public are invited to enjoy refreshments, meet the artists and view the works on display.

**WHERE:** Falk Art Gallery, Gosnold Hall, Christopher Newport College

**WHEN:** September 15, 3:30 pm - 5:30 pm

**COST:** Free

*The Falk Art Gallery is open to the public Monday - Friday from 11:30 am - 1:30 pm*

## ART & ENTERTAINMENT

**LATINO BAND CONCERT** The Armed Forces School of Music is sponsoring the 5th Army Latino Band from Sam Houston, Texas as part of National Hispanic Week. Sept. 16 at 3 pm in the Naval Amphibious Base Theatre at Little Creek. Free. Phone (804)464-7502.

**UMOJA FESTIVAL** The city of Portsmouth is sponsoring a festival in African-American heritage. Entertainment includes live Jazz, Reggae, and Rhythm and Blues. There will be food, arts and crafts, lectures and workshops. Sept. 20 - 21. For more information call (804)393-8432. All activities are free.

**LAURIE ANDERSON** Avant-garde performance artist Laurie Anderson will present "An Informal Talk" at the Virginia Museum of

Fine Arts Theatre in Richmond. Anderson is known for combining narrative and song and creating collages of "stories, sounds and images extracted from contemporary culture." Sat., Sept. 14 at 7 pm and 9:30 pm. phone (804)367-0852 or 367-8148. Student discount.

**SEAFOOD FESTIVAL/ART SHOW** The Poquoson Art League is sponsoring its annual seafood festival and art show at Poquoson Municipal Park. The festival includes and arts and crafts show, live music, food and fireworks. Sat., Sept. 21 from 10 am to 6 pm and Sun. from 12 noon to 6 pm. phone (804)868-8410.

**HAMPTON BAY DAYS** Three days of live entertainment and activities. Downtown Hampton. Fri. through Sun., Sept. 13-15. 727-6122.



# Advertising/Marketing scholarship offered

Undergraduates at the nation's top colleges and universities will vie for a \$1,250 first prize scholarship. Second and third prizes of \$500 and \$250 respectively, will also be offered by the Point-of-Purchase Advertising Institute (POPAI) for its annual Student Marketing Competition.

POPAI's 1991 Student Marketing Competition offers sophomores, juniors and seniors at North American colleges and universities the challenge of integrating point-of-purchase (P-O-P) materials into a marketing program for a hypothetical line of baby toiletry products with "real life" marketing objectives and constraints.

"With this competition, tomorrow's business professionals can delve into

the world of marketing, and examine the critical role that point-of-purchase plays in the total marketing mix," said John M. Kawula, President of POPAI, in announcing the competition.

"Students have the opportunity to exercise their marketing talents and investigate P-O-P as a stimulating career possibility."

Each entry will be judged on a number of criteria, including meeting the stated marketing objective within given budget parameters, making significant use of in-store display activity and demonstrating originality and creativity.

Also, the presentation must be clear and concise, demonstrate an under-

standing of the P-O-P industry and use relevant marketing information for the product.

Marketing and P-O-P industry professionals will serve as judges for the competition.

All contest entries, accompanied by an official entry form, must be postmarked by Fri., Dec. 13.

One entry will be selected as Student Marketing Program-of-the-Year, and will be announced at POPAI's Annual P-O-P Industry Conference to be held March 29-April 1, 1992 at Marriott's Desert Springs, Palm Desert, CA. All entrants will be notified of the winners.

For further information, contact Ronit Bialer, Education Relations

Manager at POPAI, 66 North Van Brunt Street, Englewood, NJ 07631, (201) 894-8899.

POPAI is the only nonprofit trade association exclusively committed to serving the interests of advertisers, retailers and producers/designers involved in point-of-purchase advertising. Founded in 1936, the association helps members make point-of-purchase advertising dollars work effectively; serves as a source of timely and reliable information; provides continuing education; keeps members abreast of public policy issues; promotes the P-O-P industry through intense public relations campaigns and represents its members at national and international conferences.

## JMU offers international internships for 1992

Now that state funding has been restored, James Madison University is pleased to announce the re-opening of recruitment for January 1992 International Internship positions.

The internships are designed primarily for juniors, seniors, graduate students, and recent graduates, this program offers qualified Virginia students a unique opportunity to gain professional experience or an international basis in their field of interest.

Complete details and application materials will soon be available for approximately 50 positions in 11 countries. Packets are being sent to Place-

ment Directors, Deans, Honors Program Directors, Presidents, and Foreign Studies Directors at educational institutions throughout the Commonwealth, and all application materials may be photocopied for use by applicants.

Interested students may also request the information directly from Judy Cohen, Program Coordinator, at Paul Street House, James Madison University, Harrisonburg, VA 22807, phone (703) 568-6979 or fax (703) 568-3652.

The deadline for applications will be in early October, so would-be-interns should proceed quickly.

## AKPsi sponsors "Progressive Night"

Every Thursday, Frizbee's Sports Bar and Dance Club hosts "Progressive Night." Different progressive bands will play each week.

Throughout the month of September, the events are sponsored by Alpha Kappa Psi Fraternity.

Advance tickets can be obtained from any AKPsi brother for \$2. The cost at

the door is \$3. A pictured ID is required for admittance to the bar.

Frizbee's is located at I-64 and J. Clyde Morris Blvd. at the Ramada Inn.

Bands highlighting this month's concerts are *Janallad* (Sept. 12); *The Issue* (Sept. 19); and *Moment of Silence* (Sept. 26).

prostate cancer may be cured with therapies such as hormone therapy have been shown to extend life, control disease spread and have fewer side effects than other treatments.

Early detection is key--more than 80 percent of all patients whose tumors are diagnosed at an early stage are alive five years after treatment. Survival rates for all stages of prostate cancer have improved steadily since 1940 and have increased nearly 25 percent in the last 20 years alone.

The free screening will be held in Riverside Express Care, adjacent to Riverside Regional Medical Center on J. Clyde Morris Blvd. in Newport News, Sept. 23-27, 1-4 pm. Exams are by appointment only.

## Cancer

Continued from page 1

will offer an investigational blood test known as Prostate Specific Antigen or PSA. The test measures the blood level of PSA, a protein produced by prostate cells.

While no test is 100 percent accurate in detecting prostate cancer, a digital rectal examination (DRE) and Prostate Specific Antigen (PSA) blood test are currently the most effective way to diagnose the disease at an early stage. Ultrasound may also be used.

If detected during its early stages,

## Internships offered overseas

Christopher Newport College, in its quest to enhance its international profile and in its desire to give its students diverse opportunities in international culture is offering a student teaching program developed in cooperation with U.S. accredited overseas schools worldwide.

In recognition of the contribution of international experience to effective teaching, CNC is committed to its partnership with American Overseas Schools.

In the last three years, twenty graduates of CNC have completed student internships in Costa Rica and Mexico.

Currently there are student placements in Saudi Arabia, Frankfurt, Germany and Iceland in addition to those in Latin America.

If you are interested in participating in a teaching internship overseas, contact Dr. Sandy Bryan in the Education Department at 594-7106.

## INTERNATIONAL NOTES

### Programs expanding

The international Studies Program at CNC welcomes everyone back to school with lots of energy and enthusiasm for this fall semester.

The great things that have been happening in CNC's International Studies programs include the establishment of exchange agreements with several colleges and universities overseas.

Study and research abroad is now possible at Universidad Autonoma do Santo Domingo (Santo Domingo, Dominican Rep.) and Pontifica Universidad Catolica Madre y Maestra (Santiago de los Caballeros, Dominican Republic).

Study is also possible at Middlesex Polytechnic (London, England), Osaka International University (Osaka, Japan) and Kansai Gaidai (Osaka, Japan).

An additional exchange agreement is expected to be established with Universidad Autonoma de Guadalajara (Guadalajara, Mexico).

All of these opportunities give both faculty and students a chance to get international experiences, by study-

ing and working abroad.

If you are interested in developing any of these brand new programs, you should contact the Office of International Studies at 594-7751 (76 Moore's Lane) as soon as possible.

These are excellent opportunities to study abroad at very reasonable costs, since students pay tuition at home, and study at the overseas institution.

Students are urged to visit the International Studies Program Office as soon as possible, especially as early as their freshman year.

Dr. Hansen, director of the program, will help students explore international opportunities at CNC.

Students will also be shown how to organize their courses and finances so they can plan effectively for overseas study.

Please fill out a Survey of International Skills, Resources and Interests, available at the Information desk at the Campus Center, in order to aid the International Studies Program to plan ahead for the future programs.



## Of four-year state colleges: Crime rate lowest at CNC

Christopher Newport College has had the lowest crime rate among Virginia's four-year state colleges and universities, since 1988, according to a report by the Virginia State Police.

"Our campus police officers, under the direction of Chief (Gerald J.) Bright, have done an outstanding job protecting the people and facilities of Christopher Newport College," said CNC President Anthony R. Santoro.

"Their hard work and dedication have gone a long way in making CNC the safest four-year state college in Virginia."

CNC reported 30 crimes in 1990, 29 larcenies and one burglary. Of the 3,953 crimes reported at the 13 state colleges and universities, crimes reported at CNC only represent eight-tenths of one percent.

Chief Bright said, "While our officers are well-trained and highly visible, much of our success can be attributed to the full support we receive from the students, faculty and staff. Their willingness to take an active role in our crime prevention effort has played an important part in the program's success."

### Ask the President

*The Captain's Log* is currently accepting questions for President Anthony Santoro. Questions should be worded in a manner to allow for a brief response due to space limitations. Send questions to *The Captain's Log*, Ask the President, 50 Shoe Lane, Newport News, VA 23606, or put them in *The Captain's Log* multi-purpose box located at the stairwell by the John W. Gaines Theatre in the Campus Center.

## CAREER CORNER

### Many services available

Most college students face career and personal issues at some time during their college experience.

Issues include college and social adjustment, family conflicts, choice of major, career and employment confusion, anxiety and time management, and many others.

The Office of Career and Counseling Services (OCCS) offers a comprehensive array of services to assist you in these areas.

The following overview provides a brief look at OCCS programs and services. In future articles will highlight each service and provide more detail about each.

The goal, of these articles, is to make you aware and pique your interest.

**Counseling** - Counseling is available to assist you in dealing with personal and career issues.

**Computer Assisted Career Guidance** - SIGI Plus can help you identify interests, values and career ideas.

**Career Resource Center (CRC)** - The CRC is a centralized resource for career, graduate school, and employer information.

**Student Employment Program** - If you are thinking about working part-time at CNC, this program may be a resource for you.

**Job LINK Program** - Come by and review a list of job opportunities called in by local employers.

**Job Opportunity Boards and Job Banks** - Over forty-five lists and two

comprehensive job banks are available for you.

**Seminar Series** - We will be posting a list of seminars available to you this semester covering a variety of career, employment and counseling topics.

**Video Tape Series** - Through a cooperative effort with the Media Center in the library, we offer video tapes on numerous career and employment topics. Take a look!

**Mock Interviewing Program** - We can stage, tape and critique a practice job interview with you. What a great way to learn!

**On-Campus Recruitment Program** - Seniors, our recruiting schedule will be posted Sept. 19. Start early and learn about program guidelines and procedures.

**Job Seeking Skills Development Program** - Learn how to market and place yourself in a tight job market. We can teach you how to tap the hidden job market where most jobs are found.

As you can see, there is a comprehensive array of services offered. Should you have any questions about these or other services, please call 594-7047 or visit our office in Campus Center, Room 146.

Please look for future articles as services, career and counseling issues will be explored.

*Douglas C. Gallaer is the Director of the Office of Career and Counseling Services.*

## Survey returns to newspaper

In trying to discover more about the community of Christopher Newport College, *The Captain's Log* began running surveys last fall.

"The whole idea behind the surveys was to find out what people thought about a variety of subjects, but it didn't work out that way," said Tom Gibson, 90-91 editor of the student newspaper.

For the first survey, one on religion, the newspaper office received only fifteen replies. "There were some great responses, but just not enough of them to give an accurate percentage of who believed what," said Gibson.

Of the responses that were received, eight said they were Christians, four said they were atheists, and there was one reply for agnostic, Wiccan and non-conformist.

The second, and last, survey received only four responses.

"We would like to see more people respond, to get involved," said Teresa Adams, editor for 91-92.

"We are going to bring (the survey) back, and I hope that students, faculty and staff take some time to respond," said Adams.

The newspaper will run surveys several times throughout the year.

## THE CAPTAIN'S LOG SURVEY

### RELIGION AND BELIEFS

#### 1. What do you consider yourself?

- ☐ Agnostic    ☐ Atheist    ☐ Buddhist  
☐ Christian    ☐ Jew    ☐ Catholic  
☐ Other \_\_\_\_\_

#### 2. Are your beliefs those of your parents?

- ☐ Yes    ☐ No

#### 3. Have you studied other beliefs?

- ☐ Yes    ☐ No

#### 4. If you answered yes to question 4, please state why you studied these other beliefs.

---

---

---

---

#### 5. Have your beliefs been imprinted on you from the time you were a child?

- ☐ Yes    ☐ No

#### 6. Do you feel that all religions have a place in our society?

- ☐ Yes    ☐ No  
☐ All except . . . \_\_\_\_\_

#### 7. Do your beliefs interfere with relationships?

- ☐ Yes    ☐ No    ☐ Sometimes

### PERSONAL INFO

Sex: ☐ Male    ☐ Female

Age: ☐ 18-25    ☐ 26-35    ☐ Over 35

Drop off this completed form to *The Captain's Log* office, room 223 in the Campus Center. Or put it in *The Captain's Log* multi-purpose drop-box located by the stairwell at the Gaines Theatre entrance.



## CNC home to many overseas travellers

Cuba, Kuwait, Nigeria, Hawaii, Egypt, Japan and Mexico highlight passports

Welcome back to all our international travelers for this past summer! It was a busy time for many of the CNC faculty and students.

Some of the people that travelled overseas are now sharing their experiences with us.

Dr. Clyde Brockett, professor of music, traveled to Cuba for 12 days during the month of June. Brockett was studying the life and work of L.M. Gottschalk.

Professor Lea Pellet from the sociology department and students Sharnia Smith, Jose Alvarez and Martha Fernandez toured villages in southern Mexico and Guatemala.

Their trip was part of a field research project on migrant workers.

Dr. Elizabeth Hansen, director of International Studies Program voyaged through Egypt, Qatar, Kuwait and the United Arab Emirates as a Malone Fellow. Hansen was on a fact finding trip.

Hansen's trip was not all work and no play. She took time out to have her picture taken in Egypt in the country's native dress (right).

Juliana Jackson joined Professors Robert Durel and Lea Pellett in their journey to Nigeria.

Dr. Durel served as an academic specialist in the graduate program, lectured in the faculty seminar on Sociological theory and also did some teaching.

Drs. E. Boyd, J. Fieser and R. Durel spent some time in Hawaii. The three were attending the AASCU Summer Institute on "Infusion of Asian Studies in the Curriculum." The Institute was sponsored by the East-West Center.

Cheryl Vincent and Tarsha Thompson spent a month in Japan. The summer program which they attended



Proving that professors aren't always as uptight as students believe them to be, Dr. Elizabeth Hansen makes time for fun during her recent trip to Egypt.

was held at Osaka International University. While there, they studied the Japanese language and culture.

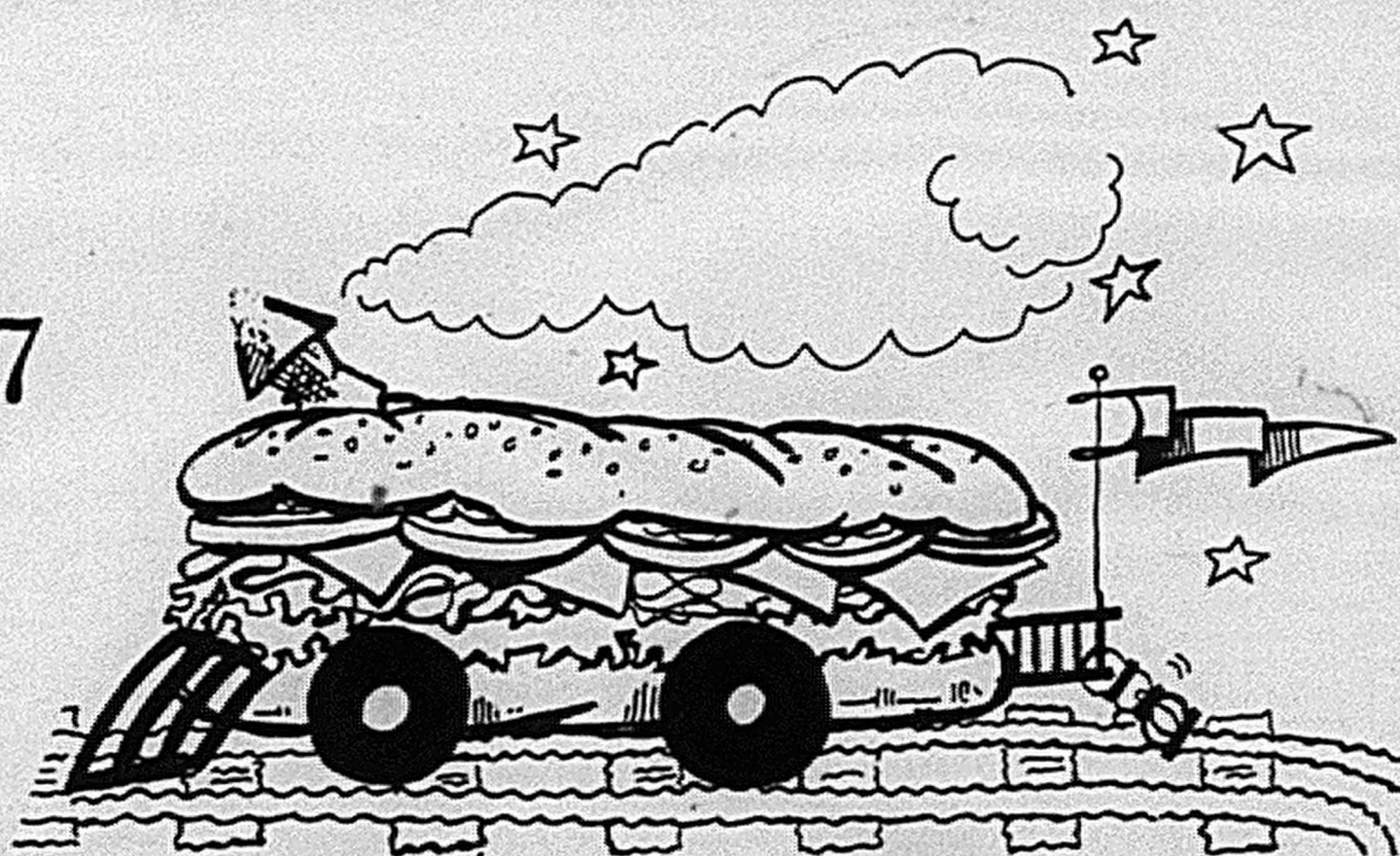
If you are reading this, then you know that advertising in *The Captain's Log* works! Call 594-7196 to place your ad today.

## WELCOME BACK CNC STUDENTS

*the*  
**SUBWAY  
STATION**

599-0167

*"Our subs are SUB-PERBLY delicious!"*



Show your CNC Student ID and receive an  
**ICE COLD BEVERAGE for 25¢ and/or  
75¢ off any 12" SUB**

**ONLY AT THE SUBWAY STATION**

*Located across from Ferguson High School on Warwick Blvd.*

THE CAPTAIN'S LOG CLASSIFIEDS are a great way to get business for your business  
Call Miss Classified at 594-7196



# Place your bets on CNC cross country

By Robby Hipps  
Sports Editor

By hosting the NCAA Division III national championships this year, hopefully spectators will get a chance to see some of the CNC cross country team in the highest field of competition for their sport at this level.

According to assistant coach Dave Sobal the odds of this happening are great.

Strong off season conditioning, excellent talent, and an optimistic outlook should make Sobal hit the jackpot.

Perhaps the safest bet of all could be placed on one of the numerous talented women runners, but a bet on one of the men could not go wrong.

On the men's side the only thing that could hold them back from the nationals is a lack of runners with collegiate level experience.

"We only have three non-freshman runners on the team this year," stated Sobal. Those individuals are Jerome Valree, Robert Allen, and Gene Shum.

Valree, a senior, will be one of the top runners on the team even though

he has only two years of cross country experience.

Although he is still relatively unknown, Sobal feels that he will burst onto the scene. Valree was an All-American in the 800 meters for the track team, so he has proven he can run with the best of them. In addition, he underwent an extensive summer training program which brought him into this season in excellent shape.

Sophomore Robert Allen has been a pleasant surprise for Sobal this season. According to Sobal, "he is in the best shape of his life thanks to summer training." Furthermore, he will be taking more of a leadership role which will be important with such an inexperienced team.

Shum, from Bronx, NY, the last returning runner from last year's squad, has also come into the season in good shape.

However, a late summer ankle injury may prevent him from showing as well as he would like.

The rest of the entire team consists of "rookies". But these youngsters include two runners, Rich Shugeld and Lemuel Pearsall, both of whom

were state level competitors in cross country in high school.

"Unequivocally the best team this school has ever had," is the term Sobal used to describe this year's women's team. In the past the teams had several good runners, but this year the team is very good overall with a lot of experience.

Additionally, seven out of eight women trained consistently in the summer. Stated Sobal, "People were willing to put in the time in the summer, which is essential; it has to be your lifestyle."

Key members on this year's squad include sophomore Stephanie Baker, junior Maura McColgan, junior Susan Bender, and sophomore Missie Belvin.

Baker, who broke the school record for 5000 meters, is expected to only do good things. McColgan was All South-Southeast Region in 1989, but she was unable to run last year.

This will be Bender's third straight season, and she has been very dedicated on improving from year to year. Finally, Belvin has been a pleasant surprise for Sobal because of the excellent shape she has come into the

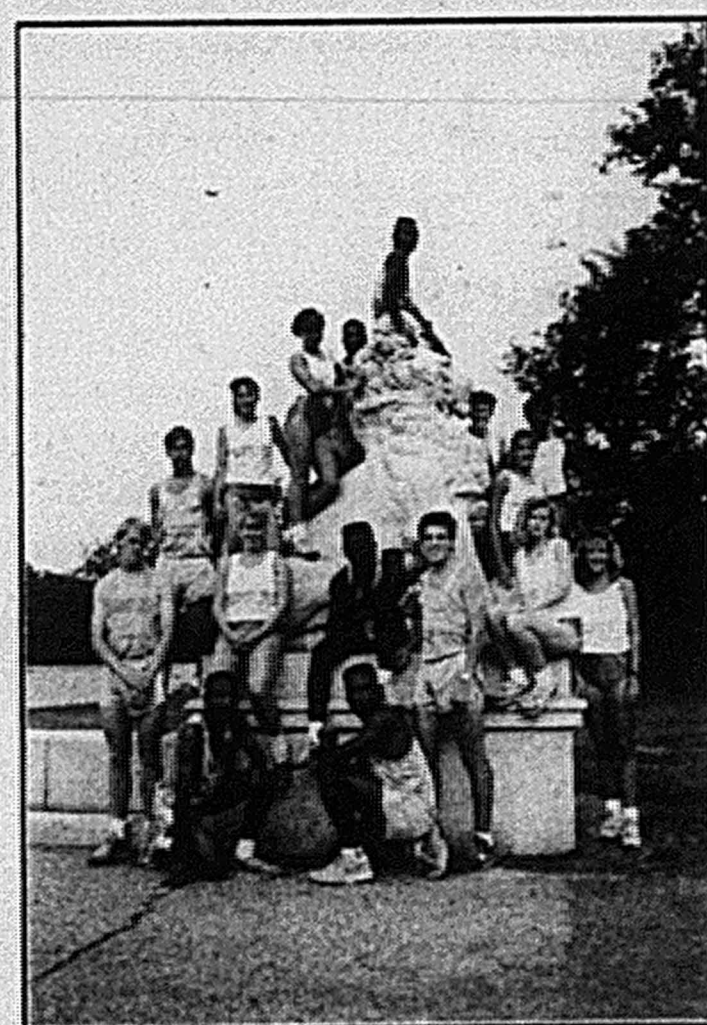


Photo by Keith Hassan

**CNC cross country team hopes to qualify for the national meet which CNC will be hosting later in the year.**

year at.

Even if you are not a betting person, don't count this year's teams out because they might pull an upset.

## Intramurals has a lot to offer

By Michael Andress  
Director of Intramurals

It is 10:30am and you have an hour before your next class. You've prepared yourself for the quiz and feel that if you study anymore you will forget the material. The worst thing is that you have nothing to do...you want to relax. I have an idea! You better listen I don't have them often.

Why not come by the Intramural Office, located in Ratcliffe Gymnasium rm. 114, and check out some sporting equipment?

At least come by to say Hi and see what we have to offer your "athletic

Sports Hall of Shame by Nash & Zullo

appetite."

The Intramural department has footballs, basketballs, softballs, softball gloves, soccerballs, tennis rackets, tennis balls, volleyball set and rubber balls.

Also available are flag football equipment, team pennies, scoreboards, bases, volleyballs, softball bats, kicking tees, yard markers, lanterns, and stoves. We ask that you remember to bring your student I. D. with you as we cannot check out any equipment without it.

Our office hours are 9 am - 3pm on Mon., Wed. and Fri; 9 am - 3 pm and 4:30 pm - 5:40 pm on Tues. and Thurs.

## New sailing coach ready for season

By Christine Wallio  
Contributing Writer

When Dan Winters thinks back to the first regatta he sailed in he shakes his head and laughs.

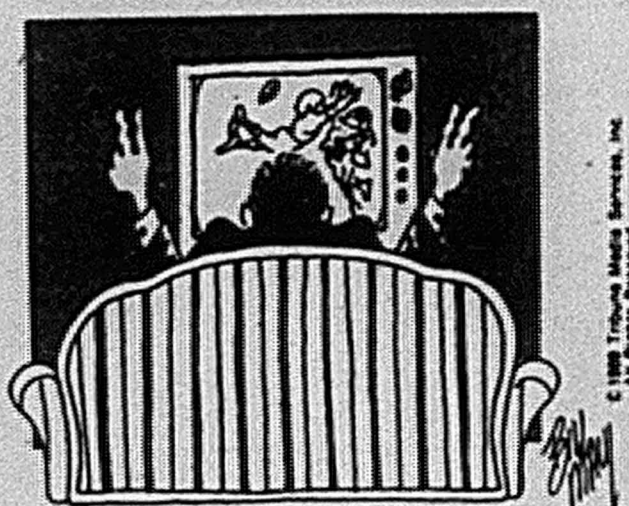
"It was a big mistake because I won it and then I had the attitude that I would win every race," says the new coach for the CNC Sailing Team.

However, it has been thirty-three years since that first regatta and Dan Winters is still going strong. Along with being the new coach at CNC this fall, he is also owner of a sail loft in Downtown Hampton, thereby making a sound combination of the two sailing interests.

"There are so many opportunities for young people to sail," says Winters. He adds that even though the size of the team is small now, CNC can offer a program to develop in and one that has more time and effort placed on the individual sailor than at larger schools.

Winters says that some of the key members this fall include teams of John Farrar with Susan Hoskins, Douglas Gambel with Leigh Rice, and Jason Smoker with Kennon Burdwell.

The potential of CNC's Sailing Team tests its skill this fall when it competes with such schools as ODU, Navy, St. Mary's College, Yale, and MIT. Good luck to the team and to its new coach!



HOW COULD THE MIAMI DOLPHINS BEAT THE DALLAS COWBOYS IN SUPER BOWL VI IN 1971? THEN-PRESIDENT RICHARD M. NIXON PHONED COACH DON SHULA WITH THE ANSWER: SEND MIAMI'S PAUL WARFIELD ON SOME DOWN-AND-IN PASS PATTERNS. FOUR TIMES THE DOLPHINS TRIED THE PLAYS AND FAILED. MIAMI GOT CREAMED 24-3.

## INTRAMURAL TENNIS TOURNAMENT & FLAG FOOTBALL

Sign-up now through Sept. 18  
Intramural Department-Ratcliffe Gym



# Soccer team opens season 2-0

The Captains began the season on a positive note by capturing two victories in their own CNC/Comfort Inn Soccer Classic, but Virginia Wesleyan took the tournament title on the basis of goal differential.

On Saturday, the "Young Guns" downed Marymount, 3-0, to win the opening game for the eighth time in the last nine years.

The combination of junior Dusty Scott and sophomore Charlie Sneddon provided the scoring attack with Scott scoring twice and Sneddon once. In addition, CNC dominated the shooting, 20-2.

In the goal, junior Mark Murypicked up the shutout in his first game in a CNC uniform.

Junior Jeff Barefoot scored the game's only actual goal in a 1-0 win over Maryland-Eastern Shore. His goal was the only actual one because the other two CNC first half scores were nullified because of offsides.

Both offsides calls were very close

and questionable. Nonetheless, the Captains only needed one goal as junior netsman Paul Bleier grabbed another shutout in his first game for CNC also.

Once again the "Young Guns" outshot the opposing Hawks, 20-6.

Virginia Wesleyan, which defeated Maryland-Eastern Shore, 6-1, and Marymount, 7-0, won the tournament on the basis of goal differential.

The Marlins' Olivier Lurz was voted Offensive MVP, while Maryland-Eastern Shore goalkeeper Charles Taylor, was the Defensive MVP.

This week CNC hosts Hampden-Sydney on Wednesday at 4pm. The Captains hold a 6-4-2 series advantage over the Tigers with wins in 1988 and 1989. The two did not face each other last year.

Over the weekend CNC plays in the Virginia Wesleyan Tournament. Saturday the Captains meet Western Maryland, for the first time ever, at 4pm.

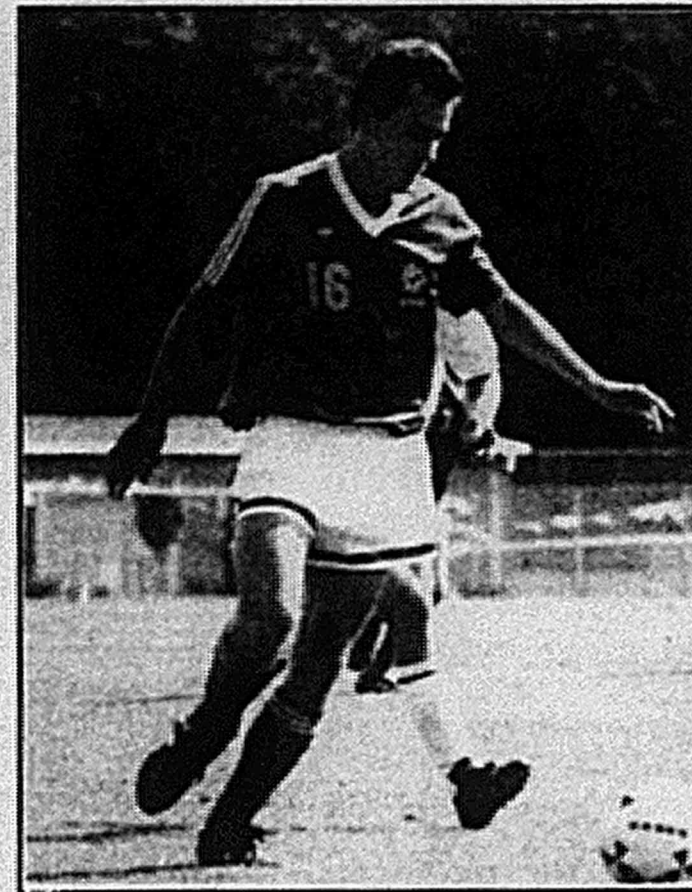


Photo by Keith Hassan  
Charlie Sneddon advances the ball upfield in CNC's 1-0 victory over Maryland-Eastern Shore.

On Sunday CNC faces St. Mary's at 1pm. CNC leads that series, 3-1, including a 7-0 win in 1989.

## RUGBY

**CNC  
vs.  
UNIVERSITY  
OF  
RICHMOND**

**SAT., SEPT. 14  
1 pm**

**RIVERSIDE  
FIELD**

# PAID POSITIONS AVAILABLE

for

# PHOTOGRAPHY EDITOR

&

# ADVERTISING MANAGER

*Volunteer photographers and writers  
are also needed*

*Come by our office in CC 208 or call for info at 594-7159*

TAPE-A-QUARTER CLASSIFIEDS are the perfect way to get the message across!  
Quick! Fill out the coupon on the back page.



## Q & A

**Q** I remember reading something a while back about something that allows parents to detect drug use by their teenagers. Was this real or what?

**A** Yes, it is real. For \$49.95, parents can purchase a set of aerosol sprays called *Drug Alert*, which can detect traces of drugs ranging from crack to PCP to marijuana. If drug traces are present, a color appears for each type of drug. *Drug Alert* is marketed by SherTest Corp. of Yonkers, New York.

**Q** Last year, I filled out a survey on religious beliefs which was printed in *The Captain's Log*. I don't remember ever seeing the results of that survey. Were they ever published?

**A** No, the results were never published. We did not receive a very large response to the survey. Therefore, we are running the survey again. Please see the article on page 6 for further information.

**Q** I am giving a party, which will be attended by several people who are under the age of 21. I would like to serve some tasty mixed drinks, but I don't know of any which are non-alcoholic. Can you make some suggestions?

**A** According to *Mr. Boston Official Bartender's Guide*, there are several delicious drinks which can be made without alcohol.

**Beach Blanket Bingo**—Ingredients: 3 oz. Cranberry Juice, 3 oz. Varietal Grape Juice (Chenin Blanc, etc.). Pour ingredients over ice in a highball glass. Top with club soda and garnish with lime wedge.

**Fruit Smoothie**—Ingredients: 8 oz. Chilled Orange Juice, 1 Banana, Peeled and Sliced, 1/2 cup Ripe Strawberries, Blueberries or Raspberries. Combine Ingredients in electric blender. Blend at low speed. Pour in a highball glass and garnish with assorted fruits.

**Innocent Passion**—Ingredients: 4 oz. Passion Fruit Juice, 1 dash Cranberry Juice, 1 dash Lemon Juice, Club Soda. Combine juices in a highball glass filled with ice. Top with club soda, stir. Add a cherry and a long straw.

*We found several others, but because of space limitations, we are not able to print the entire list. Please consult the book for further ideas.*

**If you have a question for "Q&A," let us know. We will do our best to find the answer and report to you in a future issue. Address your questions to "Q&A" and place them in our drop box. Please include your name and class status or department. If you wish to have your name withheld, we will be glad to protect your anonymity.**

## "Memory Walk" for Alzheimer's

By Pamela Lynch  
News Editor

The fourth leading cause of death in adults is Alzheimer's disease.

The disease affects four million Americans and is a disease in which the brain slowly deteriorates.

In time the patient comes to completely depend on others for their care.

It is important to know and

understand that Alzheimer's is a disease that affects the mind.

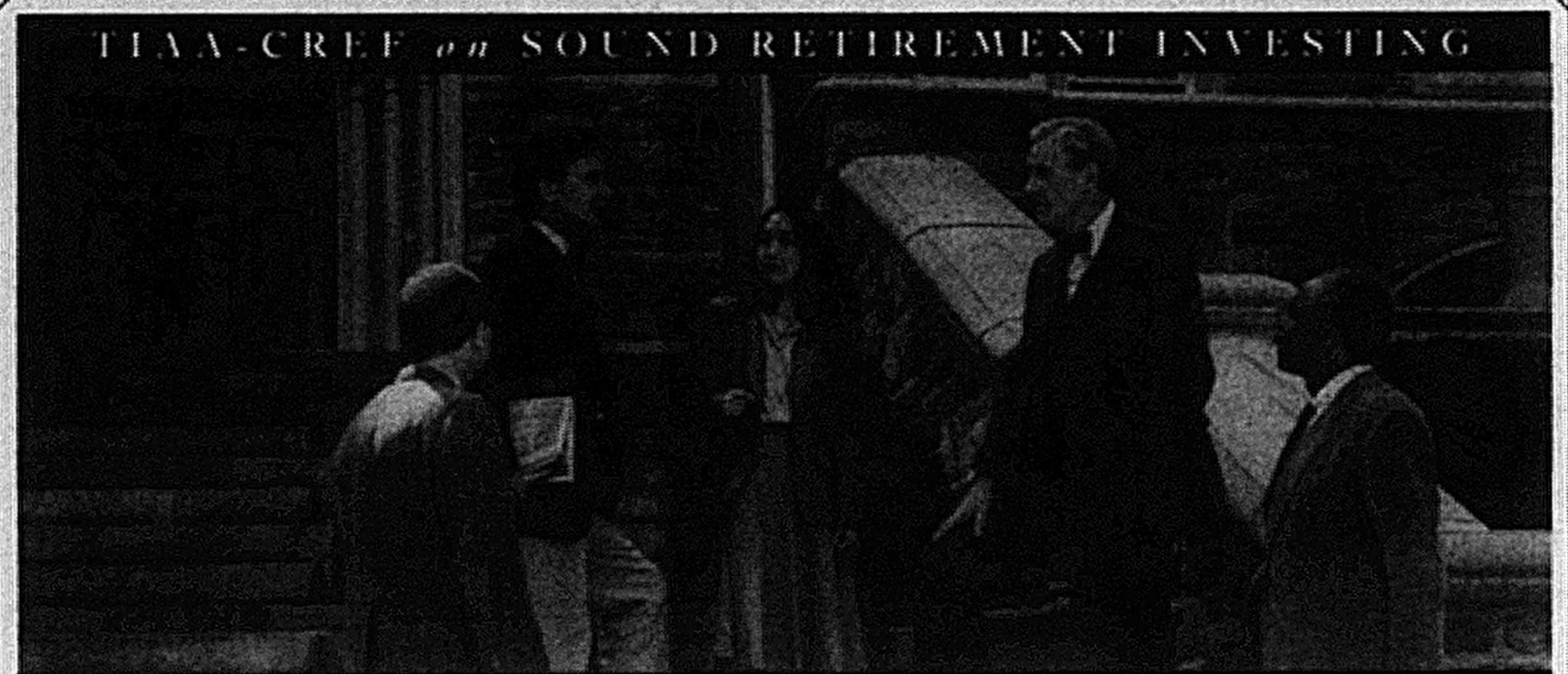
The disease takes over a patient's life. It controls the way that person acts.

Patience is important when someone you love has Alzheimer's.

Care for Alzheimer's patients is extremely expensive. Money is needed to help families pay for the special needs of the ill-

ness. In order to raise money for research, education, and financial relief, volunteers are needed for Alzheimer's Association, Hampton Roads Chapter, Memory Walk.

The walk will take place on Sept. 14, 9 am at Fort Monroe in Hampton. For more information, please contact The Alzheimer's Association at either 1-800-755-1129 or 459-2405.



## ONE MILLION OF THE BEST MINDS IN AMERICA HAVE ALREADY CHOSEN THE BEST RETIREMENT PROGRAM.

**T**IAA-CREF is building a sound financial future for more than 1,000,000 people in the education and research communities. And over 200,000 retirees are now enjoying the benefits of their TIAA-CREF annuities.

### LOOK FOR SECURITY, GROWTH AND DIVERSITY.

Security—so the resources are there when it is time to retire. Growth—so you'll have enough income for the kind of retirement you want. And diversity—to help protect you against market volatility and to let you benefit from several types of investments.

### HERE'S WHAT YOU GET FROM TIAA-CREF.

TIAA offers you the safety of a traditional annuity that guarantees your principal plus a specified rate of interest, and provides for additional growth through dividends. For its stability, sound investments, and overall financial strength, TIAA has received the highest possible ratings from all three of the insurance industry's leading independent agencies.\*



Ensuring the future for those who shape it.™

CREF's variable annuity offers opportunities for growth with four different investment accounts, each managed with the long-term perspective essential to sound retirement planning.

### EXPERIENCE. PERFORMANCE. STRENGTH.

Your future is protected by the largest private retirement system in the nation. Since 1918, we have been helping build a secure future for people in education and research. We have done so well, for so many, for so long that we currently manage over \$95 billion in assets.

**SEND NOW FOR A FREE RETIREMENT INVESTMENT KIT,** including a *Special Report* on TIAA investments. Mail this coupon to: TIAA-CREF, Dept. QC, 730 Third Avenue, New York, NY 10017. Or call 1 800-842-2733, Ext. 8016.

Name (Please print) \_\_\_\_\_  
Address \_\_\_\_\_  
City \_\_\_\_\_ State \_\_\_\_\_ Zip Code \_\_\_\_\_  
Institution (Full name) \_\_\_\_\_  
Title \_\_\_\_\_ Daytime Phone ( ) \_\_\_\_\_  
TIAA-CREF Participant ☐ Yes ☐ No If yes, Social Security # \_\_\_\_\_

\*A.M. Best Co. = A+ (Superior); Moody's Investors Service = Aaa; Standard & Poor's = AAA.

© 1991 Teachers Insurance and Annuity Association College Retirement Equities Fund.

CN



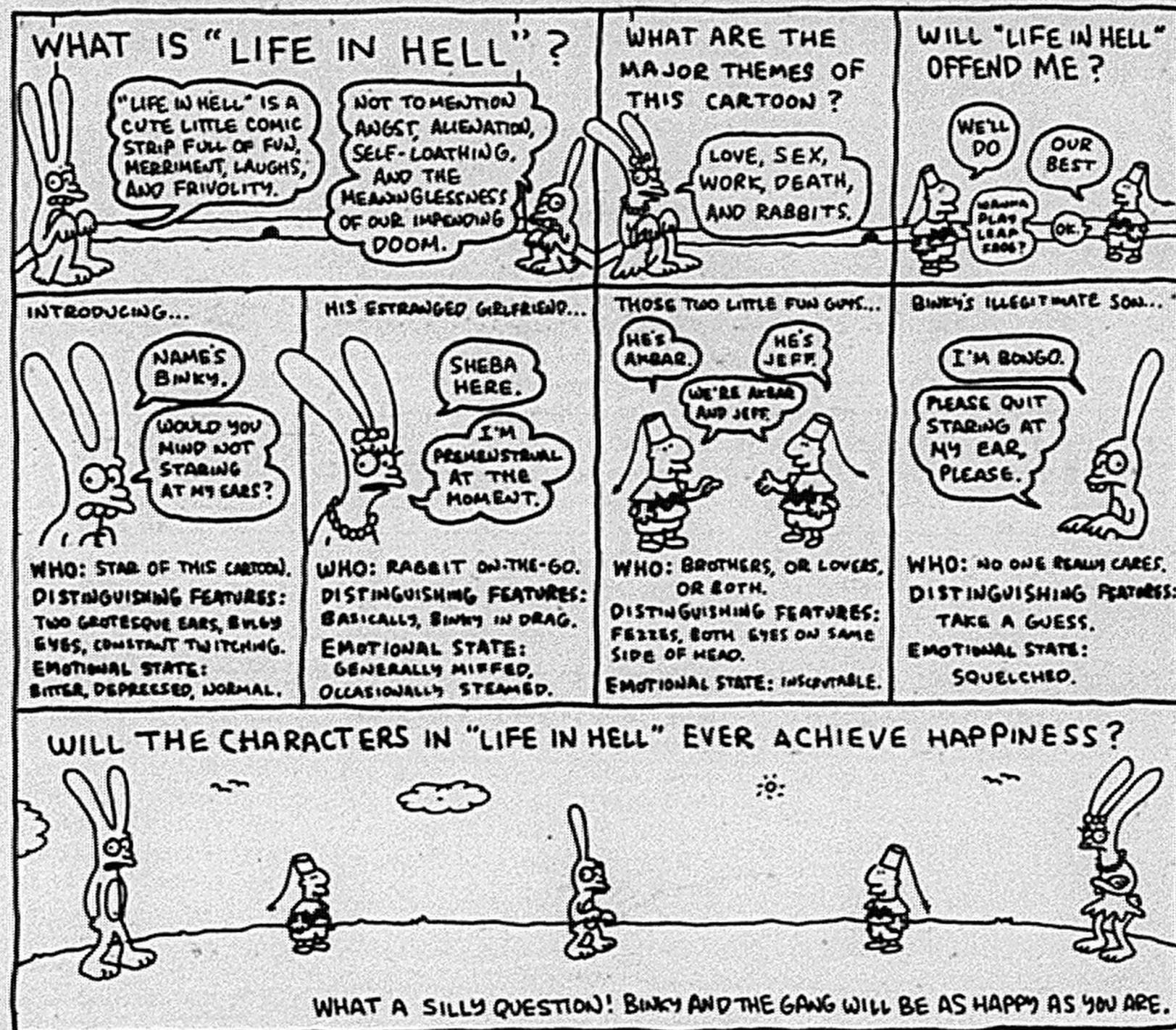
## LIFE IN HELL

MATT GROENING

## HELL FOR BEGINNERS

A BRIEF INTRODUCTION TO THIS CARTOON FOR NEOPHYTES AND A REMEDIAL COURSE FOR THOSE WHO HAVEN'T BEEN PAYING ATTENTION

© 1986



## ACROSS

1 Recede  
4 Small fish  
9 Chart  
12 Falsehood  
13 Choir voice  
14 Be in debt  
15 Old World lizard  
17 Visionary  
19 Heavy volume  
21 Spike of corn  
22 Uneasy  
25 Narrates  
29 Babylonian  
30 Part of fishing line  
32 Chimney carbon  
33 Time gone by  
35 Zodiac sign  
37 New Deal agency; init.

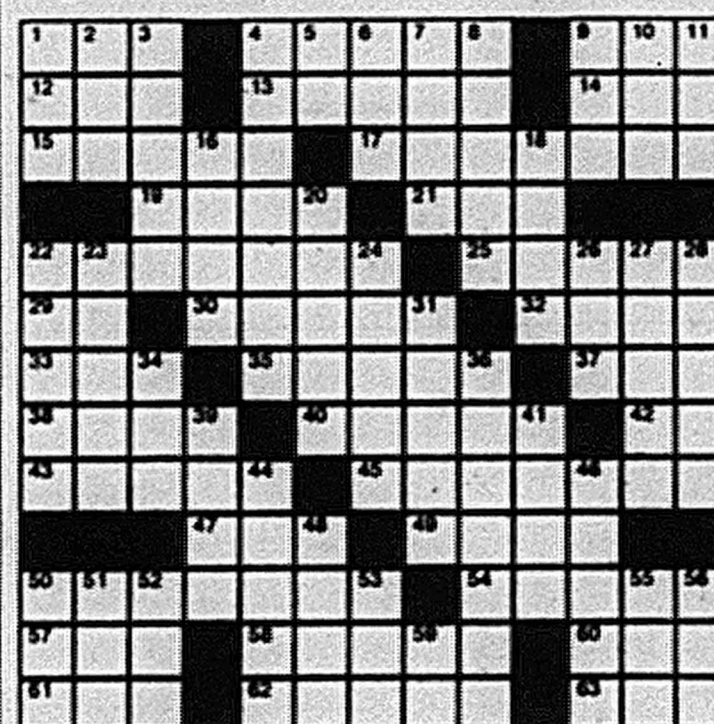
38 Real estate map  
40 Domesticates  
42 Latin conjunction  
43 Surgical thread  
45 Conjecture  
47 Tennis stroke  
49 Disturbance  
50 Scores  
54 Semi-precious stone  
57 The self  
58 Quiet  
60 Meadow  
61 Recent  
62 Facilitates  
63 Still

## DOWN

1 Guido's high note  
2 Large  
3 Whips

4 Vigor  
5 Coroner; abbr.  
6 Finish  
7 Learning  
8 Handle

The  
Weekly  
Crossword  
Puzzle

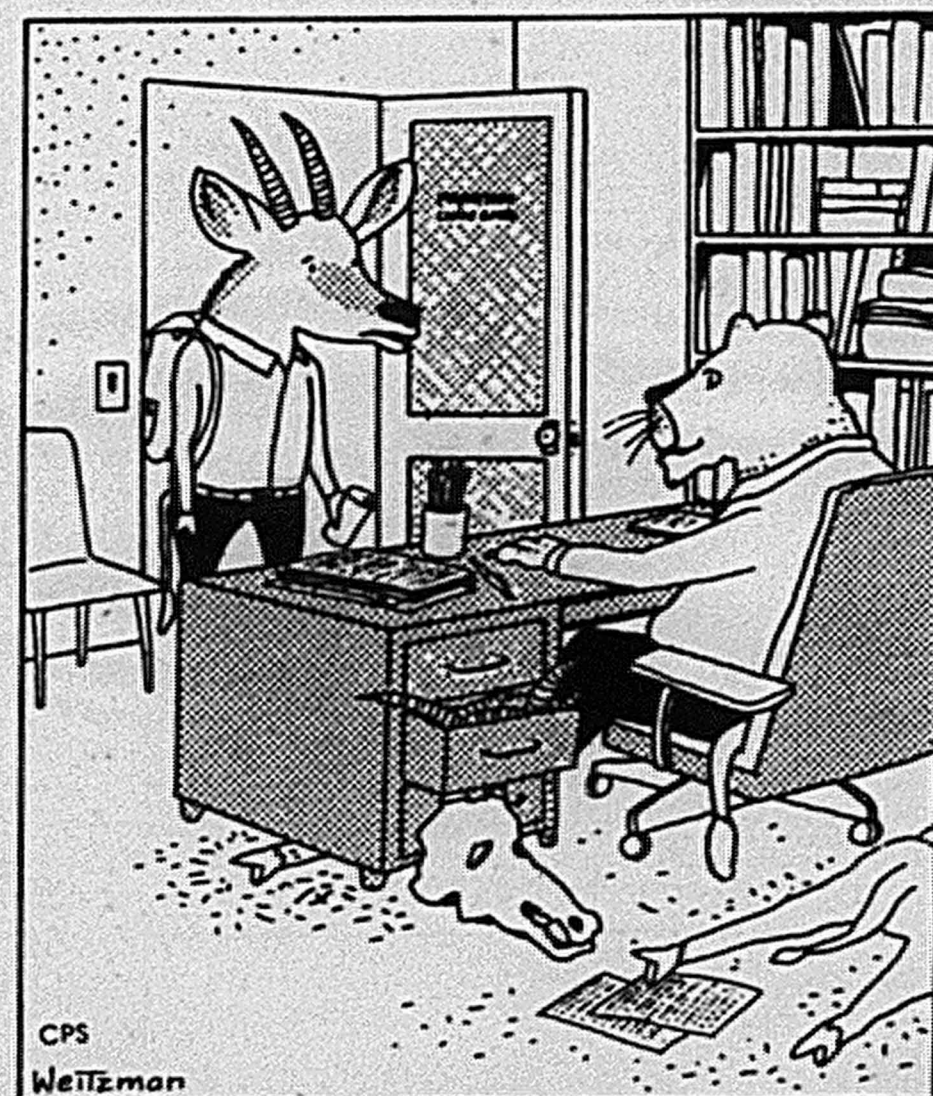


COLLEGE PRESS SERVICE

9 Dad's partner  
10 Veneration  
11 Through  
16 Witty remarks  
18 God of war  
20 Turn inside out  
22 Harvest  
23 King of birds  
24 Biblical name  
26 Game at cards  
27 Runs easily  
28 Declare  
31 Nocturnal mammal  
34 Grain  
36 Continued stories  
39 Fee  
41 Smoke and fog  
44 Din  
46 Country of Europe  
48 Second of a group  
50 Decimal base  
51 Mature  
52 Base  
53 Female relative; colloq.  
55 Golf mound  
56 Dine  
59 French article

## ZOO U

MARK WEITZMAN



CPS

Weitzman

Tom's about to find out why this professor always has time for his students.

## CHI SQUARE

A. DEMIR BINGOL

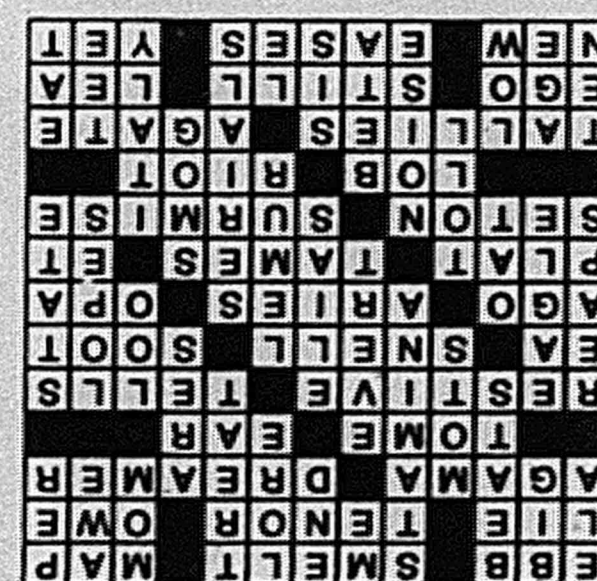


## BILL DOGBREATH

MARCELLUS HALL



## PUZZLE SOLUTION





# Classifieds

Miss  
Classified  
594-7196

## CLASSIFIED COPY DEADLINE

(for businesses and non-college-associated persons only)

- CALL "MISS CLASSIFIED," to place your ad.
- Or come by The Captain's Log office in Room 223 of the Campus Center at Christopher Newport College, 50 Shoe Lane, Newport News.
- To NOON Thursday for following week's publication.
- Please contact Miss Classified for rates and other Classified information.
- Payment must be received before classified will be published.
- Office is closed on weekends. Leave a message for Miss Classified. A representative will contact you.
- Space is allotted on a first come, first serve basis. Ad position cannot be guaranteed by The Captain's Log.

## CUSTOMER SERVICE

Please call 594-7196 on all CHANGE OF COPY OR CORRECTIONS. Deadline NOON on Monday of week of publication.

**Certain Seller Ads** — For individuals only, no businesses, please. Ads listing more than one item: each item must be priced and for sale only, no rentals. Ads cannot be cancelled or changed before the first insertion. Call Miss Classified for further information and rates.

• The Captain's Log reserves the right to discontinue or amend any of our programs or offerings at any time.

MISS CLASSIFIED 594-7196  
50 Shoe Lane, Newport News 23606

## NOTICE—THE CAPTAIN'S LOG

For the protection of our readers, all advertisements are accepted for publication in the Classified Section on the premise that the product is properly described in the advertisement, is available at the advertised price, is available at the advertised address and will be willingly sold to a buyer at the price and conditions stated in the advertisement.

Advertisers deliberately violating these standards will not be permitted to use our advertising columns.

If the reader encounters anything other than faithful compliance with these conditions, we will appreciate your call to the Better Business Bureau, (804) 722-9101, or write BBB, 3608 Tidewater Drive, Norfolk, Virginia 23509.

NOTICE of typographical or other errors must be given before the second insertion for

claims or refund or extension cannot be recognized.

After an ad is ordered it cannot be cancelled or changed before publication. Read ad carefully at the time of first insertion. If it contains an error and you wish to correct or cancel your ad, call MISS CLASSIFIED (594-7196) and ask for CLASSIFIED CUSTOMER SERVICE DEPARTMENT.

The Captain's Log does not assume financial responsibility for losses sustained as a result of any typographical error in any ad imperfectly or incorrectly printed or accidentally omitted.

All advertising copy is accepted subject to the approval or rejection by the management of The Captain's Log, and if rejected, any consideration paid will be refunded to the advertiser, and all parties will be released. The Captain's Log also reserves the right to edit, reject or classify all ads under appropriate headings.

## TAPE-A-QUARTER CLASSIFIEDS: Students, faculty, staff and members of the alumni society of Christopher Newport College. Order a classified for only .25¢ per six lines. See coupon on back page.

### Announcements

Are you interested in being involved on campus and in the community? Join the Social Work Club! Next meeting is Wed., Sept. 18 at 12 noon in CC 214. See You There!

If you are into progressive music, come on out and see *Janallad* at Frizbee's Sports Bar and Dance Club on Sept. 12. Sponsored by Alpha Kappa Psi.

Anyone interested in the Modern Language Organization and/or its member organizations (Der Deutsche Verein, La Organizacio de Estudiantes de Espanol, L'Assemblee Francaise, International Students Association) should stop by our office at CC 206 or drop a note in our mailbox on the second floor of the Campus Center. Have a GREAT semester!

ΣΙΤ Monday Night Football in the back of The Terrace. Come out and see your favorite team. Free food and drinks! RUSH ΣΙΤ

ΦΒΣ's first dance is this Friday the 13th! (9 pm - 1 am). Admission is only \$2. All are welcome! The Sigma's are featuring a Step Show, as well! Come join us with the sounds of DJ Don "Devine."

### Announcements

Anyone interested in playing on an Intra-Rec Flag Football team, call Rusty at 886-2095.

Attention students interested in Psychology — A free informational seminar will be held Monday from 6 pm - 6:45 pm in W 209 and Tuesday from 12:15 pm - 1 pm in W 103B.

Waxing Poetics — sponsored by CAB and Greek Council — Wed., Sept. 18 from 9 pm - 1 am in Christopher's. \$2 students with ID and \$3 guests with Driver's License.

Need a place to keep your books? Student lockers (by the Bookstore) are \$3 per semester plus a \$3 deposit (refundable). Contact Ryan McGee, Student Services, Student Government Association, 594-7197.

Students, Staff and Faculty: Have some free time? Come worship the Lord Jesus with us. We have weekly meetings and Bible studies. We'd love for you to stop by and see us. Inter Varsity Christian Fellowship, Wednesdays at noon in CC 233.

Announce your organization's meetings in the Classifieds! It's great advertising.

### For Sale

Computer Work Station for sale. \$100. Call 591-0513.

Love seat sleeper recently recovered in Williamsburg Blue. Very good condition. Asking \$250 or best offer. Call 247-8582 on Mondays, Wednesdays or Fridays after 5:30 pm. Ask for Bonnie.

### Jobs Available

WANTED: Child care 6:30 am - 9:30 am for two children ages 8 and 11. References required. Please call 877-1860.

### Personals

Sigma's, I'm so proud of how far you've come! Good luck with the dance Friday! One question — "Have you had your wood today?" Love, A Blue Heart.  
To: Mike Barger, Matt Cobb, Melissa D., Tracye D., Lyra E., Tammy M., Easter P., Brea P., Jelynn S., Hilary T., Lauren W. and Melissa Z. Good luck in all your classes and have a great semester! Your SOL, Mary C.  
To Tina Pierce: Thank you for being considerate enough to return my registration to me! You saved me time and \$\$ R.J.T.

### Personals

ΣΙΤ — Leadership — Scholarship — Brotherhood. A lifetime of friendship. RUSH ΣΙΤ.

Anne B., Don't worry too much, everything will work out for the better. Hang in there! Mary C.

To all the ΦΜ ladies ... good luck with RUSH! I'm so proud to be a part of all of you! You've all been great thru my hard times ... I love you all! Love, Zully

Sept 18, Come out and see the band — Waxing Poetics. \$2 students w/ ID and \$3 guests w/ Driver's Lic. Starts at 9 pm in Christopher's. See ya there! To Mike: I love you with all my heart. The last five months have been the best ever. Hope we're together for eternity. Love, Michele.

Are you feeling sad? Well, come join CAB. Let all the news lead. Come join the Greeks! Waxing Poetics will be here for your pleasure. Nothing else can match or measure. \$2 (w/ ID) students/\$3 (w/ Driver's Lic.) guests. In Christopher's, it will be the best! Wed., Sept 18 at 9 pm. We hope you Make the Classifieds work for you. Need to sell something, want to buy something. Let everyone know.

### Personals

The Psychology Dept. and Psi Chi, the National Honor Society in Psychology, are hosting a seminar for psychology majors and those students interested in becoming Psychology majors. The seminar will cover requirements, department resources, department sponsored organizations and graduate school preparation. Plan to attend Monday from 6 pm - 6:45 pm in W 209 or Tuesday from 12:15 pm - 1 pm in W 103B.

Yo! Did you hear about Waxing Poetics coming to CNC on Sept. 18 (Wed.) at 9 pm in Christopher's. \$2 students w/ ID; \$3 guests w/ Driver's License. D: What's a Waxing Poetic?  
S: Yo, dummy, Waxing Poetics is a band coming here to CNC on Wed., Sept. 18 at 9 pm in Christopher's.

Tom, this week has been VERY hectic. I don't know what I would have done without you. I love you, Teresa

### Services

**WORD PROCESSING/TYPING SERVICE:** Term papers, theses, resumes, etc. produced by laser printer. Student rates available. Call 873-0050.

## TAPE-A-QUARTER CLASSIFIEDS

Tape-A-Quarter Classifieds are for students, faculty, staff and members of the alumni society only. Simply write your ad and tape a quarter to it.

- Rates are .25¢ per ad for six(6) lines. Ads exceeding six lines will not be run.
- All ads are run in one issue only. For multiple runs call MISS CLASSIFIED (594-7196) for further information.
- Tape-A-Quarter Classifieds must be submitted on an official Tape-A-Quarter coupon. Coupons can be obtained in each issue of *The Captain's Log* or picked up in Room 223 of the Campus Center.
- Included on the coupon must be your name, phone number and the date that ad was submitted. Failure to include such information will result in ad not being run.
- Tape-A-Quarters can be left in our convenient drop-box located on the first floor of the Campus Center next to the stairwell by the Jown W. Gaines Theatre or by mailing to: *The Captain's Log*, Tape-A-Quarter Classified Department, 50 Shoe Lane, Newport News, Virginia 23606.
- The Captain's Log is not responsible for lost, misdirected or late Tape-A-Quarter ads.

**DEADLINE** for all Tape-A-Quarter Classifieds is NOON on Monday of week of publication. Publication dates are available upon request.

For more information about our classifieds, see page one of the Classified Section or call Miss Classified and ask for CLASSIFIED CUSTOMER SERVICE DEPARTMENT.

## OFFICIAL TAPE-A-QUARTER SUBMISSION FORM

NAME \_\_\_\_\_

PHONE NUMBER \_\_\_\_\_

TODAY'S DATE: \_\_\_\_/\_\_\_\_/\_\_\_\_

Check one: ☐ Student ☐ Faculty ☐ Staff ☐ Member of Alumni Society

Print Message below. Please DO NOT exceed six lines.

\_\_\_\_\_  
\_\_\_\_\_  
\_\_\_\_\_  
\_\_\_\_\_  
\_\_\_\_\_  
\_\_\_\_\_

