

The Captain's Log

Volume XII, Number 5

Christopher Newport College

October 2, 1980

New sidewalks are "exposed aggregate"

by Darlene Willett

The new "exposed aggregate" sidewalks under construction on campus are designed to aid handicapped persons in mobility and are expected to be completed in the next three weeks. In addition to re-

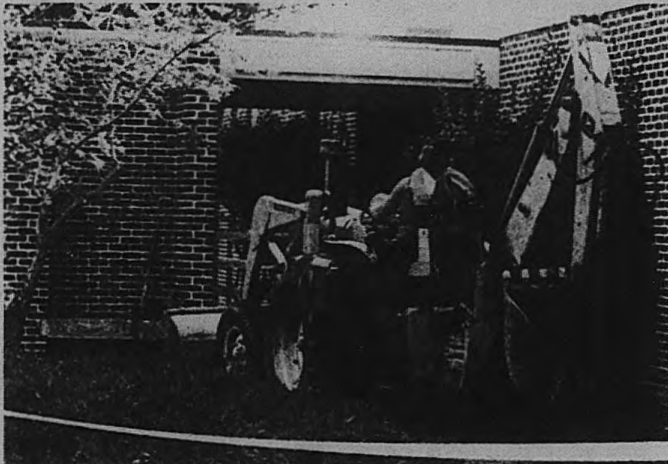
placing the uneven bricks, workmen will raise the sidewalks several inches to prevent water puddles like the ones that now exist around Gosnold Hall.

The existing system has not only been a hindrance to handicapped students, but

has been the subject of many complaints from other students, especially women in high-heeled shoes.

Richard White, Project Inspector, reports that the renovation of CNC's sidewalks is only Phase 1 of *Project Removal of Architectural Barriers*. This project is being undertaken to insure that CNC is in accordance with Virginia's Handicapped Design Standards and Federal Regulation 504, which states that public buildings are to be easily accessible to handicapped persons. Subsequent phases of the project include the installation of bathroom facilities for the handicapped in Radcliffe Gymnasium and the installation of windows in doors at eye-level for wheelchair users. This also will be of help to other students who have complained of the solid wood doors in Newport, Wingfield, and Gosnold.

The Department of Buildings and Grounds asks that students be patient and avoid the construction areas.



Construction workers begin renovation of CNC's sidewalk systems. See other photo, page 8.

New Registrar sees positive growth at CNC

by Patricia Earls

In 18 years, the traditional age of a college freshman, this college has grown from an offshoot of The College of William and Mary to an independent, four-year college. Considering the conditions of most other colleges these days, Robert Netter, CNC's new registrar, is amazed and pleased that CNC is doing well.

Netter has seen the attrition of state college systems. Before coming to CNC, Netter was the registrar in the State University of New York system. In that system, he worked in three colleges: State University College, New Paltz, and Rockland Community College. In the New York system, Netter points out that five years ago there were 72 units. Now there are only 62 colleges in the system. Although the size of these schools varies, most of them had 3,000 to 4,000 students, like CNC.

Robert Netter joined the CNC community on September 16. He's still "learning how the campus operates." From watching the registration process here, Netter agrees that it is "efficient." Netter has had experience with the registration process at both large and small schools. In 1966 he was the associate registrar for the University of Pennsylvania; from 1969 to 1974 he was the registrar for the University of Rhode Island. In his experience with both large and small colleges, Netter says, "If I had to make a choice, it would be for the college that has an enrollment of 4,000 or less."

For Netter, CNC is an ideal location.

He and his wife have always particularly liked this area. Williamsburg has always been one of their favorite places to visit. Of course, from a purely professional point of view, Netter might have opted for William and Mary if there had been an opening. Now that he has seen the "amazing growth at CNC," he sees "very favorable things in this school now."

Netter wants to get to know the students here better. He wants them to be better informed about the Registrar's Office, since it is "the office that students have more continuous contact with throughout college." Netter stresses the permanence of the records maintained there. "These records are forever, forever!"

(Robert Netter will be writing a periodic column for the *Captain's Log* concerning registration processes and deadlines.)

On the bright side . . .

Stolen purse returned

"Nothing in my purse was taken," said Janice Wyatt. "I mean, they had plenty of time to take everything they wanted." Wyatt left her purse on the floor of a hallway in Gosnold while loaning another student her notes. She carried all of her books away but not the purse. "When I went back into the hall, my purse wasn't there. I went into the math office and there it was."

Wyatt thanks the anonymous person who turned in her purse.



Peer Advising resumes next week

by Brenda Budlong

The Peer Advising Office is opening its doors this week to serve CNC students again this semester. The purpose of the one-year-old program is to provide students with an informal setting where they can go for information or assistance with academic, social, or personal matters. The volunteer staff is composed of selected students trained in interpersonal and managerial skills. The office has access to professional services such as the Counseling Center if a problem warrants further assistance. The organization is largely the result of a 1978 survey by Operation Self-Help that reported 76 percent of CNC students would use such a service if one were available.

The professional advisors of the program are Dr. Frank Babcock and Ms. Katie Lewis. The staff of student counselors is coordinated by Shelley Madre; other members include Brenda Budlong, Diane Cardoso, Maragret Hoeft, Beverly Lawson, Mike Mazurek, David Richardson, and Angel Santiago. Several different majors are represented, and there is a variety of backgrounds and ages. Each staff member will be concentrating on one special problem of CNC students and developing programs in areas such as married students, incoming freshmen, veterans, organizing tutoring services, and women coming back to college.

The staff has announced an Open House for Monday, October 6. Students are encouraged to drop by and get to know this service better. The student counselor aides will be there to answer questions or just to chat. The staff begins a new year with the motto, "We have time for you."

The office, in Campus Center 204, will be open Mondays and Wednesdays, 9:00 a.m.-2:00 p.m. and 5:00-7:00 p.m.; Tuesdays and Thursdays, 11:00 a.m. - 2:00 p.m.; and Fridays, 9:00 a.m.-3:00 p.m.; or by appointment.

We slipped!

The article concerning Dr. St. Elmo Nauman in last week's edition was in error. The sentence which read, "This was in violation of his contract" should have read, "The college deemed this to be in violation of his contract." The date given in the article as September 20, should have been September 30.

On page 2, the article, "CLEP tests cancelled" should have read "CLEP tests changed." The headline did not reflect the actual situation and therefore was misleading.

Also on page 2, the article concerning Studio A gave the wrong dates. The meeting was held on September 11 and the show will be held on Thursday, October 9.

Campus Close-Up

Sociology Club to show film

The Sociology Club has some interesting programs on the agenda for this semester. Meetings are held on the second Monday of every month at 12:00 noon in Newport Hall. The October 13 program will consist of an information film on wife abuse. Dr. Carolyn Tie from Peninsula Psychiatric Hospital will be our guest speaker.

Interested students, especially sociology/social work students, are invited to N-115 at 12:00 noon for a stimulating program.

Gymnastics Club to organize

The Gymnastic Club invites all to attend its organizational meeting October 8, 2:00 p.m., in CC-205.

Psych club welcomes Schulz

The Psychology Club will welcome Lynn Schulz, Ph.D., to the Psychology Department at a get-acquainted reception on Wednesday, October 8, at noon in Wingfield 103B. Other faculty members and majors are invited. Dr. Schulz will speak about her background, interests, and areas of expertise.

Are you interested in outings?

If anyone is interested in trying to get the Outing Club motivated again, please call John Mason, 851-4291, after 5:00 p.m.

Alpha Chi elects officers

Tuesday, September 23, members of Alpha Chi elected new officers for the 1980-81 school year. Results of the election were as follows: President, Lisa Bolin; Vice President, Jeff Rountree; Treasurer, Mary Pimblett; Secretary, Denys Llewellyn.

Members are asked to begin consideration of CNC faculty as candidates during nomination of two chapter assistant sponsors.

Attendance at our first meetings of the 1980-81 school year has been good. Initiation of new members will take place this semester, further increasing the size of Alpha Chi. Please come and participate in making Alpha Chi a more visible organization on campus.

Media Center to close early

The Media Center will be closed after 4:00 p.m. on Sunday, October 5, for a reception. The remainder of the library will remain open.

Unclassifieds to meet

The divisional meeting for the Unclassified Division will be held in CC-223, Monday, October 6, noon-1 p.m. Appointment of student representatives will be on the agenda. Anyone with grievances or complaints is welcome to attend this meeting.

Pi Kappa Sigma picks pledges

The members of Pi Kappa Sigma send congratulations to our new fall pledges of 1980. Rush has ended. Bids were mailed, and the ten pledges have been installed. They include Sally Cuik, Carrie Jordan, Patti Kelliher, Marion Klingeburger, Jeannie Kosher, Erin Malone, Margaret McAlexander, Jeanne Tobin, DeeVee Tracy, and Dana Truesdale.

Please note!!!!!!

Deadline for Campus Close-Up is the Friday preceding publication. Information received after deadline will be printed if space and printing deadlines permit.

senate minutes

by Stephanie Mosca

The second meeting of the Student Senate was called to order Tuesday, September 23. Darlene Willett spoke on the Legislation Committee. The purpose of this committee is to monitor the Virginia State Legislature in order to determine what is affecting Christopher Newport College.

Willett also talked about the Student Information Service (SIS). The two purposes of the SIS are to provide the college community with information concerning the Student Association and to carry out all student related surveys.

The next business was to decide when the Senate should meet. By majority vote, it was determined that the Senate shall meet on the first and third Tuesdays of every month at 12:15 p.m. in G-145.

Issues raised at the meeting included student concern over the closing of the tennis courts on weekends. The administration and the Student Association are looking into

the matter at present. Also brought to the Senate's attention was the Career Planning and Placement Office's lack of information on pre-engineering.

Next, a Senate Public Relations Committee was formed. Joel Quass, Student Senate Vice President, stated in reference to the Senate, "This body really has a lot of power. What it needs is better posture and more visibility." Quass suggested organizing a Senate Information Table in the CNC cafeteria. This would give students the opportunity to meet student senators and club representatives and to express problems and suggestions. It is hoped that this interchange would establish the necessary lines of communication.

The Senate Public Relations Committee was well accepted. Jamie Powell, Student Association Attorney General, stated, "It is very important for the Senate to be a visible power. The Senate can be an extremely large organization."

Executive Council Notes

by Stephanie E. Mosca

After the minutes from last week's meeting were approved, the third meeting of the Executive Council convened on Thursday, September 25.

A motion to approve the constitution of Grove Phi Grove was passed. The constitution will now go to the Senate for approval. Approval means that the social fellowship is a recognized organization on campus. Grove Phi Grove cannot be funded, however, since it is open specifically to males.

The constitution for the Baseball Club was presented to the Council. It has been tabled until the next meeting.

The preceding week, Darlene Willett and Mike Hogge had attended an organizational meeting for VASA at Mary Washington College at which Willett was elected Vice President. A motion was passed to appoint Hogge as the voting representative for CNC.

Next, the Executive Council passed a motion that an amendment to the Student Association constitution be tabled for one week. The amendment states that it is mandatory for all school funded clubs to have a representative at all Senate meetings. If the club's representative has two consecutive, unexcused absences, the club will lose its funding.

In an effort to save funds for the students of CNC, the Book Exchange Committee is waiting for official approval to post a computer print-out at the time of registration which lists the number of texts each course requires. Three weeks out of each semester, the committee will post and easel which will list students' names, phone numbers, and saleable books. The Executive Council will pay for

the materials for this easel and Operation Self-Help will pay for the labor.

Mary Kochli, Student Auditor, opened new business with discussion of active clubs who have requested funding, yet have submitted no budget. A motion was passed that only those clubs which have submitted a budget before the deadline will be funded.

Two representatives from the Executive Council are now serving on the Traffic Appeals Board. Peggy Glasheen and Jeff Thomas were appointed after a run-off election was held.

The College Republicans, a reactivated organization on campus, submitted its constitution for approval. It has been tabled until the next meeting. Also tabled until next week was the constitution of *The Buccaneer*, a publication which is designed to combine all the features of a yearbook, newspaper, and a literary magazine.

To the SA constitution, Jamie Powell, SA Attorney General, proposed an amendment to Article 7, Section 3c. Instead of two unexcused absences, Powell wishes it to state "two consecutive unexcused absences." This proposal has been tabled until the next meeting of the Executive Council which be Thursday, October 2, at 12:15 in CC-233.

Plan to vote?

Registration for the November elections ends October 4. Locations are City Hall in Newport News (247-8631) and at the Court House on Kingsway Mall in Hampton (727-6218).

Planning & Placement News

The Office of Career Planning and Placement sponsored a survey of rising seniors during pre-registration last spring concerning recruiting at CNC. The Placement Office hoped to determine from the survey results why more students were not signing up for interviews with the businesses, industries, educational institutions, and governmental agencies who recruit on campus.

Of the 399 persons who registered, 199 persons responded to the questionnaire. Fifty were employed part-time. Of those who held either part-time or full-time jobs, 121 desired on-campus recruiting. Recruiting was favored by 173 of the 199 polled.

Slightly less than half were planning to attend graduate school; 109 wished graduate schools would recruit.

Comments regarding improvement of CNC's recruiting program included:

"It's great!"

"More career days!"

"Make everyone know about it and participate."

"I work full-time and am not able to

come to the recruiting activities. Some night appointments would be helpful."

"Don't know much about it now."

"Have more graduate schools and government agencies. Have more recruiters in the line of jobs involved with the liberal arts."

"Possibly some seminars for potential recruits as to what to consider in a future employer."

The Career Planning and Placement Office appreciates the suggestions for improving the recruiting program. In many instances, these suggestions were used in organizing this year's program. For example, a greater diversity of organizations will be recruiting here this year.

One student suggested that we should have more companies from outside this area. The Placement Office had a very poor response from such firms.

The Placement Office sends every senior a letter at the beginning of each semester listing the business, industrial, and educational organizations that will be visiting the campus.

ENTERTAINMENT

cinema scope

by Patricia Earls

The Seventies saw many "cool" things go out of vogue. The Beatles, as a live group, was one of them. Beatle worshipers have kept up their vigil, pleading for the reunification of the "Fab Four," but ten years have not brought the group back together.

As a nostalgic return to the Sixties, the Eighties have revived the old albums and movies. "Beatlemania"--imitating the Beatles--is thriving now more than other "original" sounds. Recently, the Naro Expanded Theater in Norfolk and FM 99 featured a Beatle extravaganza. They showed four films--*I Wanna Hold Your Hand*, *Help!*, *Yellow Submarine*, and *Let It Be*--all on one night.

Between the films, the theater was filled with Beatle music. The three ODU students behind us loved it. One girl, in her ODU T-shirt and long hair, announced that she had 22 Beatle albums, while she shook her head wildly. The bearded wonder next to her said wryly, "They only made 18."

The first movie, in my opinion, was a cheap shot. *I Wanna Hold Your Hand*

(1978) follows a group of New Jersey teenagers in search of the Beatles. They steal away in a hearse, planning to break into the hotel where the Beatles are staying. Each of them tries to get in using different methods. There are two good sections of actual Beatle footage. The rest of the scenes showing them are shots from the ankle down or from the back. These shots are in no way satisfying, since the only thread of familiarity is a pair of black boots and skinny ankles in skinny black pants. The scenes depicting the fans' hero worship were watered down and didn't reveal the frenzy that is associated with the Beatles.

The second movie is one of my old favorites. *Help!* is a funny movie featuring the Beatles in a mad chase. Ringo's ring is the object of worship for a cult devoted to human sacrifice--with its victims painted red. An interesting juxtaposition in this movie and *I Wanna Hold Your Hand* is the "hero worship" aspect and the outside interference.

In *Help!*, the Beatles are chased and bothered by people, but these people are not interested in their talent. They want

(Continued on page 8)

Rhythm and blues impress better-than-average crowd

by Ana Kimball

Last Wednesday night saw a better than average crowd as the "All-Stars" performed the rhythm and blues for which they are quickly becoming famous.

"The band offered a good cross-section of music by combining rock-n-roll with standard blues, creating an enjoyable atmosphere of music," commented Greg Jackson, CAC Director. The band has performed with the likes of B.B. King, Southside Johnny and the Asbury Jukes, Muddy Waters, Dixie Dreggs and Lightning Slim. Their performance here included tunes by Bruce Springsteen ("The Fever") and Fleetwood Mac ("Tell Me All the Things You Do").

The "All-Stars" members include Lu-

cille Shoettle, vocalist; Steve Riggs, bass; Dick Greene, guitarist; Doug Jay, Harmonica; Paul Hammond, drums; Carlo Novi, tenor sax; Tony Pallagrosi, trumpet; and Sandy Gray, rhythm guitar. Steve Bliley is their manager.

The band provided the audience with good solid entertainment. The music certainly was a switch from the ordinary. However, the "All-Stars" were well received by CNC students. After talking with the band, Katie D'Aiutolo, Assistant CAC Director, commented, "They seemed impressed with the turnout. One band member commented that it was good to see a large crowd at a first-time performance."

It is hoped that the "All-Stars" will be making a return performance.

Sound Solution

by Rick Dunn

The Game is just one more piece of evidence to support a suspicion that I've held for a long time. Queen is one of that small group of rock and roll bands that has no concept whatsoever of what rock and roll really is. Rush is another one.

The Game is being touted as a return to the basics by a band whose trademark has been lavishly produced numbers like "Bohemian Rhapsody." Since they have been so successful with their pseudo-operatic style, I can't understand why they would want to change. I guess it's just another case of a super-group responding to the challenge of the New Wave.

Queen is lost without the studio overdubs that have carried their previous albums. The band's sound is acutely undernourished, not helped at all by the watered-down production. The LP is self-produced, making it radically different

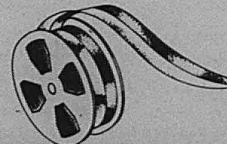
from the Roy Thomas Baker produced albums of days past.

"Crazy Little Thing Called Love" is the closest that Queen comes to rock and roll. But after about ten listenings, the 50's styled tune starts thin.

"Another One Bites the Dust" will probably be the album's most popular cut. Snarling vocals and lean guitar work are draped around a pulsating beat. Apparently this is a neat song to play football by. Tony Hill chanted it after Dallas clobbered Washington, and the Detroit Lions have adopted it as their theme song. Nevertheless, the song becomes a bit boring after five listenings.

"Dragon Attack" is the hardest rocking track on *The Game*. Once again, Brian May's sparse guitar attack is spread over a thumping rhythm track. It's interesting the first time, but puts you to sleep after the second listening.

Queen fights on foreign turf on *The Game* and loses. Maybe their thickly produced, overdubbed sound was outdated but it was a lot more fun to listen to.



The best in the area's newest genre of music!! This band is getting better and better -- their following is getting larger and larger, too!
Presenting --

The Little Big Band

'40's swing and progressive jazz at its fun-loving best!!

Wednesday, October 8th
9:30 p.m. - 1:00 a.m.
in the Cafe

CNC Students \$2.00 Guests \$3.00

Students allowed one guest

Students couples in 40's dress get a 25% discount -- so, break out the zootsuits and pleated skirts, you crazy guys & gals.

A CAC Party Presentation

**TELL OUR
ADVERTISERS
THAT YOU
SAW IT IN THE
CAPTAIN'S LOG**

BENNIGAN'S
TAVERN
SPECIAL PRICES ALL DAY
GRAND RE-OPENING
OCTOBER 6th
11:00 A.M. - 1:00 A.M.
**COME JOIN THE FUN
AND BRING A FRIEND!**
2029 COLISEUM DRIVE

SPORTS

Losing streak continues for CNC soccer team

by David Bean

CNC's losing streak continued last weekend, much to the dismay of both the team and Coach Cummings. The Captains hosted Averett College Saturday afternoon and played rather well despite their loss. Averett is ranked 12th in the nation for Division III schools.

Although CNC lost 2-0, Coach Cummings feels that "we played very well. Starting seven freshmen in the line-up, we did everything but score."

The first half was mostly CNC's, except for a brief period when Averett was awarded a corner kick midway through the half. They placed the ball right in front of the goal where one of their midfielders used his 6'3" height advantage to put the ball in the Captains' goal, giving

Averett the lead. They maintained their lead as the half ended, 1-0.

The second half was as frustrating to the Captains as the first half. "Having a young team who has tasted only defeat all season, things start to get to them. The guys let down a little and that's all it takes. Even though we have yet to win a match, we have yet to be blown out by anyone."

Averett scored its second goal on a corner kick, much in the same manner as the first one. Averett did control most of the second half in handing CNC their second straight loss. Cummings stated that "The guys just are not getting any reward for their efforts--but it's just a matter of time."

The Captains are now 0-4-1.



CNC met Methodist on Monday. For details of the match, which was played beyond the Log deadline, see next week's issue.

Lady Captains drop season's opener on the road

by David Bean

The Lady Captains opened their 1980 volleyball season last Saturday, September 27, not with a bang, as they had hoped, but dropping their first two non-conference matches on the road at Randolph-Macon.

The Lady Captains' first match pitted them against the host, Randolph-Macon Women's College. The first two sets were well played by both squads, as Randolph-Macon won the first set, 15-12, and CNC took the second one, 15-13. In the third match, a combination of CNC mistakes and defense and some good serving from Randolph-Macon proved to be the turning points. Randolph-Macon won the set, 15-6, and the match at two games to one.

In the Captains' second match against Ferrum College, the letdown they suffered in the previous match affected their play. Unable to get their serves on track, coupled with a few "dumb" mistakes, CNC dropped the first set, 15-11. In the second set, everything fell through as Ferrum buried the Lady Captains, 15-9.

Coach Bert Jones commented later, "We did not play as well as we should have. Our services were not anything, either going wide or into the net. Also, at times we were using four experienced players on the court, so this too was a factor. These first two matches were non-conference and only count in the overall win-loss category."

Women's Volleyball Schedule

Fri., Oct. 3	Louisburg College (host), Spartanburg Methodist	Away	6:00 p.m.
Sat., Oct. 4	George Mason University, Roanoke College	Home	1:00 p.m.
Tues., Oct. 7	Hampton Inst. (host), Mary Washington	Away	6:00 p.m.
Sat., Oct. 11	Bridgewater, N.C. Wesleyan College	Home	1:00 p.m.
Sat., Oct. 18	E. Mennonite, Ferrum College	Home	1:00 p.m.
Tues., Oct. 21	N.C. Wesleyan	Away	6:30 p.m.
Thurs., Oct. 23	William & Mary, Chowan College	Home	6:30 p.m.
Tues., Oct. 28	Chowan College (host), Univ. of N.C.-Wilm.	Away	
Sat., Nov. 1	Lynchburg College (host), Emory & Henry	Away	1:00 p.m.
Fri.-Sat., Nov. 7-8	Division III Championship		Mary Washington College

1980-81 Cross Country Schedule

Sat., Oct. 4	Methodist (host), St. Andrews	Away	
Tues., Oct. 7	Mary Washington, Hampton Institute	Home	4:00 p.m.
Sat., Oct. 11	Washington & Lee, Lynchburg	Home	12:30 p.m.
Tues., Oct. 14	Norfolk State	Away	4:00 p.m.
Sat., Oct. 18	Mary Washington (host), Hampden-Sydney	Away	12:30 p.m.
Tues., Oct. 21	Hampton Institute	Away	3:30 p.m.
Sat., October 25	N.C. Wesleyan College	Home	1:00 p.m.
Sat., November 1	DIAC Meet	Home	11:00 a.m.

CNC Club Baseball

Sat., Oct. 4	Apprentice School	Menchville H.S.	10:00 a.m.
Sun., Oct. 5	Apprentice School	Menchville H.S.	1:00 p.m.
Thurs., Oct. 9	Va. Wesleyan	Menchville H.S.	6:00 p.m.
Sun., Oct. 12	Bridgewater	Menchville H.S.	1:00 p.m.
Thurs., Oct. 16	Va. Wesleyan	Menchville H.S.	6:00 p.m.
Sat., Oct. 18	Va. Wesleyan	Va. Wesleyan	1:00 p.m.
Sun., Oct. 19	Smithdeal-Massey	Smithdeal-Massey	2:00 p.m.

Baseball Club drops opener to Smithdeal-Massey

by Mickey Boyer

The opening chapter is over for the CNC Baseball Club. The high point was the impressive showing of the club while suffering a 7-0 loss at the hands of Smithdeal-Massey.

Through the first four innings there was no score, and it looked as if the two teams were evenly matched. In the fifth, two runs were pushed across by a Smithdeal-Massey home run. The sixth inning brought on two more runs, with the final score 7-0 in Smithdeal-Massey's favor. The Captains did collect more hits (7-6), while only two of the S-M runs were earned.

The pitching began strong with Terry Winfrey getting the opening nod to throw the first-ever pitch for a Captains' base-

ball team. His downfall came in the fifth when he walked four straight batters. This brought on Mark Voeglin, who was consistent, but who also had control problems. Finishing up the game were Hank Bonney, who threw for three innings, and Billy Peterson, hurling the last one.

Other starters were Sammy Lynch, catcher; Pete Fallon at first; Kendall Kellam, second; Mickey Boyer, shortstop; and Billy Peterson, third base. Starting in the outfield were Kenny Allison, left; Dennis Parker, center; and Terence McCormick, right.

The next Captain contest is October 4 at 6:00 p.m., at Menchville High School, against the Newport News Apprentice School.



FREE HALF SUB
When you buy a half sub
and a large drink

Valid thru Oct. 9 with this ad

11002-A Jefferson Avenue
596-3047

12288 Warwick Blvd.
599-0167

GDI, Sigma Pi, H-E-H post wins

by Iggy Novo

Last Sunday was the second in this year's flag football tournament, and the weather was much better than the first Sunday's 90 degree dust bowl; pass-the-sunshine-lotion please.

The first game pitted GDI against the OTHGers, and it proved to be a defensive game. After four quarters of play, the score was 6-6, and they went into overtime. In overtime, GDI was able to muster over 100 yards of offense, while the OTHers were intercepted twice; thus, GDI won.

The second game was a cliff-hanger between the OTHG AND Sigma Pi. The OTHG began the game by returning the opening kick 80 yards and scoring two plays later. On Sigma Pi's first position, they marched from their 40 and scored, tying the game at 7-7. Sigma Pi was next to score in the third quarter, making it 7-13, but the OTHGers were able to come back to tie it at 13-13 and force it into overtime. First, Sigma Pi had possession and squeaked out 16 yards in four plays. The OTHG attempted several passes but only gained eight yards on a quarterback keeper, so Sigma Pi won.

The third game, Head-EHO-Hunters vs. the Steel Square, was not as dramatic, but it was emotional, and there was some controversy. The controversy began when the Head-EHO-Hunters' quarterback attempted to escape the rush but let the ball touch the ground as he tried to keep his balance. None of the referees saw this, so he ran for 35 yards. There

Anonymous donor gives Steinway to Music Dept.

by Patricia A. Nuckols

"I don't believe any school this size is as rich as we are in pianos," says CNC piano instructor Glenn Winters.

In September a brand new, model B, Steinway piano was donated to CNC's Music Department. The donor prefers to remain anonymous.

What makes a Steinway so special? Most concert artists use Steinway pianos in their performances. Dr. Hines notes, "Most people consider the Steinway as the best piano made in the country."

Director of Music Dr. James Hines says, "This is the second piano the donor has given in the past two years." The first, a Japanese-made Kawa, is worth roughly \$10,000, while the new Steinway is priced at \$15,950. "The donor realizes we have a growing music department," adds Hines, "and wants to support us."

There are seven keyboard majors and many music students who will benefit from the new piano. The Steinway, located in CC-142, will be used by Glenn Winters and Anne Haynes for teaching purposes. It is doubtful the piano will be used for stage performances because of the cost of hiring professional movers.

Student, instructor enjoy new piano

Michelle Smith, a music major, and Mrs. Anne Haynes, a piano instructor, are among those who use the Steinway piano. They feel that the gift is "great."

One problem, which is to be solved soon by the Campus Center addition, is the size of the room into which the piano must fit. The piano is large and the room is small.



The Steinway was given through the CNC Educational Foundation, Inc.

Foundation established to administer gifts

by Kim Fizer

The Christopher Newport College Educational Foundation, Inc., has received its first gift. The foundation, which was officially incorporated on September 2, 1980, recently received a \$15,950.00 Steinway piano.

President Anderson initiated the foundation to bring more money to the College. A foundation such as this is commonly found in colleges. Some colleges have more than one. The purpose of this foundation is to solicit, to receive, to hold *inter vivos*, and to administer gifts of real and personal property. With this foundation, a person may make a contribution to the College by giving an actual object,

such as a piano, or making a monetary contribution, since the college is not allowed to hold stocks.

The Board of Directors is comprised of only three members to date. President Anderson is the registered agent and director of the corporation. Other members are Mr. Harrol A. Brauer, Jr., Rector of the Board of Visitors, and Mr. Stephen D. Halliday, Secretary of the Board of Visitors. Eight additional members will be elected in order to have 11 members on the Board of Directors. The Board is not limited to persons connected with the College.

A regular meeting date has not yet been established.

CNC Pub gets a new look

by Kim Fizer

The Pub has a new look this semester. John McCaughey, Director of Student Life, and Dick Ryther, Assistant Director of the Campus Center, played interior decorator to jazz up the Pub's wall. At a rummage sale the two were able to buy, for \$50.00, five maritime pictures, a considerable length of fishing net, two whale harpoons, and a life preserver. These new accessories are in keeping with the theme of ships and the sea associated with the college. A pool table is also a new feature.

Dave Zareczny is another new addition. He was hired in August as the new Pub manager. He replaces David Edgerton, who is now working at Anheuser Busch,

(Continued on page 8)

SMURFS ARE FOR SMILING



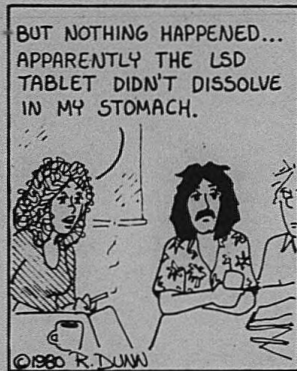
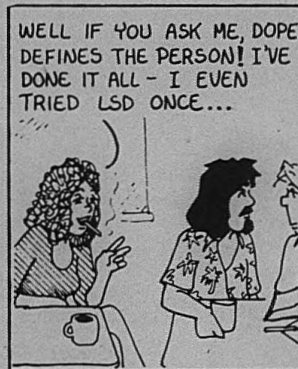
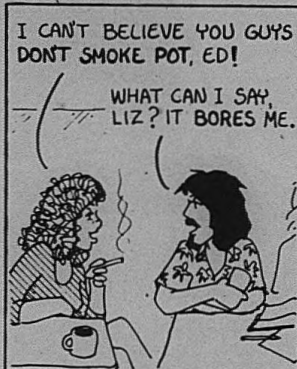
MARY ANN'S HALLMARK SHOP
Oyster Pt. Rd. & Warwick Blvd.
877-3886



The bumper stickers on cars in the CNC parking lot as accurately represent the times as does the graffiti on desks in classrooms [see editorial on page 7 concerning graffiti].

Campus Cracks

RASPBERRIES



Classifieds

FOUND--Audrey Humphrey's silver pen; to claim, come to Campus Center Information Desk.

FOR SALE--Boys' clothing: 2 BTK sport jackets, size 6, VG condition, \$5 each; also vests, pants, and shirts, sizes 5, 6, and 7; call 595-8663.

FOR SALE--40 pc. glassware, service for 8; green thumbprint pattern; includes iced teas glasses, cordial glasses, sherbet dishes; sm. and lge. wine goblets; \$20; call 596-8663.

STOLEN--Red Head "Professional" Tennis Racquet; brand new; racquet readily identifiable by owner; please call 874-4567; reward offered.

FOR SALE--Vivitar 35 mm. SLR camera with lens and case, excellent condition, \$125; 229-0879, ask for Phil.

FOR SALE--custom made surf fishing rod with quick reel, excellent condition, \$40; 229-0879, ask for Phil.

FOR SALE--Schwin LeTour bicycle, 10-speed, new tires, good condition; \$75; 229-0879, ask for Phil.

WANTED--Female Christian roommate to share apt. 1/2 mile from college; \$110 plus 1/2 of elec.; 595-2934.

ROOMMATE WANTED for nice furnished trailer; rent 100 + utilities; Carrollton, 20 mi. from school; 380-0874.

FOR SALE--One Advent model 300 FM stereo receiver and two Yamaha NS-5 speakers; like new; \$369; call 874-9472.

REWARD--Lost gold Cross pen in Wingfield 124 on 9/17/80; sentimental value; no questions asked; Susan Lewis, X7099, T4C.

ROOM FOR RENT--in private home in Hilton area, 5 min. from CNC; refrigerator and cooking privileges; no smoking; call 596-8249.

RIDE NEEDED--from Norfolk to CNC (area of Tidewater Drive and Cromwell Road). Ask for Little Archie. Call 627-9668.

FOR SALE--Crate furniture similar to "This End Up"; brand new; never used; complete set; no cushions; \$250.00 or best offer; call 238-3373.

ROOM--free rent; second month on two-month lease. Share 7-room house, \$120.00; includes all utilities; male; downtown; try it; call 596-0364.

CHIHUAHUA, 9 mos., male, AKC, all shots, great personality, affectionate; needs good home, owner moving. Contact only Lynnette at 595-4598.

REWARD--for set of lost keys, disappeared Sept. 8; monkey fist key chain; please phone Andy, 595-8884.

LOST--in men's room, second floor, Wingfield Hall; a gold

signet ring and a gold college ring; sentimental value; substantial reward. If found, call Gary Smith at 229-6661 afternoons or evenings.

NEW HOME for beautiful black lab, female, under two years old, very gentle; owner wants to give to good home; purebred, all shots up-to-date. Call Webber Casey, ext. 7051, or 596-7807.

Students interested in part-time or full-time jobs should make an appointment in the Office of Career Planning and Placement, CC-208.

PART-TIME JOBS

Secretary/Receptionist, Management Trainee, Teacher, Babysitter, Cleaner, Telephone Solicitors, Building custom built frames, Cashier/Cook, General Contracting, Yardwork, Secretary, Painters, Warehouse Helper, Collector, Bus Drivers, Sales Clerk, Waiter, Live-in Sitter, Driver.

FULL-TIME JOBS

Sales Representative--M.I.S. degree or technical selling experience.

Management Trainee--bachelor's degree required; strong background in finance and banking.

Receiving Clerk--Requires 3 1/2 years' experience as a receiving clerk.

Senior Software Analyst--college graduate and a background in technical programming on a large scale computer; experience in a real time CICS, IMS environment.

Programmer Analyst--Four-year college degree in computer science or equivalent; minimum of two years programming with knowledge of JCL, TSO, Fortran, and COBOL; experience in software project management, structured design and documentation and programming evaluation.

Environmental Analyst--degree in biology, engineering or other related environmental science; some experience in the environmental control field.

Corporate Accountant--bachelor's degree in either the accounting or finance area; 3-4 years public or industrial accounting experience.

Associate Chemist--A.A.S. or B.S. chemistry to be trained in nuclear water chemistry and steam generator cleaning.

Junior Systems Analyst--bachelor's degree in computer science or related field; one year's experience.

Senior Systems Analyst--bachelor's degree in computer science or related field; 3-4 years' experience.



Calendar of Events

Friday, October 3		
Curriculum Committee	CC-233	Noon-1 p.m.
Captain's Log	Warwick Blvd. Pizza Hut	11:30 a.m.
Dana Aytch	CC-207	10:15-11 a.m.
Dubose Meeting	CC-209	12:30-2 p.m.
AKPsi	N-125	Noon-1 p.m.

Saturday, October 4		
Artists-in-Concert (Robert White-tenor)	Theatre	8-10 p.m.

Sunday, October 5		
Honors Council Film Series	Theatre	6-10 p.m.
Sigma Pi	CC-233	7:30-11 p.m.

Monday, October 6		
Unclassified div. SA	CC-233	Noon-1 p.m.
InterVarsity Christian Assoc.	CC-205	Noon-1 p.m.
Philosophy Club	CC-207	Noon-1 p.m.
AKPsi	CC-209	Noon-1 p.m.
U.S. Army Recruiting	CC-227	10 a.m.-2 p.m.
Sigma Tau Delta	Admiralty Room	Noon-1 p.m.
National Sex Education Week Info.	CC Hallway	9 a.m.-2 p.m.

Tuesday, October 7		
BSA Rehearsal	Theatre	4-7 p.m.
Honors Curriculum	CC-214	2:30-4:30 p.m.
Baptist Student Union	CC-233	12:15-1 p.m.
BSA Rehearsal	CC-233	5-7 p.m.
VCU Dept. Urban Studies & Planning (Placement)	CC-209	9 a.m.-noon; 1-4 p.m.
Government Club	Admiralty Room	Noon-1 p.m.
AKPsi	N-125	Noon-1 p.m.
National Sex Educ. Wk.	CC Hallway	9 a.m.-2 p.m.

Wednesday, October 8		
BSA	CC-233	Noon-1 p.m.
Gymnastics Club	CC-205	2-3 p.m.
Pi Kappa Sigma	CC-207	Noon-1 p.m.
United Va. Bank (Placement Office)	CC-209	9 a.m.-noon; 1-4 p.m.
Sigma Pi	CC-209	Noon-1 p.m.
AKPsi Pie Sale	CC-227	8 a.m.-5 p.m.
AKPsi	N-125	Noon-1 p.m.
BSA Bake Sale	CC Hallway	9 a.m.-2 p.m.
National Sex Educ. Wk.	CC Hallway	9 a.m.-2 p.m.
InterVarsity Christian Assoc.	CC Hallway	10 a.m.-Noon
Career Program	CC Hallway	11 a.m.-1 p.m.
CAC Entertainment "The Little Big Band"	Cafeteria	9 p.m.-1 a.m.

Thursday, October 9		
BSA Rehearsal	Theatre	4-7 p.m.
Honors Curriculum	CC-214	2:30-4:30 p.m.
Audio Metric Workshop	CC-233	8 a.m.-5 p.m.
Student Association	CC-205	12:15-1 p.m.
Audio Metric Workshop	CC-207	8 a.m.-5 p.m.
Audio Metric Workshop	CC-209	8 a.m.-5 p.m.
Government Club	Admiralty Room	6-7 p.m.
National Sex Educ. Wk.	CC Hallway	9 a.m.-2 p.m.
BSA Rehearsal	Cafeteria	4-7 p.m.



(Continued from page 7)

that she would "like to chop off at the wrist with a dirty, rusty, X-acto blade" the thief's hand.

The editor would like to clarify her statement. Under no circumstances would she actually attack anyone over the loss of eight dollars, or anything so petty. The editor is not a violent person in pursuit of a victim for the "X-acto blade slaughter."

EDITORIAL

Graffiti--the good, the bad, and the ugly

If you can't get home in time to watch *For Your Information* or have to miss *Meet the Press* and *Sixty Minutes* in order to study, don't fret. You can find it all on the desk tops in any classroom at CNC. It's called graffiti.

There appear to be seven major classifications of graffiti: (1) historical, (2) love and sex, (3) political, (4) philosophical, (5) opinion poll, (6) art, and (7) inquisitive.

Historical graffiti includes all of the traditional, single, four-letter words (in case you don't know one), anything having to do with Kilroy (who may or may not have been here at CNC), and the single words "peace" and "love" (these are left over from the last generation of graffiti writers).

Love and sex graffiti tells you what the latest sexual perversions are and who loves whom. Apparently, it's not "true love" until it's written on your desk at school.

Political graffiti, the most satirical graffiti classification, can tell you who's running for President (in case you missed the debate), what (in historical graffiti terms) Republicans and Democrats are, and whom to vote for in the upcoming election.

Art graffiti includes caricatures as well as good, old-time "doodling."

Philosophical graffiti, often the most comical, can tell you what life is and whether or not it is worth living. But then again, one author disputed the reality of life's existence by stating, "There ain't no life no where."

Opinion poll graffiti begins with a question and then takes on a pen pal appearance. Some desks have as many as ten responses to one question.

And let's not forget inquisitive graffiti, whose most classic example is "Who sits here?" followed by ten numbers where you can sign your name.

So now we can agree that the content of graffiti is amusing, comical, witty, serious, lewd, and often quite creative. But what about graffiti itself?

Graffiti is destruction of private property. It is dirt and it is grime. It is Mom with the Spray-n-Wash scrubbing away at the elbows of a \$35, white oxford cloth shirt. Graffiti is 30 desks in a classroom and not a clean one present. It is an elevator that's costing you money to be repainted every year. Graffiti is a statement on the maturity of many CNC students.

D.W.

We didn't mean it . . .

In last week's editorial concerning a stolen wallet, the editor stated
(Continued on page 6)

Captain's Log

Editor-in-Chief Patricia Earls
News Editor Darlene Willett
Feature Editor Kim Fizer
Sports Editor David Bean
Entertainment Editor Ana Kimball
Photography Editor Sandra Ripley
Graphics Jeanne Neupert
Business Manager Jeff Rountree
Advertising Manager Gregg Klich
Secretary Tina Drew
Staff Rick Dunn, Janey Hart, Stephanie Mosca, Robert Hollinger, Mickey Boyer, Patricia Nuckols, Nat Webb, David Byrn, John Mason, Bob Carter, Stuart Pollock.

Advisors Dr. James Morris, Dr. Kenneth Newell



Crow's Nest

Tribute to a critic

by David Byrn

Author's Note: From the start, I wish to point out that the topic of this essay (second in a series) is criticism. It appears that some people (who shall remain anonymous) feel that there was no real point in my last story. Well, make no mistake, it's in black and white.

Developing an insight into human behavior is a talent that everyone possesses, but few choose to keep to themselves. It seems that presumption breeds criticism.

I find that in artistic application (i.e., writing a column), there is always someone who dislikes the style, message, title, writer, or other assorted odds and ends. My best defense is that I don't need one; you like it or you don't. I certainly do not lose sleep at night worrying about it.

Unfortunately, many people don't develop such a casual attitude towards criticism; they don't like it. In fact, in the U.S. alone, more constructive critics are buried in one day than all the people killed in the bathroom in one year. Tact is the name of the game; so is staying alive! After all, you don't tell a gun-toting maniac that he has bad breath. I seriously doubt anyone ever told Genghis Khan that he ate like a pig.

Then there are those people who just

curl up and die upon hearing a critical remark. They spend two-thirds of every waking moment rushing in and out of closets, washrooms, and department stores to insure that no one will have anything bad to say about the way they look. Little do they realize that nobody cares except other people just like them. If this description fits, I would give serious thought to just being yourself. After all, at 80 years of age, who wants to worry about his rocker being in style?

Finally a fitting tribute to the critic himself. A man who is above fault. A man who is an expert in all fields of human endeavor. A man whose tastes and opinions are universal in appeal and application. A man who with his last dying breath will swear that Rembrandt was a third grader armed with a paintbrush, that Jim Thorpe was lucky, and that annexing Texas into the United States was a big mistake.

I can see it now: he arrives at the pearly gates of Heaven only to have St. Peter slam the gate in his face, retorting, "Your tie is too loud. It looks like an explosion at Walt Disney Studios."

The opinions expressed in this column should not be construed as representing the views of the staff.

Classic Film Series offers "A Man for All Seasons" Sunday evening

A Man for All Seasons, the story of Sir Thomas More's confrontation with King Henry VIII of England, will be shown Sunday at 6:30 p.m. in the Campus Center Theatre. Admission is \$1.00.

When Henry VIII decided to divorce his first wife, Catherine of Aragon, in order to marry Anne Boleyn, one tremendous obstacle loomed in his path: the Roman Catholic Church. Faced with the opposition of the Church to his divorce and remarriage, Henry tore England away from Rome; and when he did so, he demanded the formal allegiance of his followers.

The statesman Thomas More was caught in this situation between his loyalty to his king and his loyalty to his conscience. For a while, he thought he could solve his dilemma simply by remaining silent, but he was wrong.

Come see Paul Scofield and Orson Welles in this moving drama, and join other members of the audience for a discussion of the rights of the State and the rights of the individual conscience after the movie in the Pub.

Intramurals

(Continued from page 5)

were also several early whistles on both sides and tempers flared.

The Head-EHO-Hunters scored first and never relinquished their lead. It was 24-0 in the final quarter, and with 35 seconds left, the Steel Square finally scored, but it was too little too late. The final score was 24-6.

cinemascope

(Continued from page 3)

Ringo's ring. The only true "Fans" are two prim British women who wave at them from across the street. "They expect it, I suppose, being famous and all," they say. The scene in which the Beatles play for taping purposes in an open field surrounded by tanks, soldiers, and netting is similar to scenes wherein they play surrounded by policemen. This movie features a great deal of music and "Beatle antics," which are musts for any good Beatles movie.

Yellow Submarine never gets old. The animation is so intricate that, even after seeing it seven times, we still find things which we missed before. The music in this movie is the best of any of the Beatles movies. With the music and the almost hallucinogenic cartooning, this movie is always a delight for the eyes and ears.

Unfortunately, we fell asleep during the last movie. Three consecutive movies with only coffee and piped-in music in between became a little taxing. *Let It Be*, according to our insomniac date, was great. We cannot talk about the "rooftop concert," since we did not see it, but rumor has it that it was a high point in Beatles history. So much for high points; we were snoring.

The film is sponsored by the Honors Council, the History Department, the Sub-Committee of the Dean's Colloquia, and the Classic Film Club.

Pub

(Continued from page 5)

Inc. Zareczny brings to his job 11 years' experience in the Navy as a ship serviceman.

Patrons of the Pub complain that beer prices are high. Zareczny and Ryther point out that the Pub's prices are cheaper than in other places. Also, the Pub has to be self-sufficient. If anyone wishes to make any complaints or suggestions, Zareczny is conducting a survey to enhance the services already offered. Patrons are urged to fill out a form, as Zareczny adds, "I'm out to please everybody."



New sidewalks on campus are raised several inches. See story, page 1.

Survey

Help us provide you with better service. Please take time to fill out this survey.

1. Are there any brands of beer you would prefer on tap? If so, name the brands. (Suggestions: Andeker, Pabst, Miller, Miller Lite, Stroh Light, Budweiser, Heineken)
2. Are there any brands of package beer you would prefer that we don't presently stock?
3. Do you have suggestions for other food items? (Suggestions: beer nuts, Slim Jims, beef jerky, potatoe chips, etc.)
4. Are you satisfied with the personnel working in the Pub and the service they provide?
5. Other suggestions?

Turn survey in at the box in the Pub