

The Captain's Log



Volume VI, Number 13

Christopher Newport College

Newport News, Virginia 23606 November 25, 1974



THE NEW MORNING STRING BAND

SGA to provide New Morning String Band as Turkey-Day Special

In order to put students in the right spirit for the Thanksgiving weekend, the Student Government Association has arranged for the New Morning String Band to play from about noon to 2:00 pm (lunch

hour) this Wednesday, Nov. 27.

As an added attraction, a keg of beer will be put on special at 10¢ per glass, according to Mike Jones, Food Service Manager for CNC.

Coffee House/Pub Being Constructed in CNC Cafeteria, Spring Opening Set

It now appears that a long awaited idea will finally become a reality this coming semester when the Campus Center opens CNC's very own coffee-house/pub.

The south section of the cafeteria will be partitioned off with paneling, the walls will be painted, table cloths will be added, and new lighting will be employed for atmosphere. In addition, a stage or riser will be provided for live entertainment which will be offered at various times yet to be announced.

The project is a joint effort of the Campus Center, the

SGA, and the Szabo-Crotty Food Service with considerable aid from the Pi Kappa Sigma Sorority.

CNC student, Terry Shannon who is chairperson of the decorating committee and one of the prime motivators of the project, says that the final decisions for decorations have already been made and all that is left now is "to get the job done." The job will probably require most of the semester break to be completed with all labor being provided by student volunteers.

Ultimately, the pub area will be treated as a sit-down

Financial Aid may be boon or bane, ask Ward at 'Hot Seat'

As a student service, the Financial Aid Office lies under the Office of the Dean of Student Affairs. The Financial Aid Committee oversees policy for the general operation of the student aid program and consists of student, faculty, and staff representation.

The Chairperson of the Financial Aid Committee is a member of the Student Affairs Council, the student members are appointed by the Dean of Student Affairs upon recommendation of the SGA, and the faculty and administrative members are also appointed by the Dean.

The major functions of the Financial Aid Office are: advise and counsel students, the parents, and public on the Financial Aid Programs at the College; according to existing guidelines, submit annual applications for Federal student aid funds and biennium budget requests for State funds; determine financial aid awards for students in accordance with Federal, State, and local statutes, regulations and guidelines and in conformance to policy as set forth by the Financial Aid Committee; maintain records on individuals and programs required by regulations; make reports as required by Federal, State, and local regulations.

The major programs administered by the Financial Aid

Office are:

Federal-Supplemental Educational Opportunity Grants Program; National Direct Student Loans; the College Work Study Program; Law Enforcement Educational Program;

State-Virginia Undergraduate Scholarship Program; Virginia State Student Loans;

Local-A limited number of scholarships made available by local donors.

Students must apply directly to some of the programs which are administered through the College's Financial Aid Office. These programs include the Federal Basic Educational Opportunity Grants Program and the State College Scholarship Assistance Program.

Students with questions about financial aid should go to the Financial Aid Office in Gosnold 216 or call ext. 316. The Director of Financial Aid will also like to hear questions and talk to students at the "Hospitality Hot Seat" in the Campus Center between 12:00 and 1:00 pm on Tuesday, November 26.

CNC Choir to Give Christmas Concert

The Christopher Newport College Choir, under the direction of Mary M. Thompson, will present a concert of Christmas music on Sunday, December 8, at 8:00 pm in the Christopher Newport College Campus Center Theatre.

Works to be presented include Christmas anthems by William Billings, an eighteenth century American composer; Martin Shaw and Peter Warlock, twentieth century English composers; and traditional Christmas carols.

Soloists will be Ann Czarnecki, Patricia Bentley, Kay Stokes, Riki Murphy, and Glen Van Metre. The accompanist for the choir will be Glen Van Metre.

The public is cordially invited to attend. Faculty, students, and staff of the college will be admitted to the concert free. There will be an admission charge of 50¢ to the general public.

SAGA OF THE PAY TOILET

Saga of the Pay Toilet

A Dime he lacked,
But he had tracked
Alas, an hour or more.
The store was gloating
His teeth were floating
He did it on the floor.

"I beg forgiveness,"
he did write,
"But surely you can
see my plight!
I could hold it, hold it
Nevermore!
I had no dime
(I had no time!)
Gee, that's too bad about
your floor!"

Probably one of the biggest crimes against nature is being perpetuated right under our very noses, yet it continues to go virtually unnoticed. It is that of the pay toilet. It must have taken a brilliant scoundrel to invent such a notion. One of the main problems with the pay toilet is its brilliance.

The pay toilet takes cruel advantage of an involuntary life process and usually occurs in situations where one has little time to argue its morality. How a store or other place of business can have the audacity to charge a

dime for the privilege of using their restroom (which is usually filthy anyway) is beyond me. I pity the hapless soul who innocently anticipates relief and comes upon a pay toilet.

We know that pay toilets are, at the very least, unjust. But what can we do about it? Putting aside the more obvious drastic measures, there are some solutions. Citizens' groups against pay toilets are springing up here and there around the country. In the near future, the problem may even appear on a ballot.

Often, just people being themselves overcomes the problem. If you have been in a public pay toilet lately, you may have noticed that people tend to hold the door open for whoever is next in line. If you have more rebellion in you than pride you may crawl under (if possible).

Because of these possible alternatives, obviously businesses and stores cannot be reaping large profits. Maybe therefore, the pay toilet is on the decline. Just keep all this in mind the next time you are stuck for a dime.



VETERANS' HOT LINE: Questions And Answers On Education Benefits And Problems

QUESTION: Last year I received a card from the VA requesting me to certify the

number of hours and the dates of the semester. When should I expect to receive the card?

ANSWER: This system has been changed. The verification of Pursuit Cards will no longer be sent to the veteran. Under the new procedure the card will be mailed

to the school. The Vet Rep and school officials will verify the information on the card against school records and return the cards to the VA Regional Office. This verification is normally accomplished the month prior to the last month of enrollment certification. We have already completed the verification for those veterans a time.

certified only for the fall semester.

QUESTION: Is it possible for me to receive benefits for an OJT program and education at the same time?

ANSWER: No. The law states that a veteran may be enrolled in only one program at a time.

DR. BOOKER WAS GUEST ON WTAR-TV

Dr. H. Marshall Booker, Professor of Economics at CNC, appeared on the "Dick Lamb Show," WTAR-TV (Channel 3), on Thursday, November 21.

Mr. Lamb interviewed Dr. Booker on the topic of "Current Economic Conditions."

V.C.U. TO OFFER COURSES DURING CHRISTMAS VACATION

RICHMOND--For students who will be in the Richmond area during the Christmas holidays, the Evening College at Virginia Commonwealth University is offering eight three-credit courses in an intersession, from December 26 thru January 11.

The courses, offered during the seventeen-day break, include Cultural Anthropology, General Sociology, Human Sexuality, Mental Hygiene, US Social Problems, History of Civilization, Effective Speech and Speech for Teachers.

Classes will be held from 9 am until 2 pm Monday thru Friday. For registration information contact the VCU Evening College 770-6731.

NAME THE PUB CONTEST OFFERS CASE OF BEER AS FIRST PRIZE

Christopher Newport College's new pub needs a name, and so the Campus Center Cafeteria is sponsoring a contest to name the 'pub.'

First prize will be a case of Schlitz beer. Other prizes include T-shirts and beer mugs.

Contest deadline is Dec. 5, and the winning name will be announced at the bonfire Friday night, Dec. 6. Enter by placing your suggestion in the box in the Campus Center Information Desk.

Letters from our readers on matters of general interest are welcome. However, they are subject to editing and must be signed. Please include full address and, for verification only, telephone numbers. Anonymous letters will in no case be published.

The Captain's Log Staff

EDITOR-IN-CHIEF:
ASSOCIATE EDITORS:

Stuart Smith
Susan Want
Missy Trevallion

ADVERTISING MANAGER:
ENTERTAINMENT:
SPORTS:

Diane McQuade
Dan Kooi
Doug Ferris

PHOTOGRAPHERS: David Lyon (Chief-Photographer), Martin Green, Bobby Oliver, Thomas Minniear
STAFF: Ray Barnes, Faith Ann Gibson, Lisa Halachis, Mark Goldstein, Pat Roof, Jan Meredith, Ellen Layman, Karen Gardner, Larry Dillon, Sheila May
Jeanne Elmore, Robby Duncan, Ann Czarnecki
The Captain's Log is published weekly during the school year. Deadline for all advertisements and articles is the Thursday preceeding Monday publication. Contributions and letters to the Editor are welcome. All material is subject to final approval of the Editor.

Players Production of 'Farewell, Judas' Filled with Violence, Indifference to Suffering

by ANN CZARNECKI

In an era of increasingly remote bureaucracy and terrifying violence, it is chilling to watch a play that predicts for the future more bureaucracy and more brutality. Such a play is 'Farewell, Judas' by Ireneusz Iredynski.

The production of 'Farewell, Judas' by the Christopher Newport College Players has that horrible atmosphere of indifference to human suffering and the preoccupation with power and violence.

The setting is an abandoned gymnasium. The old gym symbolizes what the playwright emphasizes throughout the play: that even the most benign of things are instruments of evil, for one sees the abandoned gymnasium gradually come to be used as a torture chamber.

The play itself deals with one man, Judas, who is caught between the demands of two opposing groups -- one a government organization, and the other an underground group of rebels. Judas must make a decision whether or not to betray his underground boss and it is with this decision that the plot takes its form.

Steve Cupp as Judas plays an introspective intellectual man. Cupp with his talent for restraint and subtle domination of the action makes clear to the audience each new decision he must carry out.

John, played by Bruce Pittard, is an interesting characterization. Though at first his characterization seems to be that of an exaggerated punch drunk boxer, one soon realizes that John is a product of a society that treats him ruthlessly. He has dissolved into a vulgar hit man who has decisions made for him, and who cannot really care about another human being.

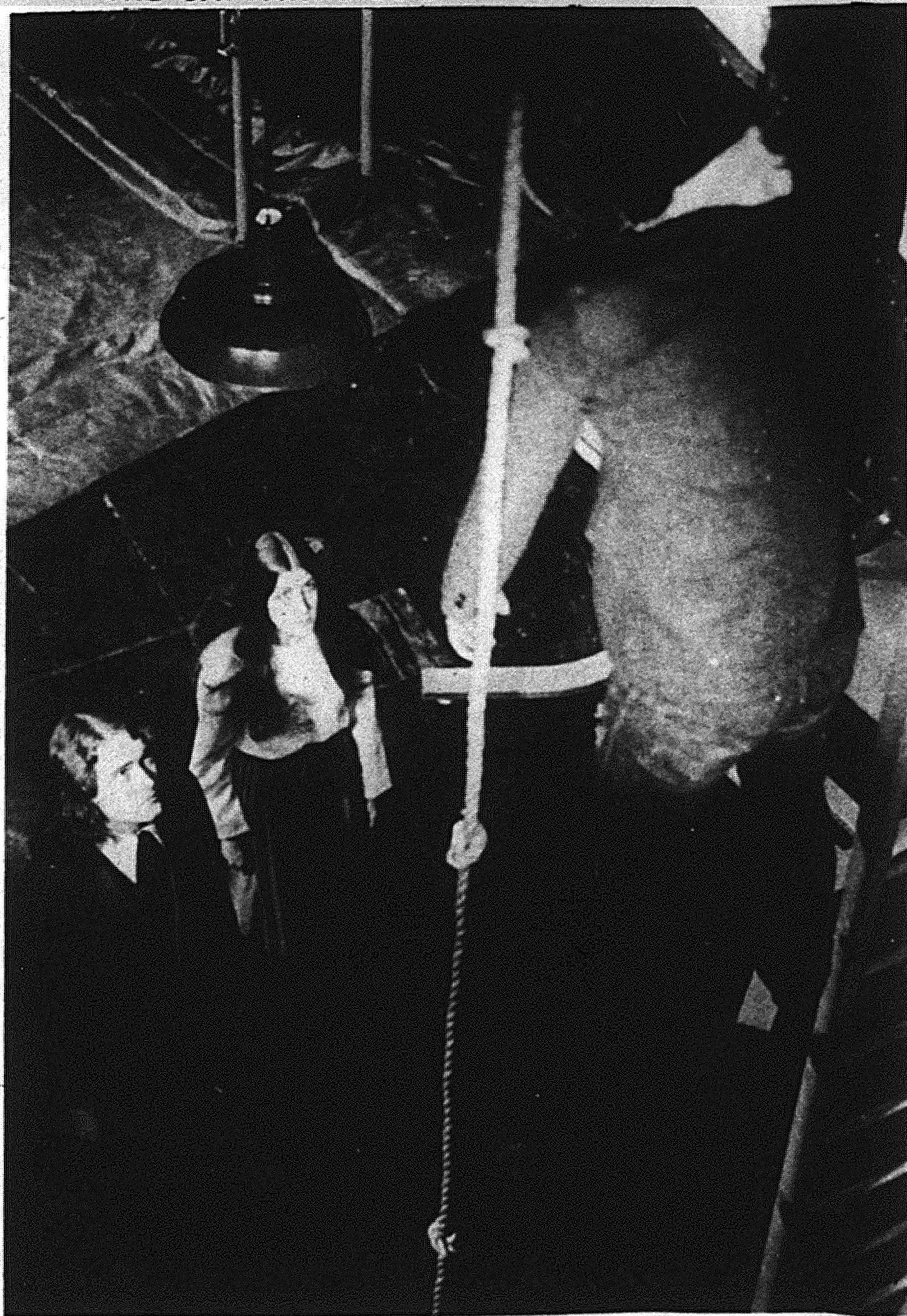
Stan Fedyzyn's characterization of Peter is a study of very human proportions. He makes Peter a man caught in the dilemma of torturing his friend and comrade Judas because they are his orders from the boss.

The Commissioner, a characterization played well by Gary Brown, is especially chilling. He represents the 'state,' the bureaucracy that cares for power at any cost. Brown's icy manner and meticulousness of dress and action fit in excellently with his characterization. The ironic use of the nailfile, a symbol of cleanliness to provoke untidiness in the form of torture, is very effective.

Carla LaDell as the girl is a minor role, but one she does extremely well. One wishes, however, to see Carla in more active and diversified roles in the future productions of the season.

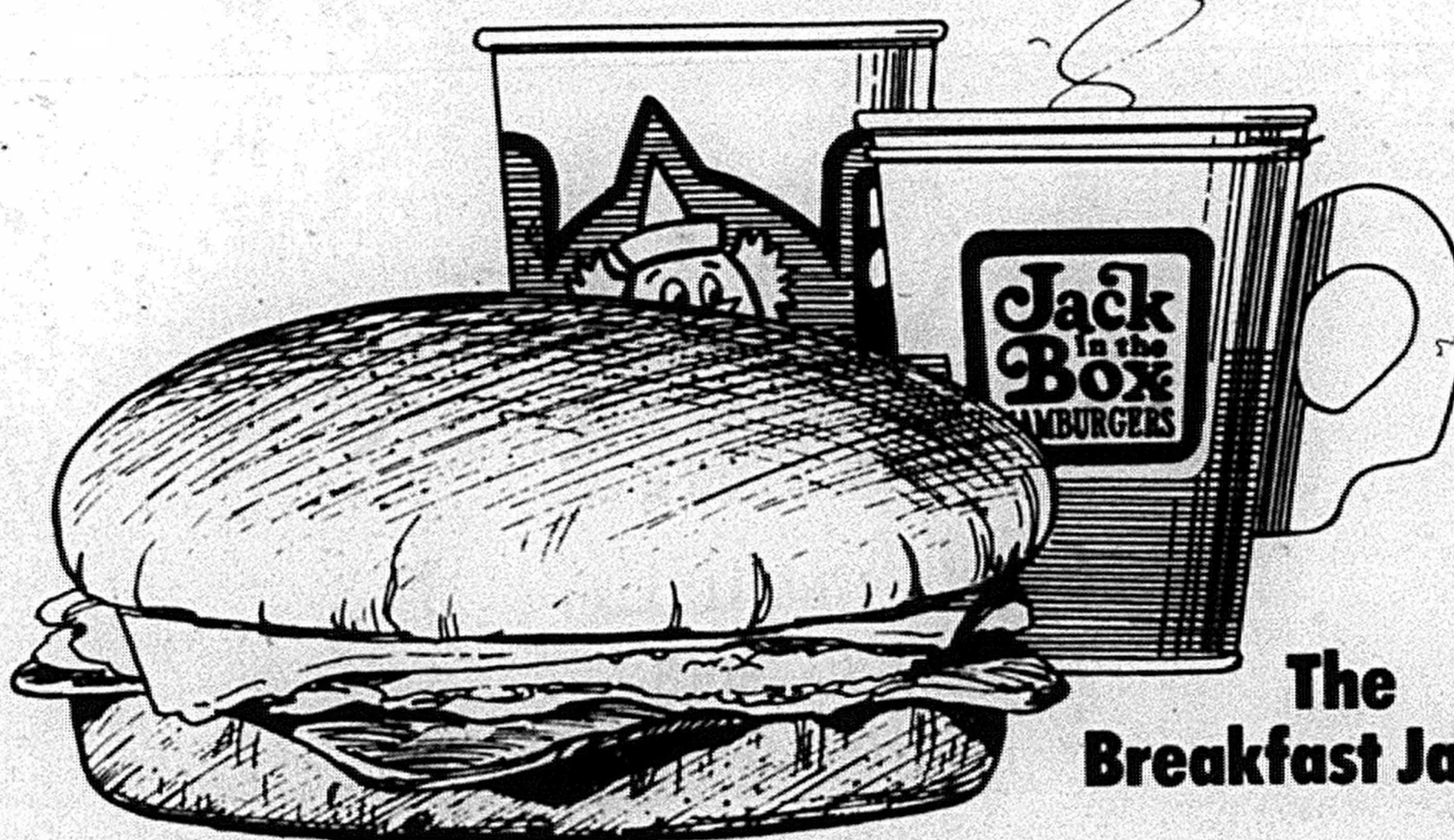
With character names like Peter, John, and Judas who's duty it is to follow the boss, the play can easily be seen as symbolic of Judas' betrayal of Christ to the Roman officials. But the play can just as easily be viewed as symbolic of the selling out of underworld leaders which happens every day. Whatever symbolism one wants to attach to the play, Judas, in a long speech near the end of the play, sees his situation as a repetition of a boyhood experience in which he was beaten up by two teams one day while in the gym. Suddenly the setting of an abandoned gymnasium and the entire action of the play take on added significance, and we instantly understand that Judas equates the coach who did not break up the fight with God. It is no surprise that Judas is driven to despair and suicide in the end.

Looking at the play as a whole, it is a gem of ironic contrast and mood construction. Iredynski paints a frightening, yet very possible, way of life in the future. The Christopher Newport College Players' production of 'Farewell Judas' adeptly accentuates the moods and the ironies the playwright strove to express.



Despair finally drives Judas (Steve Cupp) to commit suicide by hanging himself. The girl (Carla LaDell) and the Commissioner look on dismayed. (Photo by Lyon)

When you're up early or up late.



The Breakfast Jack

Try our refresher course.
The Breakfast Jack. A deliciously different ham, egg and cheese sandwich.
Pure orange juice before.
A cup of coffee after.
Even the price is refreshing.



Fox Hill Rd. at Willow Oaks Shopping Ctr.
Denbigh Blvd. & Oriana

Soccer Team ends season with one win in four games, Winter League plans being made

by Faith Ann Gibson

In an end of the season wrap-up for the CNC Soccer Team, the last four games resulted in two losses, one tie and one win. All four games were away.

In the St. Andrew's vie, the halftime score was 4-0. CNC rallied in the 2nd half with two goals from Roland Reeves and Alex Granger. The final score was 4-2 in favor of St. Andrew's.

When CNC contested North Carolina Wesleyan, the halftime score was 1-0 in favor of Wesleyan. In the second half, Alex Granger equalized the score with a cross from Roland Reeves. The winning goal was scored by Andre Bell with a devastating penalty kick resulting from a Wesleyan handball. The final score was 2-1 in favor of CNC.

The halftime score of the Virginia Wesleyan game was 3-0 in favor of Wesleyan. CNC made only one goal with Harry Calvert scoring and the final tally was 4-1 Wesleyan's favor.

The final score in the Radford game was 1-1, but the halftime score was 1-0 with Radford in the lead. Andre Bell scored CNC's point during the second half with a penalty shot to the left of the keeper. Radford was awarded a penalty kick that would have put them in the lead, but due to a tremendous save by CNC's goalie, Kenneth Hogge, the score was not altered.

At the present time, the CNC Soccer Team is considering whether to operate as an independent or join the Winter League which is made up of about 20 teams in the area of Tidewater. Winter League

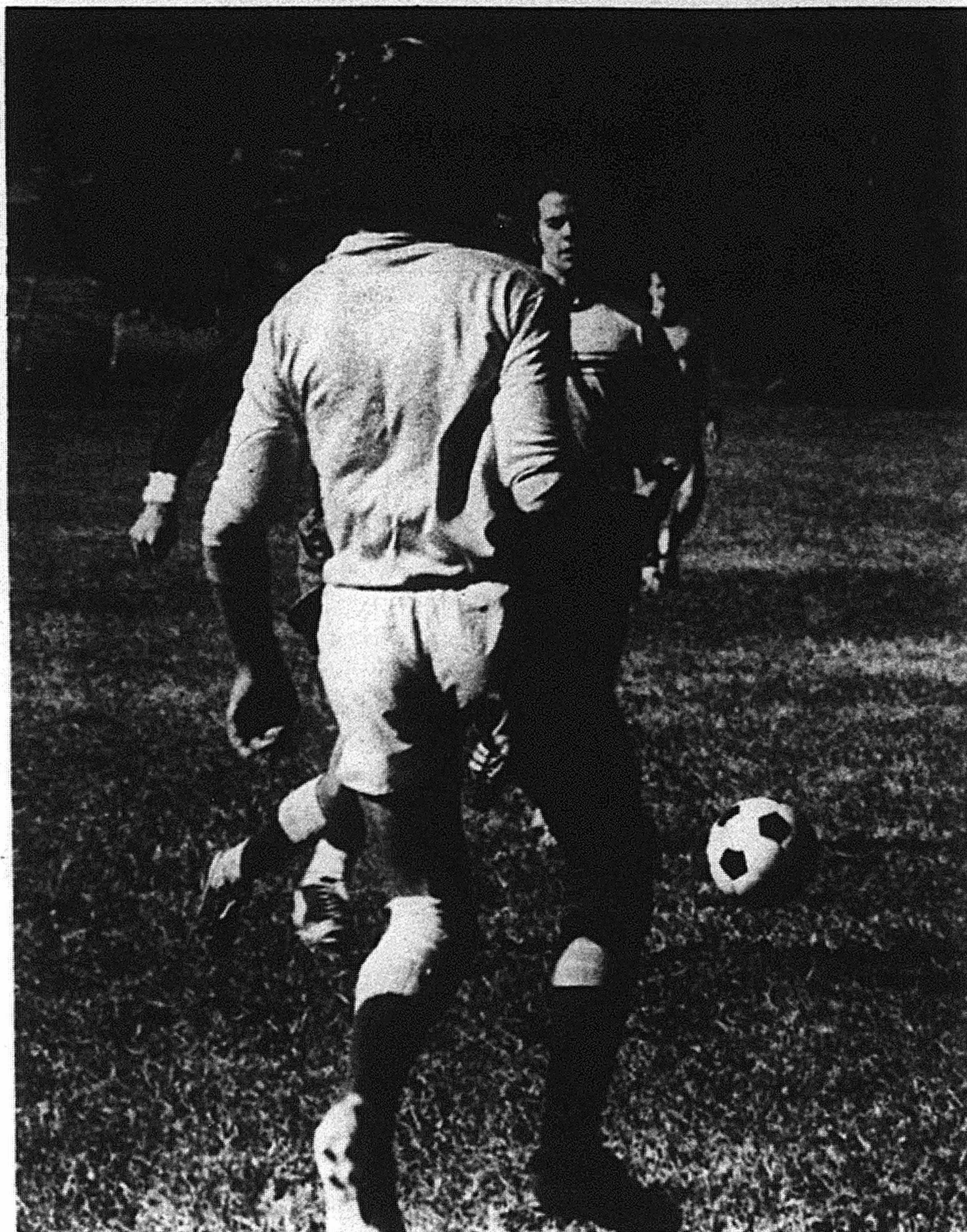
teams include Kecoughtan, Langley, William and Mary, Apprentice, plus the Norfolk teams.

Generally the competition in the League is good, but CNC Coach Sneddon does not wish a union with the League since as an independent, CNC could play teams from Richmond.

A big problem this fall has been organization. Pick up in soccer, or expansion and development, is difficult.

Another problem the team faces is that it does not know how much money it will receive, and it costs up to \$30 a game for referees, not to mention other expenses.

Even so, prospects for the next season are better since Joe Ames, a stalwart striker last year, will be returning again this spring, and goalie Ken Hogge is gaining experience. Other acquisitions include Andy Dawson and Tom Hart, a transfer from TNCC.



CNC Soccer Team battles hard in final games of season, but to no avail as they added only one more victory. (Photo by Green)

TRACK PRACTICE UNDERWAY, NEW RUNNERS BEING RECRUITED

Track practice is now underway for the C.N.C. Track Team. Students interested in competing on the Indoor or Outdoor Team should contact Coach Brooks at Ratcliffe Gymnasium any afternoon at 3:30 in the Track Coach's office, room 132. Track is open to anyone interested in competing for C.N.C.

All students interested in competing for the C.N.C. Indoor Track Team should attend the meeting at 3:30 p.m. on Tuesday, November 26, in

Ratcliffe Gym. Anyone desiring to compete, even though you have had no prior experience, should attend.

The following schedule has been set for the CNC 1974-75 Indoor Track season. The Indoor Track Team will partic-

ipate in the following meets: Lynchburg Area Track & Field Meet, Chesterfield Invitational, William and Mary B Team Meet, VMI Relays, State Indoor Meet, Lynchburg Relays, and the VCAA Indoor Meet.

1974-75 CAPTAINS' BASKETBALL SCHEDULE

Fri., Nov. 29	Hampton Institute	Home 8:00
Wed., Dec. 4	Bridgewater College	Away 8:00
Fri., Dec. 6	University of North Carolina	Home 8:00
Sat., Dec. 7	Greensboro College	Home 8:00
Tues., Dec. 10	Virginia Wesleyan College	Home 8:00
Fri., Dec. 13	Eastern Mennonite College	Home 8:00
Sat., Dec. 21	Southeastern University	Away 8:00
Sat., Jan. 4	Southeastern University	Home 8:00
Wed., Jan. 8	North Carolina Wesleyan College	Away 8:00
Sat., Jan. 11	Radford College	Away 8:00
Wed., Jan. 15	Virginia Military Institute	Away 8:00
Sat., Jan. 18	Methodist College	Home 8:00
Sat., Jan. 25	St. Andrew's College	Home 8:00
Tues., Jan. 28	Lynchburg College	Away 8:00
Fri., Jan. 31	St. Andrew's College	Away 8:00
Sat., Feb. 1	Methodist College	Away 7:30
Tues., Feb. 4	Virginia Wesleyan College	Away 7:30
Fri., Feb. 7	University of North Carolina	Away 7:30
Sat., Feb. 8	Greensboro College	Away 8:00
Wed., Feb. 12	North Carolina Wesleyan College	Home 8:00
Sat., Feb. 15	Lynchburg College	Home 8:00
Mon., Feb. 17	Eastern Mennonite College	Away 8:00
Wed., Feb. 19	DIAC Tourn. (Quarter-Finals)	TBD TBD
Fri., Feb. 21	DIAC Tourn. (Semi-Finals)	Home 7 & 9
Sat., Feb. 22	DIAC Tourn. (Finals)	Home 8:00

THE CAPTAIN'S ROSTER

Doug Baggett (Sr.)	Phil Lawson (Jr.)
Kyle Boykins (Jr.)	Tommy Kilpatrick (Sr.)
Steve Brown (Soph.)	Eddie McSweeney (Soph.)
Sherwin Green (Jr.)	Malcom Scott (Jr.)
Bill Hopke (Soph.)	Mike Small (Fr.)
Dave Holley (Soph.)	Mike Tallon (Sr.)
Dave Hutcheson (Jr.)	Bob West (Jr.)
John Ireland (Fr.)	

STUDIO
of Hair Imports
His & Her Master Haircutters

Unisex Haircutters
BOB, PATTY, ARNIE
1102 W. Mercury Blvd.
Riverdale Plaza
826-0025

\$5.00 PANTS

FOR GUYS & GALS
All Styles. Colors.
Values to \$20.

Plus:
Corduroy Jeans
\$8.97 To \$10.97

Mini-tops

PANTS AT A PRICE

Warwick Denbigh Shopping
Center in Newport News

Coach Vaughan Previews The Captains' Season & Schedule

by Doug Ferris

Even before I got a chance to talk to Coach Bev Vaughan last week, I had to wait a moment so that he could see to the needs of one of his players. I didn't mind the wait for it showed me that Vaughan was more than a mechanical basketball coach who switched his players on and off when necessary.

The tall, rowdy faced coach was not a new sight or even a new personality from when I first met him over two years ago. He sat behind his desk and answered my questions in the same mild yet strong mannered way as he has always done when we have spoken. The only differences in this meeting were the subjects we discussed.

First Vaughan recapped the reasons why we have now joined the N.C.A.A. "We're still in the Dixie Conference, but now we are part of the N.C.A.A., Division III. As opposed to our position on the N.A.I.A. we will only be facing colleges which do not offer scholarships for athletics, while at the same time being less expensive than the N.A.I.A."

Vaughan stressed the point that the team must do well in every game to be considered for an "at large" playoff berth. The N.C.A.A. must recognize first that CNC's basketball schedule is a rough one, and then consider the team's performance before any playoff decisions are made.

The obvious can not be denied. Opening against H.I.

on November 29, with the added obstacles of V.M.I. and Southeastern University, the season will be difficult.

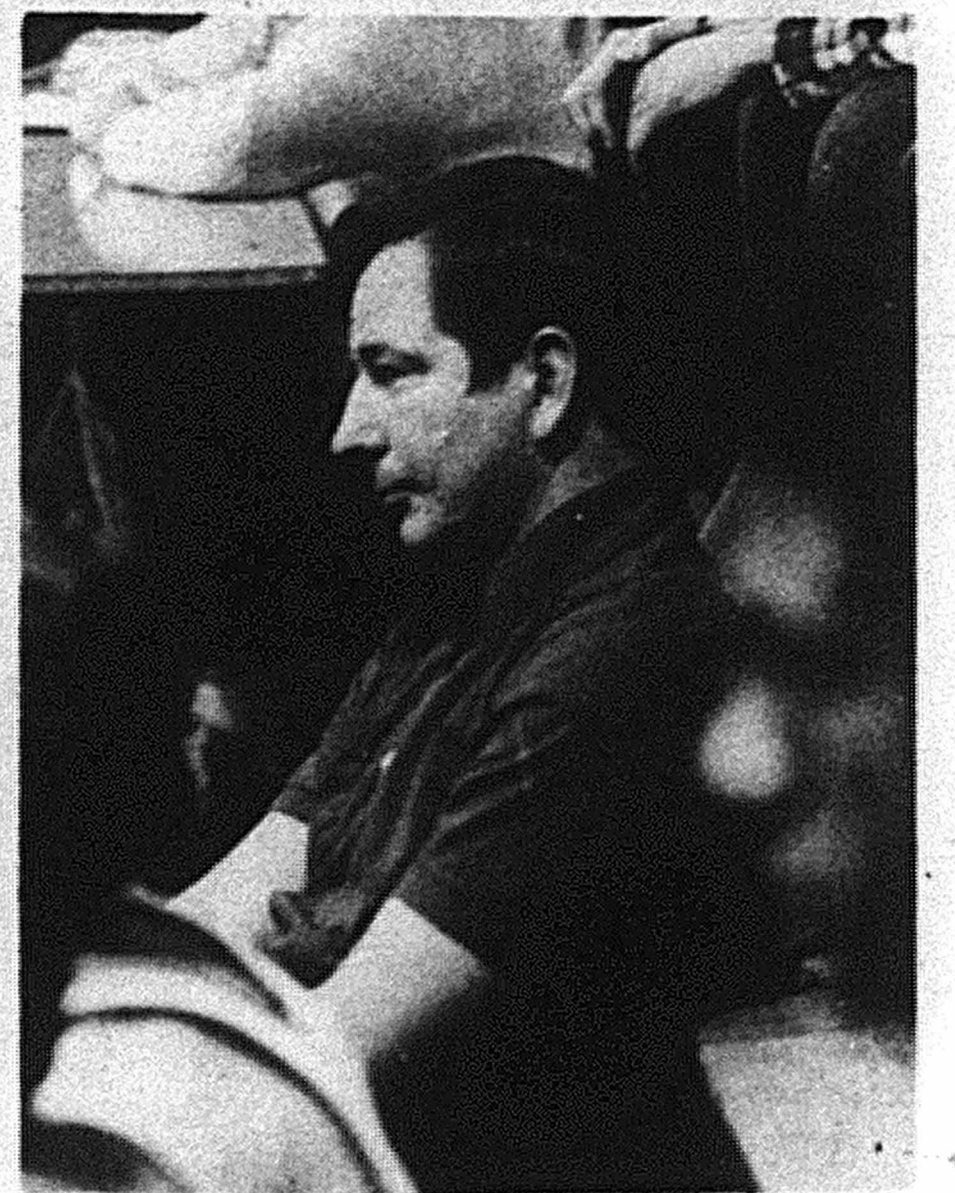
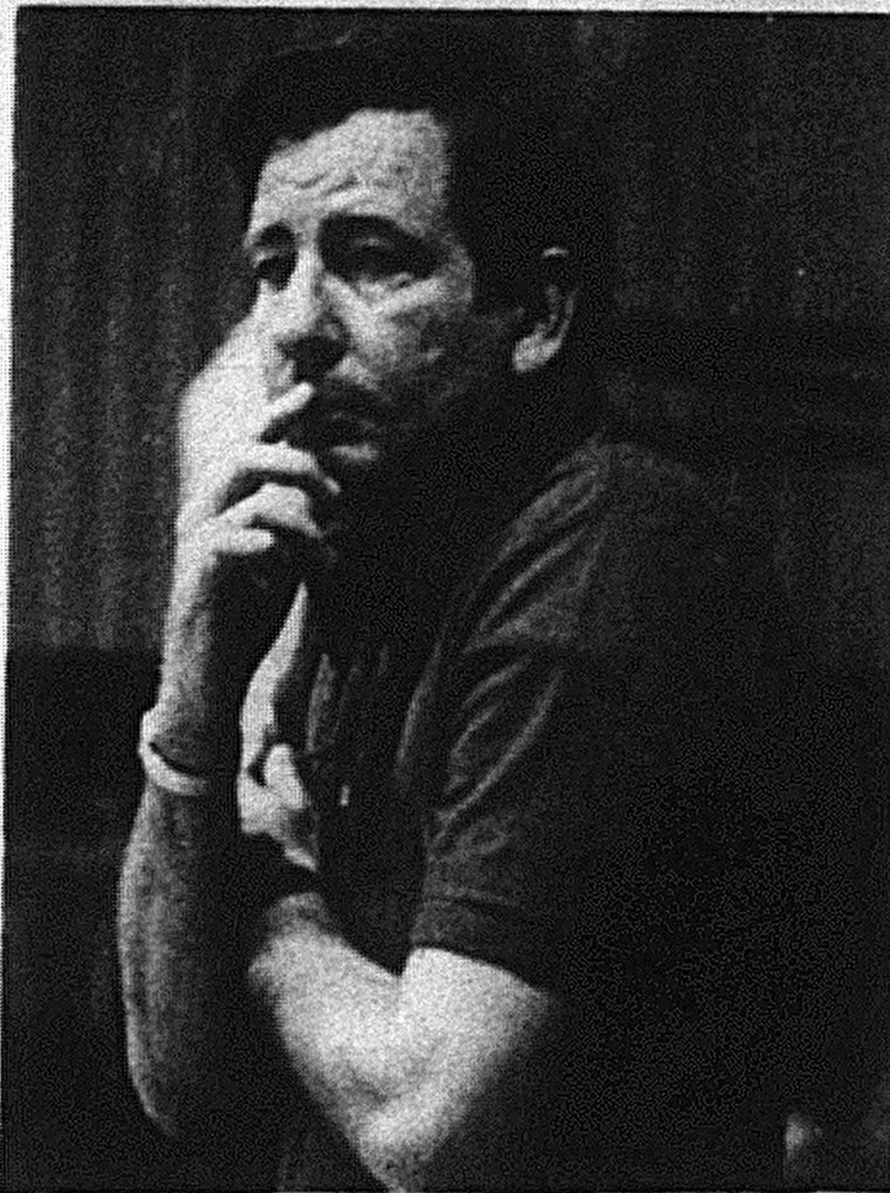
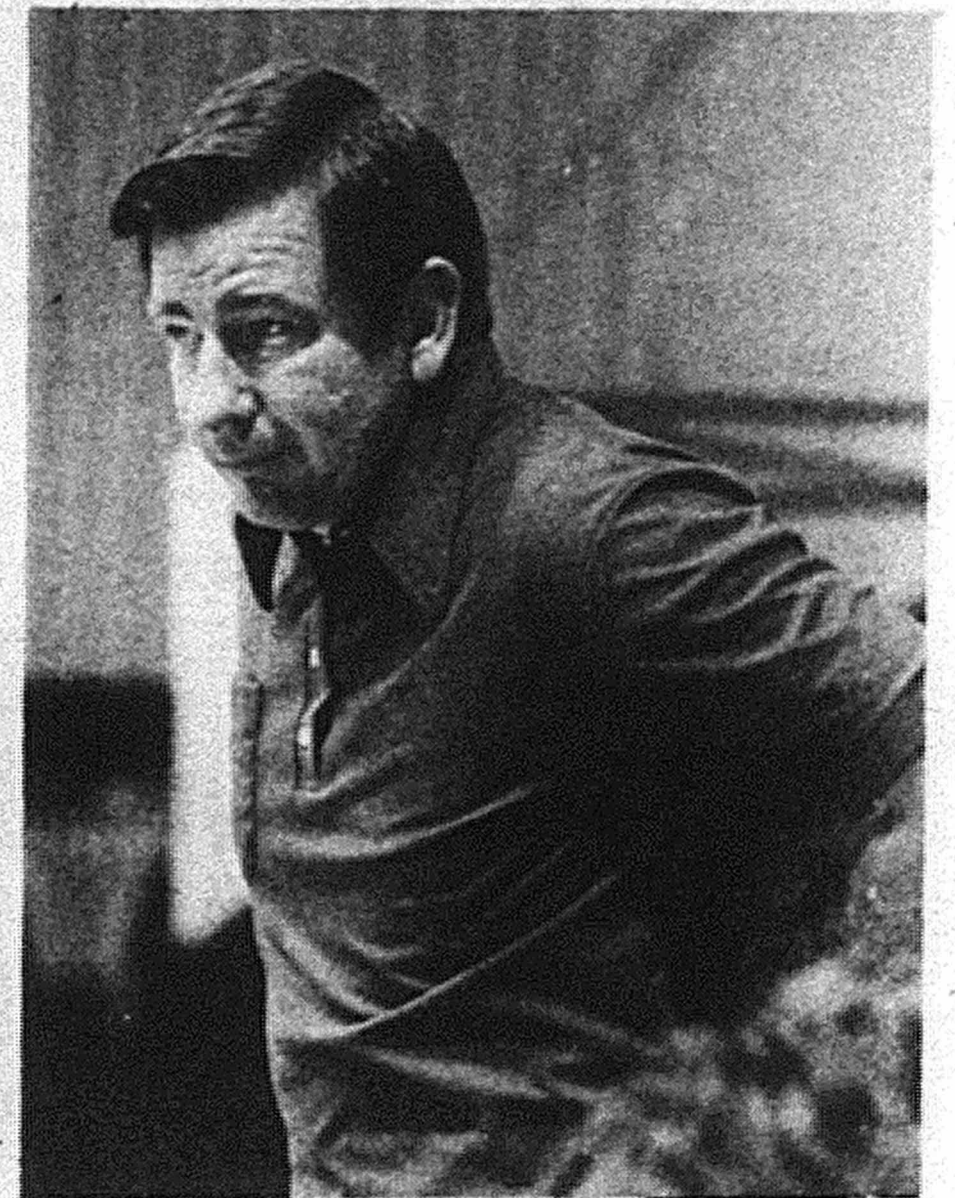
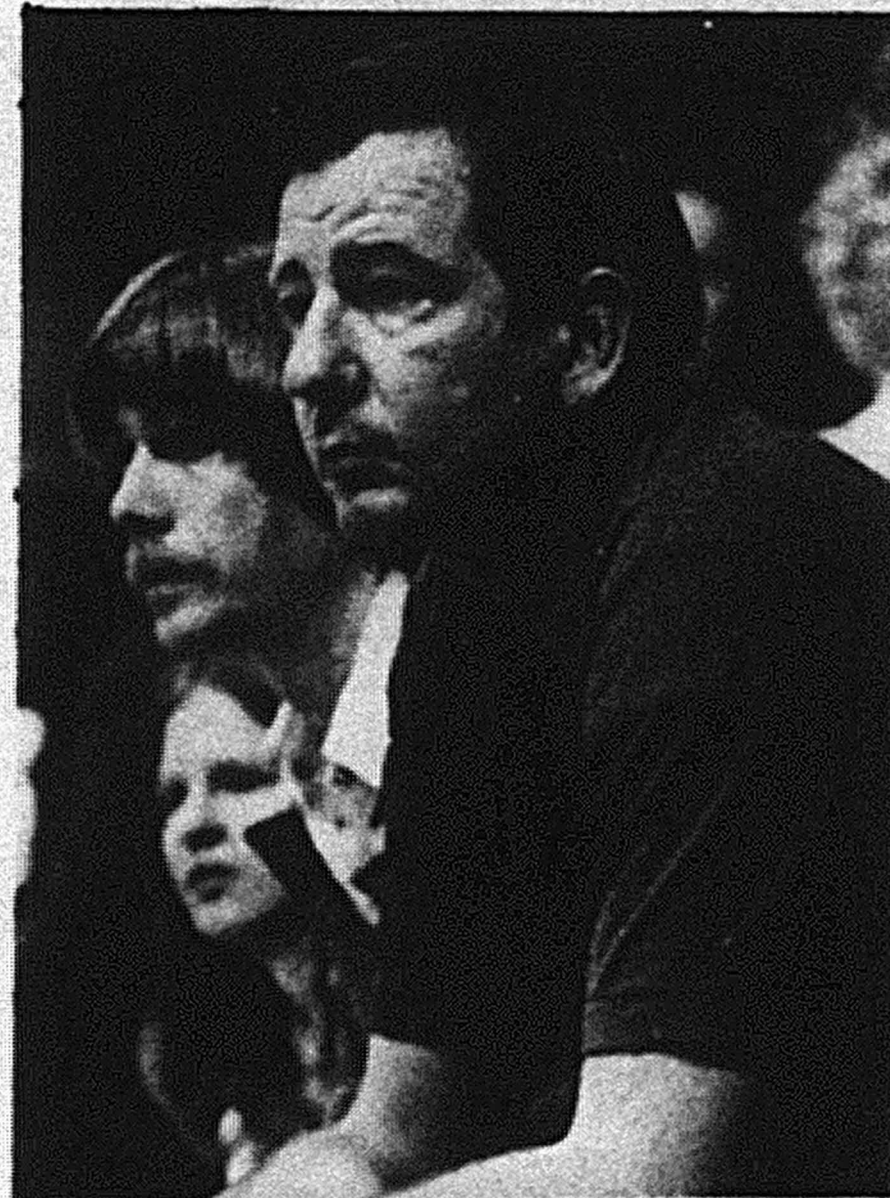
"We have never played either Southeastern or V.M.I. but I suspect they will both be tough." Continuing on these two teams Vaughan said, "Southeastern University is in the Washington D.C. area and with the talent available up there, they will probably be a strong team. V.M.I. is going to be a lot of trouble. They are on the same level as schools such as U.C.L.A. and Notre Dame."

Since Notre Dame, U.C.L.A. and other large schools have money to recruit players, I asked Vaughan about his recruiting program and whether the local schools support CNC with good players. He said "no" because CNC does not yet offer the type of campus most kids in the area want, one that is away from home and so CNC loses these players to other schools.

Vaughan's personal recruiting program throughout the state already surpasses the present recruiting efforts of the registrar. Reviewing the Captains' roster, it may be noted that all but four men come from the immediate area.

The players who come to Vaughan "Owe us nothing and we have no hold on them. All of them are playing because they want to win and be part of the team. In the case where scholarships are offered, the game becomes more of a job than a sport."

Vaughan admits that he does not have any blue chip prospects coming up from the high-school teams, but those who do come have a desire to play the sport. Noting the performance of juniors Sherwin Green and Dave Hutcheson, Vaughan stated that they, like the others on the team in past years, have worked hard for he spends a lot of time on the fundamentals and primary concerns of the game. He did say that Hutcheson and Green would probably be big



Something wrong, Coach? At Friday night's scrimmage against Norfolk State, the atmosphere was friendly, but Head Coach Bev Vaughan seemed preoccupied with the score and his team.

(Photography by Lyon)

factors in a winning season this year.

A couple of things that he tries to instill in his men while teaching them the game are how to get along and communicate with each other.

"Even though it is important, I have never taught them the rah-rah aspect of the game. They have just picked it up on their own. What is important is that they work together," he added.

Although no scholarships are offered for playing basketball at CNC, academics are still important to the head coach. Noting that grades come first, he does not allow any player to decide in favor of basketball over stu-

dies. It is either performance in the classroom first or no playing on the court.

"It should be a most interesting contest, but I fail to predict any point spread," Vaughan said of the season's opener against Hampton Institute this coming Friday.

With that and a handshake the conversation ended. Well maybe this isn't U.C.L.A. or Notre Dame, or even W & M, where the salaries and positions of head coaches are prestigious and the crowds untold in number, but one thing is certain -- R. Bev Vaughan as head coach brings this place alive during the basketball season, and for the men on his squad that is more than enough.

Business Machine World

838-7892

Typewriters Adding machines Calculators

Sales Service Rentals on all makes

Electronic pocket calculator

Texas Instruments

Unicom 201-2025N

Craigs

Columbia Scientific

5013 West Mercury Blvd.
Across the street from Newmarket Mall

TOP ROCK BANDS OF '74

VILLAGE
RESTAURANT & LOUNGE
9556 HARNICK BLVD.
NEWPORT NEWS, VA.

COME ON DOWN!

THIS WEEK: November 26-30
Wed.-Sat. Music by the
LEE TAYLOR BAND

Sun.: The Robert B. Mitchells'
'OLDIE BUT GOODIE' Show
& Dance (Twist, Limbo,
sing-along, & other contests)

SPECIAL Full Pound Large
Steamed Shrimp only \$3.50

also SIZZLING STEAKS, PIZZA, STEAMED SHRIMP

TIDEWATER'S ONLY COMPLETE BIKE & HIKE SHOP

Bikes

- ST. ETIENNE
- FALCON
- COVENTRY EAGLE
- COLUMBIA

SPECIAL

ST ETIENNE
10 Speed
Assembled with Warranty
\$119.00

SERVICE

Quality
Work Done in
2-3 Days

FRANZ'
Bike & Hike Shop
9816 Jefferson Ave.
Newport News

595-1777
Weekdays 9-9
Sat. 9-7

Hiking Equip.

- North Face
- Kelty
- Asente
- Jan Sport

SPECIAL

Register now
for Down Parka
to be given away
Nov. 30th



Captains hold their own in pre-season scrimmage against powerhouse Norfolk State

by Robby Duncan

Last Friday night, November 22, the CNC Basketball Team played host to C.I.A.A. powerhouse Norfolk State in a pre-season scrimmage. At first glance, it appeared that the Captains were no match for the much taller and stronger Spartans. By the end of the first 20 minute period, of which four were played, Norfolk State had won by a convincing margin of 10 points.

All through the period, Gene Cunningham proved why he has been an all-American choice at Norfolk State as he seemingly scored at will. The Captains, displaying a balanced scoring attack, did remain even with the Spartans until Cunningham erupted for the winning points of the period.

The Captains, however, turned things around in the second period behind the scouting and rebounding of David Hutcheson and Sherwin Green.

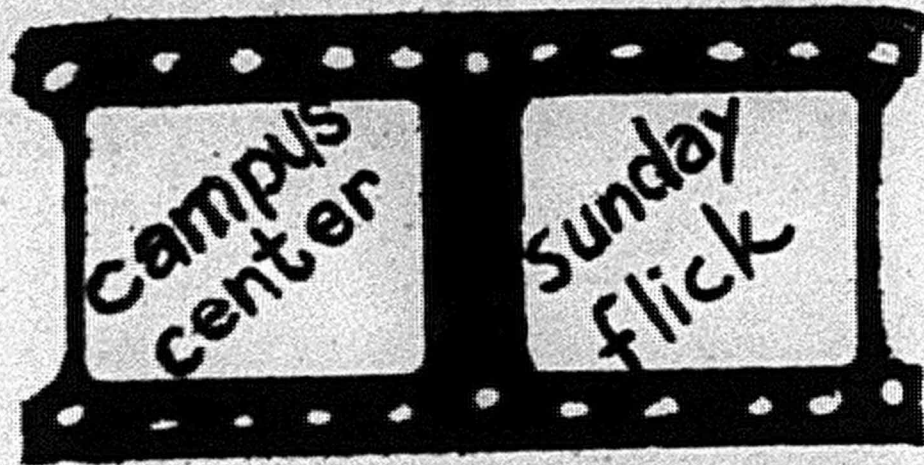
Assistant Coach Paul Babcock said, "At one point, we had good movement in our offense and Tommy Kilpatrick did a heck of a job on Cunningham. By the middle of the period, we had them playing our game." The Captains won by eight points.

ARCHERY TOURNAMENT SLATED

An archery tournament will be held Tuesday, December 3, 12:15 - 1:00 pm for men, and on Thursday, December 5, at 12:15 - 1:00 pm for women. It will be held outside and will be a Junior Columbian Round.

Entrees may use their own bows or those at school, but only bare bows will be accepted. If you are interested in participating or have questions, come to the intramural office or see Miss Seats in the gym.

The other two periods were more or less used for execution of plays by the two teams. The some 200 cheering fans, however, remained until the last seconds of the final period.



"Charly," starring Cliff Robertson and Claire Bloom will show Sunday, December 1, at 2:00 and 7:30 pm in the Campus Center Theatre.

For his sensitive portrayal of a man in his thirties with the mind of a six year old, Cliff Robertson won overwhelmingly critical acclaim and a well-deserved Academy Award for Best Actor. The man, through neuro-chemistry, achieves normalcy, even genius, only to learn that he will tragically soon revert back to his former state.

"The love, the dedication that went into the filming of CHARLY is evident in every aspect of the film. There is a becoming modesty about it - not the penny pinching variety, but the kind that purposely eschews big scenes or easy bids for sympathy. Similar restraint and sensibility marks both the direction and the writing. CHARLY represents experimentalism in the most positive sense of the word," said Arthur Knight in the Saturday Review.

Vincent Canby, in the New York Times, noted that "it's science fiction without gadgets, a horror film without thrills."

CASTAWAY

featuring

NIGHTLY ENTERTAINMENT

THIS WEEK AT THE CASTAWAY

Tues.	Nov. 26	Jerry Squires
Wed.	Nov. 27	John Keating
Thurs.	Nov. 28	New Morning String Band
Fri.	Nov. 29	New Morning String Band
Sat.	Nov. 30	Jerry Squires
Sun.	Dec. 1	Ike Hatcher and Company
Mon.	Dec. 2	Football on TV

try our sandwiches

Phone 596-9033

VIBES



by Dan Kooi

I have hesitated to review Jethro Tull's new release "War Child" (Chrysalis CHR 1967) as I am so aware of my bias in this group's favor. In fact, until the last album, you might have said I had a "passion" for Ian Anderson's type of music.

It was that last effort, "Passion Play," that turned me and so many others away from Jethro Tull. Now I find that Anderson and his people have taken some of where he once was, "Benefit," and a bit of where he ascended to, "Thick as a Brick," and delivered what is another album worth listening to.

I admit that if you listen to the first three cuts on side I, you are likely to never play this recording again. It seems that the Tull sound is either miserable or extremely good, mediocrity not being part of their repertoire. From selection four, "Back Door Angel," on through most of side II, it is the "extremely good" face that they show.

Besides having one of the most distinctive sounds around, courtesy of Ian Anderson's rather vocal flute and his fine acoustic offerings, Jethro Tull has probably the most thought provoking lyrics in music. On "Skating Away On the Thin Ice of the New Day," Ian asks:

Well, do you ever get the feeling that the/ story's too damn real and in the present tense?/ Or that everybody's on the stage, and it seems/ like you're the only person sitting in the audience?

The lyrics alone on this album can make it worth owning.

If you are a bit sated by all the standard music and believe you can follow one of the most erratic musicians on record, and if you enjoy really listening to what's being said, then "War Child" is probably for you. It is for me.

* * *

If you happen to be an old Wishbone Ash freak, please be careful of their new album "There's the Rub" (MCA Records, MCA 464). It seems that Martin Turner's brother Ted, who used to double up with Martin for some of the most beautiful paired leads on record, has left the group. The loss is all but devastating to what was the Wishbone Ash "sound."

On "Lady Jay" and "Persephone" you can be deceived into thinking that a repeat of "Argus" (Decca, DL 7-5347) is coming your way. "Argus," by the way, has always been my favorite Wishbone Ash release and should be owned by anyone who has an interest in the group -- and by a lot who don't.

"Persephone" is so mellow that it alone may make the album a required purchase for many. Most of the other cuts however are quite heavy, approaching the styles of such groups as Black Sabbath on "Don't Come Back" or maybe Uriah Heep on "F-U-B-B."

I'm not trying to imply that this is a bad album. In fact, the more I play it the better I'm adapting. Martin Turner hasn't lost a thing on his leads, and the addition of Laurie Wisefield, who attempts to pair up on lead with Martin, looks promising.

The only loss is Ted who I believe was Martin's little or "Baby Brother." There's a long cut on here titled F-U-B-B as I mentioned a moment ago. I wonder what the F-U stands for?

Watch for our
**Stay in the
Pink
'Specials'**

HONEY SHOP

Grant City, Hampton
Hilton Village,
1037 1/2 Warwick Blvd.

Do Your
Christmas
Shopping at Your
College Stores

The College Shop
in the Campus Center
and the CNC Bookstore

WE
GIFT WRAP
FREE!

**TELL OUR
ADVERTISERS
THAT YOU
SAW IT IN THE
CAPTAIN'S LOG**

classifieds

FREE ADS for CNC STUDENTS

The non-student rate for ads is 5¢ per word. Ads may be placed by bringing them to the Captain's Log Office in CC-225. Phone 596-7611, ext. 232.

For Rent

Roommate needed (female) to share apartment. \$90/mo. Glen Garden Apts. Good deal. 838-0631.

Room needed: bedroom wanted with additional room for study, or small efficiency. Female conservative, call Lee at 599-4845 btwn. 10pm-1am.

Room for Rent-Ivy Farms area. 596-9569.

For Rent - brick cottage, 3 rooms and bath, furnished, 1 bedroom, couples only, available November 1, no pets, 596-0891.

Room for rent - Hilton area, male student preferred. Private home. 596-2528.

Room for rent: male, kitchen priv. furnished-Denbigh area. Call 877-1958.

Room for Rent: ½ Bath, Kitchen privileges. Alpine Apts. 3 bdrms. \$100 - flexible. Margie 599-6867

Room for rent in private home close to college. \$65 month 595-3803.

For Rent--Townhouse \$145 all utilities, Denbeigh. 874-6412.

For Rent-Charming 2-room w/ bath apartment, utilities included, 91 Shoe Lane, Married couple only, no kids, no pets.

Room for Rent--w/out board, Hilton area, nice room with A/C. Mature female preferred. Call 596-6430.

Female wants apartment with same. Call Jane at 247-4883, from 12 - 2 pm.

FEMALE ROOMATE WANTED
Find and share apt. near school. Call Rita, 722-2543 9-5 weekdays.

Need Roommate - 2-bdrm apart. Deer Park area. 596-6733.

Room for rent - male student clean, sober, no smoking or drugs. 596-5094.

Wanted-Roommate to share two bedroom apart. Call 877-8001 ext. 40, 8:00 AM-4:30 PM, Jenny.

Autos For Sale

For Sale: '73 Honda Civic Automobile - FM stereo & tape Good condition. 36mpg, more interior room than VW. Call 877-1094 aft. 7, M-F.

For Sale: '69 Nova, 6-cylinder, 230 cub. in., auto trans, radio, heater, 22,300 actual mileage, economical, paint job new, \$1600. 596-7212.

FOR SALE: 1972 Yamaha XS2, 650cc motorcycle, 4,000 miles exc. cond., helmet and Bates leather jacket. \$900 takes all. Contact Dave Leslie, 898-6131 after 5 p.m. (M-F).

For Sale: 1965 Nashua Mobile Home 12' X 55' furnished or unfurnished. 205 Lyttle Dr. Warwick Mobile Homes. Call 874-3265 or 877-3274.

For Sale: 1968 FORD TORINO COUNTRY SQUIRE STATION WAGON 390V-8, manual trans., P/S, new tires, shocks, battery, etc. Good cond. Engine needs work. Priced for quick sale. 898-7646.

For Sale-1967 Mercury Cougar, Aqua finish, PS/PB, air cond., hi-performance 289 w/ chrome, bucket seats, black interior, tape player, runs good. Must sell cheap. 868-9125. Ask for Beefy.

For sale: 70 Mustang, rebuilt 302-2v, green with vinyl top, all power, auto, asking \$1,400 Call 229-5808 after 5:00 pm.

For Sale-1960 Cadillac Coupe de Ville, 2 dr. hardtop, blue color, running condit., call after 5:00 pm 599-4040, ask for Danny.

1971 Honda 500, excel. cond., 6300 mls., luggage rack w/ backrest. \$850 incl. helmet, 229-8539.

For Sale - 1972 Honda 100 in excel. condit., must sell at once, \$475 incl. helmet. Call 826-3451 between 3-6 pm.

For Sale: 1971 Fiat 124 Spt Cpe., 5 spd., 4 cyl., 46,000 miles, Moving overseas, must sell by December. \$2000. Call George at 877-7852.

For sale: 1962 Chevy Bel-Aire, green, runs but needs repairs, good for parts, \$75 Call 244-0833 after 3:30 pm.

For Sale-1969 Ford Ltd, PS/V-8, air, AM/FM stereo, auto, lux., model, new inspection, very good cond., \$995 - firm, 599-3150.

For Sale - 1964 VW Station-wagon, beautiful shape, needs minor engine repair. Call David at 877-6777.

Misc. For Sale

For Sale-1 pair hiking boots worn only once, excel. con., reasonable price. 596-4107.

FOR SALE: Diamond engagement ring, .28 carat, 6 prong-Tiffany setting of white-gold. Exc. cond., worn only 6 months. Cost \$240, will-sell for \$100, call 596-8060

For Sale - tape recorder w/ Telefunken 97L Magnetophon, 4 track, 3 speed, reel to reel w/ microphone & extra speaker, excel. condit. \$175. Call 877-6232 after 6 pm.

For Sale - portable TV, new tubes, good condit. \$45. Call 244-4154, 595-7419, 874-7158.

For Sale: Bundy Clarinet, Mazzeo model. Good for beginning band students. Good condition. \$75. Call 596-3890.

For Sale: Conn Clarinet - like new - call 596-7611, ext. 319 from 8 to 5.

For Sale: 30" Kenmore Elec. Range. Like new. Auto. oven, see-through door. Harvest Gold. \$100. Call 595-3287.

Services

Themes and term papers typed Call Mrs. Tracey at 727-2920 727-3643 or 851-8827.

Exper. typist w/ electric off. typewriter will type at home. Proofreading incl. 50¢ a page 826-2051.

Typing done at home. Call L. Phillips 877-2067.

Let me do your Typing, 75¢ a page, \$1 for a Thesis page, I supply my own paper/carbon, Linda Gurath 244-3714.

Typing, any style, 50¢ page, Carolyn Moody, 24 Ethel Dr., Hampton, 826-8061.

Stud service: one peach-colored miniature French Poodle. 2 yr. old. Needs female Cost: pick of the litter. Call 838-0807 anytime.

Wanted - babysitter for 5 yr. old, 1:30 - 4:30 pm on Tues. and Thurs. at my home in the Riverside area, transportation from CNC and home provided. Good pay. Call 595-9442 and ask for Anne.

Planning a party, meeting, or dinner? For help in planning, preparing, and serving, call M. Williams 247-9407.

Wanted

WANTED: Bass player w/ equipment to join established, acoustic rock group. Must have vocal experience. Dependable. Ready to travel. Call 595-6530, 244-4154, or 874-7158 (days).

Help Wanted - Male/Female to cook, wash dishes, and keep kitchen clean. Apply in person after 6 pm at the Castaway, 729 J. Clyde Morris.

Work Wanted: Roofing or Re-roofing. Expert installation at discount rates. 874-3265 & 877-3274.

Wanted --- Used microscope, good, but not expensive. Call 723-8193 (Pat).

Local United Methodist Church wishes to employ parttime Assistant in Christian Education with emphasis on youth work. Methodist background is desirable. 596-0154.

Free Miscellaneous

Free Kittens! 4 wks. old, 2 black & white, unusually beautiful eyes. 827-7274.

FREE KITTENS!! Call 727-2037 or 727-2236 M-F 8-4:30.

Puppy for Free: Brown & white 6 wks. old, in good health, Call 599-6722.

FDA NEARS DECISION ON DALKON SHIELD BAN

(CPS)--No one has ever known exactly how the interuterine device (IUD) works to prevent pregnancy. But the serious side-effects of one of these devices--the Dalkon Shield--are now a matter of public record: it has been responsible for 209 septic, spontaneous abortions and 11 reported deaths.

On June 27, 1974, the US Food and Drug Administration called a halt to the sale and distribution of the Dalkon Shield until it could investigate the matters further. Studies were conducted and hearings held in August for that purpose. The facts are in now, according to Mary C. Kelly of the FDA Press Office and a statement on FDA findings and conclusions will appear later this year.

The story goes that over 2000 years ago, camel drivers inserted stones in the uteri of their female camels to prevent conception during

long journeys. Not until the seventies, though, did the IUD come into wide use among women. Alarmed by Senate hearings on the dangers of oral contraceptives but still desiring birth control, large numbers of women in the United States gave the IUD a try.

During this time the Dalkon Shield gained popularity among women who had never become pregnant. Hyped as the "IUD that's changing current thinking about contraception" the Shield claimed to have a lower rejection rate than did other IUD's for these women.

The first Dalkon Shield ad, which appeared in medical journals, based its claims on a single study done by Hugh Davis, Shield co-inventor. He is also medical consultant to A.H. Robins Co., manufacturer of the device. The ad claimed a pregnancy rate of 1.1%, an expulsion rate of 2.3%, a one year continuation rate--that is, the number of women who continue to wear the device for one year--of 94%.

But the study was not conducted on women who had the device in place for one year. It was conducted on 640 women for 3,549 "woman-months of use."

Dividing woman-months by the number of women involved the average insertion time was only 5.5 months.

In a later ad the A.H. Robins Co. recommended that a patient use another form of contraception along with the Shield for the first 3 months of use. An irate doctor, testifying before the House hearings on Medical Devices, noted that this ad made claims based on a guarantee covering little more than just two months of time during which the Shield is the only form of contraception recommended.

While these ads were being published, A.H. Robins, in its files, had at least ten independently conducted studies showing the pregnancy rate as high as 4.3% and continuation rates as low as 41%.

David Links, Director of the FDA Office of Medical Devices, wrote at this time that beside "mild puffery," the ads for the device seemed "reasonable and accurate."

Meanwhile reports of heavy bleeding, painful insertion, uterine perforation, higher than expected pregnancy rates and pregnancy complications began coming in from women using the Dalkon Shield as well as other IUDs. A physician's survey by the US Center for Disease Control revealed that IUD use led to more than 3500 hospitalizations during the first six months of 1973.

Then, in May 1974, A. H. Robins sent letters out to 120,000 physicians advising them that six deaths and 36 septic abortions appeared to have been caused by the Dalkon Shield. By June reports of more deaths and abortions forced the FDA into action. Sale and distribution of the Shield were halted.

In July the HEW told its 3000 federally funded family planning clinics to stop inserting the Dalkon IUD. But it had already been phasing them out for the past 2 years because information from their abortion clinics indicated that the Shield had a higher pregnancy rate than had been advertised.

On August 21, the FDA opened a two-day public hearing to gather facts and professional opinions about the Shield. Physicians testified that 1 out of every 25 IUD pregnancies occur outside of the uterus and must be aborted. They added that 209 women had suffered septic abortions during Shield pregnancies and that 11 had died of the resulting blood poisoning.

Over the Labor Day holiday, members of the FDA Special

Advisory Sub - Committee met to assess info gathered at the hearing. But the final verdicts will not be out until later this year.

Because the FDA looks toward the IUD as a "device" rather than a drug, it hasn't the authority to require pre-market testing of the contraceptive. Neither can it require the reporting of adverse reactions associated with the device, the registration of IUD manufacturers nor the attachment of warning labels to each IUD package.

Once marketed, however, the agency can assume a regulatory function if it is capable of proving in the court that the product is dangerous to health when used as directed or is improperly labeled. But the FDA only takes action when it's sure it can win in court.

In the past twenty years the FDA has taken action against only one IUD. After 2 slow years just five days before the House Hearings on Medical Devices threatened to expose the Majzlin Spring as a dangerous device.

In California the Coalition of Medical Rights for Women is not waiting for an FDA decision. They've filed a petition with the California Department of Health and have called for a ban on all further sales and distribution of IUDs until they can be further tested for safety and the adoption of a regulation that would require the manufacturers to take all steps necessary to inform women of the potential dangers.

Patty Fulcher, chairperson of the Coalition has said, "Women are tired of being used as guinea pigs for untested medical devices sold at enormous profits by large drug companies."

CHRISTMAS CLOTHING & TOY DRIVE BEING SPONSORED BY A.K.Psi BUSINESS FRAT

Alpha Kappa Psi is sponsoring a clothing and toy drive for needy families in the area. The proceeds will go to the Social Action Center for distribution.

Please help by bringing in old clothing or old toys. Items which you feel may be outdated may make Christmas a little brighter for someone else.

Collection points will be provided in the Campus Center from November 25-27 and from December 2-6 for these items. Your help is appreciated.

CHESSE CLUB BUYS CHESSE SETS

The Chess Club is in the process of purchasing twelve chess sets. The sets will be used by any member of the Chess Club. The only requirement for joining the Chess Club is the desire to learn or to improve your chess game. The club meets every Wednesday at noon in CC-227.

'ENGLISH AS A PRE-PROFESSIONAL MAJOR' TOPIC FOR MEETING

There will be a meeting of English majors, prospective majors, and members of the English Department in Newport Hall, room 125, at noon on Wednesday, November 27.

Members of the English department will be introduced and there will be announcements about courses for the coming year. A brief talk by the chairperson of the department on "English as a Pre-Professional Major."

HELP WANTED!

THE CAPTAIN'S LOG

has openings for

ADVERTISING SALESMEN

-10% Commission on all sales

-Set your own hours

-Unlimited Opportunity

-An Equal Opportunity Employer

Call Diane McQuade 595-3992

or

Speak to Stuart Smith

or

Drop a note to the LOG

PRINTS

(Made To Order)

The Captain's Log photo staff will make reprints of pictures used in the paper.

Rates: 4x 5	\$1.00
8x10	\$2.00
11x14	\$5.00

additional copies: 4x5	.75
8x10	\$1.00
11x14	\$2.50

Original pictures taken on campus - \$5 for an 8x10; off campus pictures also available.

