

Abstinence  
not AIDS  
p. 5



Wes  
on romance  
p. 3



Thrills....  
Chills... ?  
p. 8



Christopher

Newport

University

25<sup>th</sup>  
Anniversary

# The Captain's Log

est. 1970



Volume 27 Issue 15

Newport News, VA

February 19, 1996

## Debating for CNU's future

Diamonstein keeps students posted on progress

By Eric Pesola, Staff Writer  
and Melanie Stokes, News Editor

Delegate Alan Diamonstein is working hard at the House of Delegates. He is working hard for you. On Feb. 15, representatives from the Student Government Association, Sigma Pi and The Captain's Log visited Diamonstein to hear exactly what he's working so hard over. Diamonstein, a member of the House of Delegates since 1967, is in his 15th General Assembly marathon. The legislation he works with everyday constantly affects CNU. From funding and tuition cost to achieving university status, Diamonstein has a say. The democratic representative from Newport News says that higher education and CNU top his list of priorities this year.

"Right now, I guess, the argument is on bonds. We're going to increase substantially the money going to higher education," Diamonstein said with a smile. He is the man responsible for all funds that go to state universities in Virginia. He chairs the subcommittee of Higher Education; therefore he is a very powerful man.

"We haven't been able to give to higher education what we should give to it. And not only that, we made you pay, because we let the tuitions continue to increase," Diamonstein said.

Over the last few years, tuition has been steadily rising. Unlike other states, Virginia has done little or nothing to curb this trend.

"We're going to try to make up for that, and we are arguing



IN COUNSEL Diamonstein consults CNU students Brooke McKee, Melanie Stokes, and Joe Klein (l-r) on his plans for the University's future.

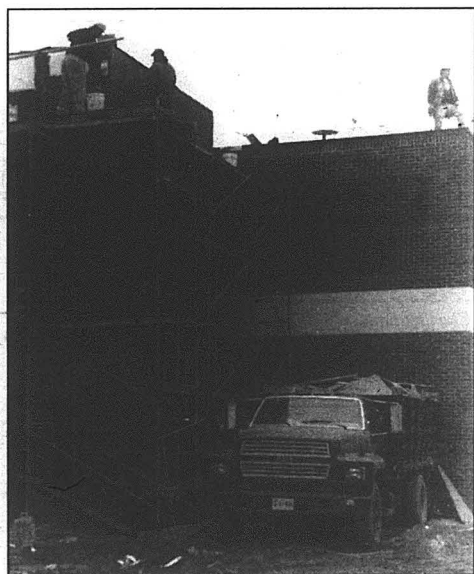
PHOTO BY ERIC PESOLA

[about a few] things--whether or not put a freeze on any tuition increase for a couple of years," Diamonstein said. "The only negative side is that when it is released in two years... we've got to look at the effects of that."

Another topic that Diamonstein feels strongly about is the student tuition contract proposal. One bill suggests making contracts with entering college freshmen to freeze their tuition costs for four years. While

Diamonstein sees advantages in the plan he also expresses logistical concerns.

"If we allow the signing of a contract with the entering class, and inflation and costs go up, it'll see Diamonstein page 2



Masonry workers rush to complete the outside of the science building. The weather has caused some problems with completing the project on time, but by in large poor planning played the key role.

PHOTO BY ROBIN HARRIS

## Just a little more time, please

Contractors already four weeks past deadline say it will take another three to complete

By Robin Harris  
Staff Writer

For months, students and teachers alike have anxiously awaited the completion of the new science building, but the Jan. 22 deadline came and went and the work still isn't complete.

The new target date for completion was Mar. 8, but after a construction meeting early last Thursday the date has been even further postponed. "I asked two questions," said Dr. Harold Cones, professor of chemistry. "How far we were to having heat applied to the building and how long after that until we could move into the building?" The answer he got was about another three weeks to heat and an additional six weeks after that before they could start moving back in.

The heating system is an

integral part in drying out the inside of the building so the interior work on the ceiling, walls, and floors can be completed. The contractor said they were having problems with the heating and cooling system and that the windows ordered for the building could not be installed, said Cones.

"They didn't do field measurements," said Cones. "They took the measurements they needed right off the blue prints, and when they got them here the ones they had made didn't fit the holes."

Bill Brauer, CNU vice president of finance, said he understands the difficulty in completing a project of this size. "When you undertake any construction project you expect certain delays," he said. "But in my opinion what we have experienced is unreasonable, and I want the doggone building."

Richard White, director of plant operations said the problem is largely due to breakdowns in communication. "The contractors weren't communicating with the subcontractors they hired to do certain jobs, and now they have run into problems," said White.

That contractor is the Newport News based Piland Corporation. Company Vice President and project manager Donnie Wolf said it's "difficult to say whose fault it is, but we're not sacrificing quality to get the project done."

Wolf said "things should have been done differently from the beginning." Difficulty in getting materials has really hampered the effort to stay on schedule. "By the time you get all the materials you need, you are four to five months into a six month job," said Wolf. That coupled with subcontractors see building page 2

Diamonstein continued from page 1 have to go on to the second, third and fourth year class. So we're trying to come up with some wording that'll make it fair," Diamonstein said.

By inviting CNU students to spend a day with him, Diamonstein was asking the campus to take notice of his delegation on the University's behalf.

Several college and university students work in the eight-story jungle that is the General Assembly building. Among them is CNU senior Will Phillips. He is a member of Diamonstein's staff, and is underwhelmed by the lack of support of Diamonstein's efforts for the school.

"CNU students are apathetic to what Diamonstein is doing for them," Phillips said.

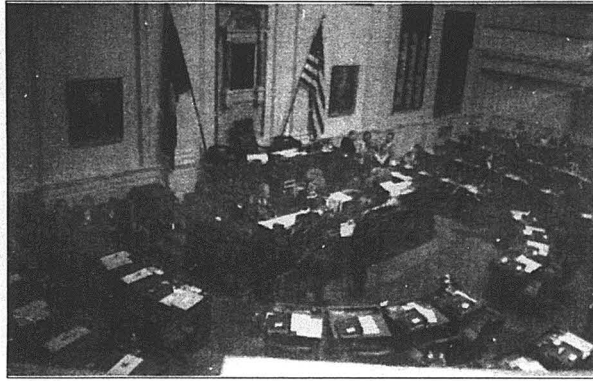
"Delegate Diamonstein is behind CNU 100 percent," Phillips said. Phillips works as Diamonstein's Newport News liaison three days a week, and works directly with Diamonstein in Richmond two days a week.

"If it weren't for Diamonstein there would be no Christopher Newport University. We would still be Christopher Newport College," Phillips said. "Diamonstein is fighting everyday for money to go to CNU."

The evolution of the Governor on the issue of higher education has been well documented. Capitol insiders and Diamonstein have also noted the significant changes. In the beginning of George

Allen's administration, the cash for higher education was cut a great deal. Now, the Governor has reversed his stance on funding for higher education. For Diamonstein, it's still not enough.

"The Governor put in about \$100 million dollars, which is peanuts compared to the needs. I put in a budget amendment for higher education at \$434 million, and



additional money I can't get," Diamonstein said. "We're going to try get as close to that [figure] as we possibly can get."

The money would be used for technology upgrades on campus, teacher's salaries and other important items. Another

topic that effects CNU directly is the Ferguson renovation.

Diamonstein said, "I'm going to try to get in the budget money for Ferguson, so they can take Ferguson and fix it up so that you all can use it. That's about \$4 million, 4 hundred thousand, as of right now. It does not mean that it'll be there tomorrow."

Diamonstein was in favor of the bill

General Assembly, Diamonstein plans to support the bill strongly.

Diamonstein concluded his talk with the CNU students and left for one of his many committee meetings. Sigma Pi's Chris McDaniels said this of the visit, "It was pretty cool. We got to talk to him about the policies and stuff."

"You don't realize how they talk about your area, but they really do," said Henry Struse, also of Sigma Pi.

Joe Klein summed up the meeting. "I was very touched that they have art work and things from our university up here at Richmond," he said. "It looks good on us, and it makes our area look good. Coming here and seeing this is like opening up a new window and seeing something for the first time. It gives you a better appreciation for things that are familiar and unfamiliar. I... I just was very touched by it."

The group ended their tour of the capitol with a visit to the House of Delegates floor. Delegate Diamonstein announced the group to the crowd. "Mr. Speaker, ladies and gentlemen, it gives me the great pleasure to introduce to you a group of students from the newest university, Christopher Newport University. If they would stand?"

As the students stood, the Speaker of the House said, "I sure hope Christopher Newport University enjoyed their stay here today, and I hope they keep an active eye on Delegate Diamonstein... it's very difficult to do."

building continued from page 1 "who aren't performing" the way that is expected have made small things "snowball and become a big problem," said Wolf.

The delays in the estimated \$1.3 million project are now penalizing the contractors themselves. Because of their agreement with CNU to have the project completed in mid-January, their failure to do so has resulted in them paying the university \$1500 a day for everyday they run past the Jan. 22 deadline.

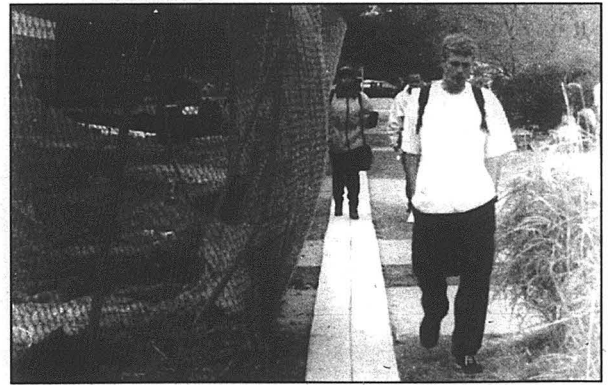
That may mean a recovery of some of the money spent on the project, but it does little to console students who have endured months of trailer classrooms due to the construction.

"There isn't any room to move around in there," said Brandi Loding, a senior biology major. "At least in the old building we had a place to sit down, in there we have to stand for the whole lab."

The four hour long stretch gets to senior Kelli Wirconske, too, but her concern is that she is missing something from her experience in organic chemistry. "We just can't do some of the experiments," she said.

Dr. Hammer, professor of the course, agreed. He said that they are operating with less space and equipment, and that it makes teaching the course "very difficult." There isn't proper ventilation in the trailers, and so some of the experiments are going to have to be cut or done on a "very small scale," said Hammer.

Cones said he understands how the students feel, "Some of our seniors are going to graduate without ever seeing the inside of the building," he said. "But it's going to be terrific if we ever get in there."



**DOWN ON THE BOARDWALK.** Students have been inconvenienced by more than trailer classrooms and noise, even getting to and from classes is difficult.

PHOTO BY ROBIN HARRIS

## The Captain's Log

Robin Harris  
Jonathan White  
Eric Pesola  
Elizabeth MacGahan  
Brian White  
Catherine Raines  
Melanie Stokes  
Jessica Shumake  
Alicia Stokes  
Ricardo Major, Jr.  
Melanie Stokes  
Chris Perry, Angela Jones,  
Karen DiGoigrio

Editor in chief  
Managing Editor  
Assistant Managing Editor / Graphics Editor  
Copy Editor  
Advertising Director  
Account Executive  
News Editor  
Features Editor  
Opinions Editor  
Sports Editor  
Arts & Entertainment Editor  
Photography Editor  
Staff Writers

### Corrections / Clarifications

The Captain's Log, the official student newspaper at Christopher Newport University, will be published on 24 Mondays throughout the 1995-1996 academic year and printed by North Star Publishing. News contributions are accepted by facsimile (594-7639) or in The Captain's Log office (CC223). Circulation inquiries, advertising rates and policies are available upon request by telephone or mail. The Captain's Log welcomes letters from its readers. Send to: The Captain's Log, 50 Shoe Lane, Newport News, VA, 23606. Letters may also be brought to our office, left in our mailbox on the second floor of the Campus Center, downloaded on CNU on-line or sent to our internet address: "clog@pcu.edu." Anonymous letters may be printed, but writers must sign the original, providing full address and telephone number for verification purposes. Students: please indicate your class status. If the writer is affiliated with an organization, that may be noted. The Captain's Log reserves the right to edit letters according to style, subject and length, as well as to refuse publication. For a letter to be considered for publication in the next issue, we must receive it by noon of the Wednesday prior to publication. Corrections/clarifications to The Captain's Log will be published in the issue following the error.

# Abstinence vs. Condoms: Which is more realistic?

By Alicia D. Stokes  
Opinions Editor

With an increasing number of teenage pregnancies and people contracting sexually transmitted diseases (STD's) and AIDS, what decision is today's average college student making about having sex? The media, through its sensual lyrics, erotic films and pornographic magazines appear to encourage the use of condoms instead of practicing abstinence. Is this the message that most college students are receiving, and if so, are they saying, "No" to sex all together, or are college students using protection?

Many parents and religious organizations are encouraging "Generation X" to take the safest route and avoid STD's, AIDS and unplanned pregnancy by completely abstaining from sex until marriage. On the other hand, more campus bookstores, 7-Elevens and vending machines than ever before are carrying condoms. As the sexually active see it, most people are going to engage in sex before they're married, so prepare them by making condoms available.

The opposition argues that if today's young adults stopped having sex, fewer would contract STD's or the AIDS virus. What do CNU students think?

Condoms are without question the choice of today's college students. This is mainly because young, vibrant people in college just aren't going to abstain. You're fooling yourself if you think they do. It's totally unrealistic to think most will say "No" to sex, so you ought to teach people to use condoms.

If the media encouraged the use of condoms more, I think that more people might abstain. But we need to recognize that more young adults are abstaining from sex today than they did in the '70's.

Nevertheless, it's unrealistic to think that the number of abstaining, young, unmarried college students will ever out number those who are sexually active.

*Teresa, sophomore*

More students today are using condoms. It is not realistic to expect high school or college students to abstain from having sex. The best choice is to abstain because from all I've heard and know, sex usually just complicates things. I mean everyone *wants* to do it, but if you can develop a strong enough will not to, it helps develop a strong will against other temptations too.

Personally, I don't believe in sex before marriage, that's not to say that it couldn't happen though. But abstinence does help people to develop high morals.

*Brian, freshman*

I think abstinence is a great idea and many do practice it, but using condoms is more realistic for today's college student. I prefer to practice abstinence. It makes my life easier and I have too many things to worry about already without having to worry about AIDS, STD's and unwanted pregnancies.

*Camille, senior*

In my opinion abstinence is the better choice. However, because I date, I prepare myself by bringing a condom. I think most students use condoms.

Abstinence is easier for girls to maintain because guys are more influenced by the pressure of their peers. Girls usually receive more negative publicity for being sexually active than do most guys who may even sleep around more. For instance, if a girl is very sexually active she's usually considered, a "skeeze" or a tramp. On the other hand, if a guy does the same thing or worse he's honored with the label of Mack Daddy or Player. . . .

... I believe that television plays a major role in influencing young adults to have sex. Most television programs today can't be seen without viewing a sex scene or two, and that's not even mentioning the number of TV talk shows that are all about who slept with whom.

*Duane, sophomore*

Of course I believe in abstinence because I believe that we should preserve ourselves until marriage. I think most college students are practicing the use of condoms. Since most college students are having sex, we should stress the use of condoms to prevent the spread of AIDS. But we should remember that condoms aren't 100 percent effective.

*DeAnna, junior*

Abstinence is more realistic because today young people do so many things without even thinking about their actions beforehand. So many people get drunk at parties and the next thing you know they're having sex. People who really take the time to think about it would probably choose abstinence.

People practicing abstinence don't necessarily have higher morals it's just their

way of life. I chose to use condoms because of all the STD's and venereal diseases. Besides, I'm too young to have a kid. But no matter what the media does or says, no matter what parents preach to their kids, people today (especially college students) are going to do what they want.

*Andy, sophomore*

To me, abstinence is more realistic because I know just as many people practicing it as are sexually active. It's very realistic to abstain for even more than a year. But on this campus CNU students are DEFINITELY sexually active.

I think people who practice abstinence don't necessarily have higher morals; they just have different standards.

*Jessica, freshman*

## THE LAST WORD

Choosing between abstinence and the use of condoms is each student's decision. However, as the risk of contracting STD's or AIDS steadily increases I'm astonished at the number of students who make no effort to adjust their sexual behavior. I encourage students to practice abstinence as long as they feel they can. When individuals decide to have sex I definitely advocate the use of contraceptives. Students having sex need to be aware that using contraceptives doesn't necessarily mean that they're actually having safe sex; they're still in the danger zone.

Lastly, are we really missing out on anything more than disease, pregnancy, embarrassment and regret when we wait to have sex? Somehow, abstinence just doesn't sound so unrealistic.

## Wes's World

### A new and improved Valentine's Day

By Wesley Cline  
Staff Writer

**Government Warning:** The contents of this column may be hazardous to your health and has been known to cause high, low and average birth weights in pregnant women.

As I stood in line at the local Super K-Mart, a table full of heart-shaped candy boxes caught my eye. I thought to myself, "Why would they have a table full of Valentine's candy when the day has already come and gone?" When I got up to the register, I asked the overly friendly (for 2 a.m.) checkout person (I think her name was Cathy) about the table of Valentine's candy. She told me that what I had seen were the Valentine's Day leftovers, which they were selling at greatly reduced prices.

Being someone who cannot pass up a bargain, I quickly tried to come up with a use for this old Valentine's stuff. As I thought others might have in their possession unwanted Valentine's things, I decided to share my ideas with my readers.

Instead of dedicating this holiday to those whom I love, I could use these candy boxes to remind all those who have broken my heart just how much they hurt me and how deeply disturbed their leaving made me. I could rip the heart-shaped boxes in half in front of each of them symbolizing

the broken  
was left with  
they walked  
out.

If after this  
little stunt I  
manage to avoid  
harassment  
charges, I could  
get my revenge in  
a more subtle  
manner. I could  
send my ex-girlfriends  
the candy,  
lulling them

into a false sense of security. I will, of course, be secretly hoping that they eat the candy and become fat. This is not as immediately gratifying as the first idea; but, in my estimation, it is far more satisfying in the long run.

I don't want to limit myself to leftover

heart that I  
when

candy. I think that it should be possible to find a florist with overstocked roses. I could buy any dead roses and send my ex-girlfriend's new love a little present. I wonder how he would appreciate a dozen dead red roses with a note saying they are from her.

Just to be sure that she isn't left out, I could send my ex-girlfriend a fresh bouquet with a card stating that they are from a secret admirer. The most effective way to do

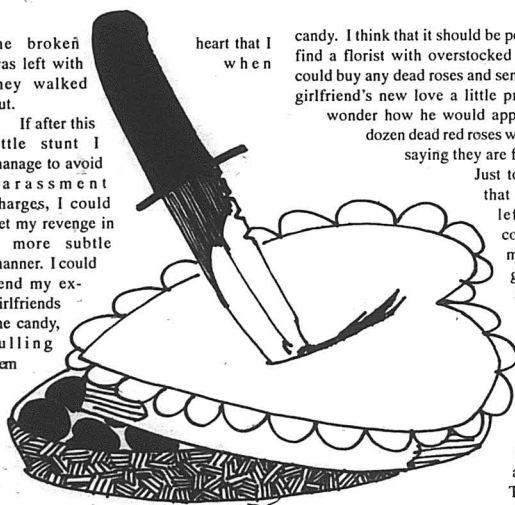
this is to plan the delivery to occur at the same time as when her new boyfriend is with her.

Valentine's treats that need no modification to be used in a new and cathartic manner are those little candy

hearts with messages like "Be Mine" and "Love You" on them. They are the hardest thing known to man. I even encountered one person who was using them to cut diamonds. I wouldn't even have to buy any more. I think I have about five pounds of this candy that have collected at my house over the years. Any unlucky ex-girlfriend unfortunate enough to receive and actually eat this candy would require thousands of dollars of reconstructive dental work. That ever-so-beautiful smile which first won my heart would be forever ruined. This would make it much harder for her to continue her evil, heartbreaking ways.

Valentine's Day can be more than a day to show one's love for another. It can also be a day to show others how much we love to get revenge. Remember that revenge is a dish best eaten cold. And, if you leave it long enough, it will spoil and can be used to give enemies food poisoning.

Remember, these ideas are not meant to be carried out. They are just a chance to laugh at how evil one can be if they lose all of their scruples. The above ideas could result in arrest and even jail time. If you choose to ignore these warnings, I cannot be held responsible for the outcome. It would only prove that you are just as sick as I am.





## Briefs

### Apply early for student financial aid Priority filing date approaching

Priority filing dates may not seem to be close, but processing time at the U.S. Department of Education can cause a student to miss CNU's priority filing date of April 1. In order to meet this priority filing date, you should submit your completed Free Application for Federal Student Aid (FAFSA) or the renewal FAFSA to the processor by Feb. 15. Processing of your FAFSA will take about four weeks. You, the student, will receive a Student Aid Report (SAR) from the processor (or an Acknowledgment SAR). You must provide us with the SAR (or Acknowledgment SAR) you receive from the processor and the completed 1996-97 CNU Application for Financial Aid. If both of these documents are received by April 1, you will be given priority for both money and processing throughout the year. You can complete the FAFSA before you complete your tax return by using estimated figures. Although it is better to have your tax return done before you complete the FAFSA, you should not miss the priority filing date by waiting for your tax return to be prepared. The only programs that will be available to students providing their forms after the April 1, 1996, priority filing date will be the Pell Grant, Stafford, and PLUS Loan programs.

### Scholarships Available

Several organizations are seeking candidates for scholarships and fellowships. For more information about any of these opportunities, contact Tom Morehouse at the Financial Aid Office (594-7278).

### Sons of Italy Foundation National Leadership Grant Competition

Merit based scholarship to students of Italian-American heritage who have demonstrated exceptional leadership and distinguished scholarship. Deadline for applying is March 15.

### Virginia Order Sons of Italy Foundation Scholarship

The purpose is to promote, encourage, enhance, support, and further the higher education of persons interested in Italian culture. This may include the study of Italian language, literature, music, history, the arts, politics, architecture, or any other subject founded or based upon Italian culture and influence. The scholarship is awarded annually as the Jeanne and John Felice Memorial Scholarship in an amount up to \$1,000. Deadline for applying is May 1.

### Virginia Press Women

A \$500 scholarship awarded to a Virginia college student interested in pursuing a communications career. Deadline for applying is April 30.

### Virginia Association of Student Aid Administrators Sue Deaton Ross Scholarship

This scholarship is available to a CNU student for the '96-'97 Academic Year because of Sid Dugas' service as outgoing President of VASFAA. The scholarship is to help deserving students and to honor a respected professional in the Virginia student financial aid community, Mrs. Sue Deaton Ross. Deadline for applying is April 1.

### Women's Forum Scholarship

To assist able and deserving women in achieving their substantial education goals. Deadline for applying is April 30.

### American Institute of Certified Public Accountants John L. Carey Scholarships

Available to Liberal Arts graduates pursuing graduate accounting study scholarships based upon academic achievement, leadership and future career interests. Up to five recipients will receive up to \$5,000. Application must be received by April 1.

### Adolescence in American Cinema

The C.G. Jung Society of Tidewater is sponsoring a lecture by Sue Crommelin, LCSW, Jungian Analyst, entitled, "Adolescence in American Cinema". The presentation will take place at 7:30 p.m. Feb. 23, in the Batten Arts and Letters Building, Room 104 at Old Dominion University. There is a \$6 fee to the general public.

For more information please contact Rita Ros-Planas, Publicity Chairperson at 498-3113.

### Professor to Discuss Crisis in Bosnia

Dr. Naum Panovski, Assistant Professor of Theater, will present a talk on the problems in his native land at 12 p.m. today in the Campus Center.

Panovski, educated in Belgrade and veteran of the Yugoslavian military, has entitled his lecture "The Many Facets of Yugoslavia's Disintegration." His timely presentation will include the historical, political, social, economic and cultural aspects of the fragmentation and collapse of his former homeland. All, he argues, explain the chaos in that part of central Europe, and all must be understood by the American public.

Panovski's lecture is the third in CNU's annual Dean's Colloquia Series and is free and open to the public. For more information, contact history department chairman Jim Morris at 594-7121 / 7567.

### Alice F. Randall Writing Center

The Writing Center will be presenting a 30-minute workshop Feb. 22 from 12:20 - 12:50 p.m. in MCM 212. The workshop is designed to help students write well-organized answers to essay questions.

The topics to be covered include: organizing answers before writing, deciding which type of question it is, and including a thesis statement. Handouts on these topics will be distributed.

## Coming Up...

Mon	11 a.m. Interview Seminar CC 146
	3 p.m. Grad School & You CC146
Tues	12 p.m. American Marketing Association Meeting Banquet Room of Christopher's
	12:15 p.m. "Mental Health and Wellness in the Black Community" Seminar CC 214
	2 p.m. Baseball
	9 p.m. Black Movie Festival "Uptown Saturday Night" Santoro Residence Hall Lounge 383
Wed	8 p.m. Tom DeLuca Hypnotist Christopher's
Thur	9:30 a.m. Resume/ Cover Letter Writing Seminar CC 146
	11:30 a.m. Soul Food Lunch Christopher's
	1:30 p.m. Job Search Seminar CC 146
Fri	9 p.m. "Soar Into Friday Night!" Dance Christopher's
Sat	6 p.m. Voices of Unity Choir Anniversary Christopher's

## Voices of Unity

Voices of Unity, CNU's gospel choir, will host the second Annual Gospel Explosion, Feb. 24 at 6 p.m. in the evening in Christopher's. This event is to help celebrate Black History Month and to celebrate Voices of Unity's fourth anniversary.

Voices of Unity has been an active choir since 1992, but uses this year as a starting point for when they were officially recognized as a choir. The choir includes members who are CNU students, alumni, and community supporters. At this time, the choir has about 30 members who meet every Friday at 6:30 p.m. in McMurrin's Lecture Hall. They participate in such events as American Music Week, Lighting

of the Christmas Tree Festivities, Holiday Happenings, Affairs of the Heart, Homecoming, and many Black History Month celebrations. On Feb. 18, they will be performing at Peninsula Marine Science Museum beginning at 3 p.m.

This year's Gospel Explosion is sure to be a great success. Last year people attended from all the Hampton Roads Area. There will be many choirs from the Peninsula and the Southside in attendance. This year we have also invited soloist acts including Maria Saunders from New Beech Grove Baptist Church and Rev. Gary More from Holy Tabernacle Church of Deliverance. This year's mistress of ceremonies is Sibyl Gible, producer of all morning shows for WAVY TV 10. The

master of ceremonies is Charles Pugh, reporter for WAVY.

Tickets for this event are \$5 for adults and \$3 for children and students with a current ID. For anyone who enjoys gospel music and fellowship, this is a must attend event.

For more information please call Carynn Lawrence at 594-8027 or Marion Carrington, Office of Minority Student Services at 594-7335.

## American Marketing Association

The CNU American Marketing Association will be holding a membership

meeting at noon Tues., Feb. 20, in the Banquet Room of Christopher's.

Aimee Mayer, associate sales manager of the Newport News Comfort Inn will be speaking.

You do not have to be a member of AMA to attend, everyone is invited.

## ACT I

Act I is proud to announce the return of hypnotist Tom DeLuca this Wednesday night. DeLuca will perform one show at 8 p.m. in Christopher's.

The show is free and open to the public.

## Club News

# The power to choose

## Speaker encourages students to take control of their behavior

By Eric Pesola  
Staff Writer

More than 60 of David Noble's friends have died. Not in Vietnam, or in a terrible plane wreck somewhere, it was AIDS that stole his friends. He is part of the Peninsula AIDS Foundation, who understand the reality of the AIDS virus, and how it can take lives.

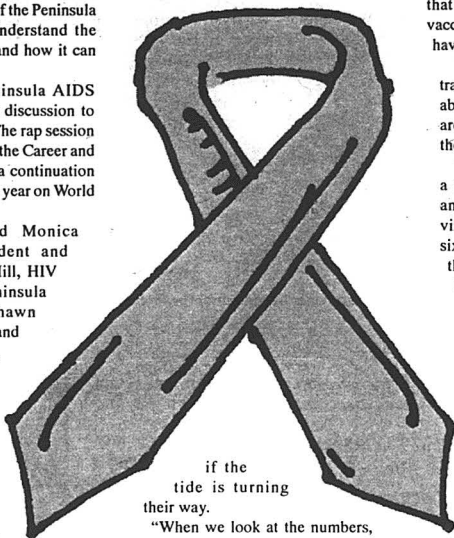
On Feb. 13, the Peninsula AIDS Foundation put on a panel discussion to address AIDS awareness. The rap session was sponsored by SGA and the Career and Counseling center. It was a continuation of a similar activity held last year on World AIDS Day.

The panel included Monica Earnhardt, a CNU student and registered nurse; Brenda Hill, HIV coordinator with the Peninsula AIDS foundation; Shawn Friendly, of CNU's ROTC and the Baptist Student Union, and Noble.

The group answered questions asked by the audience, and gave insight into their view. A person asked Noble how he can cope with the children today, and their attitudes about sexuality. He replied, "We try to get through to them that AIDS is a long and drawn out process. Young people have had the attitude that death won't hurt so bad, and they have held this view for a long time."

Noble has worked in the Newport News High School system supplementing the Family Life education. He has been

lecturing for the past few years to anyone who will listen. The struggle against AIDS is becoming more like a football game, where the educators are always checking the statistics, to see



"When we look at the numbers, we see them as a way of gagging our progress, in the overall battle against HIV," Noble said. "If we reach .001 a percent of the people, and they make the change... then it was worth it. One person has the capability of infecting 100 others, so anything I can do to help, I will."

Shawn Friendly looked at the issue this way, "You find that there's an invincible

attitude with military men. You feel like, 'nothing can hurt me.'"

The panel overwhelmingly agreed that the only absolute form of AIDS prevention that exists is abstinence. They all agreed that unless scientists develop a miracle vaccine, the only guaranteed weapon we have is not having sex until marriage.

Brenda Hill said, "As long as AIDS is transmitted by sex, we have to be realistic about it. We have to educate. If there are still people out there infecting others, then there's not a lot we can do."

The panel said that the virus can infect a person, and it can be passed on to another partner within 24 hours. The virus may go undetected for as long as six months in the body. The test is for the AIDS infected antibodies that the body gives off, not the virus itself.

These facts were stressed by the panel. They feared that the public might not be aware of these facts.

Once again they stressed abstinence as the only real protection.

"I'm more important than a 30-second orgasm," Officer Friendly said.

The panel concluded the discussion by handing out condoms to the audience. The lecturers all seemed pleased, but not too pleased. Brenda Hill ended with this, "People are not going to stop having sex. Man by nature is a sexual being. But, we have the power to choose."

The Peninsula AIDS Foundation urges anyone who is willing to volunteer to help in the fight, or anyone who would like general information to call (804) 591-0971.

## A view from the underside: The legacy of Dietrich Bonhoeffer

By Jessica Shumake  
Features Editor

On Feb. 12 the Hiddenwood Presbyterian Church midtown interfaith association presented Al Staggs. There was no admission price to this event, all were welcome, and light refreshments were served. Staggs, a reverend at Austin Presbyterian Theological Seminary at Austin, Texas, gave an amazing one-hour dramatic performance. Staggs conveyed the message of Christian piety, and brought the struggles of Dietrich Bonhoeffer to life. The impact of his skilled method acting hit home with the audience. As Rev. Carole Crumley said, "The power of the Bonhoeffer material combined with the wonderful characterization of him produced an evening we will long remember. We laughed; we cried; we went home edified."

The piece brought the audience into the prison cell where Bonhoeffer awaits execution for conspiring to kill Hitler. The intensity of his struggles are astoundingly conveyed as he questions evil, human nature, social structures and injustice. The answers to these dilemmas are all heard through the actions of one man who sees the necessity of maintaining providential convictions.

CNU student Jen Chaine said, "I liked the way he displayed complex ideas without elaborate props, the energy generated from within him, not from the scenery. In the play, Bonhoeffer is within



Al Staggs delivers complex message with simplicity and grace

his prison cell and tells of the profound influence of fellow Union Theological student, Frank Fisher, an African-American friend, has on his enlightenment to racism in America. Bonhoeffer expresses moral outrage against the established Nazi party and Adolf Hitler, and explains how that outrage led him to become a minister involved in a political movement in Germany during the Third Reich.

Jacqueline Gravatt of Newport News said, "I felt as if I finally got a real sense of who he was and was able to sort out more clearly his theology." Bonhoeffer had much to say about the church's own inordinate concern for its own security at

the expense of doing the work of God in the midst of oppression. Staggs forces the audience to feel the turbulence of Bonhoeffer's struggle with faithfulness to Christian ethics in the face of horrifying injustice.

As a prisoner, he learned what it meant to view life, history, and the interpretation of scripture from the perspective of those who suffer. Bonhoeffer's letters and journal were smuggled out by a prison guard with whom he quickly made friends, and that is how his message survives to this day. His commitment to his inner self and nature would result in his execution by hanging on April 9, 1945. One of Bonhoeffer's most important contributions to theology as a result of his courage and sincerity to the word of God is enhanced understanding. This man's experiences as a prisoner of the Gestapo continues to influence people all over the world. Dietrich's close friend and biographer, Eberhard, said of Bonhoeffer, "when he was silenced for good at age 39, he began to speak more loudly than ever before."

Actor Al Staggs earned an undergraduate degree from Hardin Simmons University, a Master of Religious Education degree at Southwestern Baptist Seminary and a Master of Theology degree from Harvard Divinity School. Secular audiences, civic clubs, colleges, and universities have all responded positively to this powerful dramatic stageplay.

## Oh Captain, My Captain



Dear Captain:

Can we get coffee dispensers alongside the soda machines in the buildings?

Juan Valdez, transfer student

Dear Juan:

According to Steve Pappas at University Housing, installing coffee vending machines at remote locations poses a significant problem because some plumbing is required for normal operation. He has made a note to discuss it with vending contractor, and agrees it is certainly a matter to consider when the contract comes up for renewal.

Dear Captain:

Where are all the study halls?

K.W.

Dear K.W.

I don't know if this is all of them, but there are two on each floor of the Residence Hall, as well as two student lounges. The Smith Library has four large (6-12 people) study rooms, and 10-12 individual study rooms. The Campus Center also has a lounge area where students can meet to study.

Dear Captain:

CNU students have free Internet accounts so why are there no instructors for the Internet?

Lost in Cyberspace

Dear Lost:

Computer lab assistants are always willing to assist CNU students in learning to use their Internet accounts. "Introduction to the Internet" (LBSC 295) was offered by the library for Fall '95, Spring '96, and will be offered again during Fall '96. Continuing Education is offering a class called "Let's Go Surfing the Internet." Call 594-7158 for details. The cost is \$69.

Dear Captain:

A couple of years ago CNU's English department offered an African-American Literature course. Why did they stop?

Culturally Concerned

Dear CC:

That course has been rolled into Multicultural Literature and is offered once a year at the graduate and undergraduate levels.

# 1996 Summer Session in London: English Garden Tour

CNU professors combine biology, botany and horticulture into rich cultural experience abroad

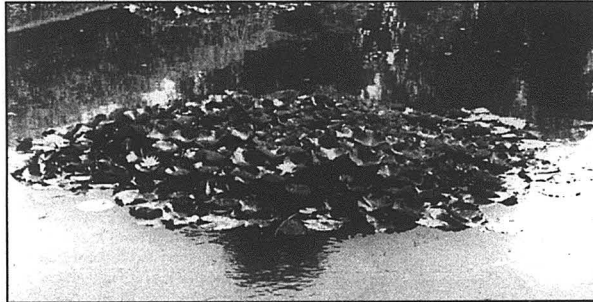
By Jessica Shumake, Features Editor & Melanie Stokes, News Editor

Study abroad this summer and earn three credits while touring the beautiful city of London and surrounding areas. English Garden design is the focus of this Biology 395 or Fine Arts 395 course. The seminar is led by former CNU president, Dr. Anthony Santoro and Dr. David Banks, CNU professor of horticulture and botany. Students will explore the history, horticultural content, and especially the beauty of English garden design. Trips to renowned English Gardens; including Sissinghurst Castle Garden, and Hampton Court Palace Garden Complex. Students will stay in the heart of London, three blocks from the British Museum and the James Madison dormitory style townhouse in Bloomsbury.

This will be the fifth consecutive year of trips started by Santoro. Last year there were over 24 students who accompanied the former dean while receiving 3 credits for this interdisciplinary adventure. Dr. Belle Pendleton will present a three-hour, slide illustrated talk on English art. They will also lead a morning trip to Colonial Williamsburg before departure to get a feel for English Gardens. A tea is planned before departure to the United Kingdom at the Santoro's residence. Students will watch videos, look at books, and discuss travel plans to prime for the excursion.

Dr. Santoro said that "we like to make a team effort to highlight any point's of interest so that participants get the complete experience. In years past, the trips have been a great success, and I am looking forward to this summer, which has the potential to be the best yet."

Sites on the itinerary include The Royal Botanical Gardens, Kensington Palace Gardens, Hyde Park, Sissinghurst Castle Gardens, Queen Mary's Inner Circle at Regents Park, Wisley Gardens, Queen Elizabeth Theatre, and Simpson's On-The-Strand. When students are not sitting in an English garden waiting for the sun they can surely get a tan while standing in the English rain, as the



**Blooming Lotus** on a lily pond is one of the beauties at Sissinghurst Castle Garden grounds.

song goes.

Those taking the class for credit rather than auditing will keep journals and make sketches recording the architectural aspects of garden design. Also, students taking the course for credit will be asked to write a 10 to 20 page paper on the aspects of flora and fauna. Plant and structural materials as they define spaces, provide focal points, and create lines will be studied extensively. The unity and contrast of foliage and floral repetition will also be considered.

The multi-discipline course will take students to museums and a theater performance, as well. Santoro will lead the group through the British Library,

*"Sitting in an English Garden waiting for the sun, if the sun don't come you get a tan from standing in the English rain."*

-The Beatles

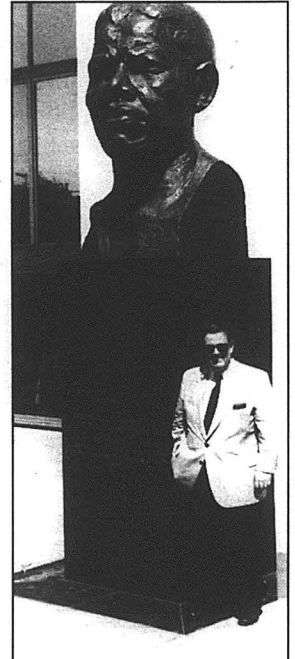
the British Museum, and the Museum of the City of London. On Aug. 4 the group will participate in the Queen Mother's Birthday

Parade in Hyde Park, where the Royal Horse Artillery Salute will take place. One student even met the Queen Mother in person a previous year.

The course costs \$1,975. A deposit of \$700 is required by Feb. 26. Costs include in-state tuition for 3 credits, an English tea hosted by the Santoros, round-trip airfare, private room accommodations for 11 nights at Madison House, daily breakfast, garden tours, an unlimited subway pass, museum admissions, theater performances, as well as a class banquet at Simpson's a London landmark restaurant.

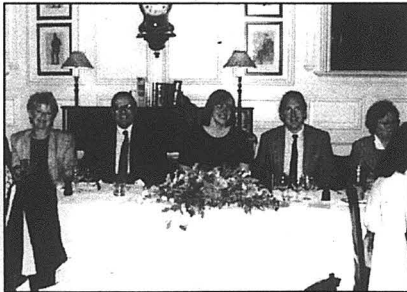
Contact Dr. Banks at 594-7127 or Dr. Santoro at 594-7709, 596 8141, or 594-

7371.

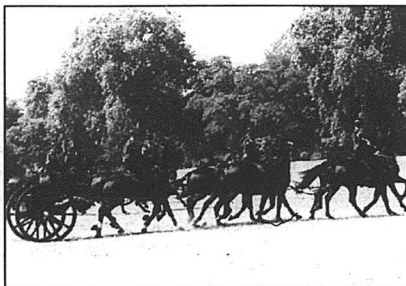


Dr. Santoro stands by the great bronze head of Nelson Mandela at the Queen Elizabeth Theatre in London.

PHOTO BY CAROL SANTORO

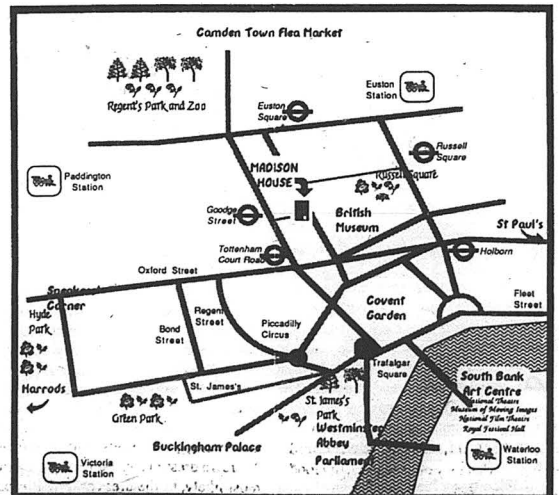


Carol and Anthony Santoro join Dr. Kara Keeling and Dr. Scott Pollard for a class banquet at Simpson's-In-The-Strand world famous beef joint.



Royal Horse Artillery Salute in Hyde Park to honor the Queen Mother's birthday, Aug. 4.

PHOTO BY DR. ANTHONY SANTORO



Map highlighting the area surrounding the renowned Madison Scholar House in the heart of London where Summer Session students and professors reside.

# Christopher's Celebrates Heritage with Jazz Concert

By Jessica Shumake  
Features Editor

On Feb. 9, Christopher's dining hall held a midday jazz concert that was enjoyable for all. The Minority Student Association and the Office of Minority Student Services sponsored this event. As part of an ongoing celebration to commemorate Black History month, Philippe Fields and the jazz band Quiet Fire played soothing tunes.

This treat allowed many to eat lunch while listening to the familiar classics by the greatest legends in blues. Quiet Fire played Duke Ellington

, Miles Davis, and John Coltrane. Cat in the Hat, a cover by Davis, was a highlight.

Jazz music is a tradition that is an inherent expression of Negro life in America.

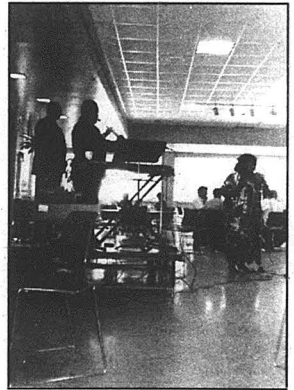
Jazz is an important expression of the 20th century. According to Wynton Marsalis of VHI, it is "the Black experience in America put into sound." Langston Hughes said it is the infinite sound of "the beating soul of the eternal tom-tom beating

the Negro soul, the tom-tom of revolt against the weariness in a white world, a world of subway trains, and work. The tom-tom of joy and laughter, and pain swallowed in a smile."

African American Heritage month is observed by CNU students and faculty throughout the month of February. Movie festivals, artist workshops, gospel performances, lectures, and soul food are just a few of the gifts from innovators of the past that contribute to present day American culture.



Quiet Fire plays soothing jazz for the lunch crowd at Christopher's while Philippe Fields sings the Blues. PHOTO BY JESSICA SHUMAKE



The spirit of triumphant jazz music trumpets melodies in celebration of the contributions of African-American Heritage. PHOTO BY JESSICA SHUMAKE

## Rave Reviews

Not Betty's  
10844 Warwick Blvd. tel. 599-4915  
open 11 a.m. - 11 p.m. every day

beer, wine, full bar, espresso & cappuccino  
\$5

Not Betty's is a young restaurant. It has the kind of energy and attractiveness reserved for the young. Restaurants are a sink or swim kind of business, and after only the three weeks since Jan. 22, Not Betty's is doing the backstroke.

On my first visit, the menu looked a little rough. I mean the actual paper, not the food, which looked wonderful. It looked like what it was - temporary. Curious, I ordered the quail, and was told quite frankly by my waiter that there was no quail to be had because it was lousy. This may sound crass, but truly, wouldn't everyone prefer not to have to eat the food before it is deemed unworthy?

Instead, he slid a steaming, heaping plate of excellent, mildly herbed, tender salmon over pasta in front of. It was wonderful, but the horseradish sauce, wisely served on the side, was a little hot and a little boring. I won't knock it, though. It was a good combination, and one I'd never tried before.

The menu, as it was, featured a lot of good food, carefully prepared, but nothing for the extremely adventurous palate. Nothing looked too boring, either, except for the small rib-eye steak, which hardly looks worth the trouble.

My waiter made another recommendation. For dessert we tried a coconut creation which was very like a creamy pie, but more gooey, sweet and sinful. The texture was like nothing else; it was a delicious confection.

The Chef Wesley Hunter and his staff have ironed out the wrinkles in the menu, which is just lovely. Nothing is over priced. Basically, what they offer is good, fun food, and well prepared.

The bar is a treat. It is fully stocked, complete with a terrific bartender. Not the stereotypical red-faced Irishman, but just



as witty and talkative. I had a craving for an unusual drink, one she didn't know, and she called around until she had the recipe. Instead of being annoyed, she was pleasant and considerate to my companion and me.

Not Betty's also features live music on weekend, in the form of piano guy Nick Caffackus. Someone called Robin Welch is scheduled to play there soon, so if this is a musician you like, give them a call. On Valentine's Day, they featured quite a romantic treat: a violinist.

The atmosphere is the forte, here. The staff, no doubt caught up in the newness as well as blessed with an attractive working environment are all so warm and enthusiastic and accommodating. Plus, I can't fail to mention the decor which really makes this place stand out. Customers step out of a mini mall in Newport News and into a hip, urban bistro. As near as I can tell, the only unifying theme is "not boring." There is a fake front door, complete with an awning, windows and a mailbox. There's a dress maker's dummy as a tribute, most likely, to the dress shop that used to occupy the space. My absolute favorite is the pair of barber's chairs set up like a shrine in the back of the restaurant.

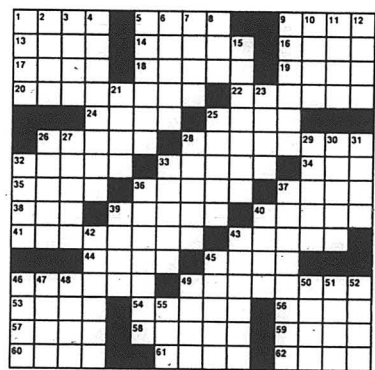
## The Crossword

### THE Crossword

- ACROSS
- 1 Ostentatious display
  - 5 Whirl
  - 9 Courage
  - 13 Always
  - 14 Borders
  - 16 Ore deposit
  - 17 Facility
  - 18 Surveillance
  - 19 Tournament type
  - 20 Synthetic materials
  - 22 Cheerful
  - 24 Orient
  - 25 Whitewall e.g.
  - 26 Waltz e.g.
  - 28 Alcoves
  - 32 Freight carrier
  - 33 Cash
  - 34 Pastry
  - 35 Fad
  - 36 Stories
  - 37 Created
  - 38 Frost
  - 39 Soft flat cap
  - 40 Gaited horse
  - 41 Omens
  - 43 Liquid measure
  - 44 Terminates
  - 45 Color
  - 46 Sense of taste
  - 49 Difference
  - 53 Employ
  - 54 Chair rung
  - 56 Reflected sound
  - 57 Fishing cord
  - 58 Binge
  - 59 Atmospheric hazard
  - 60 Girl
  - 61 Sea gull
  - 62 Stitches

### DOWN

- 1 Sound from a nest
- 2 Elliptical
- 3 Tableland
- 4 Pleasing bearing
- 5 Correct manuscripts
- 6 Public decree
- 7 Incites to action
- 8 Hawaiian garland
- 9 Light bulb covers
- 10 Large cord
- 11 Notion
- 12 Canvas shelter
- 15 Artificial channels
- 21 Short nail
- 23 Victim
- 25 Doctrine
- 26 Constellation
- 27 Boring tool
- 28 Parts for actors
- 29 Area
- 30 Downy sea duck
- 31 Prophet
- 32 Journey
- 33 Selling places
- 36 Proffers
- 37 Bed pad
- 39 Talent
- 40 Pub measure
- 42 Tantalizes
- 43 Shade tree
- 45 Photographic solution



### ANSWERS

FAST	SHOUT	POET
AMER	HOUSE	APSE
NATO	ENTER	LATE
SHAWLES	ROLLED	
DEPOSIT	REBUTTAL	
EVENT	GABLES	RIA
PATE	SLIDE	RISK
ODA	AMASS	BELLE
TELEVISION	CABLES	
NODS	WANE	
SPRING	BIRDLIKE	
ALLEG	EXUDE	LANA
REAM	NINES	EGOS
DADA	SIGNS	DOTS

- 46 Influence  
47 Continent  
48 Optical glass  
49 Heal  
50 Highest point  
51 Display  
52 Clothing  
55 Make a choice

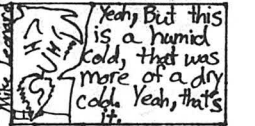
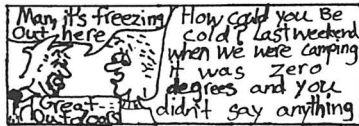
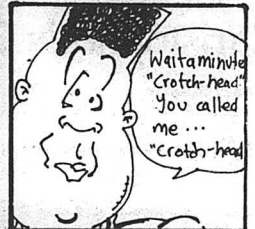
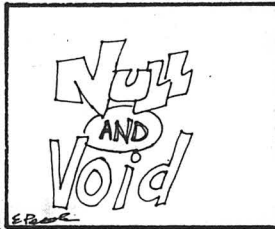


**RESEARCH INFORMATION**  
Largest Library of Information in U.S. -  
all subjects  
Order Catalog Today with Visa / MC or CDO  
**ORDERING HOT LINE 800-351-0222**  
or (310) 477-8226  
Or, rush \$2.00 to: Research Information  
11322 Ktaho Ave., # 206 A, Los Angeles, CA 90025

What Buddha was Really thinking...



Hmm... I can't wait until they invent T.V. Then I won't have to sit around and meditate all day...



## CLASSIFIED

\$7.00 per hour plus \$150.00 per month housing allowance. Largest rental service on the Outer Banks of North Carolina (Nags Head). Call Dona for application and housing info.  
1-800-662-2122

### Wanted!!!

Individuals, Student Organizations to Promote SPRING BREAK. Earn MONEY and FREE TRIPS. CALL INTER-CAMPUS PROGRAMS!!  
http://www.icpt.com  
1-800-327-6013

"The media the nervous system of a free society." - Newt

I scratch and claw at the doors of passion... and am rejected. The horny side wants funky--but my soul wants bebop! I yearn for a woman. If you are out there, dream, than love me! - Josh Webb (P.S. Nasty again next week, baby!!)

The Residence Hall Commission extends warm thanks to Dr. Webb, Mr. Dan Winters & the CNU Sailing Team for your assistance and the use of the sailboat for our joint float.

We would like to thank Michelle, Brooke, Kim, Cathy, Andrea, Amani, Dawn, Scott, Brian, Eric, Frank, and Teresa for all your help with our Homecoming Events & Float. - The Residence Hall Commission

2 SWF students seek female non-smoker to share furnished 4 bdrm. house in Hiddenwood. 5 minutes from CNU. Large Backyard, screened-in porch. \$200 a month + 1/3 utilities. CALL Melanie at 594-7169

### TEACH ENGLISH IN KOREA

Positions available monthly. B.A or B.S degree required. US\$18,500-23,400/yr. Accommodation & round-trip airfare provided. Send resume, copy of diploma and copy of passport to: Bok Ji Corporation, Chun Bang Bldg., 154-13 Samsung Dong, Kang Nam Gu, Seoul, Korea 135-090  
TEL: 011-82-2-555-JOBS(5627)  
FAX: 011-82-2-552-4FAX(4329)

Room & Board plus pay for p/t babysitting. 3 boys 3, 5, & 11 years old. Call 872-7649.

1 FREE screen charge at NANA'S SCREEN PRINTS  
Tee Shirts, Sweats, Hats, and more!!  
CALL 596-6725 or leave a message and phone number at 820-5906.

EASY MONEY- For clipping coupons. WORK AT HOME- For reliable company. No Quotas, No Limits. Fully Guaranteed. Send \$1.00 and a SASE to: Coupon One, P.O. Box 266, Seaford, VA 23696.

### CAREER IDEAS BY AMA

-ALL STUDENTS ARE WELCOME TO ATTEND- TOPIC: Hotel Sales Management SPEAKER: Aimee Mayer, Assoc. Sales Manager, Comfort Inn-Newport News. TUESDAY, FEB. 20, 12PM- CHRISTOPHER'S BANQUET ROOM.

Laura: Good seeing you. Buckly: Got keys? Anna Marie: Always around. Marc: I plead the fifth. Courtney: The best cookies! Jeff: It's on! Ralagh: Sportin' Madizm! Arlene: U hiding? Mary: Cool head band. Scott: Is Magic back? Mandy: Come out for just one. Ladies: Happy Valentine's!

-Pat B. (Jumangi)

# USE A LITTLE RESTRAINT WITH YOUR KIDS.





# CHANGE IS GOOD...

No Annual Fee

(Please see application inside for details.)



IF YOU DON'T GOT IT, GET IT.®

# ...BUT CASHBACK BONUS\* AWARD IS BETTER.

## BUILD YOUR CREDIT RATING

With the Discover® Card you will begin to establish your own personal credit history every time you make a purchase.

## NO ANNUAL FEE

With your Discover Card there's no annual fee.

## NATIONWIDE ACCEPTANCE

Over two million locations, including The Gap, Musicland and TGI Friday's.

## COMPETITIVE RATES

New Discover Cardmembers receive our Best Rate\* (Prime Rate + 8.9%) on purchases. We call it the SmartRate® Program and it's not just an introductory offer. The more you purchase the lower your rate can go.\*

## THE CASHBACK BONUS\* AWARD

You'll receive real money back just for using your Discover Card, up to 1% paid yearly based on your annual level of purchases.

\*For additional details, please refer to the Important Information section on reverse side of the application.

## THE APPLICATION INSTRUCTIONS:

To assure timely processing, completely fill out all spaces and sign the application before mailing. The application is to be completed in name of person in which the account is to be carried. Please attach a photocopy of your student ID or paid tuition bill for the current semester.

ADDRESS where you want card and billing statement mailed:

First, Middle, Last Name (leave space between each)				FSMM	
Billing Address	Apt. No.	City	State	Zip	

### STUDENT info:

Your Telephone Number At School ( ) ( ) ( )	Permanent Home Telephone ( ) ( ) ( )	Social Security Number ( ) ( ) ( ) ( ) ( ) ( )	Birth Date (mo. day yr.) ( ) ( ) ( ) ( )		
Home Or School Address (different from above - required)		Apt. No.	City	State	Zip
College Name (no abbreviations, please)			City	State	Zip
Are You A U.S. Citizen? <input type="checkbox"/> Yes <input type="checkbox"/> No	Are You A Permanent U.S. Resident? <input type="checkbox"/> Yes <input type="checkbox"/> No	Class <input type="checkbox"/> Grad Student <input type="checkbox"/> Senior <input type="checkbox"/> Junior <input type="checkbox"/> Freshman <input type="checkbox"/> Sophomore	Graduation Date (mo. yr.) ( ) ( ) ( ) ( )		

### Employment info:

Name Of Employer (if currently employed)	How Long	Yearly Gross Income \$	Employer's Telephone ( ) ( ) ( ) ( )	
Employer's Address	City	State	Zip	

### Financial / SECURITY info:

Mother's Maiden Name (for security purposes)	Do You Have <input type="checkbox"/> Checking Account <input type="checkbox"/> Savings Account
--	---

### Signature required:

I authorize Greenwood Trust Company to check my credit record and to verify my credit, employment and income references. I have read and agree to the Important Information on the back. I agree that if I use my Card or Account I will be subject to the terms and charges specified in the Discover Cardmember Agreement which will be sent with my Card. I certify that I am age 18 or older and that the information provided is accurate. I understand that the information contained in this application may be shared with Greenwood Trust Company's corporate affiliates. I have attached a PHOTOCOPY of my student ID or paid tuition bill for the current semester.	
<input checked="" type="checkbox"/> Applicant's Signature	Date

Attach photocopy here.



IF YOU DON'T GOT IT, GET IT.®

Here's where you CLICK it, seal it and MAIL it. Postage is FREE.

**DISCOVER CARD** is issued by Discover Bank, a member of the Discover Bank Group. The account is only for personal, family and household purposes. It is not for business or commercial purposes. You agree to allow your name and address of each consumer reporting agency in considering this application, will accept your credit report from consumer reporting agencies in considering this application, and for the purpose of an update, renewal, extension of credit, review or collection of your account, upon your request, we will allow you of the name and address of each consumer reporting agency in considering this application. This account is only for personal, family and household purposes. It is not for business or commercial purposes. You agree to allow your name and address of each consumer reporting agency in considering this application, will accept your credit report from consumer reporting agencies in considering this application, and for the purpose of an update, renewal, extension of credit, review or collection of your account, upon your request, we will allow you of the name and address of each consumer reporting agency in considering this application.

**DISCOVER CARD** is issued by Discover Bank, a member of the Discover Bank Group. The account is only for personal, family and household purposes. It is not for business or commercial purposes. You agree to allow your name and address of each consumer reporting agency in considering this application, will accept your credit report from consumer reporting agencies in considering this application, and for the purpose of an update, renewal, extension of credit, review or collection of your account, upon your request, we will allow you of the name and address of each consumer reporting agency in considering this application.

**DISCOVER CARD** is issued by Discover Bank, a member of the Discover Bank Group. The account is only for personal, family and household purposes. It is not for business or commercial purposes. You agree to allow your name and address of each consumer reporting agency in considering this application, will accept your credit report from consumer reporting agencies in considering this application, and for the purpose of an update, renewal, extension of credit, review or collection of your account, upon your request, we will allow you of the name and address of each consumer reporting agency in considering this application.

**DISCOVER CARD** is issued by Discover Bank, a member of the Discover Bank Group. The account is only for personal, family and household purposes. It is not for business or commercial purposes. You agree to allow your name and address of each consumer reporting agency in considering this application, will accept your credit report from consumer reporting agencies in considering this application, and for the purpose of an update, renewal, extension of credit, review or collection of your account, upon your request, we will allow you of the name and address of each consumer reporting agency in considering this application.

**DISCOVER CARD** is issued by Discover Bank, a member of the Discover Bank Group. The account is only for personal, family and household purposes. It is not for business or commercial purposes. You agree to allow your name and address of each consumer reporting agency in considering this application, will accept your credit report from consumer reporting agencies in considering this application, and for the purpose of an update, renewal, extension of credit, review or collection of your account, upon your request, we will allow you of the name and address of each consumer reporting agency in considering this application.

**DISCOVER CARD** is issued by Discover Bank, a member of the Discover Bank Group. The account is only for personal, family and household purposes. It is not for business or commercial purposes. You agree to allow your name and address of each consumer reporting agency in considering this application, will accept your credit report from consumer reporting agencies in considering this application, and for the purpose of an update, renewal, extension of credit, review or collection of your account, upon your request, we will allow you of the name and address of each consumer reporting agency in considering this application.

**DISCOVER CARD** is issued by Discover Bank, a member of the Discover Bank Group. The account is only for personal, family and household purposes. It is not for business or commercial purposes. You agree to allow your name and address of each consumer reporting agency in considering this application, will accept your credit report from consumer reporting agencies in considering this application, and for the purpose of an update, renewal, extension of credit, review or collection of your account, upon your request, we will allow you of the name and address of each consumer reporting agency in considering this application.

**DISCOVER CARD** is issued by Discover Bank, a member of the Discover Bank Group. The account is only for personal, family and household purposes. It is not for business or commercial purposes. You agree to allow your name and address of each consumer reporting agency in considering this application, will accept your credit report from consumer reporting agencies in considering this application, and for the purpose of an update, renewal, extension of credit, review or collection of your account, upon your request, we will allow you of the name and address of each consumer reporting agency in considering this application.

**DISCOVER CARD** is issued by Discover Bank, a member of the Discover Bank Group. The account is only for personal, family and household purposes. It is not for business or commercial purposes. You agree to allow your name and address of each consumer reporting agency in considering this application, will accept your credit report from consumer reporting agencies in considering this application, and for the purpose of an update, renewal, extension of credit, review or collection of your account, upon your request, we will allow you of the name and address of each consumer reporting agency in considering this application.

**DISCOVER CARD** is issued by Discover Bank, a member of the Discover Bank Group. The account is only for personal, family and household purposes. It is not for business or commercial purposes. You agree to allow your name and address of each consumer reporting agency in considering this application, will accept your credit report from consumer reporting agencies in considering this application, and for the purpose of an update, renewal, extension of credit, review or collection of your account, upon your request, we will allow you of the name and address of each consumer reporting agency in considering this application.

**DISCOVER CARD** is issued by Discover Bank, a member of the Discover Bank Group. The account is only for personal, family and household purposes. It is not for business or commercial purposes. You agree to allow your name and address of each consumer reporting agency in considering this application, will accept your credit report from consumer reporting agencies in considering this application, and for the purpose of an update, renewal, extension of credit, review or collection of your account, upon your request, we will allow you of the name and address of each consumer reporting agency in considering this application.

**DISCOVER CARD** is issued by Discover Bank, a member of the Discover Bank Group. The account is only for personal, family and household purposes. It is not for business or commercial purposes. You agree to allow your name and address of each consumer reporting agency in considering this application, will accept your credit report from consumer reporting agencies in considering this application, and for the purpose of an update, renewal, extension of credit, review or collection of your account, upon your request, we will allow you of the name and address of each consumer reporting agency in considering this application.

**\*Important Information:**

As of January 1, 1996, your Annual Percentage Rate is determined by your business day of the previous month plus a fixed amount of percentage points as follows: Prime Rate plus 10.9 percentage points (not exceeding Standard Rate - Prime Rate plus 10.9 percentage points) or 19.4% (Better Rate) Prime Rate plus 8.9 percentage points, when the Prime Rate is 15.5% or more. Annual Percentage Rate for cash advances: Currently 19.8%, this rate may vary 19.8% when the Prime Rate is 15.5% or more. Cash Advances transactions: The finance charge is 2.5% for each cash advance, with a minimum of \$2 and no more than \$500 but not greater than \$1,000, and 1.5% of each cash advance greater than \$1,000. Late payment fee: \$20 for payment more than 20 days overdue. Over-the-limit fee: \$25.

Best Rate to Standard Rate. Better and Best Rates have a 12.5% minimum. Failure to make required payments converts you from Better or Best Rate to Standard Rate.

Annual Percentage Rate	Variable Rate Information	Grace Period For Purchases	25 days	Two (2) average daily balance (including new balance purchases)	None	\$ 50
------------------------	---------------------------	----------------------------	---------	---	------	-------

Minimum Finance Charge: Annual Percentage Rate. Method Of Computing The Balance For Purchases: Annual Finance Charge: None. Two (2) average daily balance (including new balance purchases): \$ 50.

**USE WHERE YOU SEE** 

NO POSTAGE NECESSARY IF MAILED IN THE UNITED STATES

**BUSINESS REPLY MAIL**

FIRST CLASS MAIL PERMIT NO. 747 WILMINGTON, DELAWARE

Postage will be paid by addressee

GREENWOOD TRUST COMPANY  
**DISCOVER CARD**  
PO BOX 15159  
WILMINGTON DE 19885-9505



**A FEW THINGS YOU SHOULD KNOW ABOUT CREDIT:**

Before you sign this application you should make sure you fully understand what you're getting into. A credit card can be a useful financial tool that can make life easier to live. However, if used irresponsibly, it can become a tremendous burden. With this in mind, it's important to ask yourself some questions before signing anything.

Is there an annual fee? How much interest will be charged? What are the rewards for using this card? In addition to asking questions, make sure you read everything on the application. Understanding the terms

of your credit agreement is important and will provide many of the answers you seek.

Finally the best advice is to use common sense. You know how much you can afford to repay and how long it will take. For example, common sense dictates if you only pay the minimum due each month it will take longer to pay off the balance.

Having a credit card is a commitment from which you can benefit. We urge you to take the time to make sure you're prepared for this commitment.

