

The Captain's Log

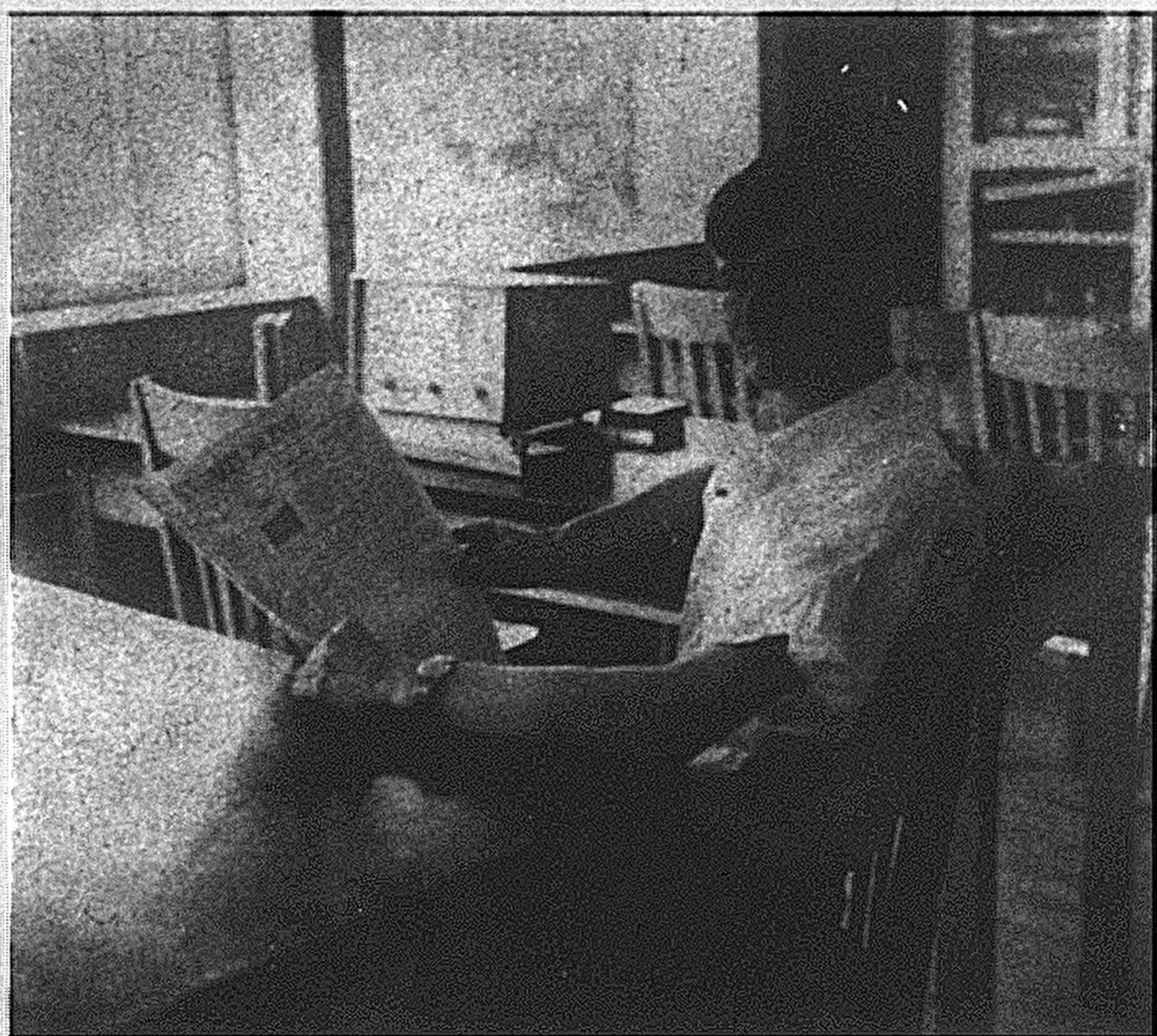


Christopher Newport College, College of William & Mary

Volume 2 Issue 5

NEWPORT NEWS, VIRGINIA

MAY 1965

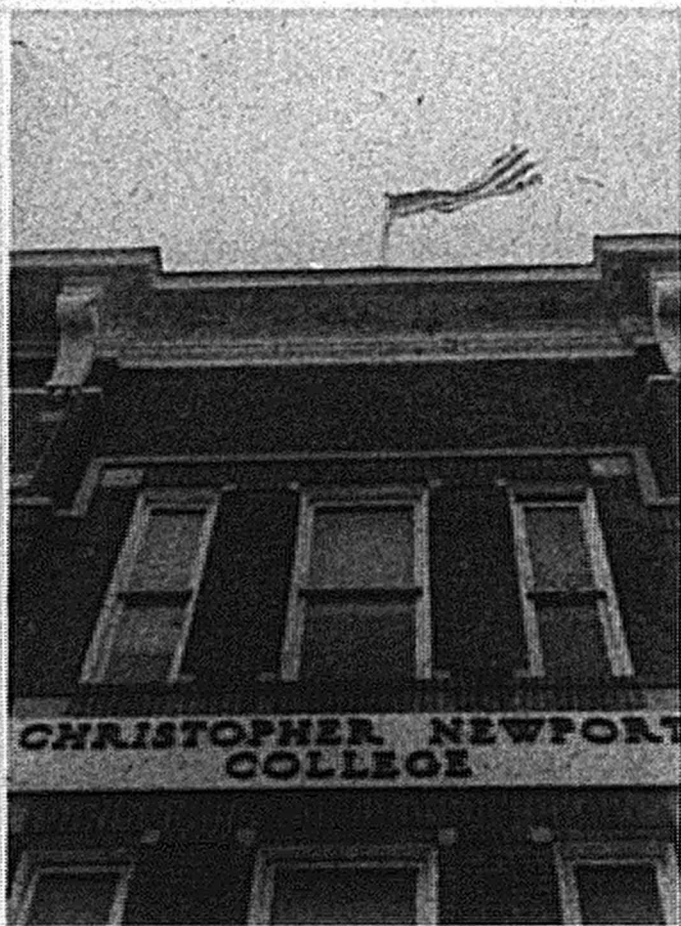


Left
SGA President
John Scull

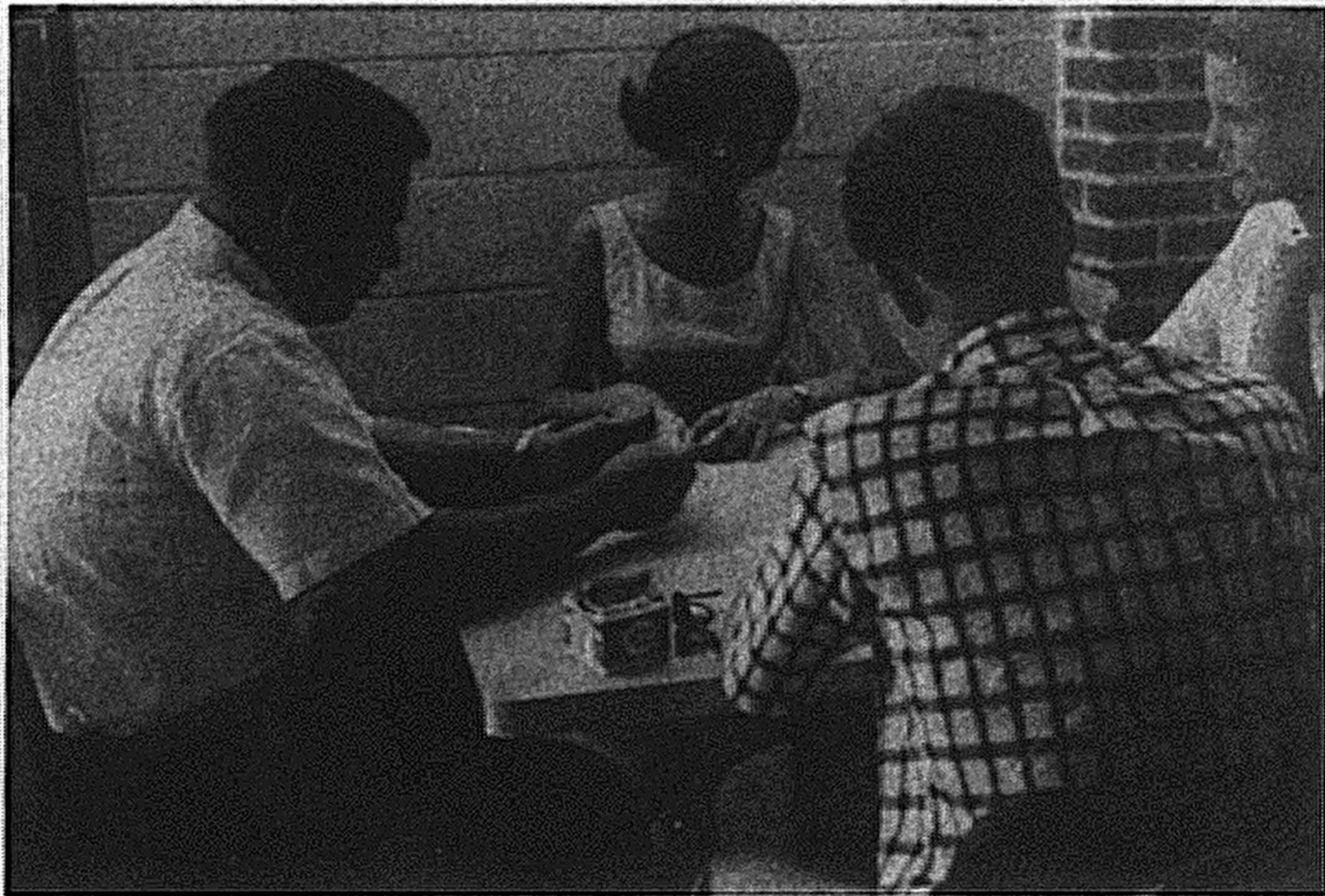
Right
SGA Officers
Vice President Steve Linkous
Treasurer Barbara Hamel
Secretary Sandy Paxon



Sophomore Women Honor Council - Shiela Gebhardt



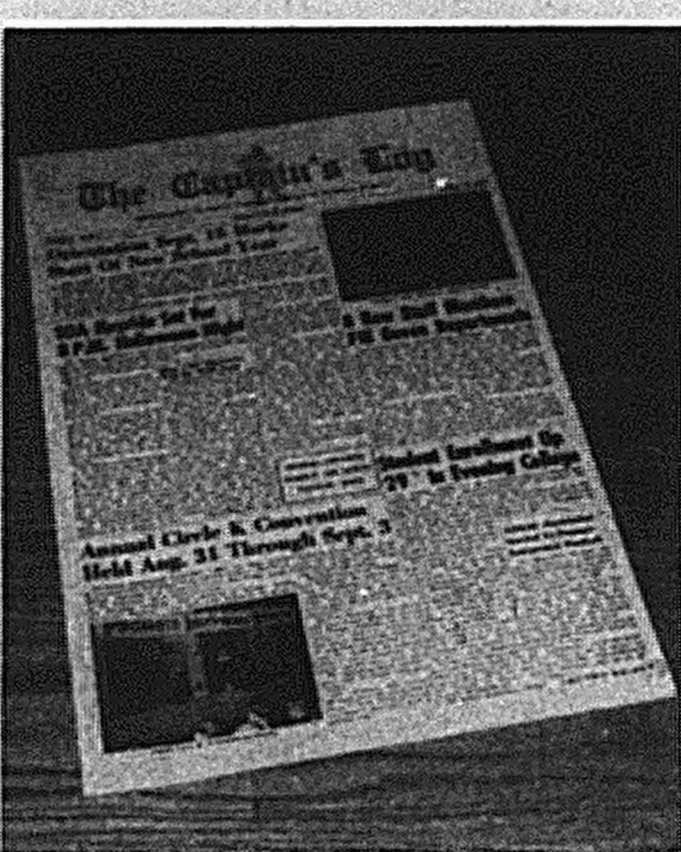
CNC Old Building



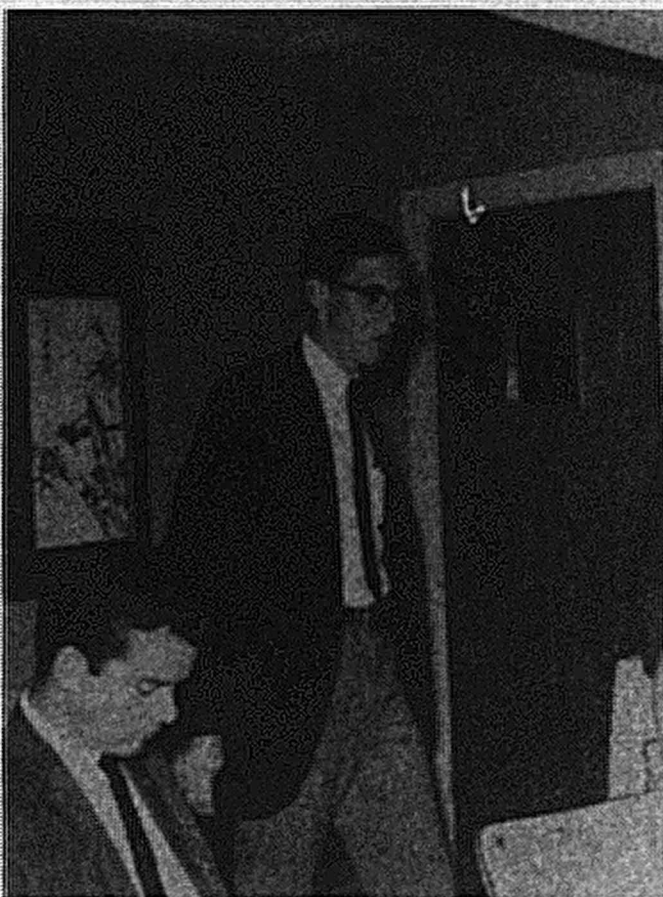
A few students engage in a relaxing Bridge game



Sophomore Officers: President Carol Harris; Vice President Louis Tapia; Secretary Marie Boudreau



CAPTAIN'S LOG Editor
Trish Williams



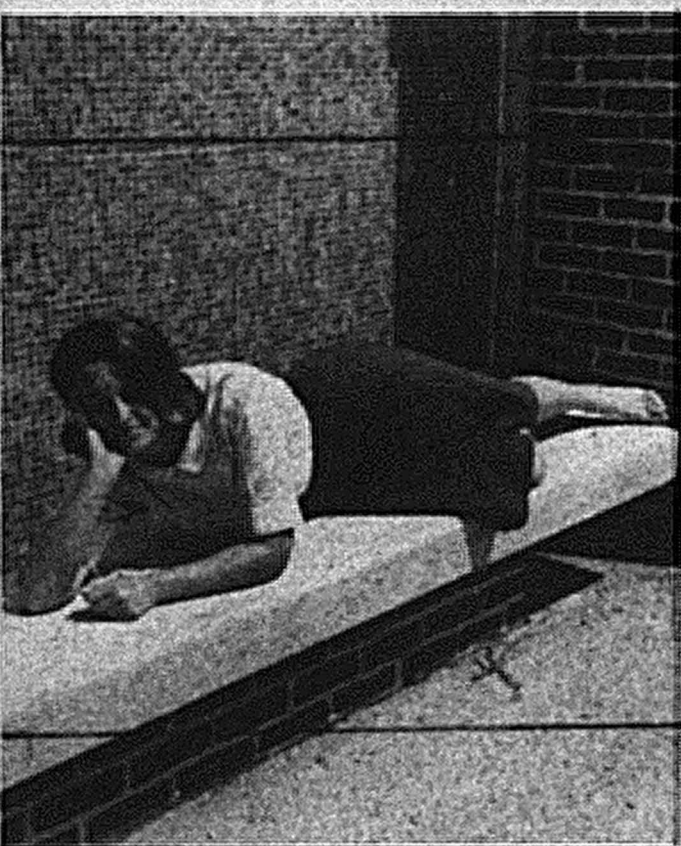
64-65 Circle K President
Tom Lockard



65-66 Circle K President
Donnie Lake



Trident Staff 65-66 - Editor Gail Latta



Circle K Banquet

Colleges Face Major Challenge

The Twentieth Century role of American education is emerging, and the proportions of the task ahead are alarmingly significant. At this critical point in the tide an intricate and efficient technology is as basic to our continued of international pressures and progress as was the principle of the wheel centuries ago—a number of powerful catalytic forces are generating an awareness of our educational weaknesses.

Colleges are currently confronted with their greatest challenge—it is not the challenge of Russia alone; more directly perhaps, it is the great burden of numbers being precipitated on the American college scene as a result of the population explosion which reverberated through the 1940's. A second element to be reckoned with is the fact that many of the increased number of people who are in college are seeking more years of education. Another factor at work is simply the tremendous increase in the number of things to be learned and the amount to be learned in particular fields.

Each day it becomes more apparent that the "Battle of the Bulge" which will be waged throughout the 1960's and thereafter will present to our colleges the opportunity to raise their academic levels and set standards of accomplishment unheard of a decade ago. Also, however, it will place upon them the weight of responsibility for increasingly incisive yet equitable

methods of selection of their students. This type of selection which operates to benefit both student and institution can be accomplished even in the face of overwhelming numbers of well-qualified candidates. Today, as we are feeling the impact of the first crest of the onrushing tide, a number of colleges are dealing effectively with the intricacies of this difficult type of selective process.

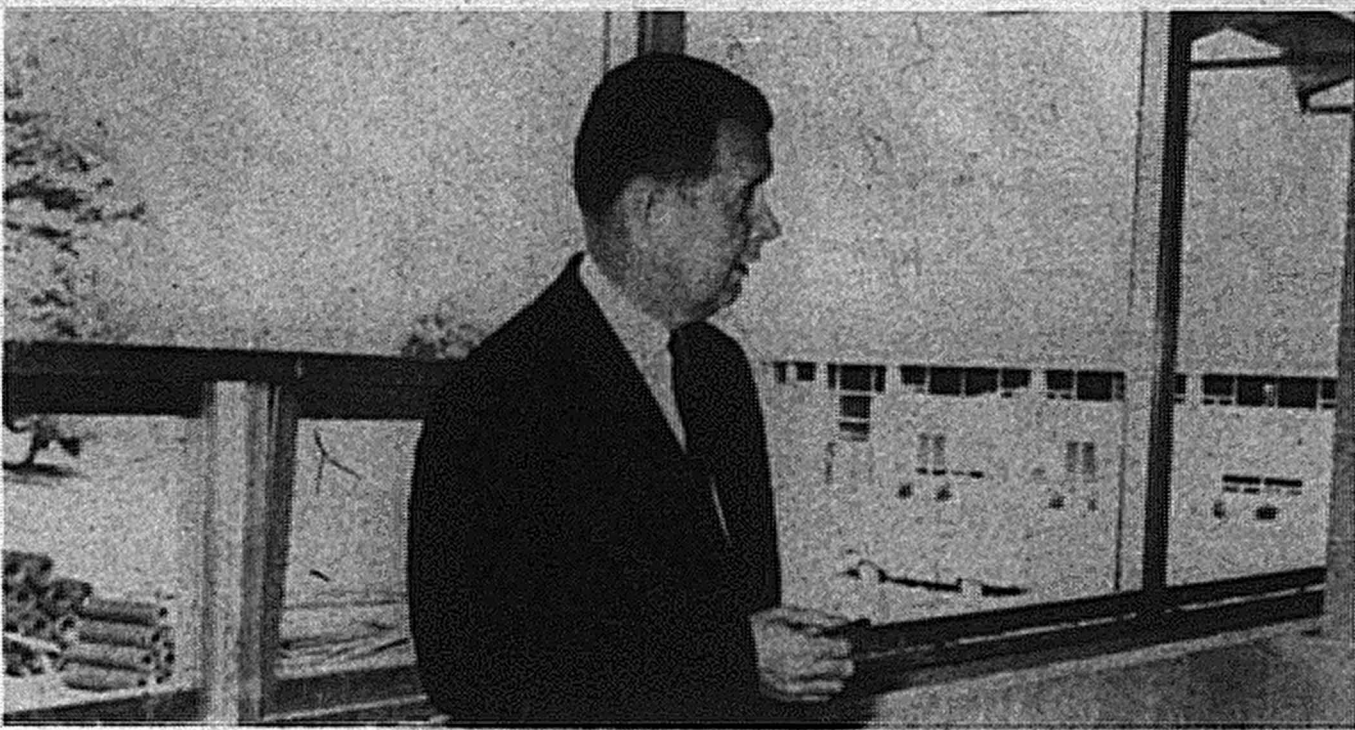
The sine qua non of selection is quite obviously a record of academic accomplishment. This record should be related to those of other students who fully expect to engage in college experience. A grade point average per se means virtually nothing to the admissions dean unless it is related to other records. If the dean is familiar with the standards of a specific school, he will find that a record of achievement at that school is without question the best single predictor he has of the candidate's probable college success. Proper and valid appraisal of accomplishment is a difficult task at best, but experience gained through years of interchange gives the college admissions officer a very accurate yardstick to apply in this first phase of selection.

Next, a college directs careful attention to the actual course content of a candidate's secondary school program. This is done to assure the college that the applicant has prepared himself and in a discipline which will enable him

to cope effectively with the specific and general demands of the college's own curriculum.

A profile of psychological test performance is of inestimable value to the admissions dean, but only if he uses it wisely and in its proper perspective. In prediction, the profile should be used as an adjunct to the record of accomplishment and not as the predictor itself. A single test score, not supported by the results of other testing, can be a dangerous weapon in unskilled hands. A pattern of performance must be established before a college can give intelligent credence to the result of any single test. This applies also to the scholastic aptitude test of the College Entrance Examination Board which so often has been erroneously depicted as the chief determinant of college admission. I hope that no college will place too much emphasis on the six stark digits which reflect a three-hour performance in a strange test room on a Saturday morning. Test performance too is important mainly in a relative sense—that is as it relates to accomplishment or lack of accomplishment.

The next criterion is perhaps as combined weight of the first three we have mentioned. This is the important to a college as is the personality recommendation furnished by a teacher, a guidance officer or a principal. Colleges must rely on the good judgment and objectivity of these secondary



Director H. W. Cunningham

school officials for complete, meaningful appraisal of a candidate. Without this appraisal, there is no clear basis for selection beyond the impersonal facts of the academic and test records. Information concerning general character, intellectual curiosity, ability to adjust, and a love for learning is an important signpost on the road to competent selection.

A record of well-balanced participation in extracurricular activities is most desirable. This program must reflect a balance between sensible participation in activities and good solid academic accomplishment. No longer is a student attractive to most colleges if his background is rife with extracurricular activities and his academic record only mediocre. In this area of admission selection, "balance" and "perspective" are the watchwords.

Having reviewed the application through the last step, the admissions dean then reviews carefully a summary of the candidate's read-

ing accomplishments with an eye turned toward tastes and interests. Here the dean can begin to determine the applicant's depth and the scope of his horizon. It goes without saying that the ability and the desire to read well and with understanding are valuable tools in insuring the success of the average undergraduate.

The last criterion I shall mention, but in many ways perhaps the most revealing of all, should be a sample of the candidate's ability to sit down and write lucidly and with some style. Here is the real talisman in the hand of the admissions officer. With it he is able to divine much of the applicant's true nature—background interests, likes and dislikes, strengths and weaknesses, and in many instances a great deal about his personality itself.

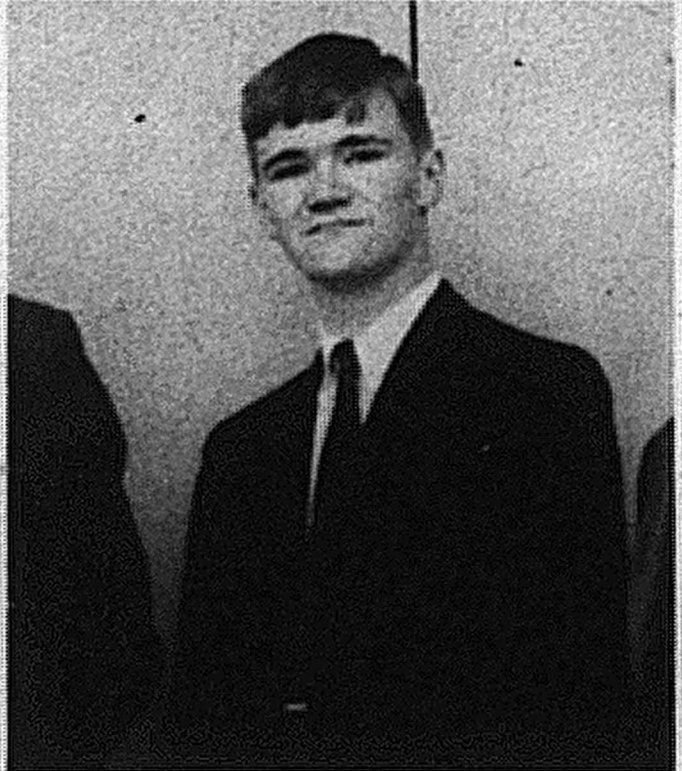
Perhaps the judicious employment of these "admissions tools" can lead our colleges out of the admissions muddle.

Students Should Protest

It is in to protest, especially if you are a student. The act is even more successful if your cause seems small. An obscure cause requires more strength to back than a known one. Christopher Newport is living in the past. There has been no record of any riot in its long ivy bound history. There have been hints of a march on city hall or mumblings of a lay-in in shipyard traffic as an endeavor to secure a stop-light on a certain busy corner and there was plenty of loud talk when the five cent coke machine was removed from old 222, but nothing has really gotten past the planning stage. News-week magazine recently polled students all over the country and found that 93% would petition, 58% would demonstrate, and 43% would go to jail, if they felt strongly about a cause. Are we to fall below the national average? There are many local causes that need your energy! Try protesting, you'll

meet all kinds of interesting people.

And if you find yourself really interested, there is a national program of student employment known as SCOPE which has 96 member organizations offering 27,000 summer jobs on which I have information. There are some protest groups represented!



John Scull SGA President

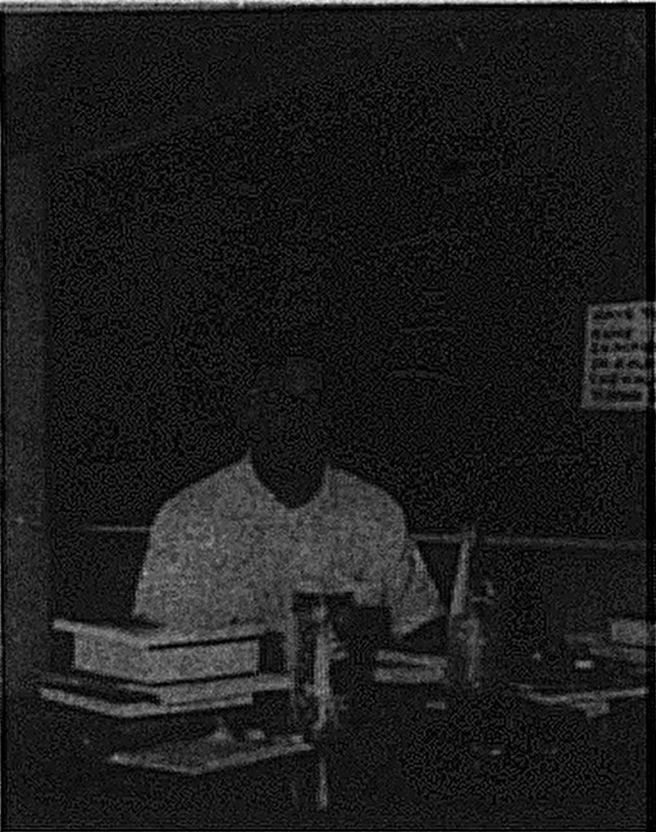


Mr. Windsor,
Student Personnel Officer



Miss Ramseur, Registrar

Our Intellectual Side



Jim Paxton eating as usual



Jean Regone working hard?



CNC's Spring Classic

SUPPORT

OUR ADVERTISERS

THE CAPTAIN'S LOG

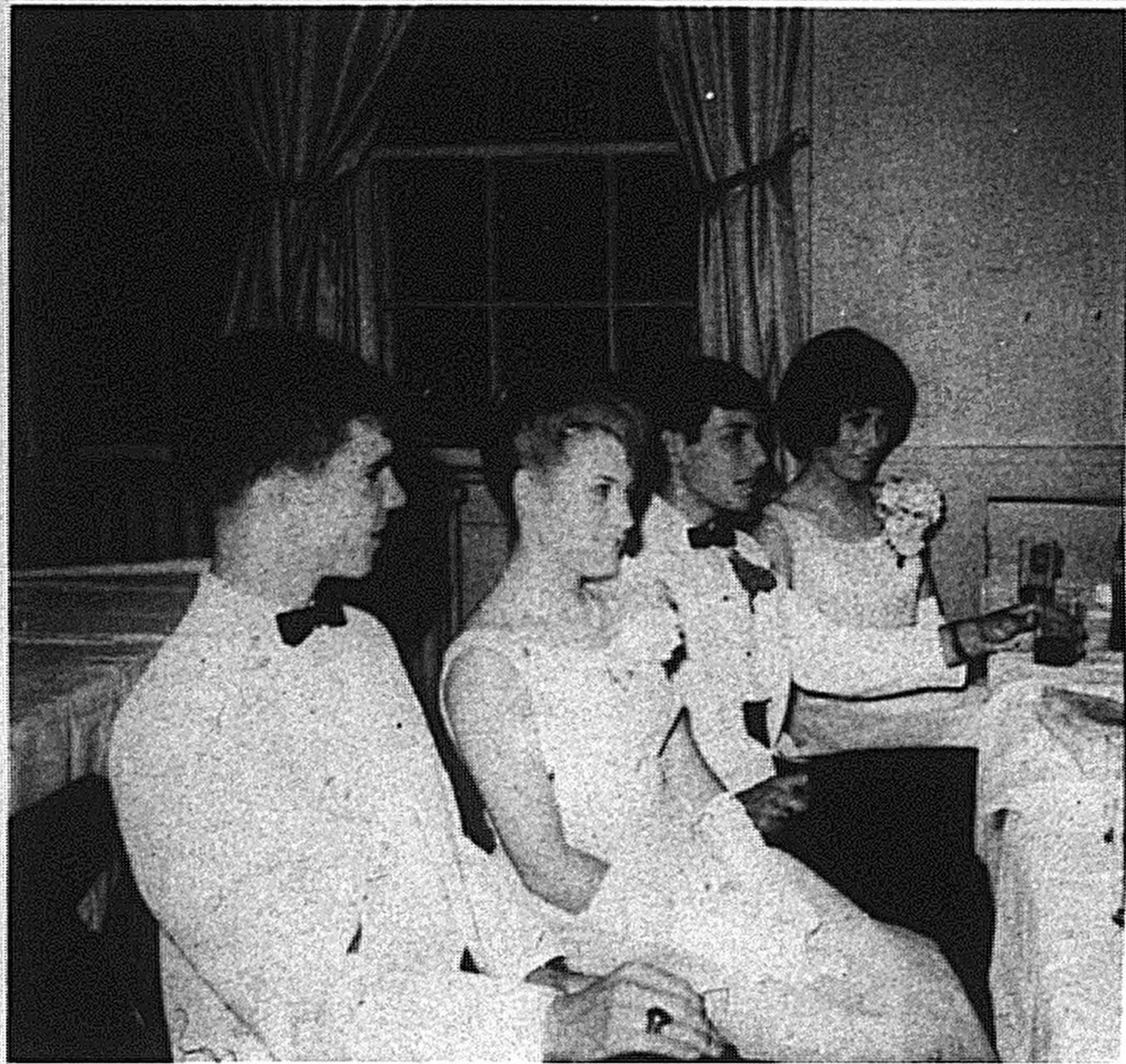
Established 1963

Established and published by the students of Christopher Newport College

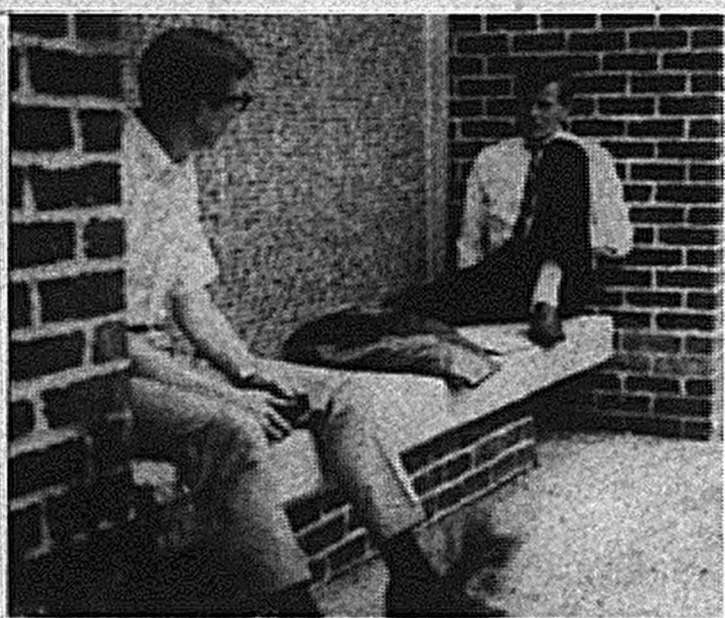
EDITOR-IN-CHIEF Trish Williams
BUSINESS MANAGER Joanne Clark
ADVERTISING MANAGER Perry Dupue

Make-up Editor Katie Dempsey
Photographer Jay Warren
Faculty Advisor Mr. William Kitchin

Christopher Newport College 1964 - 65



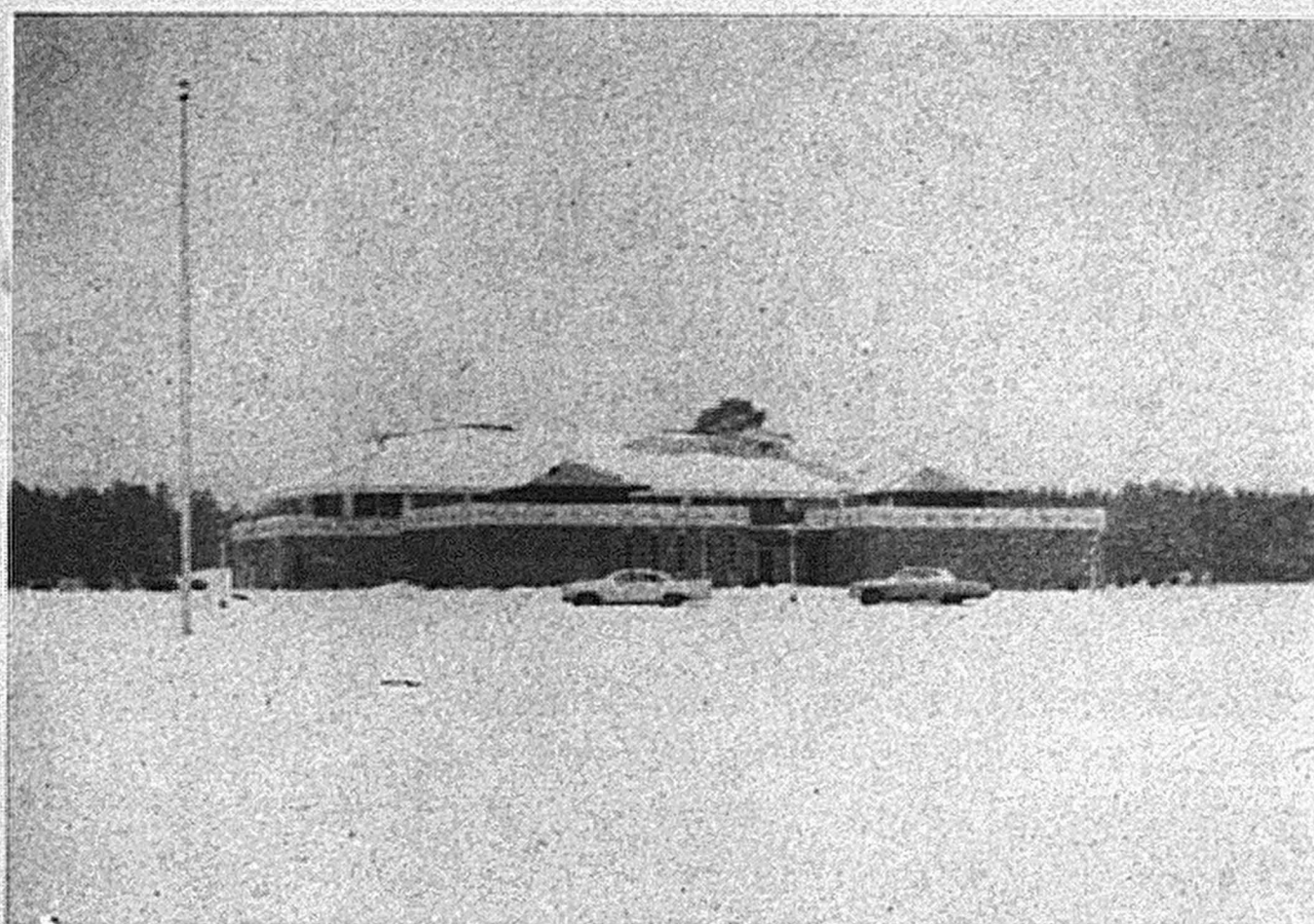
"Oh, isn't that sweet!"



Does he or doesn't he?



CNC athelits



CNC in the snow



Come on Ronnie, it's not that bad.



Carolina is the best



Mr. "A" strikes again.



A band to remember - ?



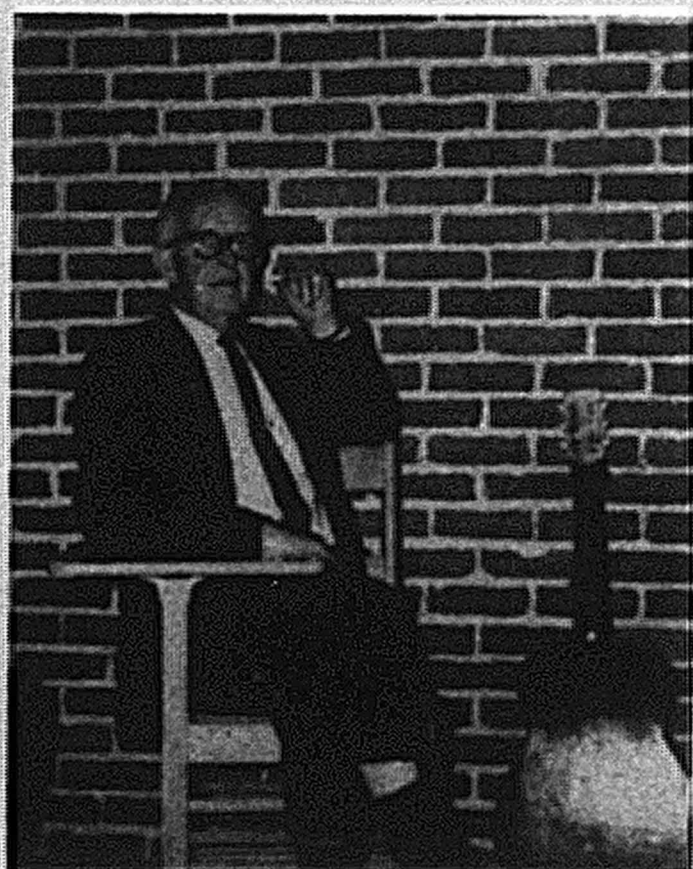
And then Bobby said . . .



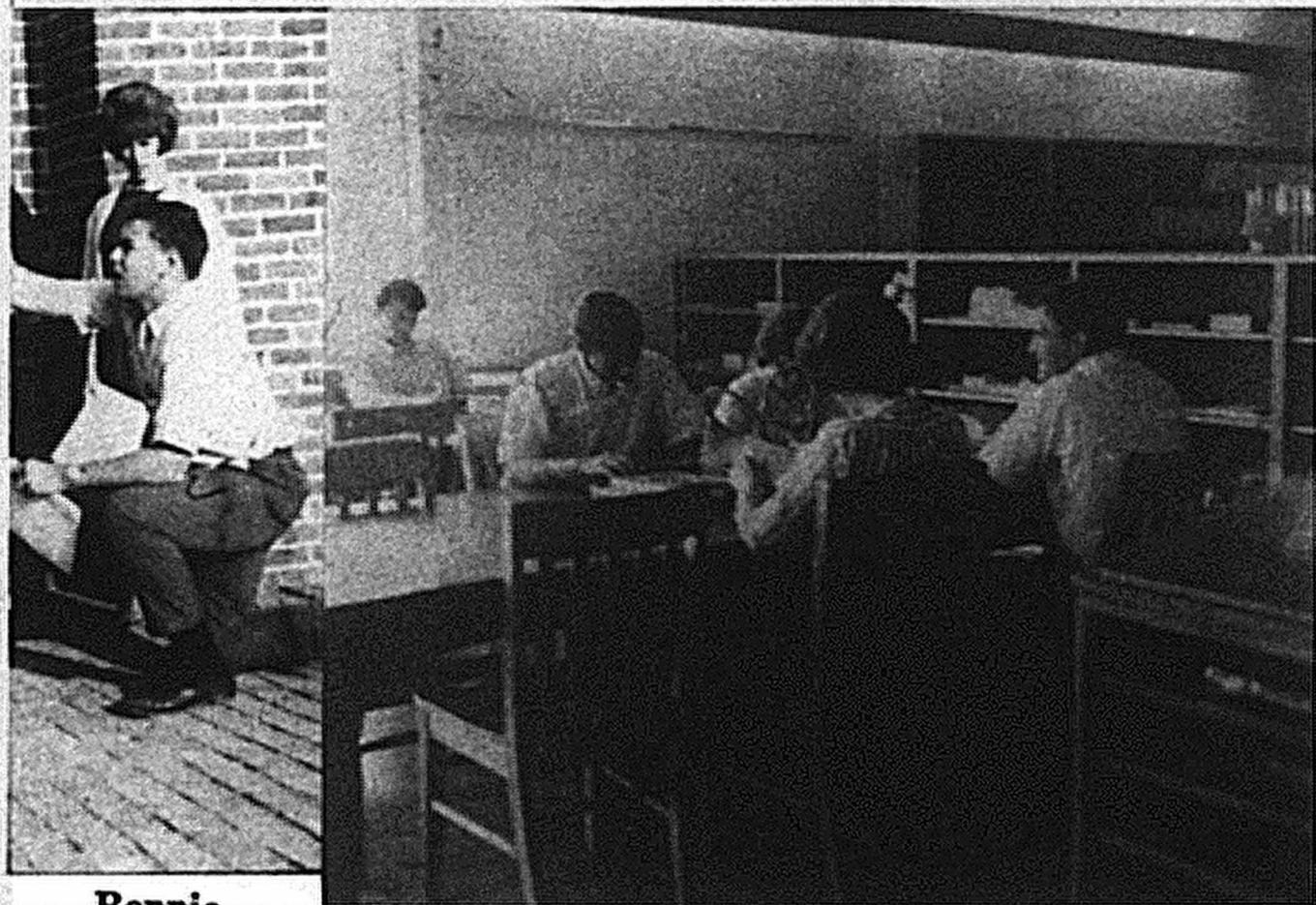
Another paper, Vicki?



Mr. Wise you're back again?

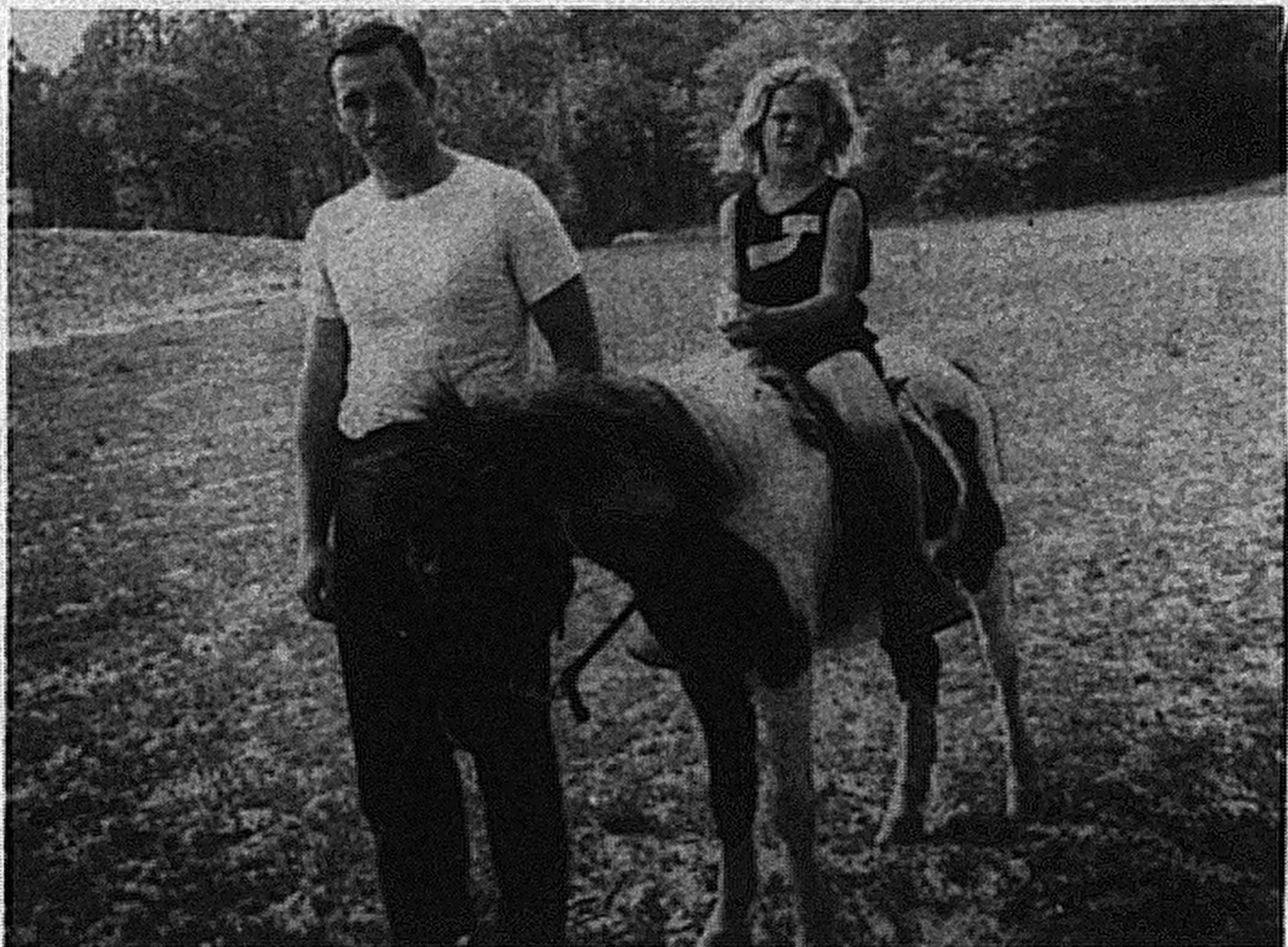


HA! HA! HA!

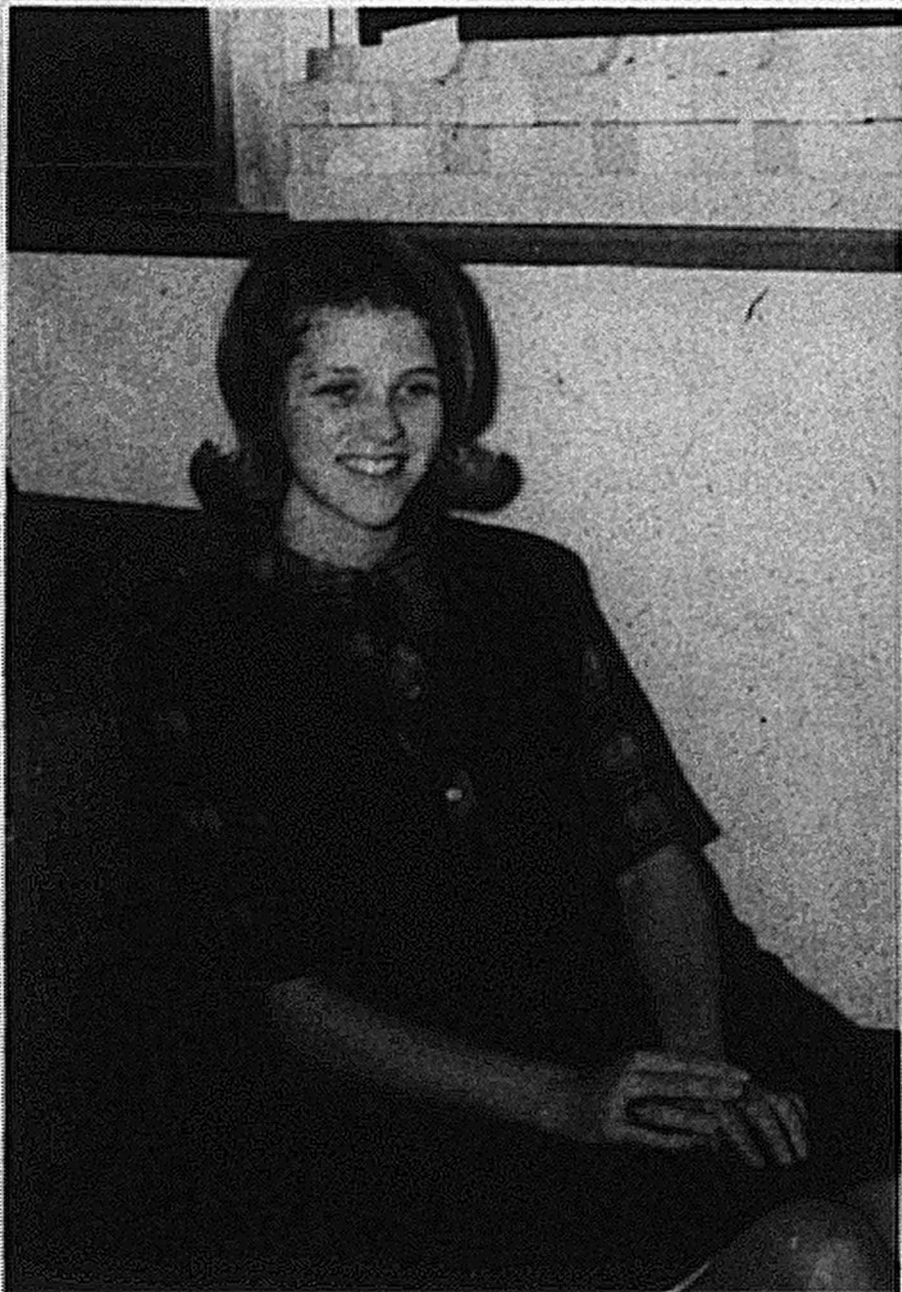


Ronnie
You aren't!

Study Much?



The South isn't so bad after all is it Ted?



Our prietiest
Francis Fry



OK Malomi - We see ya!

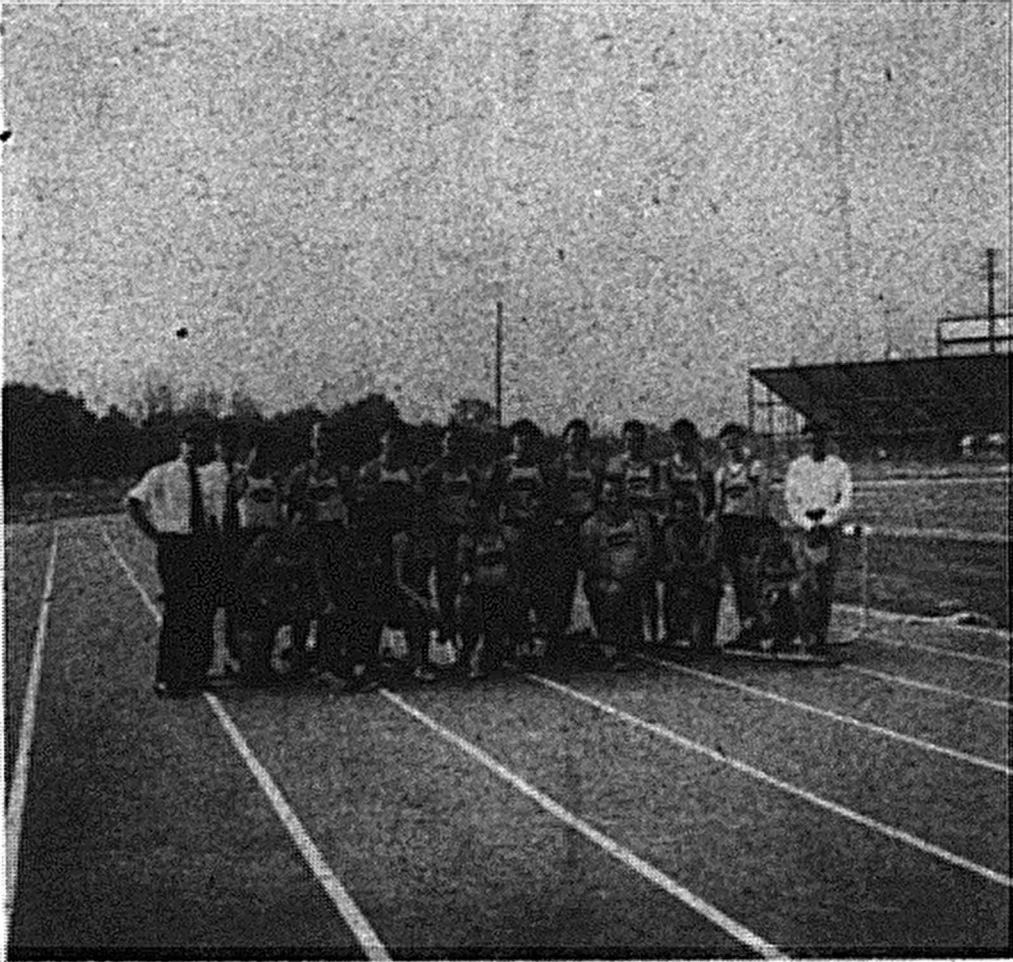


A fall football game between ?

SPORTS

TRACK SCORES

Frederick Military	CNC	68	62
Univ. of Richmond Fresh.		40	104
Apprentice School		33	105
Chowan Jr. College		43	101
East Carolina Fresh.		59	85
2 Triangle Meets	Lost		



CNC's Track Team



Who has the ball?



Run Dickie Babie!



Man, what a BOD!



Say you run hurtles Bobby?



Mrs. Hunter or Micky Mantle?



HIT IT!



Please don't drop it Perry!



How'd ya do?



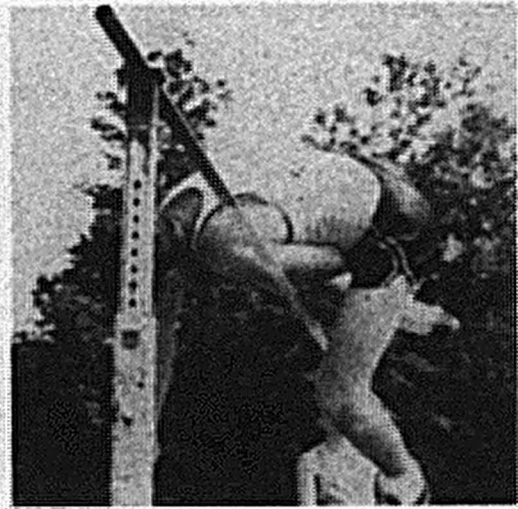
What a throw Norman!



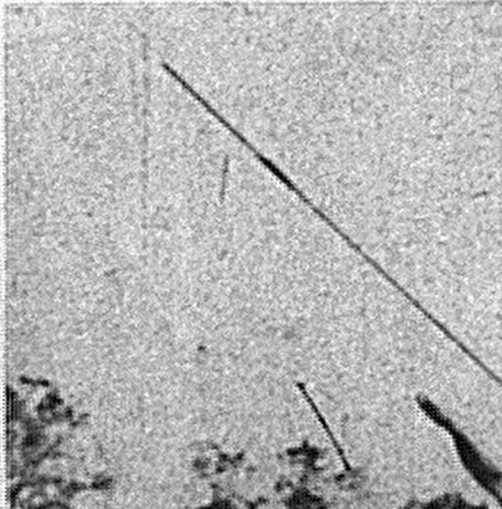
Who hit the ball?



Skateboard USA



Up and over.



It's a real close one.

CHERRY'S ESSO SERVICENTER

Complete Car Servicing and General Repairs
on all makes

Front End Alignment and Steering Service

Free pick-up and delivery

12309 Warwick Boulevard Phone 595-0309
"An extra measure of service"

WARWICK MOTEL RESTAURANT

Welcomes

CHRISTOPHER
NEWPORT
COLLEGE

Hiddenwood Cleaners

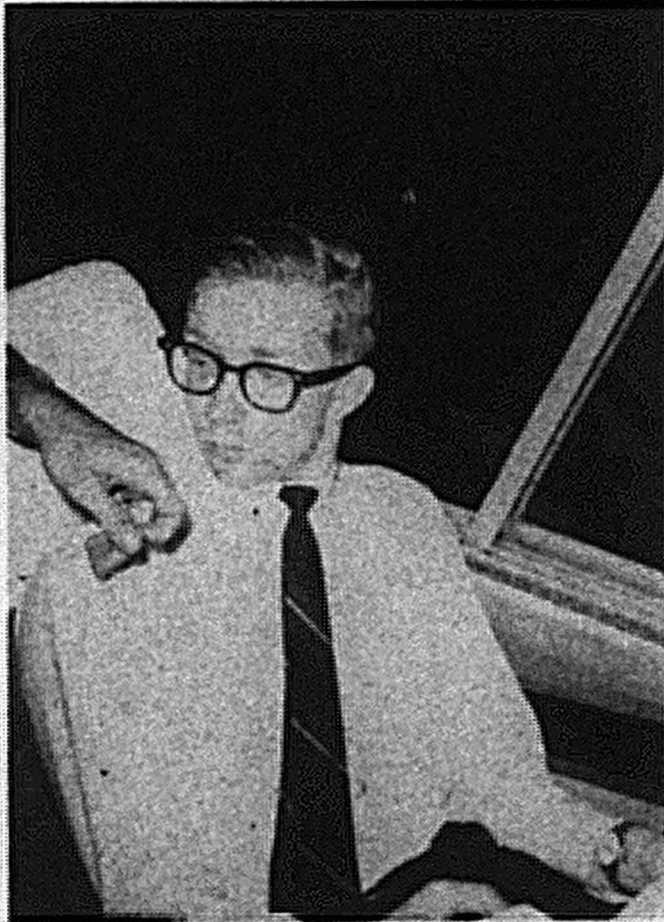
Hiddenwood Shopping
Center

595-0545

Same Day Service
No Extra Charge



ROAD SERVICE FOR
Hiddenwood and Riverside Area
EXPERT AUTO REPAIRING
Complete Line of Auto Parts
"NILES NYQUEST, Mgr. "
Dial LY 6-9814
12301 Warwick Blvd.



What's going on Jim?

