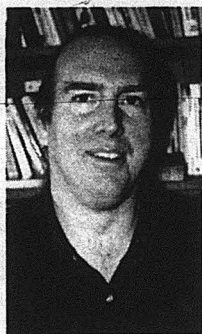


THE CAPTAIN'S LOG

THE OFFICIAL STUDENT NEWSPAPER OF CHRISTOPHER NEWPORT UNIVERSITY



**Dr. Scott Pollard
named new
English chair...p3**

News Briefs.....2

Campus Life3

**Arts and
Entertainment.....5**

Food7

Sports9

**Classifieds and
Comics.....12**

New Residence Hall opens

However not without problems

By Virginia Miller and
Nick Thomas
Staff Writers

On August 19, 2000 the first wave of CNU students to live in the James River Hall moved in for the fall semester. Emotions were a mix of excitement and the usual concerns of getting along with roommates and doing well in the upcoming year. The arrival of James River Hall brings with it a variety of advantages and disadvantages.

Unlike Santoro Hall, for example, JRH does not have curfews for the opposite sex. Each room in the residence hall also has a common living room that allows students to have guests without the worry of disturbing other roommates.

Amidst all the energy, however, James River Hall residents began to encounter the problems with living in the new dormitory. Lack of hot water and low water pressure in the sinks has

caused some discomfort along with the difficulty of trying to maintain a steady room temperature. The Internet and phone jacks do not function properly either, which is a huge inco-

venience to students enrolled in on-line classes. Another major concern is how easily the walls scuff and the difficulty of

See James River...p2



Virtual Reality training system comes to CNU

By John Bailey
Staff Writer

You stare out over the space station's cargo area. An overhead conveyor belt transports dangerous, magnetic blue spheres across the warehouse. However, the spheres are too numerous, jostle one another and fall to the ground and explode on impact. Your job-position yourself beneath the spheres and push them back onto the belt.

Welcome to CNU's new world of athletic training. In May, the university became one of the first schools in the nation to begin using the trazer computerized training system. Trazer is a cross between a virtual reality video game and a circuit trainer. Athletes strap a special belt called the "beacon" to their waist

which emits an invisible, infrared signal, allowing the computer to calculate an individual's position and movement in relation to the computer's sensors. The sensors translate the information to a television screen which allows the individual to observe his/her on-screen movements as the virtual athlete, "physbot".

"This is a great tool," CNU athletic trainer Chris Jones said. "Besides getting someone excited about conditioning and rehab, the system tracks everything, telling how many times you move in one direction and how fast you do it."

The Trazer system can measure lateral movement, forward and backward motion and even jump height. The system then provides that information as real data for processing.

"It really picks-up a lot

of things in their performance, increasing quickness and reaction time," Jones said. "It should help our athletes get to the next level, giving them an added edge in competition."

The system has not been widely used yet, but the few students who have tried it could see how it would improve an athlete's performance.

"I was thinking it was a joke," tennis player Tommy Miller said. "But after going through one of the programs I was really impressed. I was in one of the games that measures forward and backward lateral motion and learned that my left back step was slower than my right back step. I never thought about it before. I have weak ankles and that is probably the reason for the slower speed."

Miller believes the

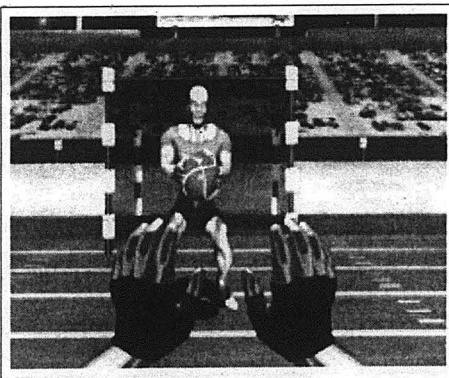
system would be a good addition to any sports conditioning program.

Besides sharpening skills, trazer can speed-up recovery time after an injury, getting a player back to their previous level of performance.

"The program brings up the level of awareness of an

athlete's movements," recreation, sport and wellness management professor Suzanne Dillon said. "The system encourages them to get the right movement down to avoid further injury and helps coaches make better decisions for bringing back

See Trazer...p2



News Briefs

George Allen opens Newport News Republican headquarters

NEWPORT NEWS, Va.

Former Governor George Allen was in town on Wednesday, August 23rd to help at least a hundred other Newport News Republicans, officially open the Newport News Republican Headquarters, located at 12515 Warwick Blvd. in the Carrithers Realty Building. The CNU College Republicans were on hand to hear the Governor speak about the growth CNU has made in the hands of President Paul Triple, formally known as Senator Triple.

Allen expressed his support to CNU by detailing the successes he's



had in the past, as Governor, that directly affect the students, saying "The Future can be determined by what was done in the past. We've worked on positive impacts for the college students at CNU, like frozen tuition, making higher education affordable expansions." Governor Allen is now seeking the seat, currently held by US Senator Charles Robb. As the next republican US Senator from Virginia, Allen hopes to garner a strong alliance for the Commonwealth with the current republican US Senator John

Continued from James River, p1

removing these scuffs. "I have a lot of posters and items I had hoped to attach to the wall, now if I do so, I may have to pay for a whole new paint job!", a junior said. Payment for this "abuse" is a common fear lingering among the hall.

Other complaints ranged from broken light covers and spots on the floor to small shower stalls and a lack of sufficient parking spaces. On the social level, many mentioned the difficulty of hearing a friend knock on the door and the lack of peepholes on the doors.

James River Hall was scheduled for completion weeks ago. When asked about the rush toward the school's deadline, Director of Auxiliary Services, Steve Pappas replied, "just like with term papers, work expands to fill the time allotted." Had the Hall been completed by the set deadline, the University staff would have had time to go over the building and find its inconsistencies. Regardless of the timeline, however, the housing department is persisting in its attempts to solve these problems. For those who are concerned about the charges at the end of the year, it should be noted that the University is not planning on charging students for normal wear and tear.

Even with the problems that lie within each room of James

Riverhall, the students still seem to have come out ahead. Sophomore Addison Thomas said "The school looks great, the people look happy, and I can now tell my parents I live in a luxury hotel." Fortunate enough to be equipped with a larger living space and expansive bathrooms, many, like senior Alex Cayetano, still enjoy the luxury of its convenience; Cayetano commented, "Santoro was a bit small for three/two people to a room. I like the new dorm because it gives me some space to relax and be myself." Problems aside, a high percentage of students agree with Cayetano.

While the residents of James River Hall are enjoying their new "apartment-like" homes, Santoro residents are right alongside them enjoying what promises to be a very eventful year.



Chris White, Tim Baldwin, and Dave Hamrick enjoy their spacious living room.

2000 freshman class largest and smartest class ever

Christopher Newport University began the fall semester with a record-breaking number of freshmen that will have the highest SAT average in the school's history.

On August 21st, CNU welcomed its largest freshman class in history. One thousand freshmen are attending CNU this fall which is an increase of nearly 200 over last year. All told, there are 5,224 students on CNU's campus.

Freshman applications have exploded by 205 percent in the last four years. This year, nearly 3,400 students from throughout Virginia applied and CNU accepted 55% of these applicants.

Not only has the number of students increased at CNU, but also the quality of students. The average SAT score for the freshman class is 1070 - that's an increase of 112 points in four years and their average GPA is 3.2.

"CNU is attracting high ability students from across Virginia in record numbers. These young people will enliven our campus with their intellect, energy, ability, and creativity," said Paul Triple, CNU president.

Continued from Trazer, p1

an injured athlete."

The program offers four different games that are aimed at improving basic skills. In "Cargo Crisis," athletes practice rebounding. "Goalie Wars" is a ball handling and passing exercise. "Spike Dodge" strengthens an individual's spatial perception and increases their lateral speed. "Trap Attack" improves an athlete's cutting movements and trains someone to make decisive jumping decisions.

The traizer will be temporarily set up in the Ferguson gym until the Sports and Convocation center is completed in October. Right now, the program is primarily for CNU athletes, but eventually, the athletics department will set up block times for general use of the system.

The Captain's Log encourages Letters from our readers!

See the caption to your right.

The CAPTAIN'S LOG

2000-2001 Staff

Editor In Chief -
Hugh Spain

Layout and Design Editor -
Patricia Mooza

Managing Editor -
Nick Thomas

A and E Editor
David "Cash" Arehart

Sports Editor
Michael Mullin
Computer Systems Analyst -
Tim Cline

Advertising Director
Regina Addy

Copyeditor
Cami Wood

Staff Writers:
Kimberly Wright
Terri Fleetwood
Joni Owens
John Bailey
Steve Flemming Jr.

The Captain's Log is the Official Student Newspaper of Christopher Newport University.

The Captain's Log is published on 24 Mondays throughout the 1999-2000 academic year.

New contributions are accepted by fax (594-8759), by electronic mail (clog@cnu.edu) or in The Captain's Log office (SC223).

Circulation inquiries, advertising rates and policies are available upon request by telephone, (757) 594-7196, mail or on our website.

The Captain's Log is created with Apple Macintosh computers, using Adobe PageMaker.

The Captain's Log welcomes letters from its readers. Send letters to: The Captain's Log, 1 University Place, Newport News, VA 23606. Letters may also be brought to our office or sent to us by electronic mail at clog@cnu.edu. Anonymous letters may be printed, but writers must sign the original, providing full address and telephone number for verification purposes. Students: please indicate your class status. If the writer is affiliated with an organization, that may be noted. The Captain's Log reserves the right to edit letters according to style, subject and length, as well as to refuse publication. For a letter to be considered for publication in the next issue, we must receive it by noon of the Wednesday prior to publication. Corrections/Clarifications to The Captain's Log will be published in the issue following the error.

Campus Life

Student Perspectives

Interviews taken by Laura Espiet, staff writer

Incoming

What is your impression of CNU? "I love it actually. The campus is beautiful and the classes are a perfect size."

What about CNU strikes you the most? "How close everyone is. In VA Tech or ODU students are not as close. Here it is more close and compact. You know more people...make friendships easily."

Is there anything about CNU you don't like or wish to see changed? "The Cafeteria. Chesapeake Harbor Lights is too expensive. It's like six dollars to eat there."

Morgan Miles, freshman
Biology Major

What is your impression of CNU? It's easy to get around.

What strikes you most about CNU? How much money they are spending putting in to it. Staff here is nice, helpful. There is nothing I don't like...no room for improvement.

Has construction affected you in any way? No

Thomas Crosby, freshman
CPSC Major

What is your impression of CNU? I like it a lot. There are one on one classes. Very student oriented. In a lot of campuses there are over 300 students per class and teachers don't care if you show up.

What strikes you most about CNU? "How well it is kept up. The students are nice. Everything is beautiful...makes being here nice."

Has construction affected you at all? "No, you know its for the better".

What kind of outlook are you bringing to CNU?
"Study, keep up with classes...did it in high school.."

Kristy Caldwell, freshman
Pre-Nursing

versus

Outgoing

What is your impression of CNU? "I want out. I want to get on with my life. I want to make the big bucks everyone has been talking about."

What do you like best about CNU? "The small classes." Concerning friendships he feels that they are more easily attainable because "with less people you see more of the same people everyday."

What will you take with you when you leave CNU?
"Since it is a small school...being able to talk to teachers. They actually know you, you're not just some number in a book."

Has the recent construction affected you in any way?
"Not really. (opinion of order of construction) They needed the dorm first probably before the fountain... could have built the sports and convocation center after the parking...when it gets done it gets done, it doesn't bother me."

Patrick Livingston, senior
CPSC Major

What is your impression of CNU? "I didn't think I'd like it as much because it wasn't a top school. But now I say, yes I go to school at CNU. You can do well academically and the class size is more teacher student oriented."

Has construction affected you at all? "Parking wise, yes. It is good to make CNU stand out. I don't feel like I'm missing out."

What will you take with you? "The teachers in the Psych department. I'd take Dr. Rose with me. He is such a good teacher, I just love him!"

What strikes you most about CNU? "The campus looks great, really nice." Also, "You have to make friends because the campus is small."

Angela Chandler, senior
Psychology Major

See In...p4

Pollard named new English chair

By Jesi Owens,
Staff Writer

Dr. Scott Pollard has a lot on his hands. An English professor at CNU since 1992, he was recently named the newest English Department Chair at the end of last semester, and has been busy preparing all summer.

Since he arrived here eight years ago, Pollard said, "I have noticed significant changes in how we serve the major. There is a more diverse group of students because we now have six concentrations. Since I've come here, the journalism

concentration, under Dr. Terry Lee, has developed significantly, and Dr. Jean Filetti has created a technical writing concentration." Pollard also commented on two newly developed inter-disciplinary minors, a Women and Gender Studies minor co-directed by Dr. Roberta Rosenberg, and a Childhood Studies minor headed by Dr. Kara Keeling. "The English department reaches out to other departments, and other departments reach out to us," Pollard said. He stated that the theater and communications departments require their majors to take a couple

of English classes, and English 205 and 206 may soon be added to the computer engineering curriculum as well, although no plans are final.

As CNU continues to develop academically, the population of future freshmen classes will increase significantly. Currently there are over fifty sections of English 101 being taught, in comparison with only five 200 level English classes. "Basically, if CNU admits more students, we'll need more full-time faculty to teach them. Right now we have twelve

adjuncts teaching 25 sections of English 101. I would like to reduce the reliance on adjuncts and have more full-time faculty," remarked Pollard. He said more full-time professors is the main concern. "Curriculum will continue to evolve as we add more faculty with more specialties." As for the current faculty, Pollard expressed some important goals. His objective is to keep everything together and running. Part of that aim includes events such as this weekend's

See Pollard...p4



Every time a company makes a product, they also use energy and natural resources. Every time you make a purchase, you could save some of that energy and those resources. 'Cause when you buy durable and reusable products, there's less to throw away. And less to replace. For a free shopping guide, please call 1-800-2-RECYCLE.

**BUY SMART.
WASTE LESS.
SAVE MORE.**



Continued from Pollard, p3

department retreat, where Pollard says the focus is "to come to grips with how the English department fits the University's mission, and how we can best serve the University." He wants to support the professional development of the English faculty as teachers and scholars.

Dr. Pollard has several goals for students, as well. He intends to keep the English department a small, friendly atmosphere that is always accessible and ready to meet student needs.

"Part of that," Pollard stated, "is adding concentrations, and being aware of what's going on in the world in order to train our students and make them see that they DO have useful skills. Writing, editing, and thinking skills are essential in the job market, and our majors do well in the job market."

Another aspiration is to keep things running smoothly during the English department's transition from Ferguson to Radcliffe scheduled for next year.

"Hopefully there will be enough space in Radcliffe for the English department, which is already large and looks to be getting larger. I'm concerned that we will have adequate space in Radcliffe for faculty offices and the Writing Center," Pollard said.

Continued from In, p3

What is your impression of CNU? "Everyone is really friendly here. The campus is beautiful. It's like a small community."

Does the recent construction affect you or bother you? "It doesn't bother me. I like it because it is improving the school more."

What strikes you about CNU? "My classes. I love all my classes and the size is great. I have awesome teachers."

**Krysta Wolf, freshman
Psychology Major-**

What is your impression of CNU? "I don't want to leave!! I'm impressed with the concern the English professors have for the individual success of each student. They are willing to help students."

What strikes you most about CNU? "How young the freshmen look! The influx of the more traditional student is a good thing for CNU. Hopefully these students will actively participate in campus life."

What will you take with you? "As a potential teacher, I want to develop the rapport with students I see here at CNU."

Has the construction affected you? "Not really"

Is there anything you'd like to see improved? "I'd like to see required courses offered more than one time slot per semester."

**Imogene Bunch, senior
English Major**

What is your impression of CNU? "I like it. I come from the University of Maryland where you where a number. You get to know the professors here. You create camaraderie"

What strikes you most about CNU? "Friendliness of students and faculty."

Has construction affected you this year? "I don't understand why there is a lot of parking for freshman residents when their dorms are across the way."

What will you take with you when you leave CNU? "The dedication and thoughtfulness of Dr. Gordon and Professor Linda Gordon. They truly put students first. As an English major with plans of one day teaching, I hope to aspire to their level of professionalism."

**Tracy Salmon, senior
English Major**

Drake system shuts down temporarily

By Ramona Hernandez
Contributing Writer

Students and faculty came back to school to find the mainframe server, known as Drake, was not operating. The computer center attributes the crash to power problems that tarnished the data on the central machine. This information was sent to members of the Drake email system, to help with questions dealing with the failure. The system was running completely again by Thursday.

The blackout became an inconvenience for many that could not read their e-mail, put money on their flex or dining accounts, or access the CNU web pages.

"We couldn't do meal plans here," said information desk staff member Tricia Connors. Connors did mention that giving out parking decals and the making of student identification cards was not affected by the Drake failure.

While students were unable to put money in their flex accounts, the staff at Einstein's had no trouble ringing orders or accepting flex

charges. Their computers, however, were offline.

The computers were down in the café so only good old fashioned homework could be done at the tables with books and pencils," said Einstein's manager, Janine Bruner.

The campus web page was also down, as were the many staff and faculty web pages that use the Drake server. The Student Government Association was just one of many organizations that could not advertise its meetings using mass e-mail, where one person or group sends an entire message to all addresses using the server.

Residents in the dorms were also affected by Drake's collapse. Many were unable to access their accounts and lost e-mails sent to their addresses. Students who were kicked off the main listing also had to reapply for email accounts. Members of the residential staff alerted the Computer Center about the problems for residents. Many staff members were pleased with the rapid response from the Center's staff. "They (computer center staff) did an excellent job for us. When

students have problems with their computers, they talk to us and we relay the problem to the center. They worked late hours," said Resident Life staff member, Julie Beckley.

One computer driven aspect of campus that was untouched by the Drake crash was the CNU On-line program. While students could not get in touch with many of their professors, they were still able to get their course information without any problems. Many of the professors found little or no difficulty. "There was not much of an impact. I take it slowly the first week in my online class because I realize that some of the students add late or have technical difficulties of their own when they are starting out. I have not received any feedback from my students as to whether the downtime adversely affected them," said economics professor Michelle Vachris.

Even without the Drake server, the majority of CNU's classes and events were held without incident during the first week of school.



Arts & Entertainment

AMC closes location at Patrick Henry Mall

By Kimberly Wright
Staff Writer

Changes at Patrick Henry Mall have been ongoing throughout the summer - the additions of many new stores and exciting events - but the end of the summer will mark the closing of AMC 7.

Located by the food court, AMC 7 has been in business since November 1988, but has now decided to hold its final showings and close its doors on Thursday, August 31.

According to Rick King, AMC's Senior Vice

President of Corporate Communication, business at the movie theater has become too slow to keep it open. Due

opportunity to transfer to all of its current employees.

Kelly Daspit, Marketing Director of Patrick Henry Mall, said "Business at the theater has been declining for the past several years... although we are

sad to lose the movie theater, we are very excited about the new tenant". Although she could not give the name of this new tenant, she did say that they are expected to open January 1, 2001. In the meantime, the theater space will be rented to temporary tenants or used for special events.

"there is no longer an audience for smaller 'multiplex' theaters"

to the larger "megaplexes", like AMC 24, and their many improvements to the movie watching experience - such as stadium seating and larger screens - there is no longer an audience for smaller "multiplex" theaters, causing them to be unprofitable. King also said that AMC 7 will be offering the

Act One Movie Nights offer up a wide variety during theme weeks

By: Cash Arehart
A&E Editor

Act One's regular Movie Nights takes on a new perspective this year with the advent of theme weeks. Selected movies will be grouped according to content into different categories such as Battle of the Sexes, Blaxploitation, Halloween & Horror, and Political & Election Movies. There is something for every moviegoer, from The Matrix to Dirty Dancing, Shaft to Superfly, Sixth Sense to Hellraiser, and Black sheep to Election.

Each week will witness

four to five movies, which will be shown in various locations around the campus ranging from the Student Center to Anderson Auditorium. Movies usually begin at 8:00pm and there is no admission charge. The Act One sponsored movies offer an appealing diversion from the otherwise dull hours which descend upon the campus along with the evening twilight. Keep an eye out in future weeks for posters and flyers in the Student Center and Residence Halls advertising movie times and locations.

Auditions!

The CNU Theatre Department announces auditions for our Fall Mainstage production:

The Night Thoreau Spent in Jail

(by Lawrence & Lee)

A powerful and witty play that examines Henry-David Thoreau as a young, fiery revolutionary; a principled man of conscience who would rather be imprisoned than support an unjust war.

ALL STUDENTS, FACULTY AND STAFF ARE INVITED TO AUDITION!

Auditions will be held on Tuesday and Wednesday evening (Sep. 5 - 6), from 7:00pm to 9:00pm in the Gaines Theatre (Student Center 169). Scripts are available in the office of the Fine and Performing Arts Department (594-7089).

Random Reviews: Music

Album: Who is Jill Scott?



By Steve Flemming Jr.
Staff Writer

A revolutionary female vocalist makes her bid to take the spotlight, mixing blues, soul, jazz and earthy poetry. Her music drips with a curious blend of spirituality and sensuality sprinkled with consciousness. We've heard this one before, right?

Not necessarily. This time around, the neo-soul diva is Philadelphia's Jill Scott. Following in the footsteps of pre-Y2K female groovers Erykah Badu, Adrianna Evans and N'Dea Davenport, Scott poses a simple question in the title of her stellar debut - "Who is Jill Scott?: Words and Sounds Vol. 1"

Judging from the breezy pace of this 18-song collection (which includes some special bonuses), Scott is a musician with more to say to listeners than the average Beyonce-esque pin-up. Painting a portrait of love and relationships, Scott's lyrics (she co-wrote all of the album's songs) and vocal delivery are refreshingly intimate. Simply put, she commands attention.

Scott is already earning airplay with "Gettin' In The Way," the album's lead single and cornerstone. Over the rumble of a bass and organ, she wards off her female adversary with ease and grace, making it clear she cannot have her man (I been a lady up till now/Don't know how much more I can take/Queen shouldn't swing if you know what I mean/But I'm bout to take my earrings off/Get me some

Vaseline). Though at times it is a little too reminiscent of numbers by Badu, Scott's skillful songwriting makes the song all her own.

Her take on the bright side of love is just as engaging, as is evident on "It's Love," a tight fusion of Go-Go and neo soul, while the beautiful "The Way" sounds like it could have appeared on an Isley Brothers record two decades ago. Using a dramatic orchestration to great effect, the song stands out as one of Scott's best.

The Latin bug has bitten everyone, and Scott plants her seed in the popular style with "One is the Magic #," a tune that encourages learning to rely on yourself. "Watching Me" touches on the universal theme of paranoia. The number

embodies a sample of Roy Ayers' "No Stranger to Love" which provides the perfect backdrop for Scott's volleying spoken verses.

Overall, Scott's debut is strong - full of theatrical peaks and valleys that are empty from a lot of fodder that clogs airwaves. While one could argue that neo soul is no longer a novel concept, "Words and Sounds Vol. 1" is not likely to get lost in the crowd.

So, Who is Jill Scott? A talented artist who just may rise above the monotonous trends of soul music in the year 2000. An artist who proves that there is still music that has a message. An artist with a voice and undeniable talent that cannot be ignored.

"Words and Sounds Vol. 1" is not likely to get lost in the crowd.



Odin, the Allfather



Jesus, the Messiah

3 out of 4 gods cant be wrong.

Odin got it from a goat in Asgard.

Jesus got it from water at Canaan.

Dionysus got it any time, anywhere.

Brahma wasn't interested.

It's alcohol. And whether you take it as mead, wine, or something else, its a blessed drink. So when you drink, drink to enjoy it. Drink to have a good time. Drink to be a better dancer. Alcohol is for Pleasure. Use it often. And of course, if you do drink, drink safely. Let someone else take the chariot reins. Or you will make Odin very angry. And No one wants that.

Not available
for picture

Brahma, Allwise



Dionysus, god of drink

Sponsored by the Board of NMW



cover your butt.
better yet, help cover your
[tuition].

College can mean maneuvering through a lot of different obstacles, but tuition payments shouldn't be one of them. In Army ROTC, you'll have a shot at a scholarship worth thousands. And make friends you can count on. Talk to an Army ROTC advisor today. We've got you covered.



ARMY ROTC Unlike any other college course you can take.

For details call 221-3611/3600
or stop by Room 218 Ferguson Hall

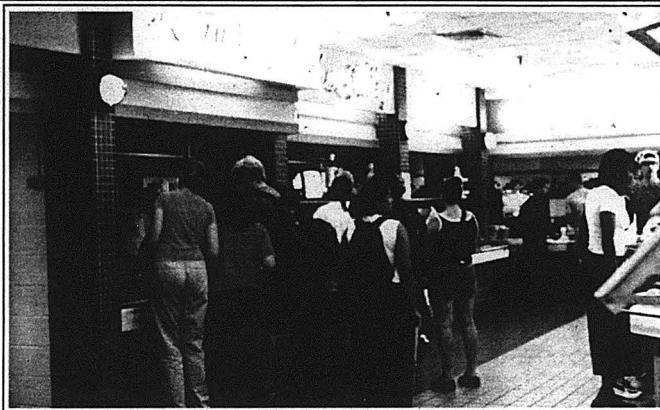
DINING OUT & ABOUT

New discovery for CNU stomachs

By Jesi Owens
Staff Writer

Freshmen and transfer students new to CNU this year have confused looks on their faces. They seem to be saying, "is this a college campus or a construction zone?" Christopher Newport is growing in many ways. There are more students, more buildings, and fewer places to eat? What is going on here? In the past two years, Christopher's cafeteria and the Terrace have met their demise. On the up side, changes to already existing eateries, as well as grandiose plans for future food courts are feeding the stomachs, and inquisitive minds of CNU students and staff. Harbour Lights is back with several new and exciting additions, and CNU Express and Einstein's have also returned. In addition to these old favorites, two new additions are arriving shortly to feed the famished freshmen, sophomores, juniors, and seniors of CNU. The Discovery, located where Terrace used to be, is scheduled for an October grand opening, and the James River Hall Convenience Store should be up and running within two weeks.

Harbour Lights, located directly across from Santoro Residence Hall, is the most obvious and efficient choice for CNU residents. All the old favorites are back, and several exciting and innovative changes have been made to increase the efficiency and decrease the wait for everyone involved in the dining experience. The sandwich and soup stations have returned, as well as the ice cream, salad, and pasta bars. All salad toppings are now on one side of the bar, and the pasta station is newly furnished with a steamer, offering diners the choice of hot or cold. In addition to these familiars, a sauté station is now available on the other side of the salad bar, equipped with chopped fresh vegetables, new spices and flavors, and a cranked up wok, ready and set to sauté your selection. This is good news for freshmen Leigh Ann Farmer and Kevin McKenzie, who are looking for healthier menu selections. Most upper-classmen diners have taken notice of the changes to CNU's most popular cafeteria, and are adequately impressed. However, as sophomore Nathan Haddaway points out, his



Because of a near doubling of Resident Students at CNU lines often form in Harbour Lights, causing patrons to budget eating time wisely.

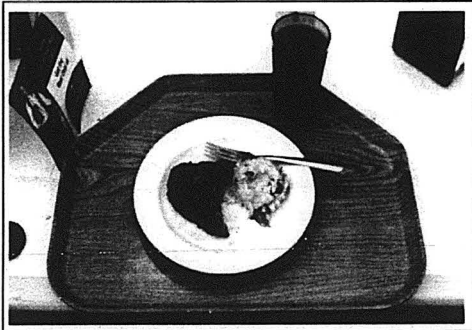
Harbour Lights experience hasn't improved, "because I have no idea how the saute bar works." Office manager Teresa Deal says students with complaints or suggestions as these should take advantage of the suggestion box located by the cash register. Also, now available on a daily basis, vegan entrees for the animal-friendly are an everyday part of the Harbour Lights menu. Vegetarian meals are also usually offered, and Deal says vegetarians are welcome to request veggie patties to be thrown on the grill at any time. The number of students with meal plans has nearly doubled from the 600 last year to presently over 1000. The cafeteria seats only 250. With this

increase, operational hours have also grown. Harbour Lights is now offering continental breakfast from 7:00-7:30 am, breakfast from 7:30-10:00 am, lunch from 11:00 am-2:00 p.m., grill from 2:00-4:30 p.m., and dinner from 4:45-7:30 p.m.

on weekdays. The weekend schedule offers brunch from 11:00 am-1:30 p.m., and dinner from 4:30-6:30 p.m. Executive Chef Roosevelt Smith says that the busiest times are lunch and dinner.

Man cannot live by Harbour Lights alone.

See Discovery...p8



"Man cannot live by Harbor Lights alone."

In my not so, humble opinion by Cash Arehart, A&E Editor



So, I had not even begun to write my column and I had already been cautioned by two people to be careful about what I write. Not even two ordinary people, rather two prominent and intelligent students cautioned me as to be careful when choosing the content of my column. I'm not really sure what to make of this other than to go ahead and offer my observation to you on what I was going to write about anyway (Sorry J & J). In other words I am going too completely ignore the

advice that was thrust upon me and in the words of the great Popeye "I am what I yam". Therefore I must write what I write.

I am a very devout Lutheran, active in my home congregation and the statewide church organization as a youth Minister and Counselor. I sit on the Synod Youth Ministry Committee and attempt to attend church down here as regularly as I can. I am also an Eagle Scout and am still very active with Scouting back

home where I am Lodge Chief for my lodge of the Order of the Arrow, Scouting's National Honor Society. I was raised on a farm by two wonderful parents and grew up in a very caring environment. So what am I building to other than the cure for insomnia?

The fact that I'm bothered when I see posters and flyers up on the campus advertising "Solutions For: Sexual Brokenness..." and other very Christian points of view thrown at me like a common Television Evangelist preaching to ignorant trailer park resi-

dents at two am on the cable access channel. It's not only in advertisements that I see up around the campus either. I see and hear about it in classes and presentations all over. I thought I was going to be attending a Liberal Arts University to educate and expand myself and I find myself in a Conservative Arts University being bombarded by the ideals which I grew up with yet, am now growing weary and sick of seeing constantly.

Perhaps this wouldn't happen if there was the other side of the issue. One thinks to themselves "well, there must be another side". Well, where is it? I am forever seeing evidence of the existence

of a Baptist Student Union and a Catholic Campus Ministries. Where is the Gay, Lesbian, and Straight Student Union? What about an organization celebrating different religions, not just Christian religions either.

And if this article is offending you right now, good. It proves that you've arrived in college and need to grow some thicker skin. Some people in this world will have opinions different from those of your own. It is ones duty as a member of humanity to remain open and receptive to new ideas and beliefs. It's called learning and it's a part of being a member society. So get used to it.

Continued from **Discovery**, p7

Fear not young freshmen, for the food is on the way. These two eateries may be gone, but a Discovery is being made. Currently in the Student Center, where Christopher's used to be, lives Gemille's Burger. Named after long-time CNU Dining Services employee, Gemille Williams, this cafeteria offers an array of treats she cooks up especially for us, ranging from chicken and burgers, to salads and wraps. According to Kevin Ososkie, Food Operations Manager, "Gemille's Burger is a dress rehearsal for the opening of the Discovery."

And what an opening it will be. Scheduled to open in October, although no official date has been set, the Discovery will include four choices for CNU students, satisfying any craving one might have. Transfer student Bobby Lawrence, who previously attended Virginia Tech and ODU, noticed the absence of fast-food places at CNU and "is really looking forward to Discovery's opening in October." Along with Gemille's Subs and Grille, Discovery will also include Stone Willy's, Grab-n-Go, and Chick-Fil-A Express. Gemille's Subs and Grille will continue serving up the scrumptious goodies delivered by Gemille's Burger, surely a pleasing thought to all who missed her breakfasts, burgers, and good humor last year. Stone Willy's Pizza intends to tantalize CNU's taste buds with an assortment of pepperonis, anchovies, or green peppers atop cheese-soaked pies. Grab-n-Go will specialize in the faster foods currently available at Gemille's Burger, such as wraps and salads. Of course, the highlight for many hungry bellies will be the addition of Chick-Fil-A Express. Starting out with the basic Chick-Fil-A menu, it will not offer certain favorites such as chicken-strips, nor will it be open on Sundays. However, according to

Ososkie, more menu items will be available when the Chick-Fil-A authorities "are comfortable that we are comfortable." Five Christopher Newport staffers, going down the food chain from management to student employees, went through a weeklong training program at the Chesapeake Chick-Fil-A. Chesapeake is also providing a consultant for CNU, and will have workers available for the October grand opening, to ensure smooth sailing and faster lines. When opened, hours are intended to be the same as always. Monday through Friday from 7:30 am-10:30 p.m., and weekends from 5:00 pm-11:00 p.m. Discovery will deliver and will accept flex points, dining points, and cash.

For many students here at CNU, there is little time for sitting down for a cafeteria meal. Einstein's in the

Captain John Smith Library, CNU Express in Ferguson Hall, and the new James River Hall Convenience Store are all alternatives for busy students. Einstein's offers Starbucks coffee, sugary pastries, and a classy atmosphere in which to study, and is open Monday-Friday from 8:00am-12:00 midnight, Saturdays from 9:00am-12:00 midnight, and Sundays from 1:00 pm-12:00 midnight. Assistant manager Sharon Coltrane encourages students to come in for a phosphate soda, milkshake, and the Wednesday gourmet chicken salad. Junk food junkies are also satisfied by CNU Express, which satisfies 700 students with a sweet tooth every day. Express accepts cash, dining, and flex points, and is open Monday-Thursday from 7:45am-8:30 pm, Fridays from 7:45am-3:00pm, and is closed all weekend. Accompanying

the new dorm, the James River Hall Convenience Store is almost completed. Based on 7-11, it is intended for the safety and convenience of James River Hall residents, although every one is allowed and welcome. When fully stocked, the store will be open from 7:30am-2:00am seven days a week. Jacquelyn Eley, supervisor, says things should be stocked, and up and running by the end of next week.

So there you have it, stomachs of CNU. Anything your belly growls for, this campus intends to provide. Check out the eateries on campus, and leave comments in the suggestion boxes. CNU is growing, and what better way to add to the atmosphere than a diverse and pleasing menu selection?



Domino's Pizza



Since we know you're working hard...
Let us provide a study break that
Takes care of your **HUNGER**
AND your **WALLET!**

Proudly Serving:
**CHRISTOPHER NEWPORT
UNIVERSITY**
595-3030

\$5.99

Any Medium One
Topping Pizza



Offer Expires: 12/31/00
Deep Dish Extra

Offer valid with current Student ID.
Coupon not valid with any other
offer. Valid at participating stores
only. Customer pays sales tax
where applicable.

501

\$6.99

Any Large One
Topping Pizza



Offer Expires: 12/31/00
Deep Dish Extra

Offer valid with current Student ID.
Coupon not valid with any other
offer. Valid at participating stores
only. Customer pays sales tax
where applicable.

505

\$9.99

Any Two Medium One
Topping Pizzas



Offer Expires: 12/31/00
Deep Dish Extra

Offer valid with current Student ID.
Coupon not valid with any other
offer. Valid at participating stores
only. Customer pays sales tax
where applicable.

519

SPORTS

Daddy says "Write a sports column"

By Mike Mullin,
Sports Editor



As I child, I must admit that writing a sports column for a college newspaper was never exactly what I imagined myself doing. No child ever says, "Daddy, instead of being a big fireman like Bobby, I want to be a gangly white reporter. I don't want to play sports I want to sit in front of a computer and write about them." At least no normal child would say that.

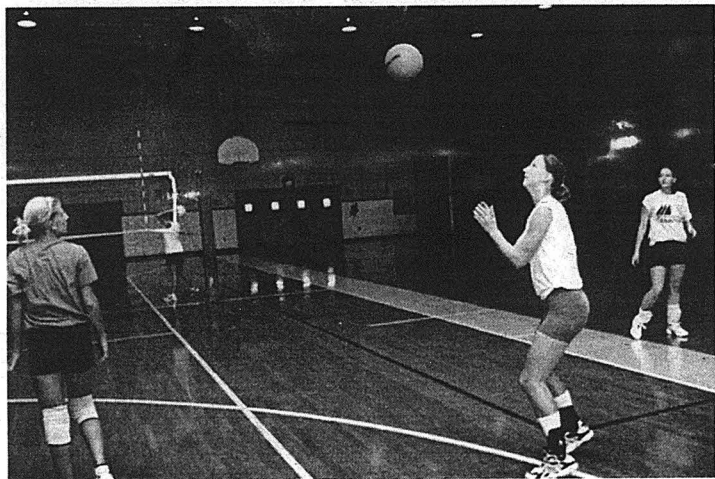
As a way of further explaining myself to you, the reader, I will tell you a bit about myself. I am a freshman English major with a minor in teaching and hope to graduate in the spring of 2004. I am very excited about being the sports editor this year at The Captain's Log. I hope that here I will be able to relive all of the past sports glories that I never had.

I am not a good athlete. Sports and I do not get along well. Whenever Sports and I get together, Sports always seems to push me down and take my lunch money. When I was three years old, a baseball broke my nose for the first time. I threw the ball up in the air to hit it and it didn't come down quick enough for me. So, like any non-athlete, I looked up to see where the ball went. Ball connected with face a little too fast for my nose to handle.

I am thankful that CNU's athletics are not in anyway as bad as mine. A matter of fact, the level of quality athletes here at CNU is astounding. The men's soccer team was recently ranked 13th in the nation in a national poll of college soccer coaches; recent graduate Casey Taylor was named NCAA Woman of the Year for Virginia; and CNU is the Dixie Conference President's Cup Champions for the third straight year.

CNU sports also has a battery of new coaches this year. CNU graduate John Harvell has just been named the new baseball coach and director for intramurals and Rob Lussenhop as the new golf coach, just to name a few.

The most important thing about sports here at CNU and sporting in general is to have fun. In the coming week all of the fall sports teams will begin to compete. Everyone should go out to see them. The only way to have fun with sports if you are not competing is to go and see others compete. These four years while you are in college will be the only time you will have in your life to paint your face, cheer, and make a complete fool out of yourself without having people look at you funny. Because of this I hope to see everyone out cheering on the Captain's at every game. I will be there and I don't want to be the only person with a blue painted face.



Junior Oksana Boukhitina (pictured above) returns this year after last years spectacular season.

CNU volleyball team ready to go all the way

By John Bailey,
Staff Writer

To say the Ladies of the CNU volleyball team are confident would be a gross understatement. This year's team is not only ready to get the season started, but they are prepared to start off with the same momentum they ended with last year, winning 20 games and making it to the semi-finals of the Dixie conference championships.

The return of the team's three major weapons, senior Heather Vaden, junior Oksana Boukhitina and junior Lindsay Sheppard is one reason for head coach Ken Shibuya's optimism. However, this year's team has more going for it than just standout individual talent.

In 1998 the team was still learning what it took to go all the way in the conference, Shibuya said. "The main group from 1998 came back in 1999 realizing they were talented, but weren't certain about beating more experienced teams."

However, win after win in the '99 season gave the Lady Captains what they needed, faith in themselves. "It was clear by the end of last year, that all our hard work in '98 paid off," Shibuya said. "It was that experience combined with the players new confidence in each other that got us on a roll in 1999."

The Captains' improvement on offense has been night and day over the last three years and should only improve this season. Vaden is poised to break the Kill record for CNU, Boukhitina has another shot at a 1st-team All-Dixie spot this year and Sheppard should have a breakout season as well.

"We are a little shy in experience in the 2nd mid-hitter and outside hitter positions," Shibuya said. "But we have a strong starting six, so we should be fine."

How CNU does against conference powerhouses, Averett and Greensboro College, early in the season will determine how well the team will truly do this year. It was Greensboro that beat the Lady Captains in the Dixie semi-finals last year, and

See Volleyball p 10

**Field
Hockey**
First Time Ever
page 10

**The Sports and
Convocation
Center**
When will it
open?
page 11

Head Coach: Nancy Billger

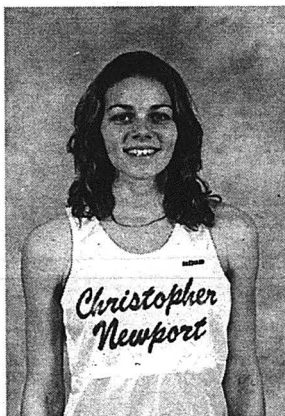
TAYLOR NAMED NCAA WOMAN OF THE YEAR FOR VIRGINIA

CNU Sports Information
INDIANAPOLIS, Ind. —

Former track star Casey Taylor has earned yet another honor, one of the top in her growing list of accomplishments. She has been named the NCAA Woman of the Year for Virginia.

The 19-time All-American and two-time national champion was chosen from among all female athletes in Virginia, regardless of division. She is one of 51 state finalists. The NCAA will choose ten national finalists in September and then announce the national winner at the NCAA Woman of the Year Banquet in Indianapolis on Oct. 15. Taylor will attend the banquet with all of the state winners.

Featured speakers at the banquet will be Robin Rober and Giselle Fernandez.



Casey Taylor (pictured above) rose above all other women athletes in Virginia to become NCAA Woman of the Year.

The award is one of many earned by Taylor this year. Among the others were an NCAA Post Graduate Scholarship, national Division III Indoor and Outdoor Athlete of the Year and selection as a national GTE/CoSIDA Academic All-American.

Taylor graduated from CNU in May and will begin graduate studies this semester at Brooklyn College in New York. In addition she was selected to work as an intern in the Sports Information Office at Columbia University.



The convocation center's north face still remains to be finished.

Convocation Center Update

Should be ready by Oct. 1st

By John Bailey,
Staff Writer

CNU's new Sports and Convocation center is behind schedule but still expected to be a premier sports facility when completed.

We hope to be in it by the first of October," CNU athletic director C.J. Woollum said. "It's obviously late, but that is the nature of construction."

Woollum points to excessive weather during the summer, interfering with the construction schedule, as the main reason for the delay.

However, he feels that the facility will be worth the wait.

The 10,000 square foot 16 million dollar sports center will house CNU's current athletic teams, the new women's lacrosse and field hockey teams in 2001.

The delay does keep CNU's volleyball team from opening their season in the new facility.

"I feel badly for our volleyball team," Woollum said. "They have to open their season in the Ferguson gym, but we've made several improvements to make it more tolerable."

The gym had been used heavily for practices by many of the other sports teams, leaving it in rough condition. However, fans can expect to see refinished floors and renovated bleachers. New sleeves for the volleyball court were installed and a portable P.A. and part of the scoreboard in Ratcliffe were moved to Ferguson.

Woollum does expect the volleyball team to finish off their season in the new sports center.

The center's official name should be released within a month.

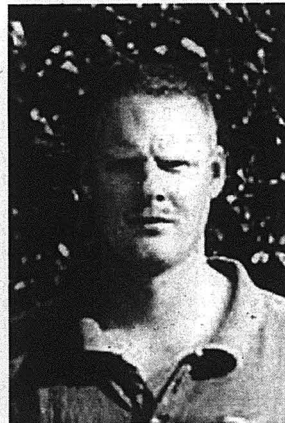
Harvell takes over CNU Baseball

CNU Sports Information

NEWPORT NEWS, Va. - Christopher Newport University Director of Athletics C.J. Woollum today announced the hiring of John Harvell as the school's new baseball coach and director of intramurals. Harvell is a 1991 graduate of Christopher Newport and former member of CNU's baseball and basketball programs.

"It's a great pleasure to welcome John Harvell back to Christopher Newport," Woollum said. "I had the privilege of coaching John and he was a credit to the University as a student-athlete. I feel our baseball and intramural programs are in very good hands."

Harvell returns to CNU follow-



New Baseball coach John Harvell.

ing a very successful four-year stint as the inaugural baseball coach at Woodside High School in Newport News. His teams went 62-25 overall

and Harvell was honored as both regional and state baseball coach of the year in 1998.

"Having the opportunity to come back and coach at Christopher Newport is the ultimate compliment," Harvell said. "Just as players have to step up their level of play going from high school to college, I know I will also have to step up my coaching."

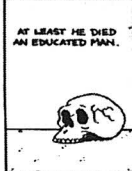
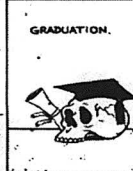
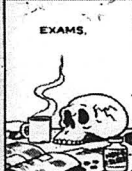
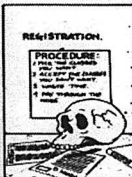
Since earning a Bachelor of Science degree in Education from CNU in 1991, Harvell has been employed by the Newport News Public School System. He has served as a physical education teacher at Woodside High School, Huntington Middle School, and Denbigh High School.

Harvell succeeds Curt Long, who guided the CNU baseball squad the last seven years.

COMICS & CLASSIFIEDS

THE
ADVENTURES
OF
SKULY
BY
WILLIAM
MORTON

SKULY
GOES
TO
COLLEGE



00



David "Cash" Arnhart



Robyn Charles

They are... Why aren't you?

Cash and Robyn are both senators for the Student Government Association. Their voice makes a difference in deciding pertinent issues relevant to campus life. SGA meetings are held every Wed. at 4p.m in McMurran 102.

Isn't it time that your voice is heard? Stop by SC 225 for more details.

Student Government 1200-1201: Facilitating Growth through Governance

Attention all Business Majors!! The Captain's Log is accepting applications for the Business Manager position. Either come by Student Center 223 to fill out an application or contact us at 594-7196.

Rugby players needed for upcoming season. Practice Tue. and Thurs. 7pm to 9pm. Contact Marty Edrich 587-9383 or Email: scrumbag69@yahoo.com

Wanted! Spring Breakers! Cancun, Bahamas, Florida, & Jamaica. Call Sun Coast Vacations for a free brochure and ask how you can organize a small group & Eat, Drink, Travel Free & Earn Cash! Call 1-888-777-4642 or Email: sales@suncoastvacations.com

The Shoebox Follies will be holding auditions for it September show soon and anyone with a talent, or even the lack thereof is encouraged to attend, please talk to the people in charge of this event as soon as they figure who they really are.

At this time you might be asking yourself...

What the heck are the Tape-A-Quarters?!

Tape-a-Quarters serve a number of purposes. Slap a 25 cent piece on that little form

you see at the bottom right-hand corner of the page and fill it up with whatever information you wish.

Perhaps you want to send message to a friend (silly, serious, unintelligible, whatever). Got someone special? Let them know how much you care in a Tape-a-Quarter.

Maybe you've got a bone to pick with someone and want to air it in public (though try not to be too offensive or vulgar).

If you've got something you want to sell or buy, your seeking a roommate or tutor or simply need to get a message out to the general campus population, you can run an ad in a Tape-a-Quarter.

Or just fill the form up with whatever silly nonsense, gibberish, quotes or deep thoughts might strike you as important.

In other words, just about anything goes (for the official, break-these-rules-and-risk-imprisonment rules, consult the two columns on your right.)

Place the form in the Captain's Log's Tape-a-Quarter box in the Student Center (next to the copy machine) and we'll print your message in the next issue.

Get your Tape-A-Quarter in the Next Captain's Log

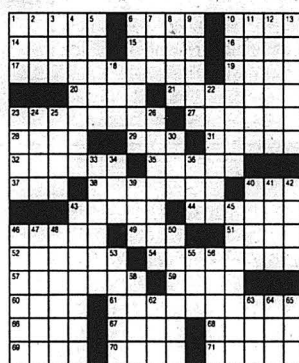
Tape-A-Quarter Classifieds are for students, faculty, staff and members of the alumni society only. Simply write your ad and tape a quarter to it.

• Rates are \$0.25 per ad for six (6) lines or 60 words, whichever is less. Ads exceeding six lines will not be run.

• All ads are run in one issue only. For multiple runs call MS. CLASSIFIED (594-7196) for further information.

Crossword

ACROSS
1 Box in
6 Assist in
wrongdoing
10 Teases
14 Take it easy
15 John Doe's dog?
16 French fashion
magazine
17 Capsized
19 Rigging support
20 Winter Morrison
21 Nil
23 Roman church
27 Spirit-raising
occasion?
28 Shortly
29 Actress Jillian
31 Fencing foils
32 Struggle
35 Sample
37 Understand
38 Extensively
40 King topper
43 Enticed
44 Jaundiced
46 Up and about
49 African envelope
51 Assistant
52 Stop flowing
54 Sparkling
57 Operations
specialist
59 Recent
60 Advantage
61 Purification
plants
66 Amphitheater
67 Blue or White
river
68 Wetlands
69 Drunkards
70 Disparaging
remark
71 List of candidates



© 2000 Tribune Media Services, Inc.
All rights reserved.

9/5/00

Solutions

1	2	3	4	5	6	7	8	9	10	11	12	13
14												
17												
20												
23												
26												
29												
32												
35												
38												
41												
44												
47												
50												
53												
56												
59												
62												
65												
68												
71												

8 Adam's garden
9 Fussess
10 Form again
11 Mountainous
12 Quick look
13 Twisted fabrics
18 Cycle lead-in
22 Cut choppers
23 Operatic voice
24 Pot feeder
25 Tender
26 Insect's feeler
30 Doze
33 Intense
34 Final one
36 Porker's pad
39 Follow
persistently
40 Landed
41 Collection of
rules
42 Water pitcher
43 Slays a little
longer
45 Side-to-side
46 Useful qualities
47 Recording room

48 Bull's-eye
50 More unattractive
53 Trumpets
55 Multi-computer
styl.
56 Account entries
58 One Diamond
62 Contagious
malady, briefly
63 Gershwin or
Levin
64 Winter hrs. in
Boston
65 That woman

• DO NOT bring Tape-A-Quarter ads to our office.

• Tape-A-Quarter ads are published on a space available basis. Those ads which are not published because of space constraints will be published in the next issue.

• The Captain's Log is not responsible for lost, misdirected or late Tape-A-Quarter ads.

DEADLINE for all Tape-A-Quarter Classifieds is NOON on Wednesday the week preceding publication. Publication dates are available upon request. For more information about our classifieds, call Mr. Classified.

official tape-a-quarter form

THE
CAPTAIN'S LOG

tape
quarters
here

name, phone number and today's date (required)

print message below. do not exceed six lines
