

THE CAPTAIN'S LOG

VOLUME 24 NUMBER 19

CHRISTOPHER NEWPORT UNIVERSITY NEWPORT NEWS, VA

February 22, 1993

NEWS

Dorms

W. M. Jordan Construction Company has taken precautions against erosion during the recent heavy rains.

Story Page 5.



ARTS

Picnic

The CNU Theatre Department will present a William Inge's play beginning on February 26.

Story page 4.

OPINIONS

National Lottery

Mandatory taxes, which divide and alienate people, could be replaced with a national lottery to pay off the deficit.

Story Page 2

SPORTS

Women's Basketball

Senior Lisa Molineaux has played a key role for the Lady Captains this season.

Story Page 8



CNU increases recruitment

Admissions focuses out-of-state efforts from Maryland to Connecticut

By Jennifer Jordan
Staff Writer

In an effort to increase out-of-state student enrollment at Christopher Newport University, admissions officers to eight college fairs, from Virginia to Connecticut, over the next 18 months.

The opening of CNU's residence hall in the fall of 1994 will provide the college with the opportunity to offer on-campus housing. This will make attendance at CNU easier for students who do not live in the immediate area. Currently, out-of-state students, comprise about 12 percent of the student population, according to Keith F. McLoughland, dean of admissions.

To promote the new accessibility of CNU to out-of-state students, McLoughland and three other admissions officers will be attending the college fairs.

College fairs are generally aimed at high school juniors. Admissions officers from colleges and universities are present at the fairs to promote interest and enrollment at their respective institutions.

One fair which CNU admissions officers will be attending take's place at Madison Square Garden in New York. According to McLoughland, the fair usually attracts 18,000 students and involves five hundred colleges and universities.

McLoughland discussed how the department chose which of the college fairs it will attend. He said that the number of students attending is not the only determining factor.

He said that another factor is whether or not the state in which the fair is being held is traditionally an "importer" or "exporter" of college students.

For example, McLoughland mentioned that a fair held in Pittsburgh, Pennsylvania, will attract about 12,000 students. However, he said, "Pennsylvania has never sent many students out."

McLoughland said that the department has targeted visits to fairs in areas where "tuition and fees are so high that CNU will represent a real

bargain."

Admissions officers recently took what McLoughland called "test trips" to see if there was an interest in CNU from students outside of the Peninsula. They travelled to areas such as Richmond and Fredericksburg during the test trips.

According to McLoughland, they determined that an interest in CNU does exist.

Carol A Saffo, assistant director of Admissions, said that the level of interest was judged in different ways. Saffo said that the number of students who filled out forms to inquire for more information about CNU was one indicator of interest levels.

She added that "the types of questions [students asked] give a good indication" of their interest.

Because the response to the test trips was positive, admissions officers hope to generate similar interest at the college fairs. But, McLoughland said, "we're not interested in filling the [residence hall] with out-of-state students."

Saffo said that the benefit of having more out-of-state students at CNU is that their presence "adds a different perspective...[and] a different flavor to campus life as well as in the classroom."

New Board member appointed

By Diane L. Seymore
News Editor

The president of Newport News Shipbuilding, W.R. "Pat" Phillips Jr., was appointed to Christopher Newport University's Board of Visitors on January 28, 1993.

Gov. Douglas L. Wilder appointed Phillips to the college governing body for a term to last through June 30, 1994.

Phillips is a West Point native who was made shipyard president January 1, 1992. According to Daily Press reports, Phillips began working at the shipyard June 28, 1949, as an apprentice machinist.

Phillips was born February 23, 1931. He earned a Bachelor of Science degree from Virginia Polytechnic Institute and State University. He has also done graduate work in business

management at George Washington University. In addition, he graduated from Harvard Business School's advanced management program.

He and his wife Marian, have two children.

Dr. Anthony R. Santoro, president of CNU, said "[Phillips] is wonderful...he knows the area very well. We have been very lucky to have a person [on the board] from the Newport News Shipbuilding ever since CNC was [in existence]."

"We've been very lucky," said Dr. Santoro about Phillips appointment. "He is committed to the College of Science and Technology."

"We couldn't be happier," adds Dr. Santoro. "It will be wonderful for the university to have a president of the Newport News Shipbuilding."

Phillips was not available for comment.

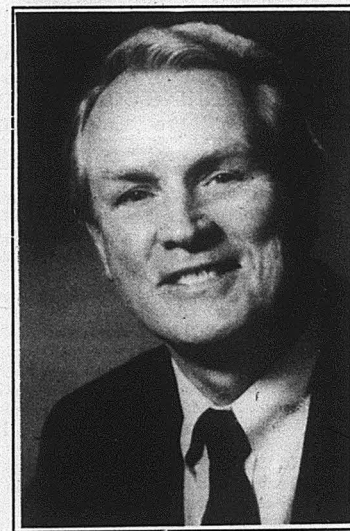


Photo Courtesy of NNS
W.R. "Pat" Phillips the new Board of Visitor for CNU.

Issue of the Week

Reducing guns in schools

From the Left

From the Right

By Jared Thornton, (J.T.)

The recent expulsion of the Hampton student who brought a weapon into the school reopens the debate which has been going on for some time.

What we need is to educate the kids on how to mediate their disputes. Everything they see now, ranging from cartoons to feature films, show that it is macho to resolve disputes through violence. Education will avert this problem.

Next we need to make the schoolhouse not look like the jailhouse. The learning environment must be free from distractions, bars, metal detectors and too many armed guards.

education is the major key to resolving this dilemma. We need to support our teachers and help do our part for the betterment of our kids.

By Steve Siceloff

Believe it or not, a democrat had a good idea this past week. Senate Majority Leader George Mitchell proposed a law that would expel a student from school for a year for bringing a gun onto school grounds.

As correct as this bill is, it nonetheless fell to abuse from liberals. They say it is unfair to punish minors for breaking laws, no matter what the laws are.

As much as liberals hate to admit it, discipline is necessary in a society and discipline involves punishment. How can we teach our children reading and writing without instilling a value system in them? Until we begin instilling proper values, we should not feign surprise when students score low on tests and teachers become harder to find.

We need to deal with problem cases severely to prevent them from adversely affecting honest children. The first step in this direction is to pass Mitchell's bill.

THE CAPTAIN'S LOG

ROBBY HIPPS

Editor-in-Chief

LORI COX

Advertising Director

KEITH HASSAN

Photography Editor

DIANE SEYMORE

News Editor

JOYCE KUSTER

Copy Editor

CHANNING COLE

Proofreader

KATHERINE HILL

Managing Editor

TIM WATTS

Account Executive

STEVE SICELOFF

Opinions Editor

NANCY MERRIMAN

Sports Editor

JESSICA MARILLA

Arts Editor

JEROME ZUKOSKY, Advisor

THE CAPTAIN'S LOG, the official student newspaper at Christopher Newport University, is published each Monday during the academic year, except holidays and final examination periods by Byerly Publications.

News contributions are accepted by telephone (804-594-7196) or at THE CAPTAIN'S LOG office (Room 223 of the Campus Center).

Circulation inquiries and advertising rates are available upon request by telephone or mail.

THE CAPTAIN'S LOG welcomes letters from its readers. Send to: The Captain's Log, Christopher Newport University, 50 Shoe Lane, Newport News, Virginia 23606. They may also be brought to our office or left in our mailbox on the second floor of the Campus Center. Please sign the letter and provide full address and telephone number for verification purposes. Students: Please indicate your class status. If the writer is affiliated with an organization, that may be noted.

THE CAPTAIN'S LOG reserves the right to edit letters according to style, subject and length, as well as refuse publication. Letters will be printed anonymously upon request.

Corrections to THE CAPTAIN'S LOG will be published in the issue following the error.

Lottery is better solution

Voluntary taxes are less divisive and alienating

By Steve Siceloff
Opinions Editor

When America first started out, she had a debt to pay to cover the costs of the American Revolution. The Founding Fathers held a lottery with the proceeds going to pay off the debt.

Today, America again faces a debt, but Bill Clinton isn't thinking of using something so simple as voluntary taxes to resolve it—he wants mandatory taxes to pay off the debt.

Relax though, for this isn't another article pointing out the truth about Bill Clinton, I am only providing a context to the story.

The taxes Clinton wants to raise on everyone this year, according to Congressional sources, amount to \$36 billion in new revenue, and the cuts add up to \$2 billion for a total savings of \$38 billion.

But mandatory "broad-based contributions," as the

Clinton White House so affectionately refers to taxes, tend to alienate and divide people, and no nation has ever prospered through higher taxes. Taxes drive down business, discourage workers and bring down economies.

Therefore, the nation should move to a tax plan that makes people want to pay, want to contribute to reducing the debt. The plan that our government should adopt is a national lottery. For the cost of a dollar, a citizen could have a chance to win \$10 million or more every day.

America's coffers could recover well over \$38 billion in a year without resorting to mandatory taxes. With a country of between 250 and 265 million people, only 100 million need to plunk down a dollar each day to match the \$36 billion offered by Clinton's new taxes. If 125 million buy the tickets, then \$45 billion can find its way into the Treasury.

A grand total of \$50 billion could be raised if a mere 140 million purchased a ticket. This increase, coupled with spending cuts, could reduce the deficit before Clinton leaves office in 1996.

Some will, of course, oppose this plan saying that it hurts the poor because they will spend money they can't afford to spend to buy a chance at big money.

Well, that energy tax of Bill's hurts the poor and middle class too, but at least the lottery tax can lead to better things for the taxpayers. Indeed, pulling someone out of the middle class with a \$10 million jackpot seems to hold enough justification for the program in itself.

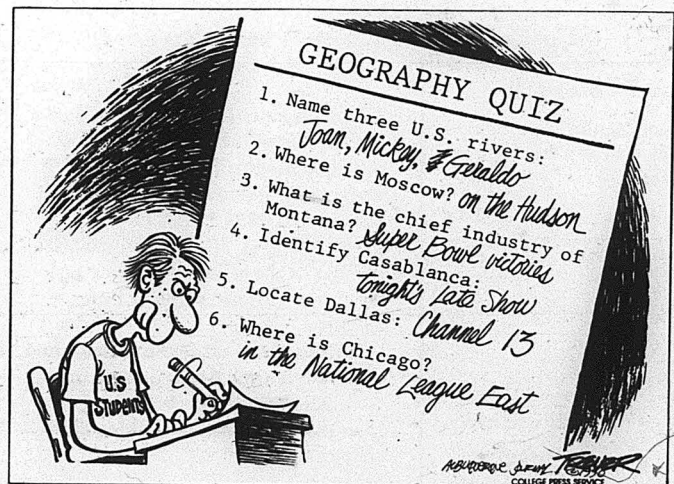
Other who oppose the lottery for religious reasons can rest easy because they don't have to voluntarily contribute to the lottery if they don't want to.

As Virginia and other states show, people are more than happy to give a few dollars a week to get a chance at a mega sum of money.

Consider a person whom I know who lives in North Carolina. Since North Carolina has no lottery, this person pumps money into Virginia's lottery whenever he is up here. Rarely does he win, but he buys tickets every day that he is in the state.

As long as the money goes exclusively to debt reduction and other spending cuts are enacted, then America should take advantage of this present willingness to give to lotteries so as to reduce the debt and avoid further class alienation and division.

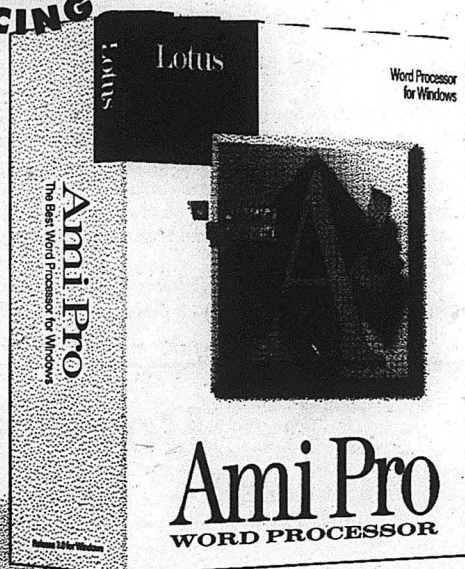
The Meaning of Life



Create picture perfect documents!

**SPECIAL EDUCATIONAL
PRICING!**

FREE
Kodak
FunTime 35
Camera*



UP TO
80%
OFF
commercial
price

With AmiPro you can create better-looking documents than ever, whether you produce basic letters and memos or complex documents with charts and graphics. AmiPro's unique, Windows-based word processing software puts a world of creative power right at your fingertips. With an innovative design based on extensive usability testing, AmiPro 3.0 gives you fast, direct access to all the word processing tools you want—outlining, tables, drawing, charting, equations, revision marking, a full macro language, and more!

No word processor is easier to learn or use than AmiPro. An on-line, QuickStart tutorial will get you up to speed fast. Colorful SmartIcons™ make it a breeze to access your most frequently used functions with just a single click. The Drag-and-Drop and Fast Format features make it easy to manipulate and format text right on screen. AmiPro has all the powerful word processing tools you want— Plus, for a limited time, you can create perfect pictures with the free Kodak FunTime 35 camera you'll receive when purchasing AmiPro 3.0.

AmiPro features include:

- Direct access to tools
- QuickStart tutorial
- On screen text manipulation and formatting
- Powerful tools—outlining, tables, drawing and more!

MSERP

\$99.00

See the Bookstore to Special Order your copy today!
(Available to Students, Faculty, and Staff only)

*Limited quantities available.

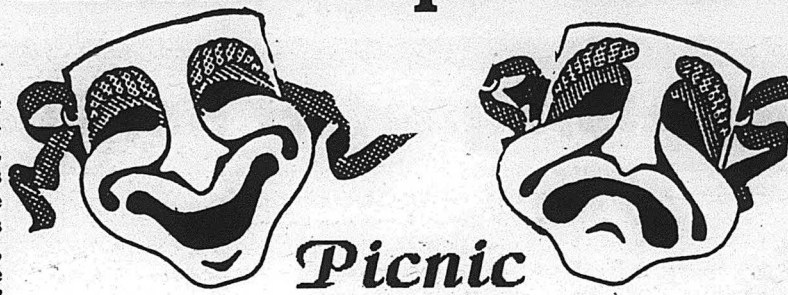
The CNU Theatre Department Presents

By Dr. Bruno Koch
Contributing writer

William Inge's *Picnic* deals with the lot of five women whose lives are invaded by a handsome vagrant. *Picnic*, according to the playwright, reflects his memories of women in his home state of Kansas, which he describes as "beautiful, bitter, harsh, loving, young, old, frustrated, happy--sitting on the front porch on a summer evening." These fond recollections present themselves in the play as Madge, the prettiest girl in town, gracefully feminine yet unsure if that is all there is to life.

There is Millie, her younger sister, plain but highly intelligent. She dreams about the great novel she intends to write some day in New York City. Flo, the mother, left her husband because she could not accept the standard of living he provided. Ambition drives her to urge the marriage of Madge to a wealthy, young man in town, mistakenly using the lives of her children to compensate for her own.

Rosemary, a teacher and boarder at Flo's house, is frustrated and rapidly approaching middle age. Neglect of



Dates:

February 26 & 27

March 5 & 6

Times:

Evening: 8:00 p.m.

Matinee: 2:30 p.m.

in the John W. Gaines Theatre

the needs of her own heart in years past has brought her face to face with the terrifying prospect of loneliness. In desperation, she forces her gentleman friend and small-town merchant, Howard, into a sudden marriage. Mrs. Potts, finally, is the lovable neighbor whose marriage was thwarted by a possessive mother.

Into this midst Inge introduces Hall, who has his share of conflicts and insecurities. The intensely provocative nature of his character stirs powerful attractions and repulsions from the women that represent the core of the play.

The play, nevertheless, invites some considerations that go beyond a mere

empathic portrait of five women. The undercurrent of male dominance resonates throughout the play. The relative powerlessness of women shows in the subtle restrictions that afflict the lives of Flo and Mrs. Potts.

The feared specter of spinsterhood looms large in the future of Rosemary, and only a humiliating act of despair, prevents her from being doomed to a life of delicate yet stinging ostracism.

Madge is content with an existence that holds little more than punching the keys of a cash register in a dime store.

The only exception is Millie who is stridently independent and vows that she will never bother with falling in love. In a norm-driven environment, she projects the early traits of an emerging feminism.

Even with the many advances since the early 1950's, discrimination, stereotyping and lingering traditional sex roles still permeate our present culture.

While clearly echoing an earlier, perhaps less turbulent time, *Picnic* still deals with socio-economic issues that needs our attention even at the threshold of the twenty-first century.

Senior Art Exhibit

By Debbie Green
Contributing writer

Twenty graduating seniors in studio art will be showing their works in the Annual Senior Art Exhibition at the Falk Gallery from Feb. 24 to March 17.

Presenters Angel Abbott and Becky Deaux are very excited as their first exhibition approaches.

"It's probably the only publicly artistic thing I'll ever do in my life," says Abbott, who plans to teach art in elementary school.

Deaux, on the other hand, plans to pursue her art full time and teach as a back up.

Both Abbott and Deaux are military wives and will be leaving the area upon graduation.

Abbott will be moving to Mississippi where she plans to finish requirements for her teaching certification, if necessary.

Deaux will be moving to Korea where she will pursue her masters degree.

Deaux said that she is looking forward to learning about Korean art and culture.

Abbott said that she hopes the exhibit will get across the students' ideas and showcase the talent coming out of the Christopher Newport University Fine Arts department. A housewife and a mother of two, Angel is proud to be a part of the exhibit.

Students could submit a maximum of five works, but only those works chosen by the art department faculty will be exhibited.

According to Abbott, decisions on which works will be exhibited were based upon available gallery space, sizes of individual works and themes.

The opening reception for the Annual Senior Art Exhibition will be held on Feb. 24 from 6:00 p.m. to 8:30 p.m. at the Falk Gallery. The CNU Jazz Trio will provide music.

The Falk Gallery is open Monday through Friday from 11 a.m. to 1 p.m. For additional information, call the Falk Gallery at 594 - 7552.

The Boxed Life

By S.A. Cosby
Staff Writer

Henry Rollins is probably best known as the lead singer of the defunct neo-punk band, *Black Flag* or as leader of the *Rollins' Band*, but recently he has issued a "spoken word" compilation entitled *The Boxed Life*.

The Boxed Life is an interesting grab bag of thoughts, serious and humorous, about life. Most of the pieces spring from events in Rollins' life. *Bone Tired*, the first selection is an excellent example of this technique. It is mainly Rollins recalling the perils of traveling for tours and being deprived of much needed sleep.

Human strengths and weaknesses are two recurring themes carried through out this collection. Rollins calls himself a hater of weakness and all the things weakness brings. In *Strength*,

Rollins relates the story of his early teen years and a job he had at an animal testing lab.

Not all of the segments in *The Boxed Life* are down and depressing. In the piece called *Hating Someone's Guts pt.2* Rollins gives a good-natured jest to folk/pop singer Edie Brickell.

The selection called *Condoms* is a

funny selection about the new sexual courtesies that have arisen with the increased and necessary use of condoms.

There is much more to *The Boxed Life* than meets the eye. At first glance it seems like a somewhat interesting, perhaps diverting way to spend some

time, but by the second and even third time you listen to it, you will begin to hear the philosophies of a very literate and surprisingly sensitive individual.

If you are looking for something a little different and a little strange, check out *The Boxed Life*.

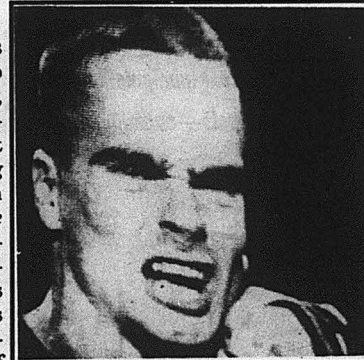


Photo courtesy of Imago Recording Co.

The Captain's Log Wants You!

Now Accepting:

News
Letters

Cartoons
Sports

Arts
Reviews

Rain hinders dorm construction slightly

By Mary Elizabeth Tinsley
Staff Writer

Heavy rains on the Christopher Newport University dormitory construction site have been a slight obstacle for the contractors, W.M. Jordan Company of Newport News. However, construction has continued throughout the inclement weather and the threat of erosion has been curbed.

According to John Darden, field engineer for W.M. Jordan, there has been no erosion and only a few construction days have been lost to rainy weather.

The dirt on the site has a natural sandy layer which aerates it, causing the dirt to dry faster than a typical clay based dirt.

The contractors have taken precautions to prevent erosion. A slit fence has been erected around the perimeter of the site to trap mud and prevent it from entering storm drains and neighboring stream systems.

In addition, bales of hay surround the site to filter sediment out of the water that runs off the site.

"Denuding of land for construction uses strips away the valuable vegetative

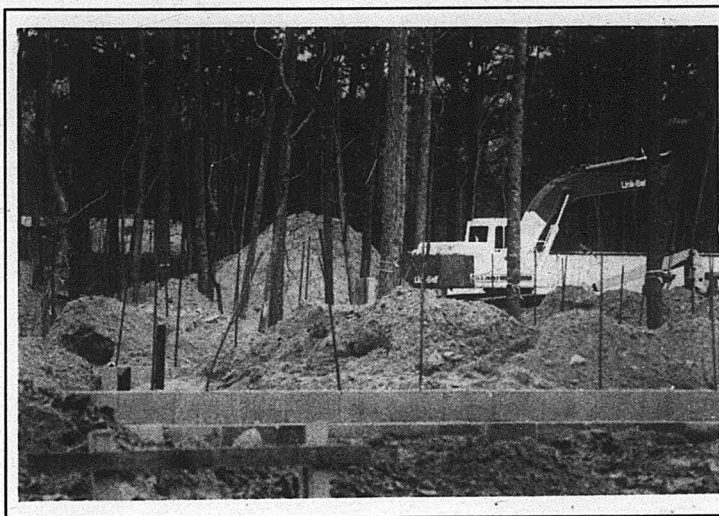


Photo by Keith Hassan

Heavy rains have slowed work on the dorm slated to open in the Fall of 1994.

cover, leaving loose soil exposed to effects of weather. Heavy rains accelerate erosion rates. If left unchecked, the sediment would fill in the stream channels faster than the water flow could discharge it. This causes the stream channels to be filled in and the lake that receives the

drainage to shallow," said Robert Tinsley, a student of Geology at the College of William and Mary.

According to William L. Brauer, vice president for Administration and Finance, the site had to be in compliance with environmental codes that the State Department of

Conservation and Recreation and the Chesapeake Bay Preservation Act required before any construction could begin. These codes are safeguards which ensure against erosion and lake shallowing, and protect the watershed and the construction site.

The watershed is the entire area of land that contributes runoff into a given body of water, which is Lake Maury, by The Mariners Museum.

The loss of trees on the construction site has also produced concerns about erosion, but the school plans to replace all lost shrubs and trees after construction is completed. "The interior court trees have been preserved. We have tried to preserve as many trees as we could, especially the big ones," said Brauer.

The CNU Buildings and Grounds Committee has allocated \$50,000 to landscaping. This landscape account will be used to replace the trees, grass and shrubs lost to construction on the dorm site.

According to Brauer, after the dorm landscaping is finished, CNU hopes to devote \$50,000 per year to campus landscaping, unless there are revenue shortfalls.

Recruiters visit campus to hire seniors

Prospective employees need to complete a placement file

By Joyce Kuster
Staff Writer

Representatives from more than 60 companies will be on campus this spring seeking to hire graduating seniors.

The on-campus recruiting schedule, which is updated every Monday, is posted across the hall from the office of Career and Counseling Services, room 146 in the Campus Center.

Becky Tupper, coordinator for the Corporate Recruitment Program, explained that to take advantage of this program students should complete a placement file. The file contains 15 copies of the students resume and an information sheet.

Once a placement folder has been established, students should monitor the recruiting schedule for companies

in their career field.

A personal, on campus interview is then arranged with a company representative.

Resumes are also circulated to companies who are not able to conduct interviews on campus.

Tupper explained that the on and off campus recruiting programs are primarily for graduating seniors and CNU alumni.

However, flyers advertising part time and seasonal work are also published throughout the semester.

Robert Jones, a Quality Assurance Specialist for Monogram Retailer Credit Services, Inc., and full time CNU student, represented Monogram when they recruited at CNU throughout the fall. He said, "those [students] interested in working part time in a business environment, get

experience and fill the company's needs...it is an excellent opportunity to get in the door."

Currently, most companies that recruit through CNU are based locally. Tupper believes however, that when the dorms are completed, the number of national companies recruiting at CNU will increase.

She explained that schools with dorms tend to have a more diversified and mobile student population.

The office of Career and Counseling Services also offers Career Information Days throughout the spring. This offers students an opportunity to interact with local companies and organizations.

Though some of the companies at the Career Information Days are not currently hiring, it is an ideal opportunity for students to make

contacts and to find out more about their career field.

Tupper believes underclassmen that, "there's a lot going on your senior year." She encourages students to prepare their resumes and attend the Career Information Days early. It offers a good opportunity to investigate the career field early and "you get to know the companies you want to target."

The Office of Career and Counseling Services has many resources, but Tupper advises, "don't let us be your only source." She also encourages students and alumni to take advantage of all of the services and resources that they offer. *The Link*, a newsletter published by the Office of Career and Counseling Services, lists schedules, dates and times of the various seminars.

BUY A TAPE-A-QUARTER CLASSIFIED

CNU to host Twelfth Annual Community Forum on Aging

The 12th Annual Community Forum on Aging, which will be held at Christopher Newport University Tuesday, March 9, will focus on partnerships that can last a lifetime.

The 15 workshops available to participants will range from the therapeutic use of pets to partnerships for a functional family to dining out for health and pleasure.

"This year's Forum on Aging covers a broad range of issues," said Cheryl Mathews, a professor of social work at CNU and co-chairman of the forum. "Anyone who is interested in, or concerned about the welfare of, this large segment of our population will find the event a worthwhile experience."

According to co-chairman William Massey of the Peninsula Agency on Aging, the 12th Annual Community Forum on Aging has something for everyone.

"From the early-bird discussion on how to protect yourself from consumer fraud and deceptive advertising

through the keynote address, *Building Lifelong Partnerships: Eldercare in America*, to the educational partnerships that are available locally, you will receive a wealth of useful information at the forum," Massey said.

The registration fee, which is waived for those over 60, is \$5 per person. A low salt, low fat, low sugar lunch is available for \$6 per person. For those interested in obtaining a continuing education unit certificate, there will be an additional \$5 fee.

Checks, made payable to the Peninsula Agency on Aging, should be mailed to PAA, Inc., 739 Thimble Shoals Blvd., Suite 1006, Newport News, Va. 23606. Deadline for registration is March 3.

Sponsors of the 12th Annual Community Forum on Aging are: Williamsburg Community Hospital, Sentara Life Care Corporation, Riverside Regional Medical Center and Mary Immaculate Healthcare Corporation.

Professor of the Week

By S.A. Crosby
Staff Writer

Since coming to CNU in the fall of 1992, Dr. Debra Ballinger has dedicated her time to improving the reputation of the physical education curriculum.

Dr. Ballinger said that many people underestimate the dedication and training it takes to become a physical education professional. She received a Bachelor's degree from Elmhurst College and a Masters degree in physical education from the University of South Florida. She received her doctorate from Arizona State University.

Dr. Ballinger teaches classes in fitness management and physical preparation. She is also the instructor for a course in organization, administration and physical education.

Dr. Ballinger said physical education gets slighted as a part of a student's overall educational development. She points out, "the fact that here at CNU a student only has to complete one semester of a physical education class in order to graduate."

Dr. Ballinger said that physical education can help students reduce their stress levels. "Playing a couple of quarters of basketball can work off a great deal," she said. Dr. Ballinger also said that students who excel at physical activities get labeled as "dumbjocks" while in fact they learn a great deal through the lessons that organized sports activities can teach.

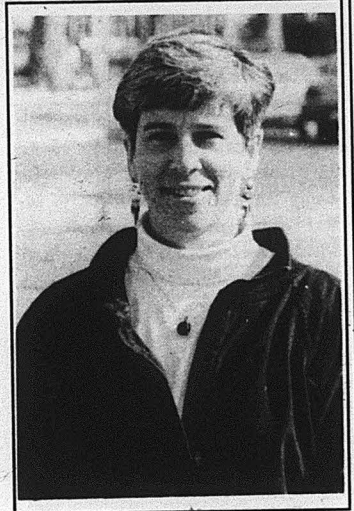


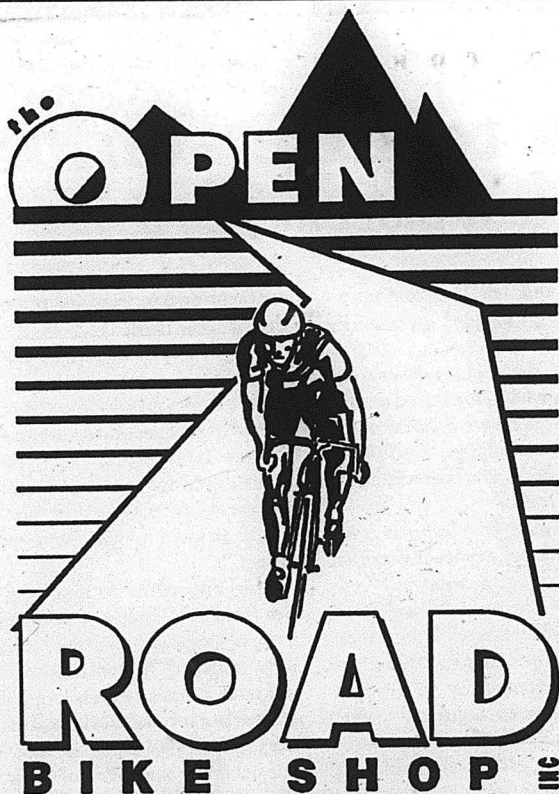
Photo by Robby Hips

Dr. Ballinger chairs a task force on human diversity and applied sports psychology exploring this concept.

In addition to her duties here at CNU, Dr. Ballinger also plays competitive golf. She is married and has three children.

She has lived both in Saudi Arabia and Holland and feels this had given her a greater understanding of people.

Dr. Ballinger said that because of CNU's size, it is sometimes difficult for students to make their ideas reality. However, she said, there are advantages to CNU's small size, such as reasonably sized classes. Dr. Ballinger said she hopes one day people will appreciate the value of physical education.



12715-U Warwick Blvd.
Newport News, VA 23606
on the corner of Warwick and Maxwell OPEN WEEKENDS
804-930-0510

- ☐ Want to sell that thing in your garage?
- ☐ Have an announcement you would like to make?
- ☐ Want to talk to your friends?

BUY A TAPE-A-QUATER

Briefs

From the desk of SGA

The student Government Association wishes to congratulate the new Homecoming King and Queen. The Student Government Association also wishes to extend a thank you to all of the homecoming candidates for participating in homecoming.

Last week, in an effort to increase the membership of SGA, students were given an opportunity to become a voting senator with full privileges. These privileges include a chance to become president, either of the vice presidents, secretary, or the student auditor of the SGA. This is an excellent opportunity because most students have to be a senator for at least one year prior to holding an elected position in the SGA. If you are interested, please pick up an application in Campus Center

room 230. The deadline for these applications is Monday February 22, at 2:00 p.m.

Prayer service

There will be a short, ecumenical prayer service in observance of Ash Wednesday on February 24 at noon in room 150 of the Campus Center.

Ash Wednesday marks the beginning of Lent, a forty-day period which serves as a prelude to Easter, the most important Christian feast. Lent has traditionally been a time for Christians to examine their relationships with God and other people and is marked by emphasis on prayer, self-denial, and outreach to those in need. United Campus Ministries will sponsor the Ash Wednesday Service and invite all members of the CNU community to participate.

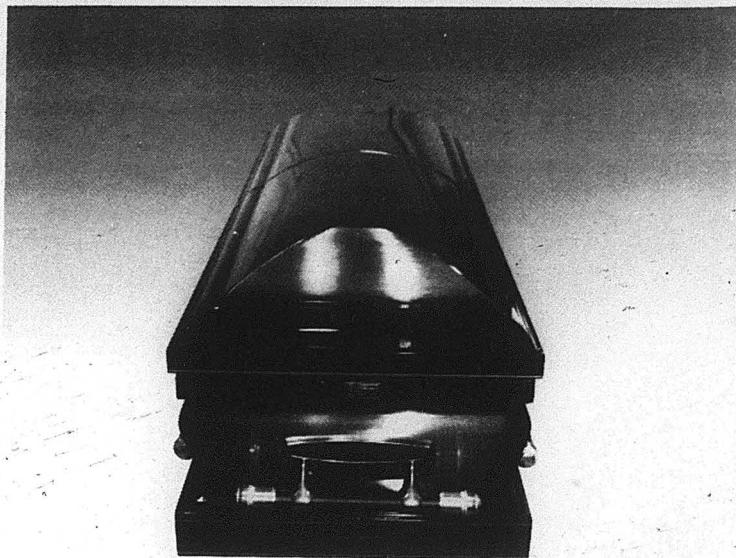
Math lecture

A mathematician at the College of William and Mary will attempt to answer the age-old question of why anyone would want to be a mathematician.

The illustrated lecture will begin at 4 p.m. February 19 in Gosnold Hall, Room 101. Part of the College of Science and Technology Lecture Series.

"Mathematics is, perhaps, the profession least well understood by the public," said Dr. Charles R. Johnson. "Yet it offers remarkable power in understanding mysteries."

For more information please call 594-7082.

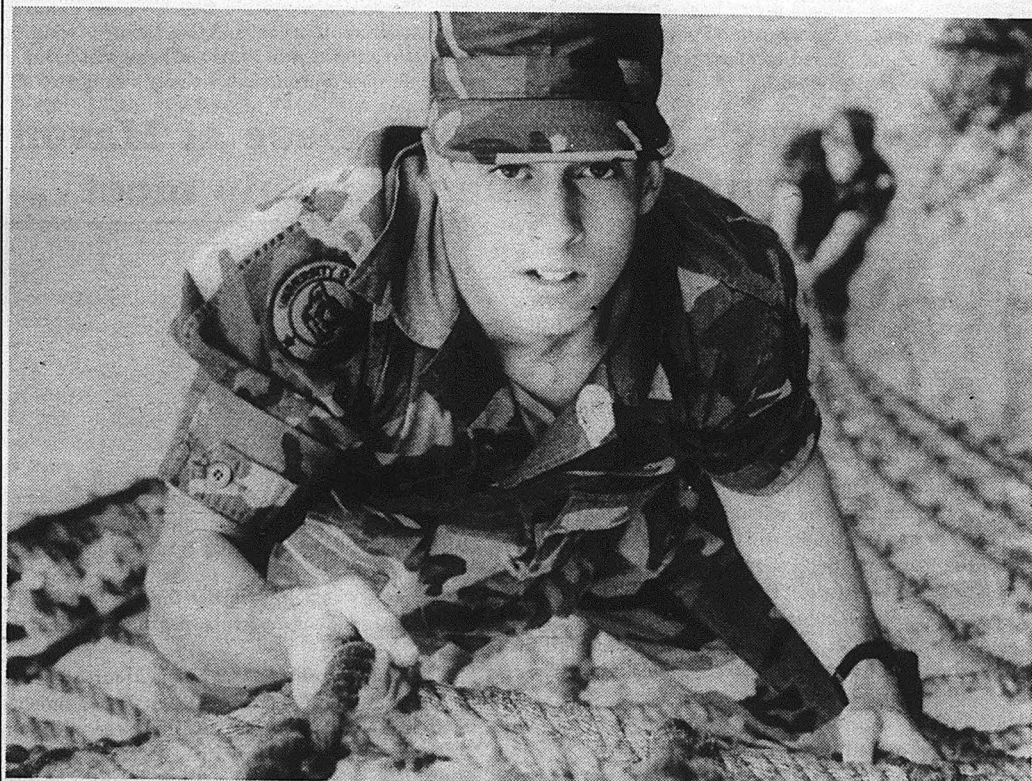


ABSOLUTE SILENCE.

THE BIRTHDAYS, THE GRADUATION, THE WEDDING DAY... WE WERE THERE TO TOAST THEM ALL. SO FROM ONE GREAT SPIRIT TO ANOTHER, HERE'S TO THE MOST ENDURING RITUAL OF ALL.

10% OF NORTH AMERICANS ARE ALCOHOLICS • NEARLY 50% OF AUTOMOBILE FATALITIES ARE LINKED TO ALCOHOL
A TEENAGER SEES 100,000 ALCOHOL ADS BEFORE REACHING LEGAL DRINKING AGE
ADBUSTERS (604) 736-9401

RESERVE OFFICERS' TRAINING CORPS



If you didn't sign up for ROTC as a freshman or sophomore, you can still catch up to your classmates by attending Army ROTC Camp Challenge, a paid six-week summer course in leadership training. By the time you have graduated from college, you'll have the credentials of an Army officer. You'll also have the self-confidence and discipline it takes to succeed in college and beyond.



ARMY ROTC

**THE SMARTEST COLLEGE
COURSE YOU CAN TAKE.**

CPT William S. Jackson

Christopher Newport University
(804) 594-7169

SUMMER SCHOOL FOR PEOPLE ON THEIR WAY TO THE TOP.

Softball looks for fifth Dixie victory

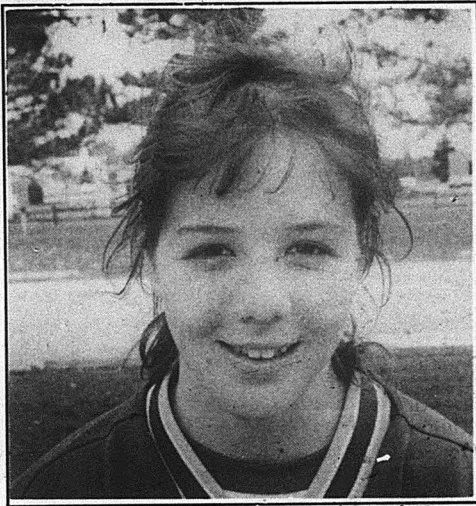


Photo by Keith Hassan

Senior catcher Kim Wells will be a key player for the Lady Captains this year.

By Margaret Bennett
Contributing Writer

With schedule changes expected later in the season, the Christopher Newport University softball team is striving to win their fourth regular season Dixie Conference in a row.

"That's a goal that is not easy to achieve," said veteran Coach Bobby Wills, "but we should do well."

The Lady Captains have the benefit of experience in many of their returning players. They include senior catcher Kim Wells and senior Kim Cason, who plays third base. Also included in this list is junior Jennifer Fields, who plays first base. All of these ladies were named to All-Dixie Conference teams last year.

Wills also expects great things from several newcomers. Freshman Rebecca Ramirez was named as an All-Metropolitan player in the Washington D.C. area prior to attending CNU. Another newcomer is freshman pitcher Neki Hunter, who is from Monacan High School in Richmond.

Wills expects some of the team's toughest competition to be found outside of the Dixie Conference. He expects it to be in nationally ranked teams such as Mary Washington College and Rowan College, in New Jersey. Closer to home, Hampton University is also anticipated to be a challenge.

The Lady Captains will face some of these highly regarded teams in the Virginia Wesleyan College Tournament, which will be held the first weekend in March.

"Ten teams will be participating," explained Wills, "and none of them are weak."

Within the Dixie Conference, Wills anticipates Ferrum College and Methodist College to be tough. Methodist presents a particular challenge for the ladies, having lost to Methodist three years straight in the finals of the Dixie Conference Tournament.

The Lady Captains open their season on Friday, Feb. 26, against Maryland-Eastern Shore. The game will be held at Hunington Park in Newport News.

Lady Captains have 'what it takes

By Nancy Merriman
Sports Editor

The Christopher Newport University women's basketball team earned two Dixie Conference wins on Friday, Feb. 12, and Saturday, Feb. 13. Coach Cathy Parson was "extremely pleased and impressed" with her team's performance.

The first night, the Lady Captains defeated Averett College 84-55, never trailing. At half time, the women held a 42-29 lead. Sophomore Alice Streetman led the Lady Captains with 22 points. Senior Tia Johnson scored 14 points and grabbed 12 rebounds. Senior Liisa Barnes had 13 points and freshman Cynthia Allen had 12. Junior Karen Barefoot had 11 points and 11 rebounds for the night.

The next day, the Lady Captains defeated Ferrum College 81-72. The ladies again never trailed their opponent. Ferrum came up with a 14 point rally in the second half, but it was not enough to take the game away from the Lady Captains. Barefoot led the ladies with 23 points. Junior Kinsey Pritchett scored 18 points and Johnson had 10. Streetman came away with 14 points and 11 rebounds.

For this weekend of play, Streetman was named the Dixie Conference Player of the Week.

After this weekend of play, Johnson only needs 13 rebounds in order to be the first ever Lady Captain to break the 1,000 point and rebound barriers. Barnes needs only eight more points to become the twelfth Lady Captain to score 1,000 career points. Barefoot also has the opportunity to make more history. With only seven more assists, she will hold the NCAA Division III career assists record.

"The team played better basketball than I have seen them play," commented Parson, "The reserves came in and played comfortably and confidently. Everyone contributed."

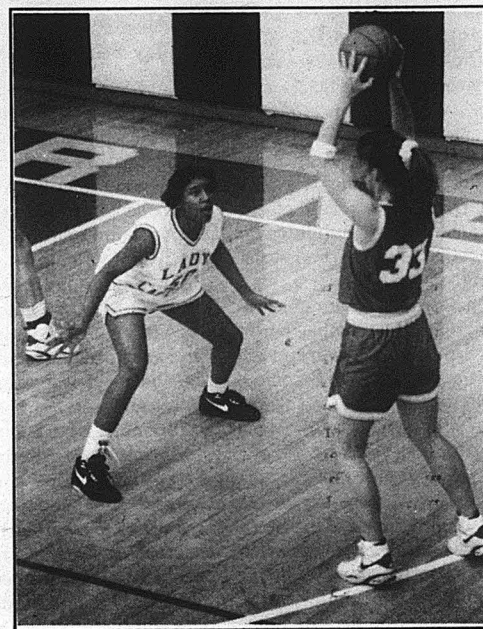


Photo by Keith Hassan

Freshman Cynthia Allen defends an opponent. She scored 12 points in the Lady Captain's victory over conference foe Averett College.

From the weekend, Parson learned what players complimented each other on the floor and will use this knowledge in future games.

"Now we are looking to an NCAA berth," said Parson, "There is a mountain that we must climb in order to obtain this goal and that includes winning our last regular season game and being victorious in the conference tournament. We've got what it takes."

Men's track takes second place at Mason-Dixon conference championship meet

By Nancy Merriman
Sports Editor

A strong distance squad led the Christopher Newport University men's track team to a second place finish at the Mason-Dixon Indoor Conference meet on Sunday, Feb. 14.

Freshman Mike Boucher won the high jump and 55 meter hurdles. His time of 7.72 in the 55m hurdles was good enough for a new CNU record and a national qualification.

For the distance squad, sophomore Mark Earnest won the 1500m run in 4:04 and placed third in the 800m race. Sophomore Rich Schugeld finished close behind Earnest in the 1500m in a time of 4:10, good enough for third.

In the 5000m, sophomore Lemuel Pearsall finished fourth in a time of 16:46, while junior Robert Allen finished sixth.

The team of Earnest, Schugeld, Pearsall and Allen finished third in the 3200m relay.

Another multi-event scorer was sophomore David Bullock, who placed second in the triple jump, fifth in the long jump and sixth in the 55m dash.

Also placing in the jumps was freshman Nelson

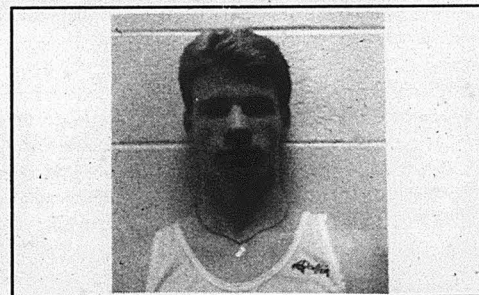


Photo by Wayne Block

Pictured: freshman Mike Boucher.

Roberson, who placed third in the long jump and in the triple jump. Roberson also finished fourth in the 400m.

Freshman Tireke Adams finished fourth for CNU in the 55m and sophomore Khary Jones finished sixth in the 400m. Matt Eckstein took second in the shot put for the Captains with a 42'8 3/4" effort.

The Captains finished with 99 points. In first place, with 119 points, was Frostburg State University. Mary Washington College was only ten points behind with 89.

Tennis hopes to bring trophy back to CNU

By Margaret Bennett
Contributing Writer

Having won the Dixie Conference two years ago, the Christopher Newport University men's tennis team is hoping to bring the trophy back home this season.

Senior **Holden Knight** will be a key player for the Captains. Knight, who has been with the team since 1990, is ranked as the number four player in the country. Other returning players include senior **Robert Down** and senior **Tim Yoder**.

Coach Craig Reynolds, who is entering his fifth season with the team, says all the newcomers look very good. They include freshmen **Jack Schwolow** and **Thomas Onoff**, and sophomores **Ben Fitzer** and **George Jango**.

Last year's record was "not great," as Reynolds said. "We were not a strong team last year," Reynolds added, "Many of our players did not have a lot of experience playing tennis at the college level."

Reynolds also explained that they did not have high expectations for last year's team, so there were few frustrating losses.

Within the Dixie Conference, Reynolds expects Methodist College and Averett College to be tough matches. Outside the conference, Mary Washington College, Hampden Sydney College and Lynchburg College are expected to be challenges for the team.

The Captains open their season at Washington & Lee on Friday, Feb. 26. The first home match for the men is scheduled for Tuesday, March 2, against Randolph Macon College.

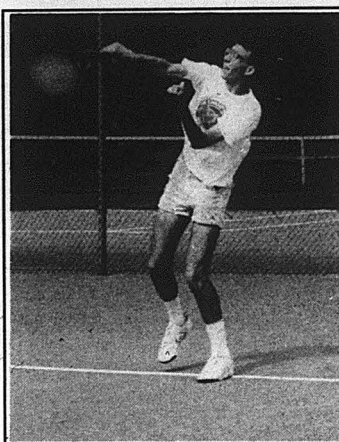


Photo by Keith Hassan
CNU tennis player, senior **Holden Knight** is currently ranked fourth in Division III.

Men's basketball goes on last Dixie conference road trip of 1992-93 season

By Nancy Merriman
Sports Editor

The Christopher Newport University men's basketball team split their last weekend of regular season play on the road with one win and one loss.

On Friday, Feb. 12, the Captains defeated Averett College 89-53. CNU had a 33-28 half time lead, which they extended by scoring the first 23 points of the second half. After that, the men easily coasted to victory.

Senior **James Boykins** led CNU with 26 points and 15 rebounds. Senior **Steve Artis** scored 20 points, while freshman **Jerome Lee** had 12. All of Lee's points came from three point shots.

The next evening the Captains lost a devastating game to Ferrum College. Ferrum took a big lead in the first half 30-14. The Captains were able to cut this lead to 40-31 by half time. With 3:55 left in the game, junior **Brian Poarch** cut the lead to 64-61. CNU did not score again until only 52 seconds

remained. This score was a three pointer by Poarch. In the meantime, though, Ferrum scored 10 unanswered points to win the game 80-68.

Boykins once again paced the Captains with 16 points and 14 rebounds. Artis backed him up with 13 points and freshman **Terry Thomas** scored 10. Freshman **Tracy Stith** scored 10 points and grabbed 5 rebounds, all in 10 minutes of play. "James played well," commented **Coach C.J. Woollum**, "despite fouling out of the game."

"Friday night we did what we had to do," said Woollum, "but on Saturday, we never matched Ferrum's intensity level. The game against Ferrum was just our poorest game of the season and it couldn't have come at a worse time."

Despite coming in during the middle of the season, Lee and Stith both had an excellent weekend. "Since they came in during the middle of the season, it has taken some time for them to learn our system," explained Woollum, "but they seem to have become adjusted and will see more playing time."

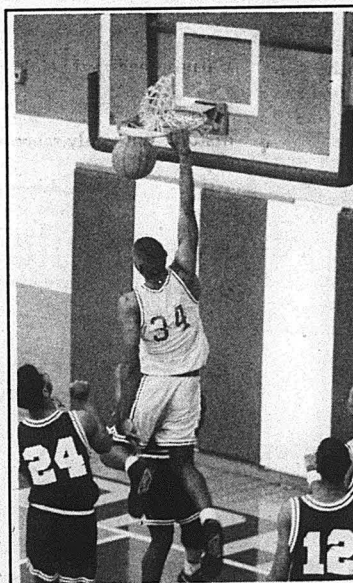


Photo by Keith Hassan
James Boykins slammed in a basket. He had 26 points against Averett.

Women place second in Mason-Dixon

By Nancy Merriman
Sports Editor

Despite their small size, the Christopher Newport University women's track team finished second in the Mason-Dixon indoor Conference meet on Sunday, Feb. 14.

Sophomore **Vandisha Wilder** finished first in the long jump (5.24 meters) and 200m dash (26.3), and was a member of the winning 1600m relay team. She also finished second in the 55m dash (7.31) and third in the high jump (4'10").

Also placing well was freshman **Nicole Horn**. She finished third in the 1500m and in the 800m. Sophomore **Sonia Archer** took sixth in the shot put, third in the 55m and second in the 200m.

Sophomore **Dominique McGlaughlin** finished fourth in the long jump, fifth in the 55m dash and sixth in the 200m.

Finishing first and second in the 400m were freshman **Teresa Hudson** and sophomore **Cusetta Corridon**, respectively. Both women were also members of the 1600m relay team. Also finishing well was sophomore **Carolyn Robinson**, who was second in the triple jump. Sophomore **Rose Charis**, who ran a leg on the 1600m relay team, finished fifth in the 55m hurdle race and junior **Tracey Marshall** finished sixth in the 5000m race.

The team of Marshall, Horn, Robinson and senior **Susan Bender** finished third in the 3200m relay.

The Lady Captains finished the meet with 113 points. They were defeated by Mary Washington College with 139 points. The closest team behind CNU was Frostburg State University, with 59 points.

CHRISTOPHER NEWPORT UNIVERSITY

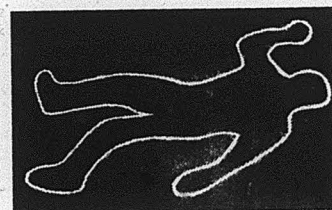
will host the *Dixie Conference Tournament*
on Feb. 26 and 27.

The first day of play will begin at 2:00 p.m. and the
second day will begin at 6:00 p.m.

The Athletic Department will admit the *first 100* CNU students with an I.D. free.

Fees for the tournament are: **\$3.00** for adults
\$2.00 for students with I.D.

WHEN YOU RIDE DRUNK, ONE MORE
FOR THE ROAD CAN HAVE
AN ENTIRELY DIFFERENT MEANING.



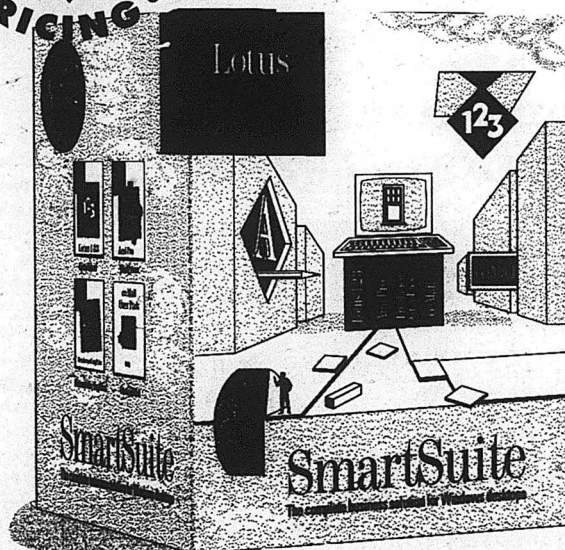
Alcohol quickly affects your judgment, balance, and coordination. When these faculties are impaired, riding becomes more than difficult. It becomes dangerous. Don't drink and ride. Or your last drink might be your last drink. **MOTORCYCLE SAFETY FOUNDATION**



A Suite deal for you.

**SPECIAL EDUCATIONAL
PRICING.**

FREE
SmartSuite
T-Shirt*



UP TO
80%
OFF
commercial
price

Imagine the fastest, easiest way to get the most out of Windows™ at a special educational price! That's the idea behind SmartSuite from Lotus. SmartSuite is really a package of four different, full-featured and award-winning Lotus applications that will meet all your business software needs.

All this in a single purchase? Yes, and all these products fully integrated to work seamlessly on your desktop. Now you can move text, data, graphs or images between applications quickly and easily. All four

products share common menus and tools, called SmartIcons, to make your learning time short and allow you to start work quickly. Make the most of your Windows desktop investment. Put SmartSuite to work for you now and receive a free T-Shirt!

SmartSuite includes:

- **AmiPro 3.0** word processing
- **1-2-3** Windows spreadsheets
- **Freelance Graphics** presentations
- **cc:Mail** electronic communications
- **The organizer** included

Over \$350 worth of educationally priced software for only

MSERP

\$189.00

See the Bookstore to Special Order your copy today!
(Available to Students, Faculty, and Staff only)

*Limited quantities available.

Wild Kingdom

By Anthony Rubino, Jr.

Stuff We Think When The Alarm Goes Off



What to tell your professor when you blow off class

1. "A distant relative died, and I had to go to the funeral." —GOOD (But, be sure you make up the relative, because if you use a real person and that person dies than you'll feel really bad.)
2. "I was very very ill." —GOOD
3. "While off campus visiting my sick grandmother, I got a flat tire." —GOOD

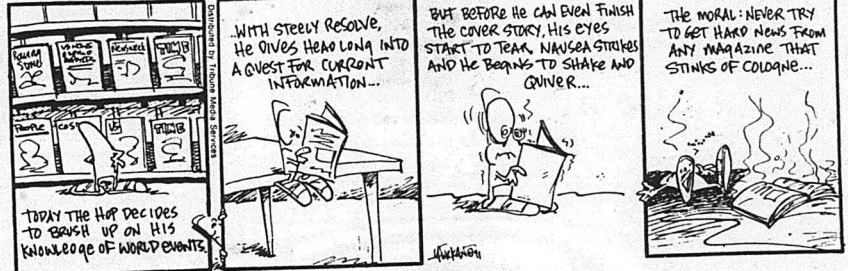
What NOT to tell your professor when you blow off class

1. "I died." —BAD (Not only will this create immediate suspicion, but it is very difficult to prove.)
2. "I was very very ill because I washed down a bottle of tequila with a bottle of vodka, and spent most of the night projectile vomiting." —BAD (too much detail.)
3. "Your lectures are so boring they make me want to run from your classroom, screaming, and slit my wrists." —BAD (Honest, but bad.)

TOM the DANCING BUG PRESENTS



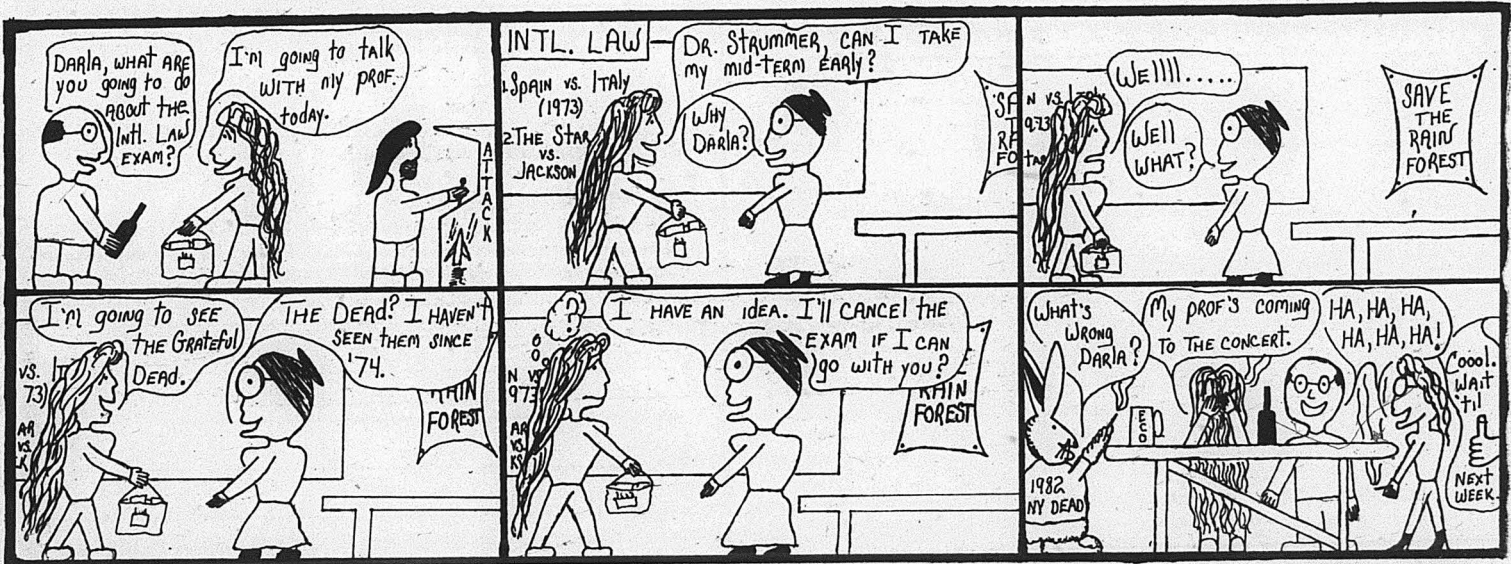
Wolfbane



Spencer Green



BETWEEN CLASSES!



Jack L. X. L. K.

Classifieds

Miss
Classified
594-7196

CLASSIFIED COPY DEADLINE

(for businesses and non-college-associated persons only)

- CALL "MISS CLASSIFIED," to place your ad.
- Or come by The Captain's Log office in Room 223 of the Campus Center at Christopher Newport University, 50 Shoe Lane, Newport News.
- To NOON Thursday for following week's publication.
- Please contact Miss Classified for rates and other Classified information.
- Payment must be received before classified will be published.
- Office is closed on weekends. Leave a message for Miss Classified. A representative will contact you.
- Space is allotted on a first come, first serve basis. Ad position cannot be guaranteed by The Captain's Log.

CUSTOMER SERVICE

Please call 594-7196 on all CHANGE OF COPY OR CORRECTIONS. Deadline NOON on Tuesday preceding the week of publication.

Certain Seller Ads —For individuals only, no businesses, please. Ads listing more than one item: each item must be priced and for sale only, no rentals. Ads cannot be cancelled or changed before the first insertion. Call Miss Classified for further information and rates.

*The Captain's Log reserves the right to discontinue or amend any of our programs or offerings at any time.

MISS CLASSIFIED 594-7196
50 Shoe Lane, Newport News 23606

NOTICE—THE CAPTAIN'S LOG

For the protection of our readers, all advertisements are accepted for publication in the Classified Section on the premise that the product is properly described in the advertisement, is available at the advertised price, is available at the advertised address and will be willingly sold to a buyer at the price and conditions stated in the advertisement.

Advertisers deliberately violating these standards will not be permitted to use our advertising columns.

If the reader encounters anything other than faithful compliance with these conditions, we will appreciate your call to the Better Business Bureau, (804) 722-9101, or write BBB, 3608 Tidewater Drive, Norfolk, Virginia 23509.

NOTICE of typographical or other errors must be given before the second insertion for claims or refund

or extension cannot be recognized.

After an ad is ordered it cannot be cancelled or changed before publication. Read ad carefully at the time of first insertion. If it contains an error and you wish to correct or cancel your ad, call MISS CLASSIFIED (594-7196) and ask for CLASSIFIED CUSTOMER SERVICE DEPARTMENT.

The Captain's Log does not assume financial responsibility for losses sustained as a result of any typographical error in any ad imperfectly or incorrectly printed or accidentally omitted.

All advertising copy is accepted subject to the approval or rejection by the management of The Captain's Log, and if rejected, any consideration paid will be refunded to the advertiser, and all parties will be released. The Captain's Log also reserves the right to edit, reject or classify all ads under appropriate headings.

Students, faculty, staff and members of the alumni society of Christopher Newport University. Order a classified for only .25¢ per six lines. Limit three per person.

TAPE-A-QUARTER CLASSIFIEDS:

Announcements

Landscape Design Services and Plant Material offered at 10% discount to faculty, staff, students, and alumni. Loughridge Design and Landscape. Timothy C. Hahn prop. 565-2039. Call for consultation. 1st consultation no charge.

Spring Break: Cancun, Nassau from \$299 Organize a small group for FREE trip Call 1 (800) Get-Sun-1

CELLULAR PHONES We sell new and used phone. We take trade-in's or buy used equipment. Any questions, please call Tu Ritter Channel One 870-8555.

Minister and wife wish to adopt Caucasian, Oriental, or Hispanic infant. Let us help give your baby all the love and attention. Call collect (804) 357-5053

For Sale

CHEAP! FBI/US. SEIZED 89 MERCEDES \$200, 86 VW \$50, 87 MERCEDES \$100, 65 MUSTANG \$50. Choose from thousands starting \$50. FREE Information-24 Hour Hotline. 801-379-2929 Copyright #VA025010.

For Sale

Pro Series Pyramid Speaker Box (2) Twelves, (2) Mids, and (2) Tweeters, gray carpeted, great condition, excellent sound. First \$190 takes it. Call Craig 898-1983.

'67 Mustang, 289 V-8, 3 speed, leather inter., 85% original 411 rear-end, new tires, runs great, body in good shape. Asking \$2800 nego. Call after 7pm, leave message if not home. Must sell!

Jobs Available

EARN UP TO \$10/HR Are you looking for great hours? Great \$\$\$? And a great experience? Don't look any further. A Market for Fortune 500 Companies! CALL NOW 1-800-950-1037, Ext. 17

***EXTRA INCOME "93"** Earn \$200-\$500 weekly mailing 1993 UWTI travel brochures. For more information send self addressed stamped envelope to: Travel INC., P.O. Box 2530, Miami, FL 33161

\$200-\$500 WEEKLY Assemble products at home. Easy! No

Jobs Available

selling. You're paid direct-Fully Guaranteed. FREE Information-24 Hour Hotline. 801-379-2900 Copyright #VA025050

Person to Person

Oldsmobile-Thanks for hanging in there with me! I don't know how I would have made it without you! Here's to having a great season. B/F/A Love ya, Toaster

Thanks for being there for me in my time of need. I love being in all of your classes. Jason Harris, you are the best friend I ever had. Your friend forever, "Murray"

THANK YOU for a wonderful Valentine's Day. Hope we have many more together-Love Always, D.P.O.M

Kristy-"My Big Sis"-Thanks for being a wonderful friend. I really wish we could have met sooner and thanks a million for listening to me go off on a tangent. Love your friend and ski buddy-Julie

To Still Waiting: You sure have stirred up a few people let alone you sure have a lot of nerve!! Why don't you mind YOUR own business. I'm sure you wouldn't like it if someone was interested in YOUR boyfriend! Stirred up

Person to Person

B. Ball Man, I thought you were different. Dogs come in all breeds, shapes, and sizes but the worst kind are the ones who hide their dog tag. You proved my boys to men ratio to be true.Remember...Women stick together. Large Fry (Warm Honey)

Amy A. (ΓΦΒ) Thanks for being a great friend and a wonderful Big Sis. Congrats on your new office as President, you deserve it and you're doing a great job. Love in PKE-Lis (ΓΦΒ)

Wanted: 2 Black men, 20-24, for 2 very nice females (19). Quiet, but like to have fun. Reply by an ad in the Captain's Log. Maybe set a date (weekend) and place to meet. T.C.

To: Not Bow Woman, Since P. is such a sweetheart, too bad he didn't spend Valentine's EVENING with you! Bow Woman

Toaster, Happy Birthday! Glad we're best friends. Have you had any good salad bars lately? "Croak" Frogman said Hi. By the way-it's four red lights now, but that's O.K. Keep Happy-Wakka x3

Slippery Slider: To my surprise, your package arrived without demise. And yes, I agree, Corinthian. I've been roaming the mountain and feeding on the groves. Congratulations on defeating the society of the purple shadows. Darkhorse

Person to Person

Sweetie Credit, I love you more than anything in the whole world. I'll always love you. Sweetie Debit

To PKΦ: Keep up the good work, our goal is almost reached. Pledges, you're doing a great job and it will all pay off sooner than you think (April)! Rob M.

Mr. Iceman, Happy Anniversary-sweetheart! Thanks for making the last six months of my life so special-you mean everything to me. Love, Katie

DARKHORSE: Who are you that gets addressed with such reverent discourse, by such appellations as Oilwell and Greasefire, Jr. and what is this society of distinguished intellect, the Raven Society, that has chicks flocking. I seek admission! In The Dark

To: B. Ball Man, it only takes one conversation to see that you are a strong black man with even stronger morals and values. I'M IMPRESSED! Boys are abundant but strong Afrikan American men are almost extinct. Don't Change.

Warm Honey
David Sweetheart, I still love you very much! There is nothing wrong with second. Love You, Your Baby Diane, Who are ya'll? Why are you here? Is that cute guy really married? Lori (30 minute buzz!!)

TAPE-A-QUARTER CLASSIFIEDS

Tape-A-Quarter Classifieds are for students, faculty, staff and members of the alumni society only. Simply write your ad and tape a quarter to it.

- Rates are .25¢ per ad for six(6) lines. Ads exceeding six lines will not be run.
- All ads are run in one issue only. For multiple runs call MISS CLASSIFIED (594-7196) for further information.
- Tape-A-Quarter Classifieds must be submitted on an official Tape-A-Quarter coupon. Coupons can be obtained in each issue of The Captain's Log Ads submitted on anything other than official coupon WILL NOT be published.
- Included on the coupon must be your name, phone number and the date that ad was submitted. Failure to include such information will result in ad not being run.
- Tape-A-Quarters must be left in our convenient drop-box located on the first floor of the Campus Center next to the stairwell by the Jown W. Gaines Theatre or by mailing to: The Captain's Log, Tape-A-Quarter Classified Department, 50 Shoe Lane, Newport News, Virginia 23606. DO NOT bring Tape-A-Quarter ads to our office.
- Tape-A-Quarter ads are published on a space available basis. Those ads which are not published because of space constraints will be published in the next issue.
- The Captain's Log is not responsible for lost, misdirected or late Tape-A-Quarter ads.

DEADLINE for all Tape-A-Quarter Classifieds is NOON on Wednesday the week preceding publication. Publication dates are available upon request.

For more information about our classifieds, see the top of the Classified Section or call Miss Classified.

OFFICIAL TAPE-A-QUARTER SUBMISSION FORM

Ads which are not submitted on this form will not be published

NAME (required)

PHONE NUMBER (required)

TODAY'S DATE: ___/___/___

Check one: ☐ Student ☐ Faculty ☐ Staff ☐ Member of Alumni Society

Print Message below. Please DO NOT exceed six lines.

Quarter
here

Tape-A-Quarter ads are printed on a space available basis. Those ads which do not appear because of space constraints will be published in the following issue.